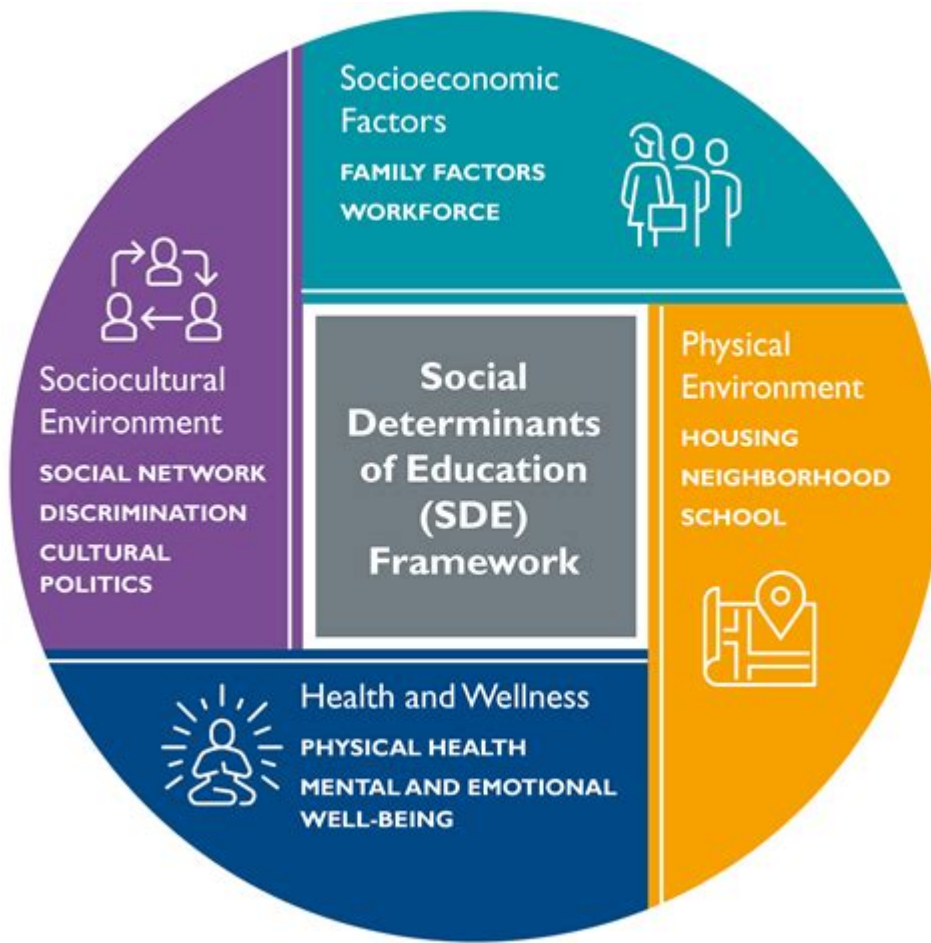


Social Determinants Of Education



Social determinants of education play a crucial role in shaping the educational outcomes of individuals and communities. These determinants encompass a wide range of factors, including socioeconomic status, health, environment, and access to resources, all of which can significantly influence a person's ability to succeed in an educational setting. Understanding these determinants is essential for policymakers, educators, and communities aiming to create equitable educational opportunities for all students. This article delves into the various social determinants of education, their impact on learning, and potential strategies to mitigate their effects.

Understanding Social Determinants of Education

The social determinants of education refer to the social and economic conditions that affect a person's educational experiences and outcomes. These determinants can be categorized into several key areas:

1. Socioeconomic Status (SES)

Socioeconomic status is perhaps the most significant social determinant of education. SES typically encompasses income, education level, and occupation, all of which can influence educational access and quality.

- Income: Families with higher incomes can afford better educational resources, including private tutoring, extracurricular activities, and access to advanced technology.
- Education Level: Parents with higher education levels are more likely to value education and encourage their children to pursue academic success. This can lead to a cycle where children of educated parents achieve higher educational outcomes.
- Occupation: The type of employment a parent holds can affect their availability to support their child's education, both in terms of time and resources.

2. Geographic Location

Geographic location can also significantly influence educational opportunities and resources.

- Urban vs. Rural: Urban areas often have more educational resources, including better-funded schools and access to extracurricular programs. In contrast, rural areas may struggle with fewer educational facilities and limited access to advanced courses.
- Neighborhood Quality: The quality of the neighborhood can impact educational outcomes. Communities with high crime rates or poor housing conditions may hinder students' ability to focus on their studies.

3. Health and Well-being

A student's physical and mental health can profoundly affect their educational performance.

- Physical Health: Chronic illnesses or health issues can lead to increased absenteeism, affecting learning and performance. Access to healthcare can, therefore, be considered a vital social determinant of education.
- Mental Health: Mental health issues, such as anxiety or depression, can impair a student's ability to concentrate and perform well in school. Schools that provide mental health resources can help mitigate these effects.

4. Family Environment and Support

The family environment plays a critical role in a child's educational

journey.

- **Parental Involvement:** Active participation from parents in a child's education can lead to better academic performance. This includes helping with homework, attending school meetings, and fostering a positive attitude towards education.
- **Home Environment:** A stable and supportive home environment encourages learning. Families that prioritize education and create a conducive learning atmosphere can significantly boost their children's academic success.

The Impact of Social Determinants on Educational Outcomes

Understanding the influence of social determinants on educational outcomes is vital for addressing inequalities within the education system.

1. Achievement Gaps

There are significant achievement gaps between students from different socioeconomic backgrounds.

- **Standardized Test Scores:** Students from low-income families often score lower on standardized tests compared to their wealthier peers, reflecting disparities in access to quality education and resources.
- **Graduation Rates:** Students from disadvantaged backgrounds are less likely to graduate from high school and pursue higher education, perpetuating the cycle of poverty.

2. Access to Quality Education

Access to quality education varies significantly based on social determinants.

- **Funding Disparities:** Schools in affluent areas often receive more funding than those in low-income neighborhoods, leading to differences in teacher quality, class sizes, and available resources.
- **Curriculum Quality:** Disparities in the curriculum can limit the educational experiences of students in underfunded schools, affecting their readiness for college and career.

3. Long-term Consequences

The long-term effects of social determinants on education can extend beyond the classroom.

- **Economic Mobility:** Education is closely linked to economic mobility. Individuals with higher educational attainment are more likely to secure better-paying jobs, contributing to a more stable economic future.
- **Social Outcomes:** Education influences social outcomes, including health, civic engagement, and overall quality of life. Disparities in educational attainment can lead to broader societal issues, such as increased crime rates and reduced community cohesion.

Strategies to Address Social Determinants of Education

Addressing social determinants of education requires a multifaceted approach, involving collaboration among various stakeholders.

1. Policy Interventions

- **Equitable Funding:** Ensuring equitable funding for schools, regardless of their geographic location, can help bridge the resource gap.
- **Access to Healthcare:** Policies that expand access to healthcare, including mental health services, can help mitigate the negative effects of health-related issues on education.

2. Community Support Programs

- **After-school Programs:** Providing after-school programs can offer students from disadvantaged backgrounds additional academic support and enrichment opportunities.
- **Parent Engagement Initiatives:** Programs aimed at increasing parental involvement can help foster a supportive home environment for children.

3. Educational Reforms

- **Curriculum Development:** Reforming curricula to be more inclusive and representative of diverse student backgrounds can enhance engagement and learning outcomes.
- **Teacher Training:** Investing in teacher training to equip educators with the skills to address the diverse needs of students can lead to improved educational experiences.

Conclusion

In conclusion, social determinants of education significantly influence the educational experiences and outcomes of individuals. Understanding these determinants is essential for creating equitable educational opportunities and addressing the systemic barriers that many students face. Through targeted policy interventions, community support programs, and educational reforms, it is possible to mitigate the impact of these social determinants and promote a more inclusive and effective education system. By prioritizing equity in education, we can help ensure that all students, regardless of their background, have the opportunity to succeed and reach their full potential.

Frequently Asked Questions

What are social determinants of education?

Social determinants of education are the conditions in which individuals are born, grow, live, work, and age that significantly influence their educational outcomes and opportunities.

How do socioeconomic status affect educational attainment?

Socioeconomic status often determines access to resources like quality schools, extracurricular activities, and support systems, impacting educational attainment and overall success.

What role does family engagement play in education?

Family engagement is crucial as it fosters a supportive learning environment, encourages academic achievement, and enhances communication between home and school.

How does neighborhood safety influence education?

Neighborhood safety can affect students' ability to attend school regularly and concentrate on their studies; unsafe environments may lead to higher stress levels and absenteeism.

In what ways does access to healthcare impact educational outcomes?

Access to healthcare ensures that students receive necessary medical attention, which can reduce absenteeism and improve focus, ultimately leading to better educational performance.

What impact does early childhood education have on long-term educational success?

Early childhood education is critical as it lays the foundation for cognitive and social skills, which are essential for future academic success and lifelong learning.

How do cultural factors influence education?

Cultural factors shape attitudes toward education, learning styles, and expectations, which can either enhance or hinder educational achievement depending on the support systems present.

What is the relationship between food security and educational performance?

Food insecurity can lead to poor concentration, lower energy levels, and increased absenteeism, all of which negatively affect a student's academic performance.

How can policy interventions address social determinants of education?

Policy interventions can enhance access to quality education, healthcare, and social services, reducing disparities and ensuring that all students have the resources they need to succeed.

Find other PDF article:

<https://soc.up.edu.ph/08-print/files?trackid=jYN70-9146&title=baby-physical-therapy-exercises-for-walking.pdf>

Social Determinants Of Education

SOCIAL | Restaurant + Lounge | Ottawa

SOCIAL is focused on progressive Canadian cuisine with a diverse & innovative wine selection and craft cocktail offerings. SOCIAL is one of Ottawa's most vibrant & creative restaurants with ...

MENUS | SOCIAL | Restaurant

Please note that we require a credit card for all bookings over 8+ guests. There is also a 20% gratuity added to all bookings in private rooms.

BRUNCHED+BEAUTIFUL | SOCIAL | Restaurant

WELCOME TO SOCIAL'S NEW MONTHLY DRAG SHOW, BROUGHT TO YOU BY OTTAWA'S VERY OWN UNITY PRODUCTIONS HOSTED BY FIFI HOO-KERS

HAPPENING | SOCIAL | Restaurant

SOCIAL HOUR UNWIND WITH US DAILY FROM 3PM-6PM (AND LATE NIGHT THURS-SAT) FOR GREAT DRINKS, SHAREABLE BITES, AND GOOD VIBES.

CONTACT | SOCIAL | Restaurant

CONTACT US OUR DEDICATED TEAM IS ALWAYS AVAILABLE TO ASSIST YOU WITH ANY QUESTIONS OR CONCERNS YOU MAY HAVE, AND WE STRIVE TO PROVIDE PROMPT ...

GROUP MENUS | SOCIAL | Restaurant

Please note that we require a credit card for all bookings over 8+ guests. There is also a 20% gratuity added to all bookings in private rooms.

VALENTINE'S DAY | SOCIAL | Restaurant

SOCIAL VALENTINE'S DAY MENU Set Menu \$125 / per person First Course select one of the following TWILD BOAR BELLY FRITTER PICKLED MUSTARD SEED | RASPBERRY ...

End of Summer Patio Social! | SOCIAL | Restaurant

Sep 29, 2024 · Join us at Social on September 29th for the End of Summer Patio Social! Enjoy live music by Jeff Rogers from 6-9 PM, sip your favorite drinks, and soak up the last bit of ...

PRIVATE EVENTS | SOCIAL | Restaurant

PRIVATE EVENTS AT SOCIAL, WE PRIDE OURSELVES IN EXCEEDING YOUR EVERY NEED AND EXPECTATION. EVERY FUNCTION, SMALL OR LARGE, FORMAL OR CASUAL, HAS ...

MOTHER'S DAY | SOCIAL | Restaurant

TREAT YOUR MOM, THIS MOTHER'S DAY MOTHER'S DAY BRUNCH : 11AM - 3PM BASKET OF BREAD | SM 4 / LG 7 HERB INFUSED OLIVE OIL + WHIPPED SALTED BUTTER ...

SOCIAL | Restaurant + Lounge | Ottawa

SOCIAL is focused on progressive Canadian cuisine with a diverse & innovative wine selection and craft ...

MENUS | SOCIAL | Restaurant

Please note that we require a credit card for all bookings over 8+ guests. There is also a 20% gratuity added to ...

BRUNCHED+BEAUTIFUL | SOCIAL | Restaurant

WELCOME TO SOCIAL'S NEW MONTHLY DRAG SHOW, BROUGHT TO YOU BY OTTAWA'S VERY OWN UNITY ...

HAPPENING | SOCIAL | Restaurant

SOCIAL HOUR UNWIND WITH US DAILY FROM 3PM-6PM (AND LATE NIGHT THURS-SAT) FOR GREAT DRINKS, ...

CONTACT | SOCIAL | Restaurant

CONTACT US OUR DEDICATED TEAM IS ALWAYS AVAILABLE TO ASSIST YOU WITH ANY QUESTIONS OR ...

Explore the social determinants of education and their impact on student success. Discover how

various factors shape learning outcomes. Learn more now!

[Back to Home](#)