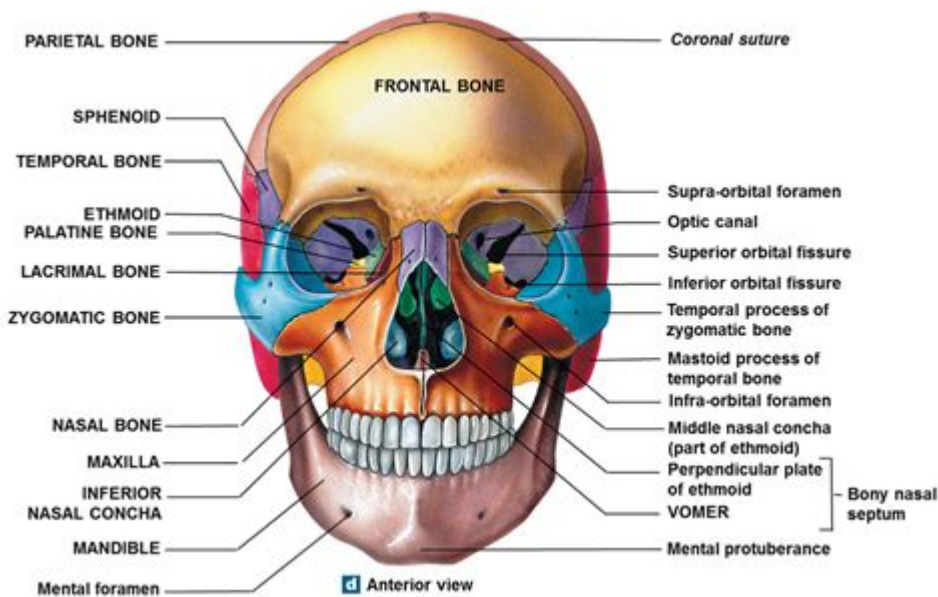


Skull Anatomy Labeling Quiz



Skull Anatomy Labeling Quiz is an engaging educational tool designed to enhance the understanding of human skull anatomy. The human skull is a complex structure, composed of various bones that provide protection for the brain, support for the face, and serve as an attachment point for muscles. A labeling quiz can serve as an effective method for students, medical professionals, and enthusiasts alike to test their knowledge of skull anatomy, reinforcing their learning through interactive participation. This article delves into the anatomy of the skull, the importance of learning it, and how a labeling quiz can facilitate deeper comprehension.

Understanding Skull Anatomy

The human skull is divided into two main sections: the cranium and the facial skeleton. Each section comprises several bones that perform specific functions.

The Cranium

The cranium, or braincase, protects the brain and supports the structures of the face. It consists of eight bones:

1. **Frontal Bone:** This bone forms the forehead and the upper part of the eye sockets.
2. **Parietal Bones (2):** These bones are located on the sides and roof of the skull, forming the bulk of the cranium.
3. **Temporal Bones (2):** Situated beneath the parietal bones, these bones house the structures of the inner

and middle ear.

4. Occipital Bone: This bone forms the back and base of the skull, containing the foramen magnum, where the spinal cord enters the skull.
5. Sphenoid Bone: This bat-shaped bone is located at the base of the skull and contributes to the eye socket.
6. Ethmoid Bone: A complex bone located between the nasal cavity and the orbits, contributing to the structure of the nasal cavity and the orbits.

The Facial Skeleton

The facial skeleton consists of 14 bones that form the structure of the face:

1. Maxillae (2): These are the upper jawbones that hold the upper teeth and form part of the orbits.
2. Zygomatic Bones (2): Also known as the cheekbones, these bones form the prominence of the cheeks and part of the orbits.
3. Nasal Bones (2): These small bones form the bridge of the nose.
4. Palatine Bones (2): These bones form part of the hard palate of the mouth and the floor of the nose.
5. Lacrimal Bones (2): The smallest bones in the face, located in the inner corner of each eye socket.
6. Inferior Nasal Conchae (2): These are thin, curved bones that form part of the lateral walls of the nasal cavity.
7. Vomer: This bone forms part of the nasal septum, dividing the nasal cavity into two nostrils.
8. Mandible: The lower jawbone, which is the only movable bone of the skull.

The Importance of Skull Anatomy Knowledge

Understanding skull anatomy is essential for several reasons:

- Medical Education: For students in medicine and dentistry, a solid grasp of skull anatomy is foundational for diagnosing and treating conditions related to the head and neck.
- Forensic Science: Forensic scientists use knowledge of skull anatomy to identify individuals based on skeletal remains.
- Anthropology: Anthropologists study skulls to understand human evolution, variation, and the relationships between different populations.
- Art and Design: Artists and animators benefit from understanding skull anatomy to create realistic representations of the human head and face.

How a Skull Anatomy Labeling Quiz Works

A skull anatomy labeling quiz typically involves a diagram or image of a human skull where participants

are asked to identify and label various bones and features. Here's how it generally works:

Format of the Quiz

1. **Visual Representation:** The quiz may use a detailed illustration or photograph of a human skull, often with some bones already labeled for reference.
2. **Interactive Elements:** Some quizzes may be interactive, allowing users to click on parts of the skull to label them, while others may be paper-based.
3. **Time Limits:** Quizzes can include timed elements to enhance the challenge, pushing participants to recall information quickly.

Types of Questions

- **Multiple Choice:** Participants select the correct bone from a list of options.
- **Fill in the Blanks:** Participants write the names of the bones in the correct places on a blank diagram.
- **True or False:** Questions that test factual knowledge about the skull and its parts.

Benefits of Taking a Labeling Quiz

- **Reinforcement of Knowledge:** Engaging with the material through active participation helps reinforce learning.
- **Identification Skills:** Practicing labeling improves the ability to identify anatomical structures in clinical or educational settings.
- **Immediate Feedback:** Many online quizzes provide instant feedback, allowing users to understand their mistakes and learn in real-time.

Tips for Preparing for a Skull Anatomy Quiz

To excel in a skull anatomy labeling quiz, participants can adopt several study strategies:

1. **Use Flashcards:** Create flashcards with images of skull bones on one side and their names on the other. This method aids memorization.
2. **Study Groups:** Collaborate with peers to quiz each other on skull anatomy, which promotes discussion and deeper understanding.
3. **Online Resources:** Utilize online platforms that offer interactive skull anatomy resources, including videos and 3D models.

4. Practice Quizzes: Take multiple practice quizzes to familiarize yourself with the format and types of questions.

Conclusion

The skull anatomy labeling quiz serves as a valuable educational tool for anyone seeking to deepen their understanding of human anatomy. The intricate structure of the skull, comprising numerous bones with specific functions, poses a significant challenge for learners. However, through engaging methods such as labeling quizzes, students and professionals can reinforce their knowledge, enhance their identification skills, and apply this knowledge in practical scenarios. Whether you are a student preparing for exams, a medical professional honing your skills, or an enthusiast eager to learn, a skull anatomy labeling quiz can provide a fun and effective way to explore the complexities of the human skull.

Frequently Asked Questions

What are the primary bones involved in the human skull anatomy quiz?

The primary bones include the frontal bone, parietal bones, temporal bones, occipital bone, sphenoid bone, and ethmoid bone.

How does a skull anatomy labeling quiz help in understanding human anatomy?

It enhances knowledge of the skull's structure, helps identify key features and landmarks, and improves retention of anatomical terminology.

What is the significance of labeling the foramen magnum in a skull anatomy quiz?

Labeling the foramen magnum is significant as it marks the opening where the spinal cord connects to the brain, crucial for understanding the central nervous system.

Which structures are commonly confused in skull anatomy quizzes?

Commonly confused structures include the maxilla and mandible, as well as the nasal bone and zygomatic bone due to their proximity and similar shapes.

What online resources are recommended for practicing a skull anatomy

labeling quiz?

Recommended resources include websites like Kenhub, Visible Body, and AnatomyZone, which offer interactive labeling quizzes and detailed anatomical illustrations.

Find other PDF article:

<https://soc.up.edu.ph/42-scope/Book?trackid=Ift87-2669&title=music-production-by-michael-zager.pdf>

Skull Anatomy Labeling Quiz

Skull - Wikipedia

The skull forms the frontmost portion of the axial skeleton and is a product of cephalization and vesicular enlargement of the brain, with several special senses structures such as the eyes, ears, nose, tongue and, in fish, specialized tactile organs such as barbels near the mouth.

Skull Emoji | Meaning, Copy And Paste - Emojipedia

A whitish-gray, cartoon-styled human skull with large, black eye sockets. Commonly expresses figurative death, e.g., dying from extreme laughter, frustration, or affection.

The Skull: Names of Bones in the Head, with Anatomy, & Labeled ...

The skull is one of the most vital bony structures of the human body, as it houses and protects the most important organs, including the brain. There are 29 bones (including the hyoid and middle ear bones) that comprise the skull and give shape to the head.

Skull Emoji - Emojigraph

A whitish-gray, cartoon-styled human skull with large, black eye sockets. Used commonly as a figure of death or deadly danger but also used to describe someone that is too skinny.

Skull Anatomy: Complete Guide with Parts, Names & Diagram

Oct 16, 2024 · Learn a skull anatomy with parts, names & detailed diagram. Complete guide for students to explore structure & function of the human skull.

Bones of the Skull - Structure - Fractures - TeachMeAnatomy

Apr 2, 2025 · The skull is a bony structure that supports the face and forms a protective cavity for the brain. It is comprised of many bones, which are formed by intramembranous ossification, and joined by sutures (fibrous joints).

Skull Pictures, Anatomy & Diagram - Healthline

Jan 20, 2018 · Parietal bone: the main side of the skull. Sphenoid bone: the bone located under the frontal bone, behind the nose and eye cavities.

7.3 The Skull - Anatomy & Physiology - Open Educational ...

The skull is the skeletal structure of the head that supports the face and protects the brain. It is subdivided into the facial bones and the cranium, or cranial vault (Figure 7.3.1). The facial bones

underlie the facial structures, form the nasal cavity, enclose the eyeballs, and support the teeth of the upper and lower jaws.

The Skull: Function, Composition, Health Problems, and More

Sep 17, 2024 · All the various skull bone parts come together to serve two major purposes. First, the skull surrounds and protects the brain, brainstem, and eyes. In addition, the skull provides ...

Skull - Anatomy, Function, Structure, Diagram, Significance

Jan 15, 2025 · The skull is a bony framework of the head, consisting of 22 bones. It is divided into two main parts: the cranium, which encases the brain, and the facial skeleton, which supports the facial structures.

Skull - Wikipedia

The skull forms the frontmost portion of the axial skeleton and is a product of cephalization and vesicular enlargement of the brain, with several special senses structures such as the eyes, ears, nose, tongue and, in fish, specialized tactile organs such as barbels near the mouth.

Skull Emoji | Meaning, Copy And Paste - Emojipedia

A whitish-gray, cartoon-styled human skull with large, black eye sockets. Commonly expresses figurative death, e.g., dying from extreme laughter, frustration, or affection.

The Skull: Names of Bones in the Head, with Anatomy, & Labeled ...

The skull is one of the most vital bony structures of the human body, as it houses and protects the most important organs, including the brain. There are 29 bones (including the hyoid and middle ear bones) that comprise the skull and give shape to the head.

Skull Emoji - Emojigraph

A whitish-gray, cartoon-styled human skull with large, black eye sockets. Used commonly as a figure of death or deadly danger but also used to describe someone that is too skinny.

Skull Anatomy: Complete Guide with Parts, Names & Diagram

Oct 16, 2024 · Learn a skull anatomy with parts, names & detailed diagram. Complete guide for students to explore structure & function of the human skull.

Bones of the Skull - Structure - Fractures - TeachMeAnatomy

Apr 2, 2025 · The skull is a bony structure that supports the face and forms a protective cavity for the brain. It is comprised of many bones, which are formed by intramembranous ossification, and joined by sutures (fibrous joints).

Skull Pictures, Anatomy & Diagram - Healthline

Jan 20, 2018 · Parietal bone: the main side of the skull. Sphenoid bone: the bone located under the frontal bone, behind the nose and eye cavities.

7.3 The Skull - Anatomy & Physiology - Open Educational Resources

The skull is the skeletal structure of the head that supports the face and protects the brain. It is subdivided into the facial bones and the cranium, or cranial vault (Figure 7.3.1). The facial bones underlie the facial structures, form the nasal cavity, enclose the eyeballs, and support the teeth of the upper and lower jaws.

The Skull: Function, Composition, Health Problems, and More

Sep 17, 2024 · All the various skull bone parts come together to serve two major purposes. First, the

skull surrounds and protects the brain, brainstem, and eyes. In addition, the skull provides the...

Skull - Anatomy, Function, Structure, Diagram, Significance

Jan 15, 2025 · The skull is a bony framework of the head, consisting of 22 bones. It is divided into two main parts: the cranium, which encases the brain, and the facial skeleton, which supports the facial structures.

Test your knowledge with our engaging skull anatomy labeling quiz! Challenge yourself and enhance your understanding today. Learn more and start quizzing now!

[Back to Home](#)