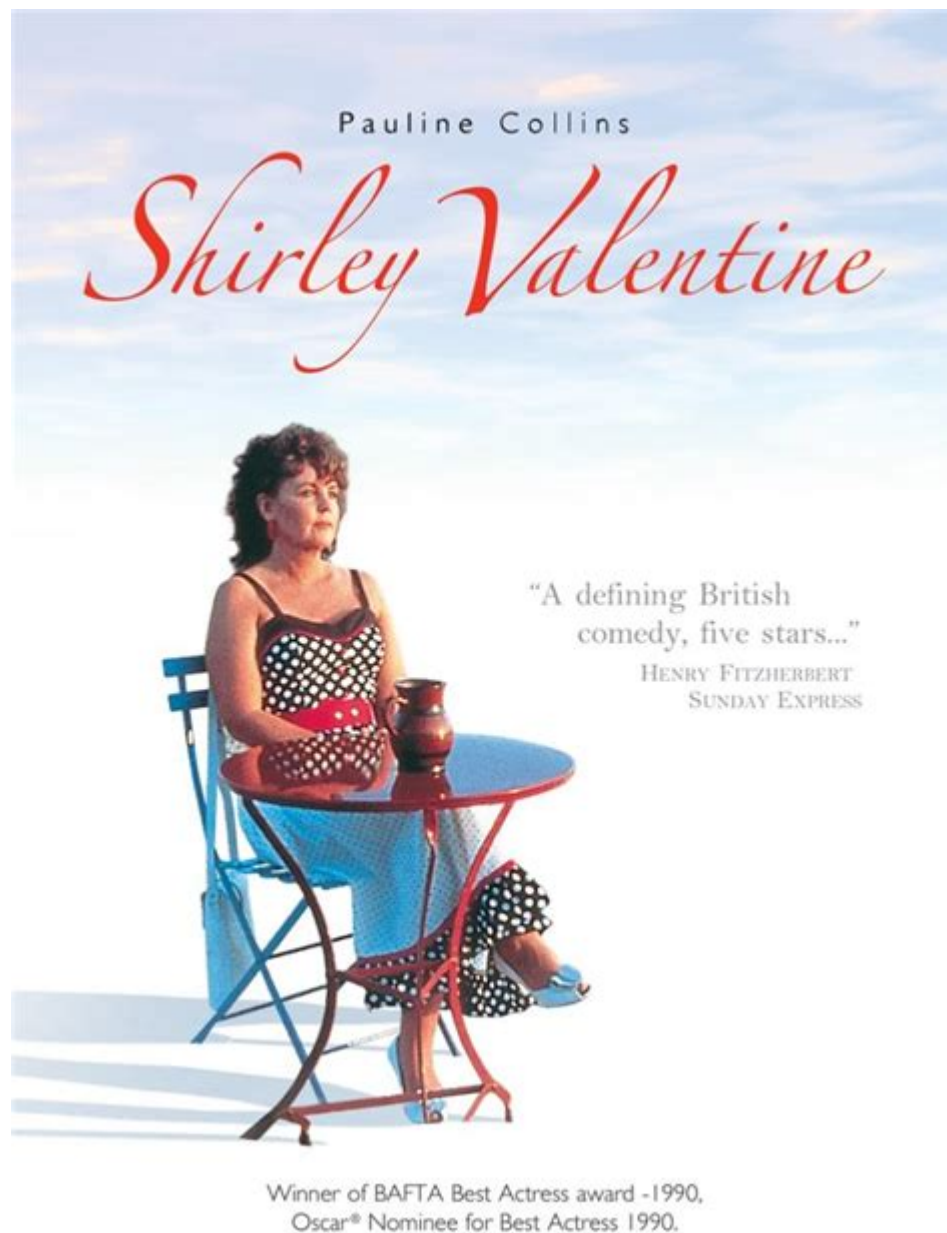


# Shirley Valentine Monologue Script



Shirley Valentine Monologue Script is an iconic piece of theatrical art that has captivated audiences since its debut. Written by Willy Russell, the play tells the story of a middle-aged woman who embarks on a journey of self-discovery and liberation. The monologue, which is delivered by the protagonist, Shirley, serves as a powerful reflection of her internal struggles, desires, and the societal expectations placed upon her. In this article, we will delve into the significance of the Shirley Valentine monologue, its themes, character analysis, and its impact on modern theatre.

# The Significance of the Shirley Valentine Monologue

The Shirley Valentine monologue script is not just a collection of words; it is a profound exploration of identity, freedom, and the pursuit of happiness. It allows the audience to connect deeply with Shirley's character as she navigates the complexities of her life.

## 1. An Introduction to Shirley Valentine

Shirley Valentine is a relatable character for many women who feel trapped in their lives. The monologue introduces her as a housewife who has dedicated her life to her family and household responsibilities. However, she finds herself feeling unfulfilled and yearning for something more.

- Background: Shirley is a 42-year-old woman living in Liverpool, England. She has spent years raising her children and catering to her husband, Joe.
- Dissatisfaction: As she speaks to the audience, we learn about her dissatisfaction with her mundane life and her desire for adventure and passion.
- Voice of a Generation: Shirley represents the voice of many women during the 1980s, a time when traditional gender roles were being challenged.

## 2. The Monologue's Structure

The Shirley Valentine monologue script is structured in a way that allows the audience to witness her transformation. The monologue is divided into several key sections:

- Opening: Shirley begins by addressing the audience directly, creating a conversational tone. This draws the audience in and makes them feel like confidants.
- Reflections on Life: She reflects on her life choices, her marriage, and her lost dreams. This section evokes empathy and understanding from the audience.
- Desire for Change: As the monologue progresses, Shirley's longing for change becomes more pronounced. She contemplates the idea of leaving her familiar life behind.
- Conclusion: The monologue culminates in a powerful declaration of her desire to reclaim her identity and make choices for herself.

## Themes Explored in the Monologue

The Shirley Valentine monologue script beautifully encapsulates several themes that resonate with audiences across generations.

# 1. Identity and Self-Discovery

One of the central themes in Shirley's monologue is the quest for identity.

- Loss of Self: Shirley grapples with the loss of her individuality as she has conformed to societal expectations.
- Rediscovery: Throughout her monologue, she embarks on a journey to rediscover who she is outside of her roles as a wife and mother.

# 2. The Desire for Freedom

Shirley's yearning for freedom is palpable in her monologue.

- Escape from Routine: She expresses a desire to break free from her monotonous routine and explore the world.
- Empowerment: The monologue ultimately serves as a declaration of empowerment as Shirley resolves to take control of her life.

# 3. The Role of Women in Society

The play comments on the societal expectations placed upon women.

- Traditional Roles: Shirley's life reflects the traditional roles of women in the 1980s, where they were often confined to domestic duties.
- Challenging Norms: Through her journey, Shirley challenges these norms and advocates for women's independence.

## Character Analysis: Shirley Valentine

The character of Shirley Valentine is richly developed and multi-dimensional.

### 1. Strengths and Weaknesses

- Strengths:
- Resilience: Despite her struggles, Shirley displays remarkable resilience and a sense of humor.
- Courage: Her courage to confront her feelings and desires is a key strength that drives the narrative.

- Weaknesses:
- Self-Doubt: Shirley often doubts her worth and abilities, which is a barrier to her self-acceptance.
- Fear of Change: Her fear of the unknown holds her back, making her journey toward self-discovery all the more poignant.

## **2. Relationship Dynamics**

Shirley's relationships play a significant role in her character development.

- Marriage with Joe: Shirley's relationship with her husband is strained. She feels unappreciated and taken for granted, which adds to her sense of entrapment.
- Friendship with Other Women: The monologue also touches on her friendships, highlighting the support system that women often provide each other.

## **Impact on Modern Theatre**

The Shirley Valentine monologue script has left a lasting impact on modern theatre and continues to inspire new generations of playwrights and performers.

### **1. A Voice for Women**

The monologue has become a powerful voice for women's issues in theatre.

- Inspiration: Many female playwrights and actors cite Shirley Valentine as an inspiration for addressing themes of female empowerment and identity in their work.
- Cultural Relevance: The themes explored in the monologue remain relevant today, making it a timeless piece.

### **2. Performance and Interpretation**

The monologue offers a wealth of opportunities for performance and interpretation.

- Acting Challenges: The depth of Shirley's character presents challenges for actors, requiring them to convey a range of emotions from vulnerability to strength.
- Directorial Choices: Directors often bring their unique vision to the play, allowing for diverse interpretations of Shirley's journey.

## Conclusion

In conclusion, the Shirley Valentine monologue script is a powerful exploration of identity, freedom, and the complexities of womanhood. Through Shirley's journey, audiences are invited to reflect on their own lives, desires, and the societal expectations they face. The monologue not only serves as a poignant character study but also as a commentary on the evolving role of women in society. As it continues to resonate with audiences around the world, Shirley Valentine remains a timeless symbol of self-discovery and empowerment. The enduring legacy of this monologue underscores the importance of giving voice to those who seek to reclaim their identity and pursue their dreams.

## Frequently Asked Questions

### **What is the main theme of the Shirley Valentine monologue?**

The main theme of the Shirley Valentine monologue revolves around self-discovery, the quest for freedom, and the challenges of midlife identity.

### **Who is the playwright of Shirley Valentine?**

The playwright of Shirley Valentine is Willy Russell.

### **What character traits define Shirley in her monologue?**

Shirley is characterized by her humor, vulnerability, longing for adventure, and a deep sense of nostalgia for her lost youth.

### **What is the significance of the setting in the Shirley Valentine monologue?**

The setting, primarily in her kitchen and later in Greece, symbolizes the contrast between Shirley's mundane life and the excitement she yearns for, highlighting her internal conflict.

### **How does Shirley's perspective on life change throughout the monologue?**

Shirley evolves from feeling trapped in her routine to embracing the possibility of change and adventure, reflecting a journey toward empowerment.

### **What role does humor play in Shirley's monologue?**

Humor serves as a coping mechanism for Shirley, allowing her to express her frustrations and make her

reflections on life more relatable and engaging.

## **What audience reactions are commonly associated with the Shirley Valentine monologue?**

Audiences often react with empathy and laughter, resonating with Shirley's struggles and aspirations, which creates a strong emotional connection.

## **How does the monologue address the concept of loneliness?**

The monologue poignantly addresses loneliness by illustrating Shirley's feelings of isolation in her marriage and her desire for companionship and understanding.

## **What literary devices are prominent in the Shirley Valentine monologue?**

Prominent literary devices include colloquial language, vivid imagery, and direct address, which make Shirley's thoughts and emotions feel immediate and personal.

## **Can the Shirley Valentine monologue be interpreted as a feminist statement?**

Yes, the monologue can be interpreted as a feminist statement, as it challenges traditional gender roles and emphasizes a woman's right to pursue her own happiness and identity.

Find other PDF article:

<https://soc.up.edu.ph/27-proof/Book?ID=LPq09-1007&title=hip-and-valley-roof-design.pdf>

## **Shirley Valentine Monologue Script**

### TaurusTX 22 - Taurus USA

Buy Now: THE MOST ADVANCED 22LR RIMFIRE PISTOL ON THE MARKET. Engineered to deliver best-in-class accuracy and reliability, this rimfire polymer sporting pistol shoots and ...

### *Home Page - Taurus USA*

The TaurusTX™ 22 is most advanced 22LR rimfire pistol on the market. Engineered to deliver best-in-class accuracy and reliability, this rimfire polymer sporting pistol shoots and feels every ...

### **Small Frame Revolvers Archives - Taurus USA**

A versatile line of purpose-built medium-frame revolvers in multiple configurations. What all revolver enthusiasts seek in a hunting revolver. The original 5-shot game changer, chambered ...

### Tracker 992 - Taurus USA

Exceptionally rugged and reliable, the Taurus Tracker® 992 is designed to handle everything it delivers. A proven design combined with the patented Taurus Ribber Grip® means you'll have ...

### **TAURUS 942 Archives - Taurus USA**

TAURUS 942 Lightweight. Low recoil. Exceptionally reliable. The all-new Taurus® 942 is an 8-shot revolver available in both 22LR and 22WMR that's ideal for concealed carry, recreational ...

### Catalog - Taurus USA

A robust line of perfect go-to self-defense revolvers offered in a variety of calibers. A versatile line of purpose-built medium-frame revolvers in multiple configurations. What all revolver ...

### **TAURUS Tracker Archives - Taurus USA**

Exceptionally rugged and reliable, the Taurus Tracker® series of revolvers are designed to handle everything it delivers. Most offer factory tuned ported barrels with gas expansion chambers to ...

### **Raging Hunter - Taurus USA**

All new this year is the Taurus Raging Hunter 460 Magnum with a 10.5 inch barrel. The new 460 Magnum revolver features a proprietary compensator that effectively tames the recoil of the ...

### Taurus 58 - Taurus USA

The Taurus 58 brings together smart design, modern materials, and high capacity to offer an ideal option for EDC (Everyday Carry) and range use alike. This new addition to the Taurus lineup ...

### **Contact Us - Taurus USA**

A robust line of perfect go-to self-defense revolvers offered in a variety of calibers. A versatile line of purpose-built medium-frame revolvers in multiple configurations. What all revolver ...

### **Hennepin County, MN population by year, race, & more**

Nov 8, 2022 · The ages, races, and population density of Hennepin County, Minnesota tell a story. Understand the shifts in demographic trends with these charts visualizing decades of population data.

### **Hennepin County, Minnesota coronavirus cases and deaths**

How is Hennepin County faring against COVID-19, both overall and at a state level? Get the answers here, with data on cases and infection rates. This pages tracks the history of coronavirus cases in Hennepin County, both ...

### Minnesota coronavirus cases and deaths | USAFacts

How is Minnesota faring against COVID-19, both overall and at a state level? Get the answers here, with data on hotspots and infection rates. This map tracks the history of coronavirus cases in Minnesota, both recent and all-time.

### *What is the income of a household in Hennepin County, MN ... - USAFacts*

Feb 19, 2025 · About \$96,300 in median income in 2019-2023. Household income is the total money received in a year — wages, pensions, investments, public assistance, and more — by everyone in a household over 15.

### *What percentage of public school funding in - USAFacts*

Dec 17, 2024 · About 12.1% or one in every eight dollars of public school funding, during the 2021-22 school year. As with most schools nationwide, Minnesota received more funding from local

or state governments than it did ...

Discover the powerful 'Shirley Valentine' monologue script that captures the essence of self-discovery. Learn more about its themes and performance tips!

[Back to Home](#)