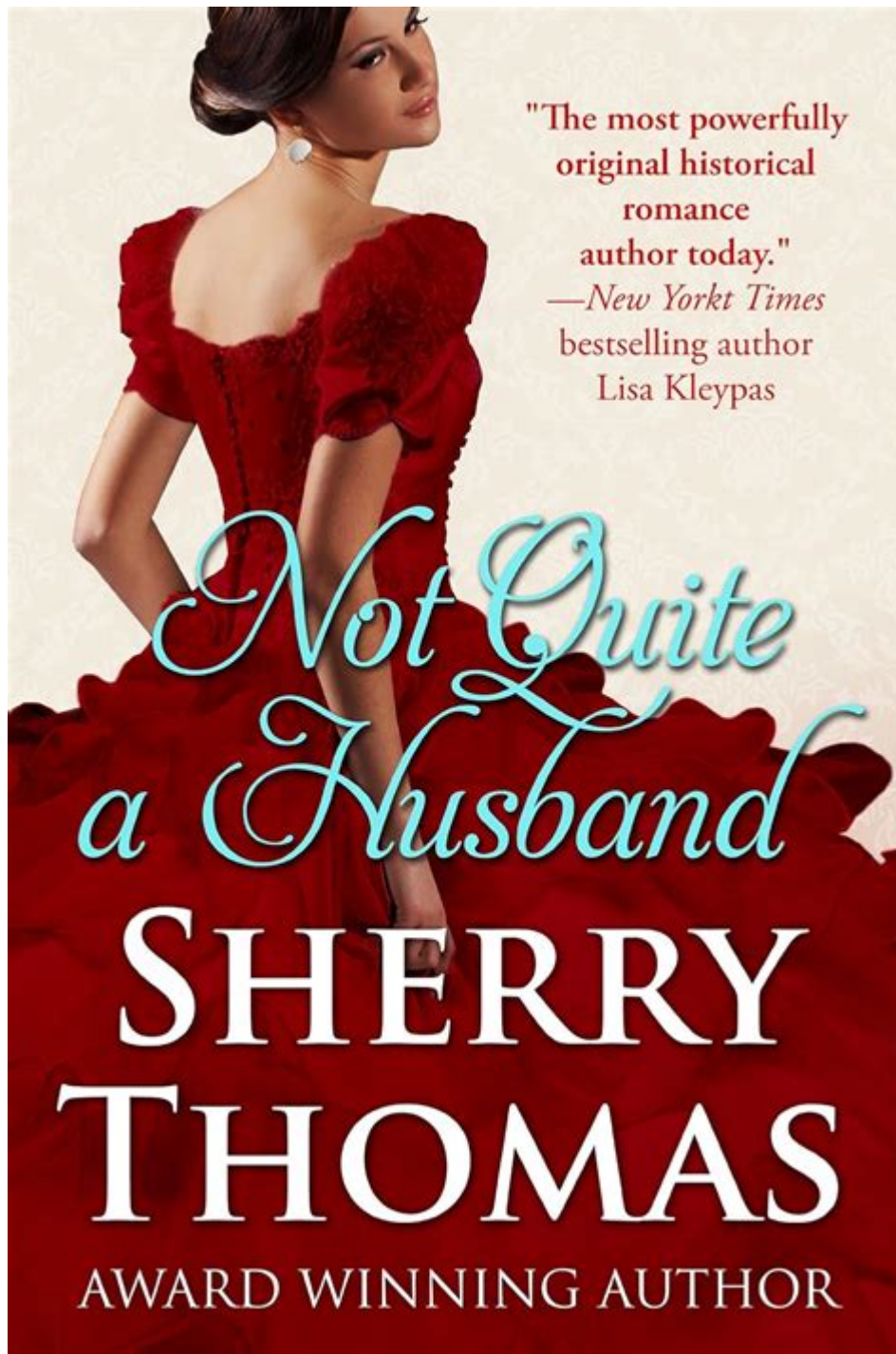


Sherry Thomas Not Quite A Husband



Sherry Thomas *Not Quite a Husband* is a captivating historical romance novel that delves into the complexities of love, identity, and the societal constraints of the Victorian era. Sherry Thomas, an acclaimed author known for her intricate plots and richly developed characters, masterfully weaves a tale that not only entertains but also evokes deep emotional responses. This article explores the themes, characters, and the overall impact of "*Not Quite a Husband*," providing readers with a comprehensive understanding of this remarkable literary work.

Overview of the Novel

"Not Quite a Husband" was published as part of Thomas's popular "Fictional Love" series, which explores the intricacies of romance set against the backdrop of historical events and societal expectations. The story is set in the late 19th century and centers around the tumultuous relationship between the two main characters, a couple who must navigate the challenges of love and the expectations of their time.

Plot Summary

The novel follows the tumultuous relationship between the protagonists, a passionate and determined woman named Bryony, and her estranged husband, a brooding and complex man named Leo. The plot unfolds as they confront their unresolved feelings and the misunderstandings that have driven them apart.

1. Introduction: The novel opens with Bryony living a life of quiet desperation, yearning for the love and connection she once shared with Leo, who has been absent from her life for years.
2. Conflict: The conflict arises when Bryony must confront her past. She discovers that Leo has returned to her life under unexpected circumstances, leading to a series of emotional confrontations and revelations.
3. Journey of Self-Discovery: As the story progresses, both Bryony and Leo embark on a journey of self-discovery, confronting their inner demons and the societal expectations that have shaped their identities.
4. Resolution: The climax of the novel culminates in a powerful resolution where both characters must decide what love truly means to them and whether they can overcome the obstacles that have kept them apart.

Themes Explored

"Not Quite a Husband" is rich with themes that resonate deeply with readers. Here are some of the most prominent themes explored in the novel:

1. Love and Redemption

At its core, the novel is a story of love and redemption. Bryony and Leo's journey illustrates that love can be complicated and messy, but it is also essential for personal growth and healing. Their struggles highlight the idea that redemption is possible through understanding, forgiveness, and the willingness to confront one's flaws.

2. Identity and Self-Discovery

The characters in "Not Quite a Husband" grapple with their identities, shaped by their past experiences and societal expectations. Bryony's journey toward self-discovery reflects her struggle to assert her independence and find her place in a world that often seeks to define her. Leo's character also undergoes significant development, as he confronts his own vulnerabilities and learns to embrace his true self.

3. Societal Expectations

The novel vividly portrays the constraints of Victorian society, particularly in relation to gender roles and marital expectations. Bryony's rebellion against these norms serves as a powerful commentary on women's rights and the quest for autonomy. The challenges she faces illustrate the struggle for self-identity in a world that often seeks to limit individual expression.

4. Forgiveness and Healing

Forgiveness is a central theme in "Not Quite a Husband." The characters must grapple with their past mistakes and the pain they have caused each other. Through their journey, the novel emphasizes the importance of forgiveness as a path to healing and reconciliation, ultimately allowing love to flourish once more.

Character Analysis

Character development is one of Sherry Thomas's strengths, and "Not Quite a Husband" is no exception. The protagonists, Bryony and Leo, are richly drawn, with complex motivations and emotional depth.

Bryony

- Independent Spirit: Bryony is a strong-willed and independent woman who defies societal norms. Her character embodies the struggle for female agency in a patriarchal society.
- Emotional Depth: Throughout the novel, Bryony's emotional journey is palpable. She navigates feelings of anger, regret, and longing, making her a relatable and sympathetic character.
- Growth: Bryony's character arc demonstrates significant growth as she learns to assert herself and confront her past. Her journey toward self-acceptance is both inspiring and empowering.

Leo

- Brooding Complexity: Leo is portrayed as a brooding and complicated man, shaped by his past experiences. His character embodies the archetype of the tortured hero, struggling with internal conflicts and societal expectations.
- Redemption Arc: Leo's journey toward redemption is intricately woven into the narrative. As he confronts his past mistakes, readers witness his transformation from a distant figure to a loving and committed partner.
- Emotional Vulnerability: Leo's character is marked by emotional vulnerability, which ultimately makes him more relatable. His struggles with love and identity resonate with readers, allowing them to connect with his journey.

Writing Style and Literary Devices

Sherry Thomas's writing style in "Not Quite a Husband" is characterized by its lyrical prose and vivid imagery. She employs various literary devices that enhance the storytelling experience:

1. Rich Descriptions

Thomas paints a vivid picture of the Victorian era through detailed descriptions of settings, clothing, and social customs. Readers are transported to a different time and place, immersing them in the world of the characters.

2. Emotional Resonance

The author skillfully captures the emotional nuances of her characters, allowing readers to feel their joys and sorrows. Through internal monologues and dialogue, the emotional depth of the characters is vividly portrayed.

3. Symbolism

Thomas employs symbolism throughout the novel, using objects and settings to represent deeper themes. For example, the contrast between Bryony's domestic surroundings and her yearning for freedom serves as a metaphor for her internal struggle.

4. Dialogue

The dialogue in "Not Quite a Husband" is sharp and engaging, reflecting the wit and intelligence of the

characters. Thomas masterfully uses dialogue to reveal character traits and advance the plot, making it an integral part of the storytelling.

Conclusion

"Not Quite a Husband" by Sherry Thomas is a poignant exploration of love, identity, and the societal expectations that shape our lives. Through the compelling journey of Bryony and Leo, readers are invited to reflect on their own experiences of love and self-discovery. The novel's rich themes, complex characters, and beautiful writing make it a standout work in the historical romance genre.

Whether readers are drawn to the emotional depth of the characters, the exploration of societal norms, or the sheer beauty of Thomas's prose, "Not Quite a Husband" offers a captivating reading experience that lingers long after the final page is turned. It is a testament to the power of love and the resilience of the human spirit, making it a must-read for fans of historical romance.

Frequently Asked Questions

What is the main premise of 'Not Quite a Husband' by Sherry Thomas?

The novel follows the story of a couple who are estranged and must confront their past and feelings for each other when they are brought back together.

Who are the main characters in 'Not Quite a Husband'?

The main characters are the estranged couple, Leo and the heroine, who navigate their complex relationship throughout the story.

What themes are explored in 'Not Quite a Husband'?

Themes of love, forgiveness, redemption, and the complexities of marriage are central to the narrative.

Is 'Not Quite a Husband' part of a series?

Yes, it is part of Sherry Thomas's 'Fallen Angels' series, which features interconnected stories about love and relationships.

How has 'Not Quite a Husband' been received by readers?

The book has been well-received, praised for its emotional depth, character development, and engaging storytelling.

What makes Sherry Thomas's writing unique in 'Not Quite a

Husband'?

Sherry Thomas's writing is known for its lyrical quality, rich historical detail, and complex characters, making the story immersive and relatable.

Are there any notable historical elements in 'Not Quite a Husband'?

Yes, the novel is set in a historical context, reflecting societal norms and issues of the time, which add depth to the characters' experiences.

What are some challenges the characters face in 'Not Quite a Husband'?

The characters face challenges such as miscommunication, past grievances, and societal pressures that test their relationship and individual growth.

Does 'Not Quite a Husband' include a happy ending?

While the story explores difficult themes, it ultimately offers a resolution that suggests hope and the possibility of rekindled love.

Would 'Not Quite a Husband' appeal to fans of historical romance?

Yes, fans of historical romance would likely enjoy 'Not Quite a Husband' due to its rich character dynamics and emotional storytelling.

Find other PDF article:

<https://soc.up.edu.ph/25-style/files?ID=HEu40-4606&title=good-how-to-speeches.pdf>

Sherry Thomas Not Quite A Husband

sherry -

sherry Sherry ...

SHERRY

Nov 8, 2009 · sherry 17%-20% Sherry 1.Fino 2.Manzanilla 3.Amountillado 4.Oloroso 5.Cream ...

-

Jerez "Sherry" "Jerez" 16 ...

2021 ...

Jun 29, 2025 · Sherry ...

...

sherry - 2025年6月28日
Sherry - 2025年6月28日 ...

sherry - 2025年6月28日
sherry - 2025年6月28日 Sherry
[ˈʃɛri] “cheri” “” “” Sherry ...

SHERRY - 2025年6月28日
Nov 8, 2009 · sherry 17%-20% Sherry 1.Fino 2.Manzanilla
3.Amountillado 4.Oloroso 5.Cream 6.Palon Cortado APTX4869 ...

sherry - 2025年6月28日
Jerez “Sherry” “Jerez” 16 ...

2021 - 2025年6月28日
Jun 29, 2025 · Sherry 1g 500g 15.5—18 ...

sherry - 2025年6月28日
Sherry ...

sherry - 2025年6月28日
Jul 27, 2024 · SHERRY ...

“” - 2025年6月28日
bup “” “” Sherry APTX4869 ...

Cherry Fairy Shirley Sweety - 2025年6月28日
Aug 16, 2020 · Cherry Fairy Shirley Sweety ...

Sherry Hanyu - 2025年6月28日
Jun 28, 2025 · Sherry Hanyu is a Zhihu user with no answers or likes yet.

esc - 2025年6月28日
May 19, 2024 · esc 1. ESC esc 2. Fn 3. NumLock Fn NumLock Esc NumLock ...

Discover the enchanting world of Sherry Thomas's 'Not Quite a Husband.' Uncover the romance and intrigue in this captivating tale. Learn more!

[Back to Home](#)