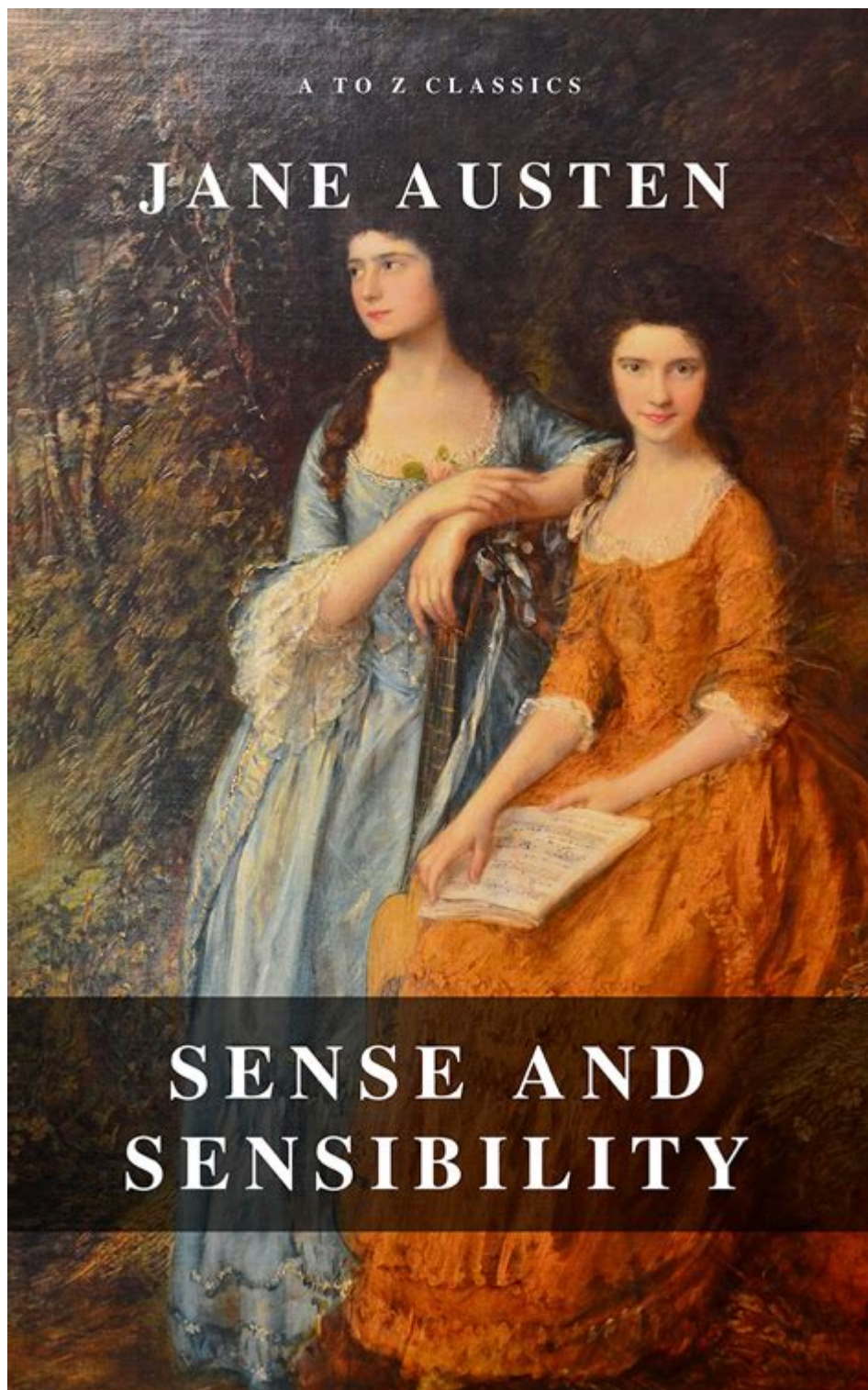


Sense And Sensibility By Jane Austen



SENSE AND SENSIBILITY IS ONE OF JANE AUSTEN'S MOST CELEBRATED NOVELS, FIRST PUBLISHED IN 1811. THE NOVEL EXPLORES THE LIVES AND ROMANTIC ENTANGLEMENTS OF THE DASHWOOD SISTERS, ELINOR AND MARIANNE, AS THEY NAVIGATE SOCIETAL EXPECTATIONS, PERSONAL VALUES, AND THE PURSUIT OF LOVE IN EARLY 19TH-CENTURY ENGLAND. THROUGH ITS ENGAGING NARRATIVE AND RICH CHARACTER DEVELOPMENT, AUSTEN EXAMINES THE BALANCE BETWEEN RATIONALITY AND EMOTION, THEMES THAT RESONATE WITH READERS EVEN TODAY.

OVERVIEW OF THE NOVEL

SENSE AND SENSIBILITY IS STRUCTURED AROUND THE CONTRASTING PERSONALITIES OF THE TWO MAIN CHARACTERS, ELINOR AND MARIANNE DASHWOOD. AS THE DAUGHTERS OF THE DECEASED MR. DASHWOOD, THEY FACE THE CHALLENGES OF FINANCIAL INSECURITY AND SOCIETAL PRESSURES IN A PATRIARCHAL SOCIETY. THE NOVEL IS SET IN A PERIOD WHEN WOMEN WERE HEAVILY RELIANT ON MARRIAGE FOR ECONOMIC SECURITY, AND THIS CONTEXT SHAPES THE CHARACTERS' ACTIONS AND DECISIONS.

PLOT SUMMARY

THE STORY BEGINS WITH THE DEATH OF MR. DASHWOOD, WHICH LEAVES HIS WIFE AND DAUGHTERS IN PRECARIOUS FINANCIAL CIRCUMSTANCES. THE DASHWOOD WOMEN ARE FORCED TO LEAVE THEIR FAMILY ESTATE, NORLAND PARK, AND RELOCATE TO A MODEST HOME IN DEVONSHIRE. THIS TRANSITION MARKS THE BEGINNING OF THEIR JOURNEY TOWARD SELF-DISCOVERY AND ROMANTIC EXPLORATION.

1. THE DASHWOOD SISTERS: THE PRIMARY FOCUS REMAINS ON ELINOR, THE SENSIBLE AND COMPOSED ELDEST SISTER, AND MARIANNE, THE PASSIONATE AND IMPULSIVE YOUNGER SISTER. THEIR DIFFERING APPROACHES TO LOVE AND LIFE FORM THE CRUX OF THE NARRATIVE.

2. ROMANTIC INTERESTS: THE SISTERS ENCOUNTER VARIOUS SUITORS, INCLUDING EDWARD FERRARS, COLONEL BRANDON, AND JOHN WILLOUGHBY. EACH CHARACTER REPRESENTS DIFFERENT ASPECTS OF LOVE, COMMITMENT, AND SOCIETAL EXPECTATION.

3. CONFLICT AND RESOLUTION: THROUGHOUT THE NOVEL, MISUNDERSTANDINGS, SOCIETAL PRESSURES, AND PERSONAL DILEMMAS CREATE TENSION. THE RESOLUTION COMES AS THE SISTERS LEARN TO NAVIGATE THEIR EMOTIONS AND INTELLECT, ULTIMATELY LEADING TO PERSONAL GROWTH AND FULFILLMENT.

THEMATIC ELEMENTS

SENSE AND SENSIBILITY DELVES INTO SEVERAL SIGNIFICANT THEMES THAT ARE RELEVANT TO ITS HISTORICAL CONTEXT AND TO MODERN READERS.

1. SENSE VS. SENSIBILITY

THE TITLE ITSELF REPRESENTS THE ONGOING STRUGGLE BETWEEN RATIONALITY AND EMOTION.

- ELINOR DASHWOOD EMBODIES "SENSE." SHE IS PRAGMATIC, COMPOSED, AND VALUES SOCIAL PROPRIETY. HER APPROACH TO RELATIONSHIPS IS CAUTIOUS AND CALCULATED, REFLECTING HER UNDERSTANDING OF THE SOCIAL LANDSCAPE IN WHICH SHE LIVES.
- MARIANNE DASHWOOD, ON THE OTHER HAND, EPITOMIZES "SENSIBILITY." SHE IS IMPULSIVE, PASSIONATE, AND OPENLY EXPRESSES HER EMOTIONS. HER CHARACTER CHALLENGES THE SOCIETAL NORMS OF HER TIME, ADVOCATING FOR THE IMPORTANCE OF FEELING AND PERSONAL EXPRESSION.

THIS DICHOTOMY SERVES AS A LENS THROUGH WHICH THE NOVEL EXAMINES THE BALANCE NECESSARY FOR A FULFILLING LIFE, ESPECIALLY IN MATTERS OF THE HEART.

2. MARRIAGE AND ECONOMIC SECURITY

MARRIAGE IS A VITAL THEME IN THE NOVEL, NOT ONLY AS A ROMANTIC IDEAL BUT AS A MEANS OF ECONOMIC SURVIVAL.

- SOCIAL EXPECTATIONS: THE SOCIAL SETTING OF THE EARLY 19TH CENTURY PLACED IMMENSE PRESSURE ON WOMEN TO MARRY

WELL. THE DASHWOOD SISTERS' FINANCIAL VULNERABILITY EMPHASIZES THE IMPORTANCE OF MARRIAGE AS A MEANS OF SECURING THEIR FUTURE.

- DIFFERENT MOTIVATIONS: EACH CHARACTER'S MOTIVATIONS FOR MARRIAGE DIFFER SIGNIFICANTLY:
- ELINOR IS MOTIVATED BY SECURE COMPANIONSHIP AND RESPECT.
- MARIANNE DESIRES PASSIONATE LOVE, OFTEN OVERLOOKING PRACTICAL CONSIDERATIONS.

THIS THEME UNDERSCORES THE SOCIETAL CONSTRUCTS OF THE TIME, WHERE LOVE AND ECONOMIC STABILITY WERE OFTEN INTERTWINED.

3. SOCIAL CLASS AND MOBILITY

THE NOVEL ALSO ADDRESSES ISSUES OF SOCIAL CLASS AND THE MOBILITY (OR LACK THEREOF) WITHIN THE RIGID CLASS STRUCTURE OF THE TIME.

- CLASS DISTINCTIONS: CHARACTERS LIKE MR. WILLOUGHBY AND COLONEL BRANDON ILLUSTRATE THE COMPLEXITIES OF CLASS AND WEALTH. WILLOUGHBY, DESPITE HIS CHARM AND APPEAL, REPRESENTS A RECKLESS APPROACH TO LIFE, WHILE BRANDON EMBODIES THE QUALITIES OF A RESPONSIBLE GENTLEMAN.
- IMPACT ON RELATIONSHIPS: THE CHARACTERS' SOCIAL STANDINGS INFLUENCE THEIR RELATIONSHIPS, DEMONSTRATING HOW CLASS CAN DICTATE THE POSSIBILITIES OF LOVE AND MARRIAGE.

CHARACTER ANALYSIS

SENSE AND SENSIBILITY FEATURES A RICH TAPESTRY OF CHARACTERS, EACH CONTRIBUTING TO THE THEMES AND OVERALL NARRATIVE.

ELINOR DASHWOOD

ELINOR SERVES AS THE MORAL COMPASS OF THE NOVEL.

- STRENGTHS: HER RATIONAL THINKING, SELF-CONTROL, AND ABILITY TO REMAIN COMPOSED UNDER PRESSURE MAKE HER A RELATABLE AND ADMIRABLE CHARACTER.
- CHALLENGES: ELINOR GRAPPLES WITH HER FEELINGS FOR EDWARD FERRARS, ESPECIALLY AS SHE NAVIGATES SOCIETAL EXPECTATIONS AND HER FAMILY'S NEEDS.

MARIANNE DASHWOOD

MARIANNE IS THE EMBODIMENT OF YOUTHFUL PASSION AND EMOTIONAL DEPTH.

- CHARACTERISTICS: SHE IS OUTSPOKEN, ROMANTIC, AND OFTEN DISREGARDS SOCIETAL NORMS, FAVORING HER FEELINGS OVER SOCIAL PROPRIETY.
- GROWTH: THROUGHOUT THE NOVEL, MARIANNE LEARNS THE VALUE OF MODERATION AND THE NEED TO TEMPER HER EMOTIONS WITH REASON AS SHE FACES HEARTBREAK AND DISAPPOINTMENT.

OTHER KEY CHARACTERS

- EDWARD FERRARS: ELINOR'S LOVE INTEREST, REPRESENTING QUIET STRENGTH AND MORAL INTEGRITY. HIS STRUGGLES WITH FAMILY OBLIGATIONS ADD DEPTH TO HIS CHARACTER.
- COLONEL BRANDON: A MAN OF HONOR AND DEPTH, HE CONTRASTS SHARPLY WITH THE MORE SUPERFICIAL CHARACTERS,

PROVIDING A MATURE MODEL OF LOVE AND LOYALTY.

- JOHN WILLOUGHBY: INITIALLY CHARMING AND ATTRACTIVE, WILLUGHBY'S EVENTUAL REVEAL AS SELF-SERVING HIGHLIGHTS THE DANGERS OF PRIORITIZING PASSION OVER SENSE.

LITERARY STYLE AND NARRATIVE TECHNIQUES

AUSTEN'S WRITING IN *SENSE AND SENSIBILITY* EMPLOYS SEVERAL LITERARY DEVICES THAT ENHANCE THE STORYTELLING.

1. FREE INDIRECT SPEECH

AUSTEN EXPERTLY USES FREE INDIRECT DISCOURSE TO PROVIDE INSIGHTS INTO HER CHARACTERS' THOUGHTS AND FEELINGS. THIS TECHNIQUE ALLOWS READERS TO EXPERIENCE THE INTERNAL CONFLICTS OF ELINOR AND MARIANNE, BRIDGING THE GAP BETWEEN NARRATOR AND CHARACTER.

2. IRONY AND SATIRE

AUSTEN'S USE OF IRONY OFTEN CRITIQUES SOCIETAL NORMS AND THE LIMITATIONS PLACED ON WOMEN. THE CONTRAST BETWEEN CHARACTERS' ACTIONS AND SOCIETAL EXPECTATIONS HIGHLIGHTS THE ABSURDITIES OF THE TIME. THROUGH WIT AND HUMOR, AUSTEN INVITES READERS TO REFLECT ON THE NATURE OF LOVE AND RELATIONSHIPS.

3. SYMBOLISM

AUSTEN EMPLOYS VARIOUS SYMBOLS THROUGHOUT THE NOVEL, SUCH AS:

- THE DASHWOOD HOME: THE SISTERS' HOME SERVES AS A SYMBOL OF THEIR CHANGING FORTUNES AND THE TRANSIENT NATURE OF SECURITY.
- LETTERS: CORRESPONDENCE BETWEEN CHARACTERS OFTEN SERVES AS A VEHICLE FOR MISUNDERSTANDING AND REVELATION, REFLECTING THE IMPORTANCE OF COMMUNICATION IN RELATIONSHIPS.

CONCLUSION

SENSE AND SENSIBILITY REMAINS A TIMELESS EXPLORATION OF THE HUMAN EXPERIENCE, CAPTURING THE COMPLEXITIES OF LOVE, FAMILY, AND SOCIETAL EXPECTATIONS. THROUGH THE CONTRASTING CHARACTERS OF ELINOR AND MARIANNE DASHWOOD, JANE AUSTEN MASTERFULLY ILLUSTRATES THE DELICATE BALANCE BETWEEN SENSE AND SENSIBILITY, ENCOURAGING READERS TO REFLECT ON THEIR VALUES AND CHOICES IN LIFE. THE NOVEL'S RICH THEMES, MEMORABLE CHARACTERS, AND AUSTEN'S KEEN SOCIAL COMMENTARY CONTINUE TO ENGAGE AND RESONATE, ENSURING ITS PLACE AS A CORNERSTONE OF ENGLISH LITERATURE.

FREQUENTLY ASKED QUESTIONS

WHAT ARE THE CENTRAL THEMES OF 'SENSE AND SENSIBILITY'?

THE CENTRAL THEMES OF 'SENSE AND SENSIBILITY' INCLUDE THE CONTRAST BETWEEN REASON AND EMOTION, THE IMPORTANCE OF SOCIAL CLASS AND ECONOMIC SECURITY, AND THE COMPLEXITIES OF LOVE AND RELATIONSHIPS.

HOW DO THE CHARACTERS OF ELINOR AND MARIANNE DASHWOOD EMBODY THE CONCEPTS OF SENSE AND SENSIBILITY?

ELINOR DASHWOOD REPRESENTS 'SENSE' THROUGH HER RATIONALITY, SELF-CONTROL, AND PRACTICALITY, WHILE MARIANNE EMBODIES 'SENSIBILITY' WITH HER EMOTIONAL OPENNESS, SPONTANEITY, AND ROMANTIC IDEALS.

WHAT ROLE DOES SOCIAL CLASS PLAY IN THE RELATIONSHIPS DEPICTED IN 'SENSE AND SENSIBILITY'?

SOCIAL CLASS SIGNIFICANTLY INFLUENCES THE RELATIONSHIPS IN 'SENSE AND SENSIBILITY', HIGHLIGHTING ISSUES SUCH AS MARRIAGE FOR FINANCIAL STABILITY VERSUS LOVE, AND THE LIMITATIONS PLACED ON WOMEN IN THE EARLY 19TH CENTURY.

HOW DOES JANE AUSTEN USE IRONY IN 'SENSE AND SENSIBILITY'?

AUSTEN EMPLOYS IRONY TO CRITIQUE SOCIETAL NORMS AND BEHAVIOR, OFTEN REVEALING THE DISCREPANCIES BETWEEN CHARACTERS' PERCEPTIONS AND REALITY, SUCH AS IN THE INTERACTIONS BETWEEN SUITORS AND THEIR TRUE INTENTIONS.

WHAT IS THE SIGNIFICANCE OF THE SETTING IN 'SENSE AND SENSIBILITY'?

THE SETTING, PRIMARILY IN RURAL ENGLAND, REFLECTS THE SOCIAL STRUCTURES AND VALUES OF THE TIME, SERVING AS A BACKDROP FOR THE CHARACTERS' STRUGGLES WITH LOVE, FINANCIAL SECURITY, AND SOCIETAL EXPECTATIONS.

HOW DOES THE ENDING OF 'SENSE AND SENSIBILITY' REFLECT THE MAIN CHARACTERS' GROWTH?

THE ENDING OF 'SENSE AND SENSIBILITY' SHOWS ELINOR'S ACCEPTANCE OF HER FEELINGS AND MARIANNE'S MATURATION, ILLUSTRATING HOW BOTH CHARACTERS FIND A BALANCE BETWEEN SENSE AND SENSIBILITY IN THEIR ROMANTIC ENDEAVORS.

WHAT IS THE ROLE OF SECONDARY CHARACTERS IN 'SENSE AND SENSIBILITY'?

SECONDARY CHARACTERS, SUCH AS WILLOUGHBY AND COLONEL BRANDON, SERVE TO HIGHLIGHT THE MAIN CHARACTERS' TRAITS AND DILEMMAS, WHILE ALSO PROVIDING CONTRASTING PERSPECTIVES ON LOVE AND MORALITY.

HOW DOES AUSTEN EXPLORE THE CONCEPT OF MARRIAGE IN 'SENSE AND SENSIBILITY'?

AUSTEN EXPLORES MARRIAGE AS BOTH A SOCIAL CONTRACT AND A ROMANTIC IDEAL, CRITIQUING MARRIAGES BASED ON CONVENIENCE WHILE ADVOCATING FOR GENUINE LOVE AND MUTUAL RESPECT IN RELATIONSHIPS.

IN WHAT WAYS DOES 'SENSE AND SENSIBILITY' REFLECT THE HISTORICAL CONTEXT OF ITS TIME?

THE NOVEL REFLECTS EARLY 19TH-CENTURY ENGLAND'S GENDER ROLES, CLASS STRUCTURES, AND ECONOMIC REALITIES, SHOWCASING THE LIMITED OPTIONS AVAILABLE TO WOMEN AND THE SOCIETAL PRESSURES SURROUNDING MARRIAGE AND INHERITANCE.

Find other PDF article:

<https://soc.up.edu.ph/45-file/files?docid=edX29-8507&title=organic-chemistry-reaction-mechanisms-cheat-sheet.pdf>

Sense And Sensibility By Jane Austen

~~~~~“**sense**”~~~~~ - ~~~

~~~~~sense~~~~~sense~~~~~sense~~~~~sense,~~~~~  
~~~~~sense~~~~~

~~~~~ - ~~~

win10~~~~~...

~~~~~**meaning, sense,reference,concept,** ~~~~~?

meaning can be divided into sense and reference reference=concept: what the word refers to in the real physical world (~~~~triangle of significance ~~~~reference) sense:the mental content called up by the symbol, the inherent meaning of a linguistic form, abstract and de-contextualized, conceptual meaning, collection of all its feature.

**Qlik Sense** - ~~~

1.Qlik Sense~~~~~2~~~~~——professional user~analyzer user. ~~~~~ (professional user)~~~~~Qlik Sense~~~~~ ~~~~~Qlik Sense~~~~~ ...

Homophones: scents, sense, cents & since - WordReference Forums

Aug 15, 2007 · I wanted to get a general idea from other native speakers as to whether or not the following four words are homophones in your pronunciation: sense - Animals have a sixth sense. scents - The scents of the perfumes were amazing. cents - I only have one dollar and five cents. since\* - Since it's...

make sense~~~~~ - ~~~

makes sense ~~~~~ it makes some sense.~~~~~ ~~~~~  
~~~~~ It doesn't make any sense.~~~~~

~~~~~**remote sensing**~~~~~**top**~ - ~~~

2023~3~20 Remote Sensing ~~~ ~~~~~ ~~~~~TOP~IEEE Transactions on Instrumentation and Measurement~~~~~IEEE TIM~~~~~

~~~~~*reference*~~~~~*sense*~~~~~*reference*~~~~~*reference* ...

~~~~~ Cherry toy ~~~ ~~~reference~referent~~~~~reference~word meaning~~~~~sense  
~reference~~~~reference~~~~~ 1. referent = object = thing~~tree~2. reference =  
thought = relationship reference~~~~~

**remote sensing** ~j-stars ~~~~~ - ~~~

~~~~~remote sensing~MDPI~~~~~J-stars~IEEE journal of sel...

~~~~~Sense~~~~~ - ~~~

Sep 26, 2021 · ~~~Sense~~~~~ ~~~~~Sense~~~~~

~~~~~“**sense**”~~~~~ - ~~~

~~~~~sense~~~~~sense~~~~~sense~~~~~sense,~~~~~  
~~~~~ ...

[illegible]

meaning can be divided into sense and reference reference=concept: what the word refers to in the real physical world (triangle of significance reference) sense:the mental ...

1. Qlik Sense 2.0 — professional user / analyzer user. (professional user) Qlik Sense ...

Aug 15, 2007 · I wanted to get a general idea from other native speakers as to whether or not the following four words are homophones in your pronunciation: sense - Animals have a sixth ...

makes sense. It makes some sense. It doesn't make ...

2023-3-20 Remote Sensing 2023-3-20 TOP-IEEE Transactions on Instrumentation and Measurement-IEEE ...

```

#####  #####  #####
##### Cherry toy ##### reference[referent#####reference[word meaning#####sense
#####reference#####reference##### ...

```

remote sensing MDPI stars IEEE journal of sel...

Sep 26, 2021 · SenseSense
 ...

Explore "Sense and Sensibility" by Jane Austen

[Back to Home](#)