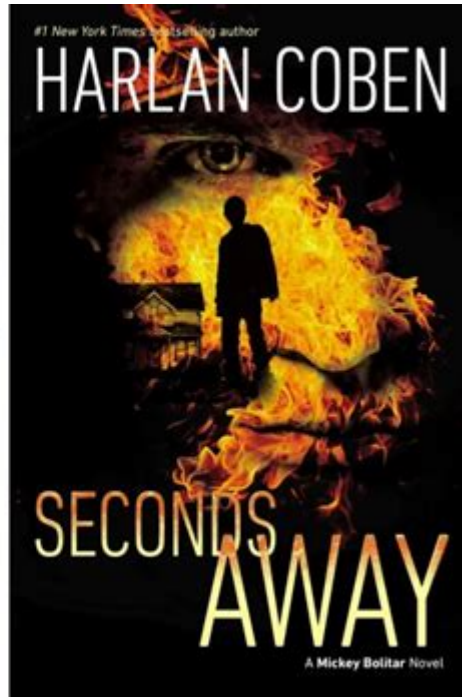
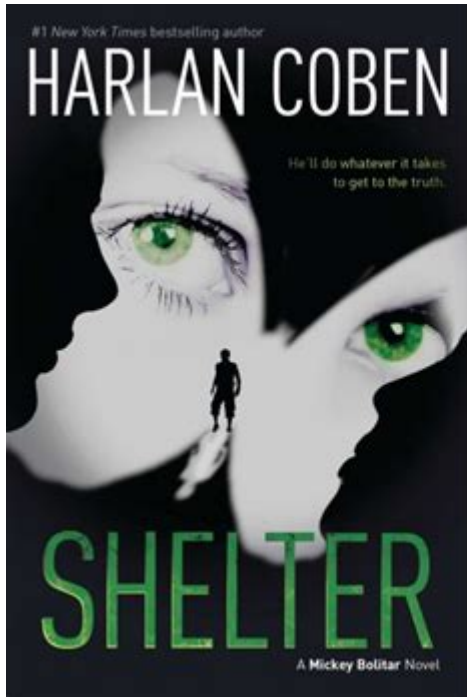


Shelter Mickey Bolitar 1 Harlan Coben



Shelter Mickey Bolitar 1 Harlan Coben is the first novel in a captivating young adult series created by bestselling author Harlan Coben. Released in 2011, this book serves as an introduction to Mickey Bolitar, a teenager navigating the challenges of life, loss, and mystery. With Coben's signature storytelling style, "Shelter" combines elements of suspense, drama, and the complexities of adolescence, making it an engaging read for both young adults and adult fans of the genre.

Overview of the Plot

The story begins with Mickey Bolitar's life being turned upside down after the tragic death of his father. Struggling to cope with his grief, Mickey moves in with his estranged uncle, Myron Bolitar, who is also a prominent character in Coben's adult novels. Mickey's transition is anything but smooth; he grapples with the emotional fallout of his father's death while trying to fit into a new school and community.

Key Themes

Several themes are woven throughout "Shelter," which contribute to its depth and resonance:

1. **Loss and Grief:** The novel explores how Mickey deals with the death of his father. His journey reflects the various stages of grief, including denial, anger, and acceptance.
2. **Friendship and Loyalty:** Mickey forms new friendships that become pivotal as the story unfolds. The bonds he creates with his friends are tested, showcasing the importance of loyalty and support during difficult times.
3. **Identity and Self-Discovery:** As a teenager, Mickey is on a quest to understand himself beyond the shadows of his family's past. His experiences lead him to discover his strengths and values.
4. **Mystery and Suspense:** True to Coben's style, the narrative is infused with mystery. Mickey finds himself entangled in a web of secrets involving his missing classmate, which propels the plot forward.

Characters

The characters in "Shelter" are richly developed and contribute significantly to the story's emotional depth.

Mickey Bolitar

Mickey is the protagonist of the novel. He is a typical teenager who is smart, athletic, and fiercely loyal to his friends. However, his father's death weighs heavily on him, affecting his behavior and outlook on life. Throughout the novel, Mickey evolves from a grieving boy into a determined young man who seeks the truth.

Myron Bolitar

Myron, Mickey's uncle, is a former basketball star turned sports agent. He is a central figure in Mickey's life, providing guidance and support as Mickey navigates his new reality. Myron's character adds a layer of complexity, as readers are familiar with him from Coben's adult series.

Ema Thompson

Ema is one of Mickey's closest friends and an essential ally in his quest for answers. She is outspoken, fiercely independent, and has her own backstory that adds depth to the narrative. Ema's character represents the importance of friendship and loyalty.

Spoon

Spoon is another of Mickey's friends who provides comic relief and loyalty. His character balances the heavier themes of the book with lighthearted moments, making him an endearing presence in Mickey's life.

Ashley Kent

Ashley is a pivotal character whose disappearance sets off the chain of events that drives the plot. Her mysterious circumstances are at the heart of the novel's suspense and intrigue.

The Mystery

The central mystery of "Shelter" revolves around the disappearance of Ashley Kent, a popular girl at Mickey's school. As Mickey investigates her sudden vanishing, he uncovers dark secrets that shake the foundations of his new community. The intertwining of Mickey's personal struggles with the search for Ashley creates a gripping narrative that keeps readers on the edge of their seats.

Key Plot Points

1. Mickey's Investigation: Driven by a desire to help and understand, Mickey embarks on a quest to find Ashley. His determination leads him to confront various characters, each with their own secrets.
2. Uncovering Secrets: As Mickey delves deeper, he discovers that Ashley's life was more complicated than it appeared. This revelation underscores the theme of hidden identities and the masks people wear.
3. Confrontation and Resolution: The climax of the novel brings Mickey face-to-face with the truth about Ashley's disappearance, leading to a dramatic confrontation that tests his courage and

resolve.

Writing Style

Harlan Coben's writing style in "Shelter" is engaging, characterized by:

- **Fast-Paced Narrative:** The story unfolds at a brisk pace, keeping readers engaged through suspenseful twists and turns.
- **Relatable Characters:** Coben creates characters that resonate with readers, particularly teenagers, as they navigate their own challenges and dilemmas.
- **Witty Dialogue:** The interactions between characters are sharp and witty, providing moments of humor that balance the heavier themes.

Reception and Impact

Upon its release, "Shelter" received positive reviews from critics and readers alike. It was praised for its ability to tackle serious themes while remaining accessible to a younger audience. The novel's success led to the development of subsequent books in the Mickey Bolitar series, including "Seconds Away," "Found," and "Home." Each installment continues to explore Mickey's journey as he faces new challenges and mysteries.

Awards and Recognition

While "Shelter" did not win major literary awards, it significantly impacted young adult literature. Coben's reputation as a master storyteller helped elevate the genre, making "Shelter" a staple for both young adult readers and Coben's established fanbase.

Conclusion

"Shelter Mickey Bolitar 1 Harlan Coben" is more than just a young adult mystery; it is a poignant exploration of loss, friendship, and the quest for identity. Through Mickey's journey, Coben not only captivates readers with a thrilling plot but also invites them to reflect on their own experiences with grief and resilience. The novel serves as a powerful reminder of the strength found in friendship and the courage needed to confront life's challenges. As the first book in a series, "Shelter" sets the stage for Mickey Bolitar's ongoing adventures, ensuring that readers will be eager to follow him in the installments that follow.

Frequently Asked Questions

What is 'Shelter' by Harlan Coben about?

'Shelter' follows Mickey Bolitar, a teenager who navigates the challenges of adolescence while trying to uncover the truth behind his father's mysterious death and his girlfriend's disappearance.

Is 'Shelter' part of a series?

Yes, 'Shelter' is the first book in the Mickey Bolitar series, which continues with titles like 'Seconds Away' and 'Found'.

What themes are explored in 'Shelter'?

'Shelter' explores themes of friendship, loss, love, and the struggle for identity during the tumultuous teenage years.

Who is the main character in 'Shelter'?

The main character is Mickey Bolitar, a 16-year-old boy dealing with personal tragedy and trying to solve the mysteries surrounding his life.

What genre does 'Shelter' fall under?

'Shelter' is a young adult mystery thriller, combining elements of suspense and drama.

How does Mickey Bolitar differ from other characters in Harlan Coben's works?

Mickey Bolitar is unique as he is a younger protagonist compared to Coben's adult characters, allowing for a fresh perspective on crime and mystery.

Are there any notable supporting characters in 'Shelter'?

Yes, notable supporting characters include Mickey's friends, Ema and Spoon, who help him navigate the challenges he faces.

What makes 'Shelter' appealing to young adult readers?

'Shelter' appeals to young adult readers through its relatable protagonist, fast-paced plot, and exploration of real-life issues faced by teenagers.

Find other PDF article:

<https://soc.up.edu.ph/01-text/Book?dataid=dbX58-4000&title=2012-chrysler-town-and-country-36-serpentine-belt-diagram.pdf>

Shelter Mickey Bolitar 1 Harlan Coben

Shelters - City of Toronto

Shelters provide temporary accommodation and related support services that assist people to move into housing. All locations are staffed 24 hours a day, seven days a week, and provide wrap-around supports, including: All shelters must meet Toronto Shelter Standards.

Housing + Shelter - The Salvation Army

Salvation Army safe houses provide a restorative environment where survivors of human trafficking, exploitation, and domestic abuse bridge a life of fear and instability to one of safety and security. Programs include specialized counselling, cooking classes, life ...

Ontario - ShelterSafe

Ontario To find a shelter, type a location or address into the search bar or use the map and mouse controls to zoom in. If you know the name of the shelter/transition house you're looking for, scroll down to the list beneath the map and use the search bar there.

Peel Family Shelter (PFS) - Services and Housing In the Province

It is owned and operated by the Region of Peel with SHIP providing the on-site services. The program provides emergency housing and housing support services to families in the Region of Peel who are homeless or at risk of homelessness. The building has 120 units and is staffed 24/7.

Alberta's homelessness response | Alberta.ca

Emergency shelters are always open, ready to help anyone every day. They provide 24/7 emergency accommodation and a safe place to stay when you do not have a permanent address. Transitional shelters provide more private, long-term accommodation with supports to help people move to permanent housing and live on their own.

Housing & Shelter - City of Toronto

Learn more about emergency shelters, 24-hour respite sites, drop-ins and housing help. Explore City-run long-term care homes with 24/7 care, safety measures, and inclusive services. Find ...

Home - ShelterSafe

If you or someone you know needs help or wants to speak to a shelter worker, you can find your closest women's shelter and their crisis line on this website, sheltersafe.local. Remember that you can get advice and safety planning through their crisis line without moving into the shelter.

Homeless Help - City of Toronto

Shelters provide temporary accommodation and related support services that assist people to move into housing. To access a shelter call Central Intake: 416-338-4766, 1-877-338-3398 or 311.

Get Help - ShelterSafe

Call your local shelter if you're in crisis or to learn more about the services they offer. There are over 600 shelters across Canada that are more than ready to support you or answer any questions you have. Click on the map below to start searching.

Find a Family Violence Shelter - MAWS

Manitoba shelters provide a variety of services for individuals and families suffering from abuse. Each shelter is unique in the work they do but generally each include additional programming and support.

Shelters - City of Toronto

Shelters provide temporary accommodation and related support services that assist people to move into housing. All locations are staffed 24 hours a day, seven days a week, and provide ...

Housing + Shelter - The Salvation Army

Salvation Army safe houses provide a restorative environment where survivors of human trafficking, exploitation, and domestic abuse bridge a life of fear and instability to one of safety ...

Ontario - ShelterSafe

Ontario To find a shelter, type a location or address into the search bar or use the map and mouse controls to zoom in. If you know the name of the shelter/transition house you're looking ...

Peel Family Shelter (PFS) - Services and Housing In the Province

It is owned and operated by the Region of Peel with SHIP providing the on-site services. The program provides emergency housing and housing support services to families in the Region ...

Alberta's homelessness response | Alberta.ca

Emergency shelters are always open, ready to help anyone every day. They provide 24/7 emergency accommodation and a safe place to stay when you do not have a permanent ...

Housing & Shelter - City of Toronto

Learn more about emergency shelters, 24-hour respite sites, drop-ins and housing help. Explore City-run long-term care homes with 24/7 care, safety measures, and inclusive services. Find ...

Home - ShelterSafe

If you or someone you know needs help or wants to speak to a shelter worker, you can find your closest women's shelter and their crisis line on this website, sheltersafe.local. Remember that ...

Homeless Help - City of Toronto

Shelters provide temporary accommodation and related support services that assist people to move into housing. To access a shelter call Central Intake: 416-338-4766, 1-877-338-3398 or ...

Get Help - ShelterSafe

Call your local shelter if you're in crisis or to learn more about the services they offer. There are over 600 shelters across Canada that are more than ready to support you or answer any ...

Find a Family Violence Shelter - MAWS

Manitoba shelters provide a variety of services for individuals and families suffering from abuse. Each shelter is unique in the work they do but generally each include additional programming ...

Dive into the thrilling world of "Shelter: Mickey Bolitar 1" by Harlan Coben. Unravel secrets and mysteries in this gripping tale. Discover how it captivates readers!

[Back to Home](#)