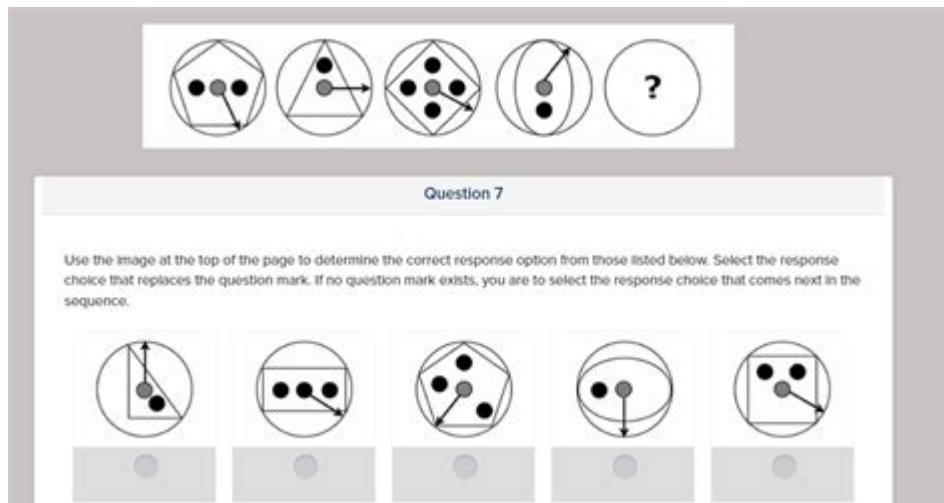


Shl Test Answers



SHL test answers are a crucial aspect for job seekers preparing for psychometric assessments, particularly those administered by SHL, a well-known provider of psychometric testing services. These tests are designed to evaluate various skills and aptitudes, ranging from numerical and verbal reasoning to logical reasoning and personality traits. Understanding how to approach these tests and what to expect can significantly improve a candidate's chances of success. This article will explore the nuances of SHL tests, provide tips for preparation, and discuss the importance of ethical considerations regarding test answers.

Understanding SHL Tests

SHL tests are used globally by employers to identify the best candidates for specific roles. These assessments are standardized and can measure a wide range of competencies, including:

- **Cognitive Abilities:** Tests that assess logical reasoning, numerical skills, and verbal reasoning.
- **Personality Assessments:** Evaluating behavioral traits and characteristics relevant to job performance.
- **Situational Judgement Tests (SJTs):** Measuring decision-making and problem-solving skills in hypothetical situations.

Types of SHL Tests

1. **Verbal Reasoning Tests:** These tests measure the ability to understand and analyze written information. Candidates may be required to read passages and answer questions based on the content.

2. Numerical Reasoning Tests: These assessments evaluate a candidate's numerical skills, including the ability to interpret graphs, charts, and tables.
3. Logical Reasoning Tests: These tests assess deductive and inductive reasoning skills, requiring candidates to recognize patterns and make logical inferences.
4. Personality Tests: These assessments provide insight into a candidate's work-related personality traits, helping employers determine cultural fit.
5. Situational Judgement Tests: Candidates face scenarios they might encounter in the workplace and must choose the most appropriate response.

Preparing for SHL Tests

Effective preparation is key to performing well on SHL tests. Here are several strategies that candidates can implement:

1. Familiarize Yourself with the Test Format

Understanding the structure of the test is essential. Candidates should:

- Review sample questions available on the SHL website or other reputable resources.
- Take practice tests to get accustomed to the timing and types of questions asked.
- Familiarize themselves with the scoring system and the importance of each section.

2. Develop Core Skills

Since SHL tests measure specific skills, candidates should work on improving their core competencies:

- Numerical Skills: Practice basic math, statistics, and data interpretation. Use online resources or workbooks focused on numerical reasoning.
- Verbal Skills: Read newspapers, articles, and books to enhance comprehension and analytical skills. Engage in exercises that involve summarizing information.
- Logical Skills: Solve puzzles and engage in logical reasoning games to improve pattern recognition and logical thinking.

3. Practice Under Test Conditions

Candidates should simulate test conditions by:

- Timing themselves while taking practice tests.
- Minimizing distractions to replicate a real testing environment.
- Reviewing incorrect answers to understand mistakes and learn from them.

4. Manage Test Anxiety

Test anxiety can hinder performance, so candidates should:

- Practice relaxation techniques, such as deep breathing or meditation.
- Ensure they get adequate rest before the test day.
- Approach the test with a positive mindset, focusing on doing their best rather than achieving perfection.

Common Myths About SHL Tests

There are several misconceptions surrounding SHL tests that candidates should be aware of:

1. "I Can Cheat on the Test"

Many candidates believe that finding SHL test answers online can provide an advantage. However, this approach is unethical and can lead to:

- Test disqualification.
- A negative impact on one's professional reputation.
- The risk of being matched with a role that does not fit one's actual skills.

2. "Only High Scores Matter"

While high scores can enhance a candidate's profile, employers often consider multiple factors, including:

- Relevant work experience.
- Cultural fit within the organization.
- Personal attributes that align with job requirements.

3. "Preparation is Useless"

Many candidates underestimate the value of preparation. In reality, preparation can lead to:

- Increased confidence.
- Improved scores.
- A better understanding of one's strengths and weaknesses.

The Importance of Ethical Considerations

Maintaining integrity during the testing process is vital for several reasons:

1. **Fairness:** Cheating undermines the fairness of the recruitment process and disadvantages honest candidates.
2. **Self-Assessment:** SHL tests are valuable tools for self-assessment. They can help individuals identify their strengths and areas for development.
3. **Long-Term Impact:** Misrepresenting abilities can lead to job mismatches, resulting in job dissatisfaction and decreased performance.

Taking the Test

On the day of the test, candidates should ensure they are well-prepared by following these guidelines:

1. Arrive Early

Being punctual reduces stress and provides time to settle in before the test begins.

2. Read Instructions Carefully

Candidates should take the time to read all instructions thoroughly to avoid misunderstanding the requirements.

3. Pace Yourself

Time management is crucial in SHL tests. Candidates should:

- Allocate time for each question.
- Move on if stuck, returning to difficult questions if time permits.

4. Review Responses if Time Allows

If there is time remaining, candidates should review their answers to catch any mistakes or misinterpretations.

Conclusion

In conclusion, understanding SHL tests and preparing effectively can significantly impact a candidate's success in the job application process. While the temptation to seek out specific SHL test answers may be high, maintaining ethical standards is paramount. By focusing on preparation, familiarizing oneself with test formats, and honing relevant skills, candidates can approach these assessments with confidence and integrity. Ultimately, the goal is to find a role that aligns with one's true abilities and aspirations, leading to long-term satisfaction and success in the workplace.

Frequently Asked Questions

What is an SHL test?

An SHL test is a psychometric assessment used by employers to evaluate candidates' abilities and suitability for a job role. It typically includes cognitive ability tests, personality assessments, and situational judgment tests.

How can I prepare for an SHL test?

To prepare for an SHL test, practice sample questions, familiarize yourself with the test format, improve your time management skills, and ensure you get plenty of rest before the test day.

Are SHL test answers strictly evaluated?

Yes, SHL test answers are evaluated based on a standardized scoring system. It is important to provide your honest answers, as the tests are designed to assess your natural abilities and fit for the role.

What types of questions can I expect in an SHL test?

In an SHL test, you can expect various types of questions including numerical reasoning, verbal reasoning, logical reasoning, and situational judgment scenarios that assess your decision-making skills.

Can I find SHL test answers online?

While you may find practice questions and resources online, sharing actual SHL test answers is discouraged and unethical. It's best to focus on understanding the test format and improving your skills through practice.

Find other PDF article:

<https://soc.up.edu.ph/67-blur/Book?dataid=JwH23-9712&title=workkeys-practice-test-math.pdf>

Shl Test Answers

eForms | The #1 website for free legal forms and documents.

The #1 website for free legal forms and documents.

Free Last Will and Testament (Will) - PDF | Word - eForms

Jul 19, 2025 · A last will and testament, or will, is a legal document outlining how an individual (testator) wants to transfer their assets after death. It also appoints who will manage the estate ...

Free IRS Form W9 (2025) - PDF - eForms

Jul 20, 2025 · An IRS form W-9, or "Request for Taxpayer Identification Number and Certification," is a document used to obtain the legal name and tax identification number (TIN) ...

Mississippi Last Will and Testament - Word - eForms

Apr 2, 2025 · A Mississippi last will and testament is a legally binding document an individual uses to direct the distribution of their personal and real property, fiduciary accounts, and/or any cash ...

Free Power of Attorney Forms (12 Types) - PDF | Word - eForms

Jul 18, 2025 · A power of attorney (POA) form is a legal document that allows someone (agent) to make decisions and manage affairs on behalf of another person (principal).[1] The agent can ...

Free Bill of Sale Forms (24) - PDF | Word - eForms

6 days ago · A bill of sale is a legal document that outlines the purchase of property between a buyer and seller. It commonly includes both parties' information, a description of the property, ...

Motor Vehicle (DMV) Bill of Sale Form - Word - eForms

Nov 1, 2024 · A motor vehicle bill of sale is between a buyer and a seller of a car, truck, or motorcycle. It is signed as the last step in the sales process after both parties have received ...

Free Illinois Last Will and Testament Template - PDF - eForms

Feb 14, 2025 · An Illinois last will and testament is a legal document used by an individual

("testator") to indicate how their estate should be distributed upon death. A testator can draft a ...

FAQ (Frequently Asked Questions) - eForms

All of our eForms are fillable through intuitive software that allows customers to create individualized forms by answering a series of questions. Once all entries are filled, our ...

All Documents - eForms

A Alcoholics Anonymous (AA) Sign-in/Attendance Sheet Template Advance Directive Adverse Action Notices Assignment Agreements Affidavit (General) Affidavit of Character Affidavit of ...

Space Shuttle program - National Air and Space Museum

Sep 6, 2023 · The Space Shuttle program ran from presidential approval in 1972 to its end in 2011. It was the fourth human spaceflight program carried out by the United States and NASA. The ...

Space Shuttle Discovery - National Air and Space Museum

Space Shuttle Discovery Discovery is an example of a Space Shuttle orbiter, a component of NASA's Space Transportation System (STS). The STS consisted of a combination of a Space ...

Space Shuttle Discovery - National Air and Space Museum

The Space Shuttle Discovery is a reusable spacecraft that carried astronauts into space and is now displayed at the National Air and Space Museum.

Space Shuttle Discovery - National Air and Space Museum

Discovery was the third Space Shuttle orbiter vehicle to fly in space. It entered service in 1984 and retired from spaceflight as the oldest and most utilized orbiter. Discovery was flown on 39 Earth ...

Move Space Shuttle Discovery to Texas

May 1, 2025 · Move Space Shuttle Discovery to TexasThat is 14+ years to late in my opinion. I would instead propose a display that would replicate the one at Kennedy Space Center with two ...

AVIC Cargo shuttle "Haolong"

Oct 30, 2024 · The Haolong space cargo shuttle, developed by the Chengdu Aircraft Design and Research Institute under the state-owned Aviation Industry Corporation of China (AVIC), was ...

The Legacy of Space Shuttle Flight Software - NASASpaceFlight.com

Oct 17, 2014 · With the computers in control of virtually all critical space shuttle functions, software changes were often considered as a solution to address risks and problems with the hardware ...

History of Space Shuttle Rendezvous - NASASpaceFlight.com

Dec 22, 2011 · History of Space Shuttle RendezvousSpace Shuttle Guidance, Navigation, and Rendezvous Knowledge Capture Reports JSC-66136 Revision 1 - October 2011 This document is ...

What happened to the Space Shuttle Bike that OCC built?

Jan 8, 2009 · Caught an old episode of when Orange County Choppers built the Space Shuttle Tribute bike back in 2005. I was wondering whatever happened to it? Is it on display somewhere?

Space Shuttle Launch Pad 39A with Challenger STS-6 (1:144)

Nov 13, 2018 · To the prehistory: After conclusion the NASA Shuttle program last summer with the last Atlantis-Mission (STS-135), I dedicate my first real space modeling project to the beginning ...

Unlock the secrets to SHL test answers! Explore effective strategies and tips to boost your performance. Discover how to prepare and succeed today!

[Back to Home](#)