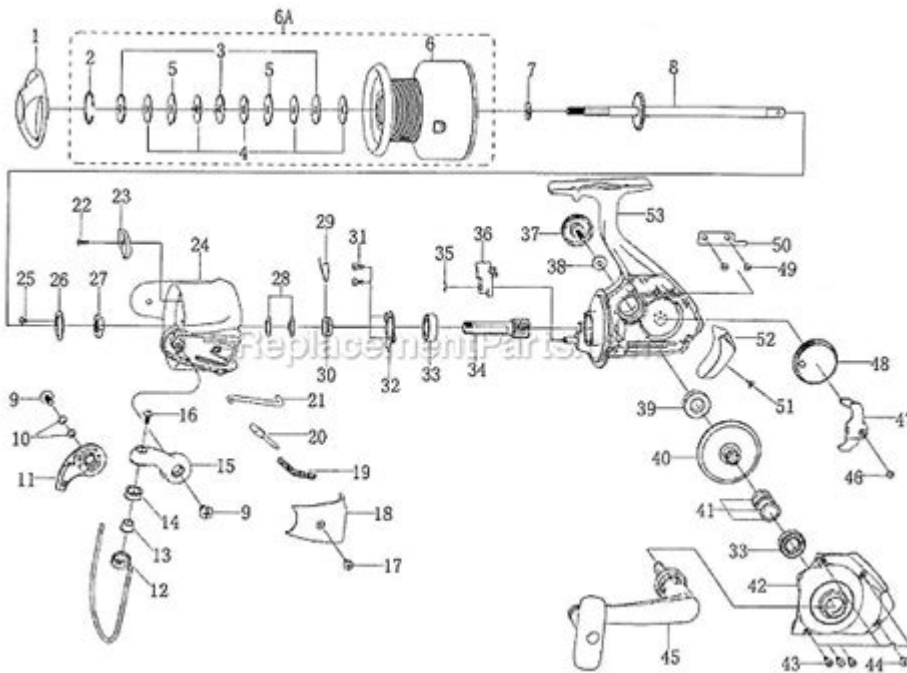


# Shakespeare Fishing Reel Repair Manual



**Shakespeare fishing reel repair manual** is an essential resource for anglers who want to maintain and repair their Shakespeare fishing reels. Shakespeare has a long-standing reputation for producing high-quality fishing gear, and their reels are no exception. However, even the best equipment can experience wear and tear over time. This article will guide you through the process of repairing Shakespeare fishing reels, covering common issues, tools required, and step-by-step repair instructions.

## Understanding Shakespeare Fishing Reels

Before diving into repairs, it's crucial to understand the different types of Shakespeare fishing reels available. Shakespeare offers various models, including spinning reels, baitcasting reels, and spincast reels. Each type has its unique design and functionality, which may require specific repair techniques. Familiarizing yourself with the components of your reel will aid in the repair process.

## Common Issues with Shakespeare Fishing Reels

Over time, Shakespeare fishing reels may encounter several issues that necessitate repair. Some common problems include:

- **Drag Problems:** Difficulty in adjusting the drag or a drag that slips can impact your fishing

experience.

- **Line Twist:** Excessive line twist can lead to tangles and reduced casting performance.
- **Reel Noise:** Unusual noises during operation can indicate bearing wear or insufficient lubrication.
- **Handle Issues:** A loose or broken handle can make it difficult to reel in catches.
- **Corrosion:** Exposure to saltwater or moisture can lead to corrosion, affecting the reel's functionality.

## Essential Tools for Reel Repair

Before starting any repair work, gather the necessary tools. Having the right equipment will make the process smoother and more efficient. Here is a list of essential tools for repairing Shakespeare fishing reels:

1. **Screwdrivers:** Both flathead and Phillips screwdrivers in various sizes.
2. **Pliers:** Needle-nose pliers for gripping small components.
3. **Wrenches:** Adjustable wrenches for loosening and tightening nuts.
4. **Lubricants:** Reel-specific grease and oil for maintaining smooth operation.
5. **Cleaning Supplies:** Soft cloths, brushes, and mild soap for cleaning the reel.
6. **Replacement Parts:** Spare parts specific to your Shakespeare reel model.

## Step-by-Step Repair Instructions

Now that you have your tools ready and understand the common issues, you can proceed with the repair. Below are step-by-step instructions for addressing some of the most common problems encountered with Shakespeare fishing reels.

# 1. Fixing Drag Problems

If you find that your reel's drag is slipping or difficult to adjust, follow these steps:

## 1. Disassemble the Reel:

- Remove the handle by unscrewing it.
- Take off the side plate to access the drag system.

## 2. Inspect the Drag Washers:

- Examine the drag washers for wear or damage.
- Clean them with a mild soap solution and dry them thoroughly.

## 3. Lubricate Drag Components:

- Apply a light coat of reel grease to the drag washers.
- Reassemble the drag system, ensuring all parts fit snugly.

## 4. Reassemble the Reel:

- Put the side plate back on and reattach the handle.
- Test the drag by pulling on the line to ensure it functions smoothly.

# 2. Resolving Line Twist

Line twist can be frustrating and affect your fishing experience. Here's how to tackle this issue:

## 1. Remove the Line:

- Take off the spool and remove the line.

## 2. Inspect the Spool:

- Check for any misalignment or damage on the spool.
- If necessary, clean the spool with a soft cloth.

## 3. Re-spool the Line:

- When re-spooling, ensure the line comes off the spool in the correct direction.
- Use a line spooler if available to avoid twists.

## 4. Test the Reel:

- Make a few casts to ensure the line flows smoothly from the reel.

### 3. Addressing Reel Noise

If your reel is making unusual noises, it may require lubrication or bearing replacement:

1. Disassemble the Reel:

- Open the side plate to access the gears and bearings.

2. Clean Components:

- Use a soft brush to remove dirt and debris from gears and bearings.

3. Lubricate:

- Apply a small amount of oil to the bearings and grease to the gears.
- Avoid over-lubricating, as it can attract dirt.

4. Reassemble and Test:

- Put the reel back together and test it by reeling in line.

### 4. Repairing the Handle

A loose or broken handle can significantly impact usability. Here's how to fix it:

1. Check for Loose Screws:

- Tighten any loose screws with your screwdriver.

2. Inspect for Damage:

- If the handle is broken, you may need a replacement part.
- Consult your Shakespeare fishing reel repair manual or manufacturer for compatible parts.

3. Replace the Handle:

- If replacing, remove the old handle and attach the new one securely.

4. Test the Handle:

- Ensure the handle operates smoothly without any resistance.

### 5. Treating Corrosion

Corrosion can be a significant problem, especially for reels used in saltwater:

1. Disassemble the Reel:

- Open the reel to expose all internal parts.

## 2. Clean Corroded Areas:

- Use a soft brush and mild soap to clean corroded parts.
- For stubborn corrosion, consider using a mixture of vinegar and water.

## 3. Dry Thoroughly:

- Make sure all parts are completely dry before reassembly.

## 4. Apply Protective Coating:

- Consider using a corrosion-resistant spray on exposed metal parts before reassembling.

## 5. Reassemble and Test:

- Reassemble the reel and check its functionality.

# Conclusion

A **Shakespeare fishing reel repair manual** is an invaluable tool for any angler looking to maintain and repair their fishing gear. By understanding common issues and following a systematic approach to repairs, you can ensure your reel remains in top condition for years to come. Regular maintenance will not only enhance performance but also prolong the life of your cherished fishing equipment. Remember that while some repairs can be done at home, don't hesitate to consult a professional if you encounter complex issues beyond your expertise. Happy fishing!

# Frequently Asked Questions

## What are the common issues faced with Shakespeare fishing reels that require repair?

Common issues include dragging problems, line tangling, broken gears, and worn bearings.

## Where can I find the Shakespeare fishing reel repair manual?

The repair manual can often be found on the Shakespeare website, in fishing forums, or through online retailers that specialize in fishing gear.

## Is the Shakespeare fishing reel repair manual available in digital format?

Yes, many repair manuals are available as downloadable PDFs on various fishing and sporting goods websites.

## **What tools are typically needed for Shakespeare fishing reel repairs?**

Common tools include screwdrivers, pliers, a fishing reel grease, and sometimes a specialized wrench for specific parts.

## **Can I repair my Shakespeare fishing reel without a manual?**

While it's possible, having a manual can greatly simplify the process and ensure you follow the correct steps.

## **How often should I maintain my Shakespeare fishing reel?**

It is recommended to perform maintenance at least once a year, or more frequently if you fish regularly.

## **What are the steps to clean a Shakespeare fishing reel?**

Steps include disassembling the reel, cleaning all parts with a soft cloth, lubricating the gears, and reassembling carefully.

## **Are there any specific replacement parts I should keep on hand for Shakespeare reels?**

Yes, common replacement parts include drag washers, spool bearings, and anti-reverse mechanisms.

## **How do I troubleshoot a Shakespeare fishing reel that won't cast properly?**

Check for line tangles, ensure the drag is set correctly, and inspect the spool and bail for any damage or misalignment.

## **What is the warranty policy for Shakespeare fishing reels in case of repair needs?**

Shakespeare typically offers a limited warranty that covers manufacturing defects; however, wear and tear from regular use may not be covered.

Find other PDF article:

<https://soc.up.edu.ph/65-proof/pdf?trackid=VYx91-6445&title=wave-method-sleep-training.pdf>

## **Shakespeare Fishing Reel Repair Manual**

$$\square\square \cdot \square\square\square\square - \square\square$$

William Shakespeare 1564-1616 ...

William Shakespeare (1564-1616) *Measure for Measure* ...

May 17, 2025 · William Shakespeare (1564-1616) 100 years after his death ...

to be or not to be -

"To be, or not to be, that is the question:" " " "be..."

William Shakespeare (1564-1616) Henry IV Part 2 Act 1, Scene 1 ...

Nov 21, 2024 · William Shakespeare (1564-1616) 1564-1616 ...

□□□□□□□□□□/□□□□ (Shakespeare Birthplace)

[illegible]

·                 -

·William Shakespeare1564423161642319082

□□□□□□“□□□□”□□□□□□...

## William Shakespeare (1564-1616) Measure for Measure ...

May 17, 2025 · William Shakespeare (西·莎士比亞) 的 作品 列表 包含 1582 個 作品。

□□□□□□1590□□□□□□ ...

to be or not to be -

"To be, or not to be, that is the question:" □□□□□□□□ "□□□□□□□□□□□□" □□ "be..."

**William Shakespeare (1564-1616) Henry IV Part 2 Act 1, Scene 1 ...**

Nov 21, 2024 · William Shakespeare (西·莎士比亞) 的 作品 列表 包含 1582 個 作品 ·

□□□□□□1590□□□□□□ ...

□□□□□□□□□□/□□□□ (Shakespeare ...)

Reason to go 1.

□ □ □ □ □ □ ...

□□Shakespeare is not for an age, but for all times□ - □□

□□Shakespeare is not for an age, but for all times□

18 -

18 What is the theme of the Sonnet 18, by William Shakespeare?

Brave new world ...

→ Shakespeare's Words | Search | William Shakespeare

[illegible]

#000 | *Stick to the end* 0000 - 00

Apr 12, 2023 · But with the word the time will bring on summer, When briers shall have leaves as well as thorns, And be as sweet as sharp. —All's Well That Ends Well, Playwright, William ...

**BBC**

Dec 31, 1978 · BBC 1978

Diagram illustrating a sequence of elements, represented by a row of boxes followed by an ellipsis ( $\dots$ ).

"Unlock the secrets of your Shakespeare fishing reel with our comprehensive repair manual. Discover how to troubleshoot and maintain your reel like a pro. Learn more!"

[Back to Home](#)