

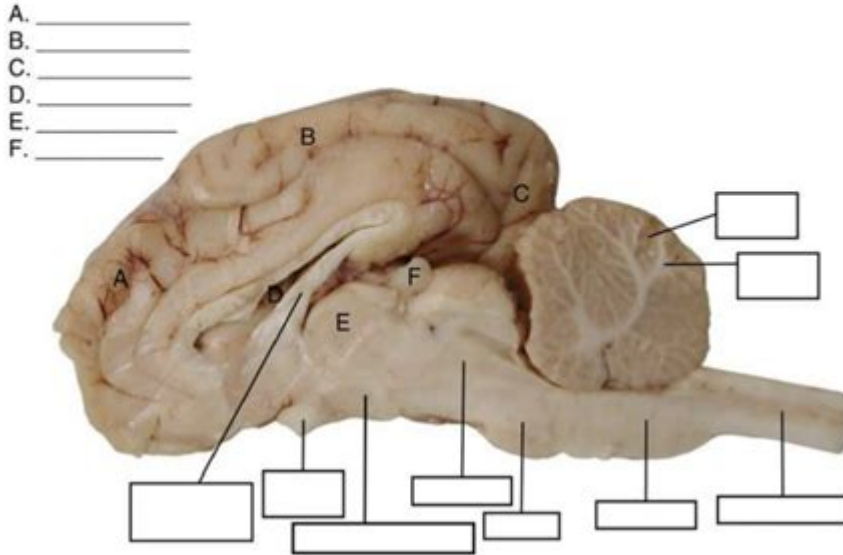
Sheep Brain Labeling Worksheet Answers

Sheep brain dissection worksheet

Identify and label as many as possible:

A-F: thalamus; pineal gland; frontal lobe; occipital lobe; parietal lobe; lateral ventricle

Fill in the boxes: optic chiasm; midbrain; pons; medulla; hypothalamus; corpus callosum; spinal cord.



Sheep brain labeling worksheet answers are essential for students and anyone interested in understanding the anatomy of the brain. Sheep brains are commonly used in educational settings due to their similarities to human brains, making them an excellent model for anatomical studies. In this article, we will delve into the anatomy of the sheep brain, discuss the importance of labeling worksheets, and provide a comprehensive overview of the answers typically found in these worksheets.

Understanding the Sheep Brain

The sheep brain is a fascinating organ, closely resembling the human brain in structure and function. It offers an insightful look into the workings of the central nervous system. By studying the sheep brain, students can gain a better understanding of the following:

- Basic brain anatomy and functions
- Neural pathways and connections
- Differences and similarities between sheep and human brains

The sheep brain is often used in biology and anatomy classes as it is both affordable and accessible. Moreover, it allows students to engage in hands-on learning, which is crucial for retaining complex information.

Importance of Labeling Worksheets

Labeling worksheets serve several educational purposes:

- **Reinforcement of Learning:** By labeling different parts of the sheep brain, students reinforce their knowledge and understanding of brain anatomy.
- **Visual Aid:** Worksheets provide a visual representation of the brain, making it easier to associate names with structures.
- **Assessment Tool:** Teachers can use these worksheets to assess student understanding and retention of the material.

These worksheets typically include diagrams of the sheep brain with blank labels for students to fill in, encouraging active participation in the learning process.

Anatomy of the Sheep Brain

To effectively use sheep brain labeling worksheets, it is crucial to understand the key structures of the sheep brain. Below is a list of the primary parts of the sheep brain that students will encounter:

1. **Cerebrum:** The largest part of the brain, responsible for higher brain functions such as thought and action.
2. **Cerebellum:** Located at the back of the brain, it plays a vital role in coordinating movement and balance.
3. **Brain Stem:** Comprising the midbrain, pons, and medulla oblongata, it controls basic life functions such as breathing and heart rate.
4. **Thalamus:** Acts as a relay station for sensory information, directing it to the appropriate areas of the brain.
5. **Hypothalamus:** Responsible for regulating various autonomic functions, including temperature control, hunger, and sleep cycles.
6. **Corpus Callosum:** A thick band of nerve fibers that connects the two hemispheres of the brain, facilitating communication between them.
7. **Lateral Ventricles:** Cavities filled with cerebrospinal fluid that help cushion the brain and maintain its shape.

Detailed Structure Overview

Understanding the specific functions of these structures enhances the

learning experience. Here's a more detailed overview of each part:

1. Cerebrum
 - Divided into two hemispheres: left and right.
 - Responsible for cognitive functions, voluntary muscle movements, and sensory processing.
2. Cerebellum
 - Contains more neurons than the rest of the brain combined.
 - Critical in motor control, coordination, and timing of movements.
3. Brain Stem
 - The midbrain connects the cerebellum to the cerebrum.
 - The pons aids in regulating sleep and arousal.
 - The medulla oblongata controls vital involuntary functions such as heartbeat and blood pressure.
4. Thalamus
 - Acts as the brain's sensory switchboard, directing incoming sensory data to the correct cortical areas.
5. Hypothalamus
 - Plays a crucial role in maintaining homeostasis.
 - Regulates the pituitary gland, influencing growth, metabolism, and stress responses.
6. Corpus Callosum
 - This structure is essential for inter-hemispheric communication, allowing for synchronization of activities between the left and right sides of the brain.
7. Lateral Ventricles
 - These structures are important for the production and circulation of cerebrospinal fluid, which protects the brain from injury.

Common Worksheet Answers

While each sheep brain labeling worksheet may vary slightly, most include the same fundamental structures. Below are the typical answers corresponding to a labeled diagram of a sheep brain:

- 1. Cerebrum
- 2. Cerebellum
- 3. Brain Stem
- 4. Thalamus
- 5. Hypothalamus
- 6. Corpus Callosum
- 7. Lateral Ventricles

Each label should be placed in the appropriate location on the diagram, allowing students to visualize where each structure is situated within the brain.

Practical Tips for Using Worksheets

To maximize the effectiveness of sheep brain labeling worksheets, consider the following tips:

1. **Take Your Time:** Don't rush through labeling. Spend time observing each structure carefully before placing your labels.
2. **Use Multiple Resources:** Reference textbooks, online resources, and videos to deepen your understanding of each part.
3. **Collaborate with Peers:** Working in groups can enhance comprehension as you discuss and share insights.
4. **Ask Questions:** If unsure about a label or function, ask your teacher or peers for clarification.

Conclusion

Understanding the **sheep brain labeling worksheet answers** is a valuable part of learning about brain anatomy. By engaging with these worksheets, students can gain a deeper appreciation for the complexities of the brain and its functions. The hands-on experience of labeling the sheep brain not only reinforces theoretical knowledge but also stimulates curiosity about the human brain's workings. As educational tools, these worksheets are indispensable for anyone pursuing studies in biology, neuroscience, or related fields.

Frequently Asked Questions

What is the purpose of a sheep brain labeling worksheet?

The purpose of a sheep brain labeling worksheet is to help students learn and identify the different parts of the sheep brain, understand its anatomy, and gain insights into its functions through hands-on dissection.

Where can I find reliable answers for a sheep brain labeling worksheet?

Reliable answers for a sheep brain labeling worksheet can typically be found in biology textbooks, educational websites, or reputable online resources dedicated to anatomy and physiology.

What are the main parts of the sheep brain that are commonly labeled in worksheets?

The main parts of the sheep brain commonly labeled in worksheets include the cerebrum, cerebellum, brainstem, thalamus, and hippocampus, among others.

How can I effectively study the anatomy of the sheep brain using a labeling worksheet?

To effectively study the anatomy of the sheep brain, use the labeling worksheet as a guide while performing a dissection, take notes on each labeled part, and utilize diagrams and models for visual reinforcement.

Are there online resources that provide interactive sheep brain labeling activities?

Yes, there are several online resources and educational platforms that offer interactive sheep brain labeling activities, including virtual dissections and quizzes that enhance learning and retention of brain anatomy.

Find other PDF article:

<https://soc.up.edu.ph/02-word/Book?dataid=Wua79-3113&title=5th-grade-math-division-problems.pdf>

[Sheep Brain Labeling Worksheet Answers](#)

Arts & Crafts, Frames, Seasonal Décor | DIY & Inspiration | Michaels

Shop Michaels arts and crafts store for art supplies, crafts, framing, floral, home décor & seasonal products. Michaels is your go-to for creative inspiration and DIY projects.

Michaels Arts and Crafts Store | 2768 Aurora Ave, Naperville

Michaels arts and crafts stores offer a wide selection that's sure to cover your creative needs. Find inspiration at our craft store in Naperville, IL.

Michael in Naperville, IL - Hours & Locations - Chamber of ...

Michaels at The Waterside Center, 2768 Aurora Ave, Naperville, IL 60540. Get Michaels can be contacted at 630-596-0391. Get Michaels reviews, rating, hours, phone number, directions and ...

Michaels - Naperville, IL - Hours & Weekly Ad

Here you'll find some information about Michaels Naperville, IL, including the times, local directions or telephone number.

Michaels Naperville, IL (Hours & Weekly Ad)

View the Michaels store ☐ hours ☐ phone number, address, map and ☐ weekly ad previews for Naperville, IL.

MICHAELS - Updated July 2025 - 59 Photos & 24 Reviews - Yelp

Specialties: Everything to Create Anything. Our expansive craft assortments include the most popular art supplies, fabric, canvases, yarn, knitting & crochet supplies, frames, floral, ...

Michaels - The Arts & Crafts Store - Naperville, IL 60540

Get reviews, hours, directions, coupons and more for Michaels - The Arts & Crafts Store. Search for other Art Supplies on The Real Yellow Pages®.

Arts and Crafts Stores in Naperville, Illinois (IL) | Michaels

Michaels arts and crafts stores offer a wide selection that's sure to cover your creative needs. Find inspiration at a Naperville, Illinois craft store near you.

Store Locator | Michaels

Find the Michaels store closest to you through the Michaels Store Locator.

Michaels - Naperville, IL 60540 - (630)596-0391 | ShowMeLocal.com

Owner verified. Get coupons, hours, photos, videos, directions for Michaels at 2768 Aurora Ave 2768 Aurora Ave The Waterside Center, Naperville, IL 60540 Naperville IL. Search other Craft ...

MLB Predictions, Expert Picks, and Previews For Each Game

1 day ago · Get your free expert picks and predictions for each MLB game, the latest hot picks, and learn what the Winners and Whiners team is betting.

MLB Picks and Predictions For Each Game

1 day ago · Free MLB picks and predictions are available each day of the regular season, postseason and World Series. We have a staff of talented MLB writers who have followed the ...

MLB Predictions and Odds | Sports Chat Place

Jul 1, 2025 · Free MLB Picks and daily picks runline and over/under for each game during the 2023 MLB season (and up-to-the-minute MLB standings!) from expert handicappers.

Free MLB Picks - Expert MLB Picks Today | Pickswise

Get free MLB picks from the experts at Pickswise including MLB run line picks, Totals Picks, & Money Line Picks for today's MLB games.

MLB Expert Picks - CBSSports.com

CBSSports.com's MLB picks provides daily picks runline and over/under for each game during the season.

Free MLB Picks - Expert Baseball Predictions | Odds Shark

17 hours ago · Want free MLB picks? Odds Shark provides expert MLB predictions on MLB games today, including runlines, moneylines and run totals for the 2025 season.

MLB Picks: Parlays, Expert Predictions, Best Bets and Player Props.

1 day ago · Today's MLB picks, Parlays, Best Bets and Player Props updated daily as well as predictions for all of today's games written by our experts.

Free MLB Picks & Predictions - Today's Best Expert MLB Bets

1 day ago · Get free expert and computer MLB picks for every game on July 28, 2025. With over 25 years of betting experience, our analysts and predictive models help you find the best value.

MLB Picks - Best MLB Bets and Computer Picks Today

Get the best MLB picks for today's games, including computer picks for moneylines, run lines and totals. We help bettors make smart picks for the 2025 season.

Free MLB Picks & Expert MLB Predictions | The Action Network

1 day ago · Get the best free MLB picks and expert MLB predictions against the spread and point totals for today's games.

Unlock your understanding of sheep brain anatomy with our comprehensive labeling worksheet answers. Learn more and enhance your study experience today!

[Back to Home](#)