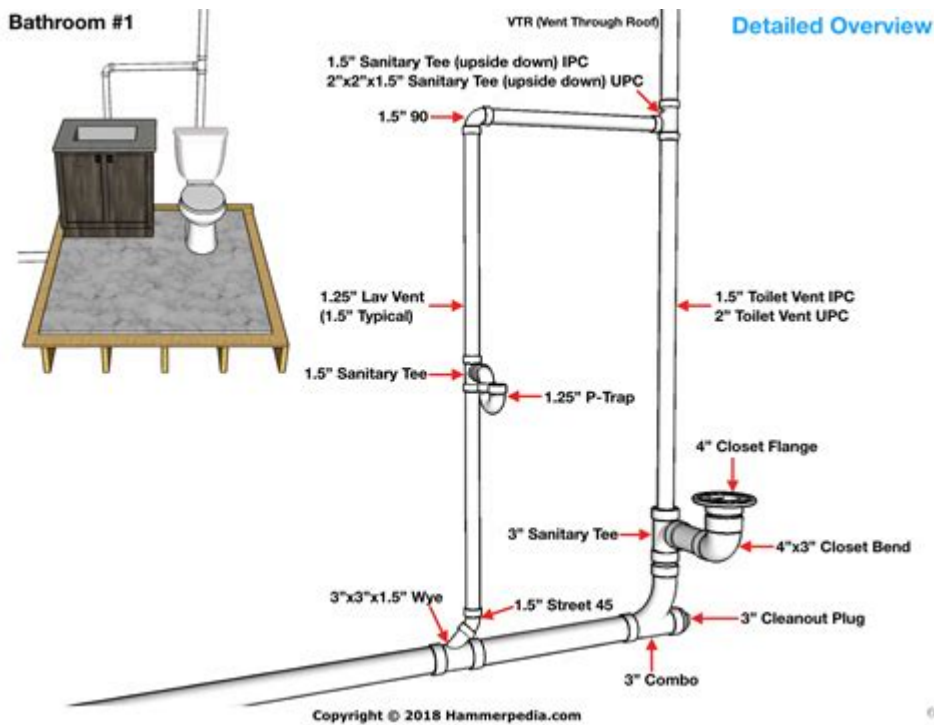


Shower Drain Pipe Diagram



Shower drain pipe diagram is an essential component of any bathroom plumbing system. Understanding the layout and function of the shower drain pipe can help homeowners troubleshoot issues, plan renovations, or even perform DIY repairs. In this article, we will explore the anatomy of a shower drain, its components, installation procedures, and common problems associated with shower drain systems. By the end, readers will have a comprehensive understanding of how shower drain systems work and how to maintain them effectively.

Understanding the Shower Drain System

The shower drain system is designed to carry wastewater from the shower area to the home's main drainage system. Proper installation is crucial for preventing leaks, clogs, and water damage.

Components of a Shower Drain System

A typical shower drain system consists of several key components:

1. **Shower Drain Assembly:** This is the visible part located at the base of the shower. It includes the drain cover or grate, which prevents large debris from entering the pipes.
2. **Drain Pipe:** This pipe connects the shower drain assembly to the home's plumbing system. It usually has a diameter of 1.5 inches to 2 inches.
3. **P-Trap:** This curved section of pipe is essential for preventing sewer gases from entering the

bathroom. It holds a small amount of water, which acts as a barrier.

4. Vent Pipe: This pipe allows air into the drainage system to prevent vacuum formation, ensuring that water flows smoothly.

5. Main Drain Line: This is the larger pipe that connects to the city sewer or septic system.

Diagram of Shower Drain Pipe System

Visualizing the setup can be helpful. Though we cannot provide images, a shower drain pipe diagram typically illustrates the following:

- The locations of the shower drain assembly, P-trap, and vent pipe.
- The route the drain pipe takes from the shower to the main drain line.
- The relationship between the various components and how they connect.

Understanding the Diagram

Each component plays a vital role:

- Shower Drain Assembly: The starting point where water exits the shower.
- Drain Pipe: A downhill slope is essential for proper drainage, typically sloping at a rate of 1/4 inch per foot.
- P-Trap: Usually located directly beneath the shower, it curves downward and then back up to create the water seal.
- Vent Pipe: Positioned above the trap, it ensures proper air flow and drainage efficiency.

Installation of a Shower Drain System

Installing a shower drain system involves several critical steps. Here's a breakdown of the process:

Materials Needed

Before beginning the installation, gather the following materials:

- Shower drain assembly
- PVC or ABS drain pipe
- P-Trap
- Vent pipe
- Pipe fittings and connectors
- Pipe cement or adhesive
- Teflon tape
- Tools (saw, wrench, drill, measuring tape)

Step-by-Step Installation

1. Prepare the Area: Remove any existing flooring or tiles to expose the subfloor. Ensure that the area is clean and free of debris.
2. Determine Drain Location: Identify where the shower drain will be located. The drain should be centrally positioned to ensure proper water flow.
3. Cut the Drain Hole: Use a hole saw or jigsaw to cut a hole in the subfloor for the drain assembly.
4. Install the Shower Drain Assembly: Insert the drain assembly into the hole and secure it in place according to the manufacturer's instructions.
5. Connect the Drain Pipe: Measure and cut the drain pipe to connect the shower drain to the P-trap. Use PVC or ABS cement to secure the connections.
6. Install the P-Trap: Attach the P-trap to the drain pipe. Ensure that it is installed correctly to maintain the necessary water seal.
7. Add the Vent Pipe: If applicable, install the vent pipe to ensure proper airflow in the drainage system. This may involve connecting it to the main vent stack in the house.
8. Check for Leaks: Before sealing the floor, run water through the system to check for leaks. Make adjustments as necessary.
9. Cover and Seal: Once everything is secure and leak-free, cover the drain with a grate, and proceed to install flooring or tiles.

Common Problems with Shower Drain Systems

Understanding potential issues can help in maintaining the shower drain system effectively. Here are some common problems:

Clogs

- Causes: Hair, soap scum, and debris can accumulate over time, leading to slow drainage.
- Solutions: Use a drain snake or a mixture of baking soda and vinegar to clear minor clogs. For severe blockages, professional plumbing services may be necessary.

Leaks

- Causes: Improper installation or worn-out seals can lead to leaks.
- Solutions: Check all connections for tightness. Replace any damaged components and reseal connections with appropriate adhesives.

Odors

- Causes: A dry P-trap can allow sewer gases to escape into the bathroom.
- Solutions: Regularly run water in the shower to keep the P-trap filled. If odors persist, inspect the vent pipe for blockages or leaks.

Maintenance Tips for Shower Drain Systems

Regular maintenance can prolong the life of the shower drain system. Here are some practical tips:

1. Clean the Drain Regularly: Remove hair and debris from the drain cover to prevent clogs.
2. Flush with Hot Water: Occasionally run hot water down the drain to dissolve soap scum and grease buildup.
3. Use Drain Screens: Install a drain screen to catch hair and larger debris before they enter the drain.
4. Inspect the P-Trap: Periodically check the P-trap for signs of leaks or corrosion and replace it if necessary.
5. Check for Proper Venting: Ensure that the vent pipe is open and free of blockages to maintain proper drainage.

Conclusion

A thorough understanding of the shower drain pipe diagram and its components is crucial for effective bathroom plumbing maintenance. Whether you're planning a new installation or addressing common issues, knowing how the system works can save you time and money. By following proper installation techniques and maintenance practices, homeowners can ensure that their shower drain systems function efficiently for years to come.

Frequently Asked Questions

What is a shower drain pipe diagram?

A shower drain pipe diagram is a visual representation that illustrates the layout and connections of the plumbing system related to a shower drain, including the drain, pipes, fittings, and how they connect to the home's drainage system.

Why is it important to understand a shower drain pipe

diagram?

Understanding a shower drain pipe diagram is crucial for proper installation, maintenance, and troubleshooting of the shower drainage system, ensuring efficient water flow and preventing clogs or leaks.

What are the key components typically shown in a shower drain pipe diagram?

Key components often include the shower drain, P-trap, waste pipe, vent pipe, and any connecting fittings or junctions that link to the main drainage system.

How can I create a shower drain pipe diagram for my bathroom?

To create a shower drain pipe diagram, start by measuring the layout of your bathroom, then sketch the position of the shower, drain, and pipes, using arrows to indicate flow direction and labeling each component.

What common issues can be identified using a shower drain pipe diagram?

Common issues that can be identified include improper slope leading to slow drainage, blocked vents causing drainage problems, and misaligned pipes that may lead to leaks.

Are there standard dimensions for shower drain pipes in a diagram?

Yes, standard dimensions for shower drain pipes typically include 2-inch diameter pipes for the drain and 1.5 to 2-inch pipes for the waste line, but it's essential to check local plumbing codes for specific requirements.

What software or tools can I use to create a shower drain pipe diagram?

You can use plumbing design software like AutoCAD, SketchUp, or online diagram tools like Lucidchart or SmartDraw to create detailed shower drain pipe diagrams.

Can I find pre-made shower drain pipe diagrams online?

Yes, many websites offer pre-made shower drain pipe diagrams that can be used as references or templates for various bathroom designs and layouts.

Find other PDF article:

<https://soc.up.edu.ph/29-scan/files?docid=qvw49-1902&title=how-is-manual-communication-different-from-oral-communication.pdf>

Shower Drain Pipe Diagram

bath shower _

May 16, 2008 · bath shower shower ...

take shower take showers take a shower? _

take a shower 1.If you are a member of a gym, perhaps you could take a shower there first. ...

take a shower take a bath -

take a shower take a bath take a bath take a shower bath ...

take the shower take a shower? -

take the shower take a shower 1 take the shower 2 ...

shower sb with sth _

Nov 2, 2023 · shower sb with sth shower sb with sth shower 1 ...

bath shower _

May 16, 2008 · bath shower shower bath [bɑːθ] [bæθ] n. v. ...

take shower take showers take a shower? _

take a shower 1.If you are a member of a gym, perhaps you could take a shower there first. 2.Our suggestion: Insist that everyone take a shower before hitting the pool. And make it a warm one. ...

take a shower take a bath -

take a shower take a bath take a bath take a shower bath shower

take the shower take a shower? -

take the shower take a shower 1 take the shower 2 take a shower 1 take the shower take “” ...

shower sb with sth _

Nov 2, 2023 · shower sb with sth shower sb with sth shower 1 2 3 4 shower sb with sth

take a shower/ to shower - WordReference Forums

Jun 10, 2007 · I would say that to take/have a shower is more common in speech and sounds more idiomatic. (And yes, I say 'have a shower/bath' rather than 'take a shower/bath' too.) There is a tendency in spoken English to represent certain activities as nouns with a generic kind of verb - to have a swim, have a walk, go for a run, have a look.

She is having a shower (Presente continuo) - WordReference Forums

Jan 2, 2013 · Hola, feliz año a todos. Tengo una duda al formar la siguiente oracion en presente

continuo: Mi duda es si seria correcto utilizar is con have en su forma de presente continuo (is having) o no seria correcto. 1. (on the telephone) "Hello. Can I speak to Ann, please?" "She having a shower at the...

Basin - Bidet
Sep 13, 2024 · 1. basin shower toilet bidet
2. cabinet mirror rack drawer

body wash ; shower gel ; shower cream
body wash ; shower gel ; shower cream body wash
shower gel shower cream
...

Take a shower/bath or have a shower/bath? - WordReference ...
Jun 15, 2007 · Hi, I believe I can have or take either a bath or a shower. However, I usually take a shower or have a bath. In the stock market, when I lose money in a stock, I take a bath, not have a bath.

Discover how to understand your plumbing with our detailed shower drain pipe diagram. Get insights and tips for effective drainage solutions. Learn more!

[Back to Home](#)