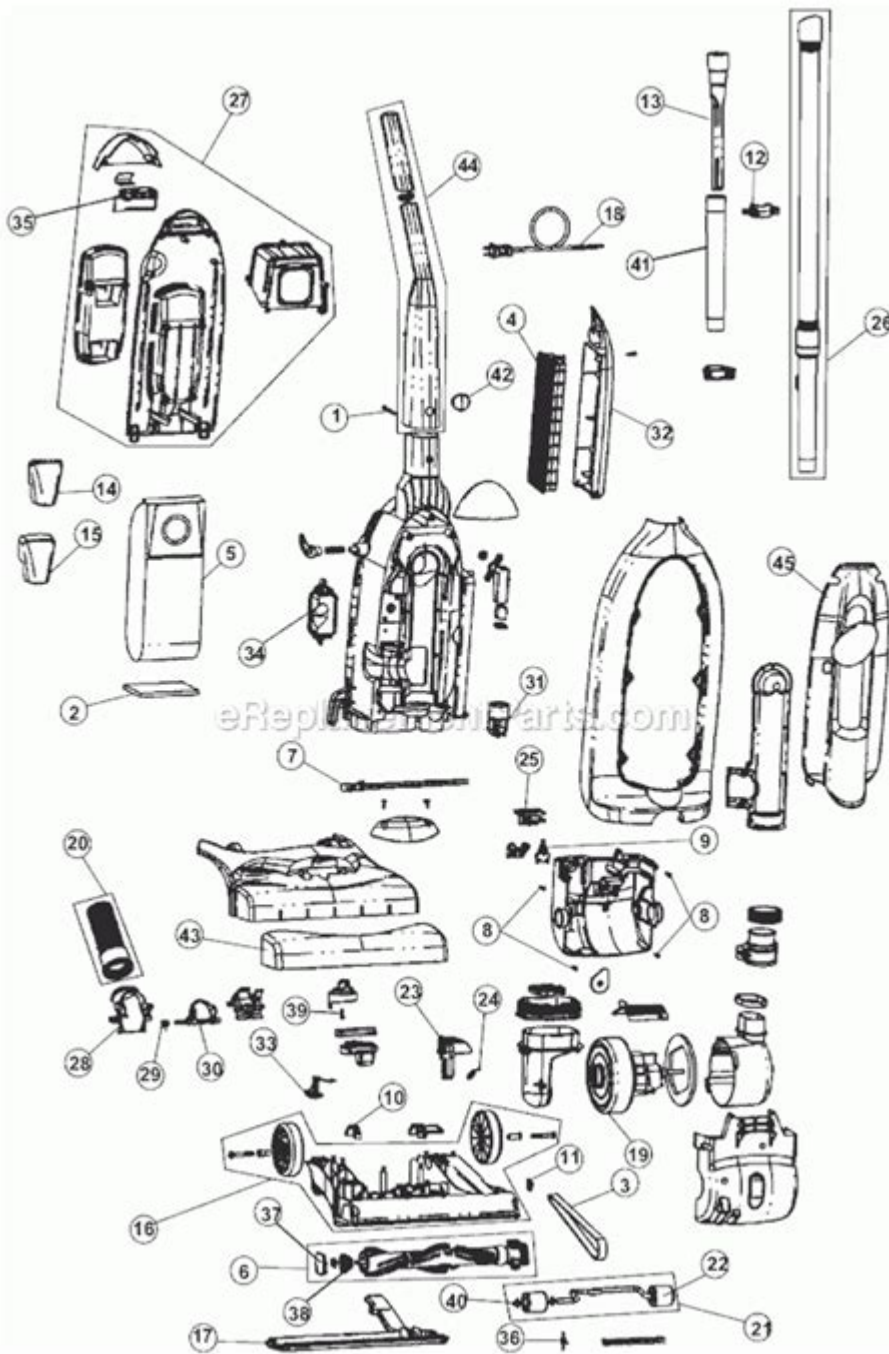


Shark Duoclean Parts Diagram



Shark Duoclean parts diagram is an essential tool for anyone looking to understand the inner workings of their Shark Duoclean vacuum. This innovative cleaning device has gained popularity for its advanced technology, which allows it to pick up dirt and debris effectively from various surfaces. In this article, we will explore the components of the Shark Duoclean vacuum, the significance of each part, and how you can utilize the parts diagram for maintenance and repairs.

Understanding the Shark Duoclean Technology

Shark's Duoclean technology features two brush rolls that work in tandem to ensure a thorough clean on both carpets and hard floors. This unique design not only enhances suction power but also reduces the need for multiple cleaning tools. Understanding the parts of the vacuum is crucial for effective maintenance and troubleshooting.

Key Components of the Shark Duoclean Vacuum

The Shark Duoclean vacuum consists of several essential parts, each playing a vital role in its functionality. Here is a detailed list of the primary components:

- **Motor:** The heart of the vacuum, responsible for generating suction.
- **Brush Rolls:** Two specialized rolls that work together to lift dirt and debris.
- **Dust Cup:** Collects dirt and debris; easy to empty and clean.
- **Filters:** Traps allergens and dust; should be cleaned or replaced regularly.
- **Hose:** Flexible attachment for reaching tight or high spaces.
- **Nozzle:** The part that connects to the brush rolls and helps in directing airflow.
- **Wheels:** Provide mobility and ease of movement across different surfaces.
- **Handle:** Allows for maneuverability and control while vacuuming.
- **Power Cord:** Supplies electricity to the vacuum; the length can dictate your cleaning range.
- **LED Lights:** Illuminate dark areas, helping to spot hidden dirt and debris.

The Importance of the Shark Duoclean Parts Diagram

A well-annotated parts diagram serves as a valuable reference for anyone

using the Shark Duoclean vacuum. It provides a visual representation of each component, making it easier to identify and understand their functions. Here are several reasons why having access to the Shark Duoclean parts diagram is beneficial:

1. Simplifies Maintenance

Regular maintenance is crucial for keeping your vacuum in optimal working condition. The parts diagram allows you to:

- Identify components that require cleaning or replacement.
- Understand how to disassemble and reassemble parts for maintenance.
- Locate filters and brush rolls that need attention.

2. Aids in Repair

If your vacuum is malfunctioning, a parts diagram can help you identify the source of the problem. You can:

- Pinpoint defective components that may need replacement.
- Learn how to access internal parts without damaging the vacuum.
- Enhance your troubleshooting skills by understanding how each part interacts.

3. Enhances Understanding of the Product

For users who want to maximize the performance of their Shark Duoclean vacuum, understanding its components is key. The parts diagram provides:

- Insight into how different parts contribute to cleaning efficiency.
- Knowledge about the technology behind the vacuum's design.
- Clarity on how to properly use attachments and accessories.

How to Use the Shark Duoclean Parts Diagram Effectively

Using the parts diagram efficiently can significantly impact your vacuum maintenance and repair efforts. Here are some steps to make the most of it:

1. Familiarize Yourself with the Diagram

Before diving into maintenance or repairs, take time to study the parts diagram. Identify each component, their locations, and functions. This will help you to:

- Navigate the vacuum easily.
- Recognize parts that may be causing issues.

2. Follow Manufacturer Recommendations

Always refer to the user manual in conjunction with the parts diagram. The manual will provide:

- Specific maintenance schedules for each component.
- Instructions for disassembly and reassembly.
- Safety precautions when handling electrical parts.

3. Keep a Maintenance Log

Tracking your maintenance activities can be incredibly helpful. Maintain a log that includes:

- Dates of cleaning or parts replacement.
- Any issues encountered and how they were resolved.
- Observations about vacuum performance.

Common Parts Replacement for Shark Duoclean Vacuums

Over time, certain components of your Shark Duoclean vacuum may require replacement due to wear and tear. Here are some common parts that often need to be replaced:

- **Filters:** Should be replaced every 6 months to maintain suction power.
- **Brush Rolls:** Check for wear; replace if bristles are frayed or damaged.
- **Hoses:** Inspect for clogs or tears; replace if necessary.
- **Batteries:** For cordless models, batteries may need replacement after a few years.

Conclusion

Understanding the **Shark DuoClean parts diagram** is essential for any user who wants to keep their vacuum performing at its best. By familiarizing yourself with the various components and their functions, you can efficiently maintain and repair your vacuum, ensuring it remains a reliable cleaning tool in your home. Whether you are addressing a minor issue or undertaking routine maintenance, the parts diagram serves as a crucial resource in your cleaning arsenal.

Frequently Asked Questions

What is the purpose of the Shark DuoClean parts diagram?

The Shark DuoClean parts diagram provides a visual representation of the vacuum's components, helping users identify parts for maintenance, repair, or replacement.

Where can I find a Shark DuoClean parts diagram?

You can find the Shark DuoClean parts diagram on the official Shark website, in the user manual, or through authorized retailers and repair service providers.

How do I use the Shark DuoClean parts diagram effectively?

To use the Shark DuoClean parts diagram effectively, cross-reference it with your vacuum model number to locate specific parts and follow the diagram for assembly or disassembly.

What should I do if a part is missing from my Shark DuoClean vacuum?

If a part is missing from your Shark DuoClean vacuum, refer to the parts diagram to identify the specific part, then contact Shark customer service or an authorized dealer to order a replacement.

Are all Shark DuoClean models the same in their parts diagrams?

No, not all Shark DuoClean models have the same parts diagrams. Each model may have different components, so it's essential to use the diagram specific

to your model.

Can I repair my Shark DuoClean vacuum using the parts diagram?

Yes, you can repair your Shark DuoClean vacuum using the parts diagram as a guide, provided you have the necessary tools and replacement parts for the job.

Find other PDF article:

<https://soc.up.edu.ph/29-scan/pdf?docid=QUo34-8594&title=how-to-challenge-students-in-math.pdf>

Shark Duoclean Parts Diagram

AGV ARAI SHOEI SHARK - Mobile01

Jan 21, 2015 · AGV ARAI SHOEI SHARK
AGV ARAI SHOEI SHARK ...

...

Aug 18, 2023 · Ginglymostoma cirratum ...

shark -

Shark Tek ...

Card Shark -

Card Shark 18 ...

BYD SHARK ...

Shark 38.66~41.65 Shark ...

Shark -

Shark Ultra7 265K RTX4090D 64GB DDR5 2TB Z890 4M.2 ...

SHARK D-SKWAL 2 NANO ...

Sep 29, 2023 · ESP D-SKWAL 2 ESP SHARK ...

shark - Mobile01

Feb 16, 2022 · shark cp shoei arai 8 shark ...

2023年12月27日 星期三 AGV ...

SHARK 1973年12月27日 星期三 2014年12月27日 星期三

SHARK 1973年12月27日 星期三

SHARK 1973年12月27日 星期三 2014年12月27日 星期三

AGV ARAI SHOEI SHARK - Mobile01

Jan 21, 2015 · AGV ARAI SHOEI SHARK 1973年12月27日 星期三

AGV ARAI SHOEI SHARK 1973年12月27日 星期三

AGV ARAI SHOEI SHARK 1973年12月27日 星期三

Aug 18, 2023 · Ginglymostoma cirratum 1973年12月27日 星期三

shark 1973年12月27日 星期三

Shark Tek 1973年12月27日 星期三

Card Shark 1973年12月27日 星期三

Card Shark 1973年12月27日 星期三 18 1973年12月27日 星期三

BYD SHARK 1973年12月27日 星期三

Shark 38.66~41.65 1973年12月27日 星期三 Shark 1973年12月27日 星期三

Explore our detailed Shark Duoclean parts diagram to easily identify and replace components. Learn more to keep your vacuum running smoothly!

[Back to Home](#)