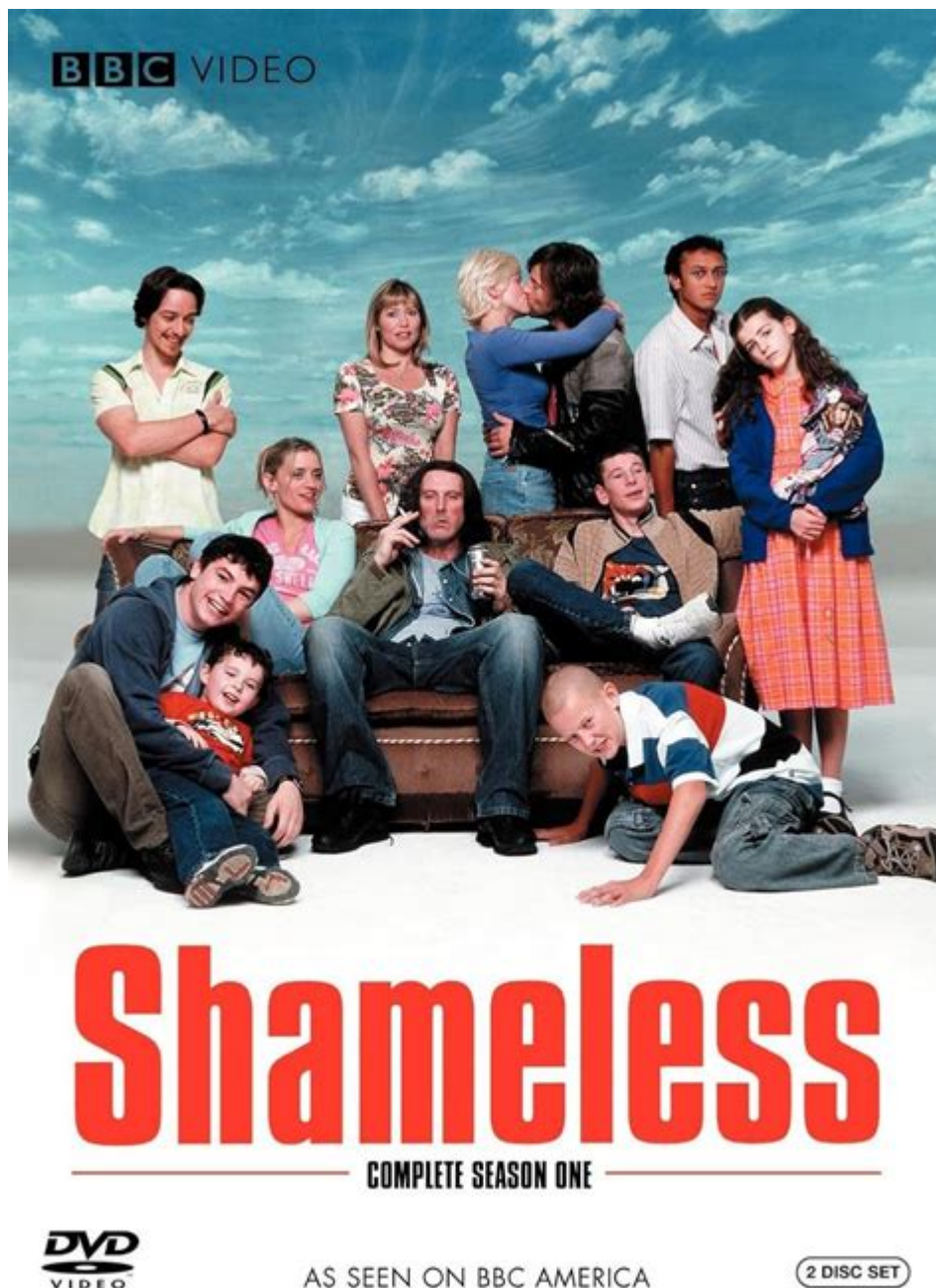


Shameless Imdb Parents Guide



Shameless IMDB Parents Guide is an essential resource for parents, guardians, and viewers who want to understand the content and themes presented in the critically acclaimed TV series "Shameless." This guide provides detailed insights into the show's mature themes, explicit content, and other factors that might be concerning for younger audiences or sensitive viewers. In this article, we will explore the significance of the IMDB Parents Guide for "Shameless," discuss its content, and provide tips for parents on how to approach the show with their children.

Understanding "Shameless"

"Shameless" is a dramedy that aired on Showtime from January 2011 to April 2021. The series is an adaptation of the British show of the same name and follows the dysfunctional Gallagher family living in the South Side of Chicago. The show is known for its raw portrayal of poverty, addiction, and complex family dynamics.

The Gallagher family, led by the irresponsible patriarch Frank Gallagher, faces numerous challenges that highlight the struggles of lower-class America. Each character brings their unique storylines, often revolving around themes of love, betrayal, and survival. While the series has received acclaim for its writing and performances, it is also infamous for its graphic content, making the IMDb Parents Guide a crucial tool for viewers.

The Importance of the IMDb Parents Guide

Parents and guardians often seek resources to gauge whether a show is appropriate for their children. The IMDb Parents Guide offers a concise breakdown of various elements in a film or TV show, including:

- Sexual Content
- Violence
- Profanity
- Drug and Alcohol Use
- Scary or Disturbing Content

By reviewing the IMDb Parents Guide for "Shameless," parents can make informed decisions about whether the show aligns with their values and the maturity level of their children.

Key Content Warnings in "Shameless"

The following sections will detail some of the main categories featured in the IMDb Parents Guide for "Shameless." Understanding these elements can help parents prepare for the themes and situations presented in the series.

Sexual Content

"Shameless" does not shy away from depicting sexual situations, which can range from humorous to explicit. The series features:

- Nudity: Both male and female characters are often shown nude in various

contexts.

- **Sexual Situations:** Numerous scenes involve sexual acts, often portrayed in a comedic or dramatic light.
- **Sexual Themes:** Issues like infidelity, sexual orientation, and consent are recurring themes throughout the series.

Parents should be aware that the sexual content in "Shameless" is graphic and may not be suitable for younger viewers.

Violence

While "Shameless" is primarily a comedy-drama, it does contain elements of violence. The show includes:

- **Physical Altercations:** Characters often engage in fights, which can be portrayed as humorous or serious.
- **Domestic Issues:** Scenes of domestic violence or threats are depicted, reflecting the harsh realities faced by some characters.
- **Crime-Related Violence:** The series occasionally explores themes related to crime, which can involve violent encounters.

Understanding these aspects can help parents gauge the appropriateness of the show for their children.

Profanity

The use of strong language is prevalent throughout "Shameless." The show features:

- **Frequent Use of Expletives:** Characters often use profanity in both casual and heated situations.
- **Slurs and Derogatory Language:** Some episodes contain language that may be offensive to certain groups.

Parents should consider whether they are comfortable with their children being exposed to such language.

Drug and Alcohol Use

One of the central themes of "Shameless" is the impact of addiction and substance abuse on families. The series includes:

- **Alcoholism:** Frank Gallagher's struggles with alcoholism are a recurring storyline.
- **Drug Use:** Characters frequently use drugs, which is depicted realistically, showing both the highs and the lows.
- **Effects of Addiction:** The show explores the consequences of substance abuse on relationships and personal health.

Given the serious nature of these themes, parents may want to discuss the implications of drug and alcohol use with their children.

Scary or Disturbing Content

While "Shameless" is primarily a comedic series, it does not shy away from disturbing themes. The show features:

- **Trauma:** Characters experience significant trauma that can be triggering for some viewers.
- **Morality:** The show often challenges viewers' moral perspectives, which can provoke deep discussions.
- **Realistic Depictions of Poverty:** The struggles faced by the Gallagher family can be heart-wrenching and may resonate deeply with viewers.

Understanding these elements can help parents prepare for the emotional impact of the series.

Tips for Parents

If you are considering allowing your children to watch "Shameless," here are some tips to facilitate constructive conversations and ensure a safe viewing experience:

1. **Watch Together:** Viewing the show as a family can promote discussion about the themes presented.
2. **Discuss Content:** Engage in conversations about the depicted behaviors and their consequences, helping children understand the underlying messages.
3. **Set Boundaries:** Determine if there are specific episodes or scenes that you would prefer your children not to watch.
4. **Monitor Reactions:** Pay attention to your child's reactions to the content and be open to addressing their thoughts and feelings.

Conclusion

In conclusion, the **Shameless IMDb Parents Guide** serves as an invaluable tool for navigating the complex themes and mature content of this popular series. By understanding the various elements of the show, parents can make informed decisions about whether it is suitable for their children. Open communication and constructive discussions about the themes presented can enhance the viewing experience and provide valuable life lessons. As always, it is important to consider each child's maturity level and sensitivity to certain topics when introducing them to shows like "Shameless."

Frequently Asked Questions

What is the purpose of the IMDb Parents Guide for 'Shameless'?

The IMDb Parents Guide provides detailed information about the content of 'Shameless', including specific scenes that may be inappropriate for certain audiences, helping parents make informed viewing choices.

What types of content warnings are included in the 'Shameless' IMDb Parents Guide?

The guide includes warnings about sexual content, violence, substance abuse, strong language, and other mature themes that are prevalent in the series.

How can I access the IMDb Parents Guide for 'Shameless'?

You can access the IMDb Parents Guide by visiting the IMDb website, searching for 'Shameless', and navigating to the Parents Guide section on the show's page.

Are there specific episodes of 'Shameless' that have more intense content according to the Parents Guide?

Yes, certain episodes are noted for having more intense or explicit content, and the Parents Guide often highlights these episodes for parents' awareness.

Is the 'Shameless' IMDb Parents Guide updated regularly?

Yes, the IMDb Parents Guide is updated regularly as new episodes are released and additional user submissions provide feedback on content.

Does the Parents Guide for 'Shameless' include user-submitted content reviews?

Yes, the Parents Guide often includes user-submitted content reviews that provide personal insights and additional context about the show's themes and scenes.

Can the Parents Guide help gauge the suitability of 'Shameless' for younger viewers?

Absolutely. The Parents Guide is designed to help gauge the suitability of the show for younger viewers by detailing the types of content that may be deemed inappropriate.

What age group is 'Shameless' generally considered appropriate for according to the Parents Guide?

While the Parents Guide does not set an official age rating, 'Shameless' is typically considered appropriate for mature audiences, usually recommended for ages 17 and older due to its explicit content.

Find other PDF article:

<https://soc.up.edu.ph/20-pitch/Book?ID=pWa27-5205&title=epoch-icf-technology-charge.pdf>

Shameless Imdb Parents Guide

Parents Guide Shameless Season 11 - IMDb

Dec 6, 2020 · [Shameless Season 11](#) - IMDb

Parents Guide Shameless Season 7 - IMDb

Oct 2, 2016 · [Shameless Season 7](#) - IMDb

Parents Guide Shameless Season 9 - IMDb

Sep 9, 2018 · [Shameless Season 9](#) - IMDb

Parents Guide Shameless Season 6 - IMDb

Jan 10, 2016 · [Shameless Season 6](#) - IMDb

Parents Guide Shameless Season 1 - IMDb

Jan 13, 2004 · [Shameless Season 1](#) - IMDb

Parents Guide Shameless Season 10 - IMDb

Nov 10, 2019 · [Shameless Season 10](#) - IMDb

Parents Guide Shameless Season 5 - IMDb

Jan 11, 2015 · [Shameless Season 5](#) - IMDb

.....

shameless -

shameless 2021-04-13 07:30

()

Jan 9, 2007 · The critically acclaimed and brilliantly funny drama from award-winning writer Paul Abbott features the Chatsworth Estate's Gallaghers, probably the UK's most dysfunctional family. Shameless is packed with sex, drugs, gratuitous violence, love and scams. Chaos ensues with more tales of how one extraordinary family goes about its normal everyday ...

() Shameless Season 11 -

Dec 6, 2020 · Gallagher

() **Shameless Season 7** -

Oct 2, 2016 · Shameless Frank Fiona ...

() Shameless Season 9 -

Sep 9, 2018 · 9 showtime + 8 9 " ...

() Shameless Season 6 -

Jan 10, 2016 · Mickey Ian CP Lip V Debbie ...

-

mandy mickey gallagher frank debbie ...

Discover the Shameless IMDb parents guide to understand the show's adult themes and content. Learn more about what to expect before watching!

[Back to Home](#)