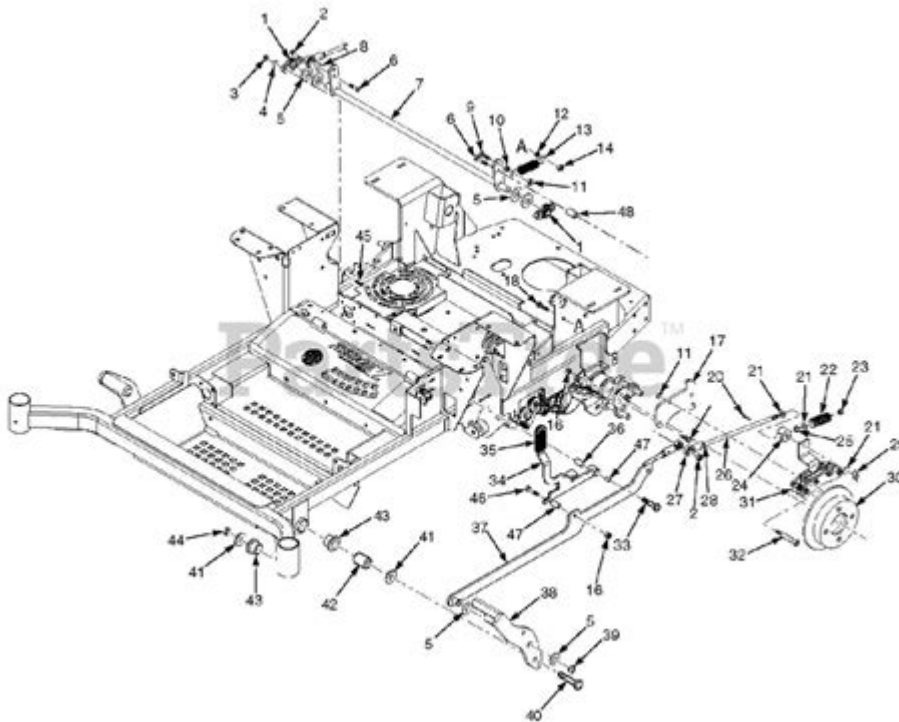


Scag Freedom Z Drive Belt Diagram



Scag Freedom Z Drive Belt Diagram

The Scag Freedom Z is a popular zero-turn mower known for its durability, efficiency, and ease of use. One of the essential components of this mower is the drive belt, which plays a crucial role in transferring power from the engine to the wheels. Understanding the drive belt diagram is vital for maintenance, troubleshooting, and repairs. This article will provide a comprehensive overview of the Scag Freedom Z drive belt diagram, including its components, installation procedures, maintenance tips, and troubleshooting common issues.

Understanding the Drive Belt System

The drive belt system in the Scag Freedom Z consists of several key components that work together to ensure smooth operation. Understanding how these components interact is essential for effective maintenance and repair.

Key Components

1. **Engine Pulley:** The engine pulley is connected to the engine and is responsible for generating power.
2. **Drive Belt:** The drive belt transmits power from the engine pulley to the transmission system.
3. **Transmission Pulley:** The transmission pulley receives the power from the drive belt and transfers it to the wheels.
4. **Idler Pulley:** The idler pulley maintains proper tension on the drive belt, preventing slippage and ensuring efficient operation.
5. **Tensioner:** The tensioner adjusts the belt tension automatically, ensuring optimal performance at all times.

Drive Belt Diagram Overview

The drive belt diagram provides a visual representation of how the drive belt is routed through the various components of the mower. This diagram is crucial for anyone looking to replace or adjust the drive belt.

Importance of the Drive Belt Diagram

1. **Installation Guidance:** The diagram shows the correct routing of the drive belt, which is essential for proper installation.
2. **Troubleshooting:** Understanding the diagram helps identify issues such as belt wear, misalignment, or improper tension.
3. **Maintenance:** Regular maintenance of the drive belt can prevent costly repairs and extend the mower's lifespan.

How to Read the Drive Belt Diagram

Reading the drive belt diagram requires an understanding of the symbols and notations used. Here are some tips to help you interpret the diagram effectively:

1. **Identify Components:** Familiarize yourself with the various components depicted in the diagram, such as pulleys, the drive belt, and the engine.
2. **Follow the Routing:** Pay attention to the routing arrows, which indicate the path the drive belt should take. This is crucial for proper installation.
3. **Check Tension Points:** Look for markings that indicate tensioner locations and idler pulleys, as they play a significant role in maintaining the correct belt tension.

Installing the Drive Belt

Installing the drive belt correctly is essential to ensure the mower operates efficiently. Here's a step-by-step guide:

Tools Required

- Socket wrench set
- Screwdriver
- Torque wrench (if needed)
- Replacement drive belt

Step-by-Step Installation Guide

1. **Safety First:** Ensure the mower is turned off and has cooled down. Disconnect the spark plug wire to prevent accidental starting.
2. **Remove the Old Drive Belt:**
 - Locate the drive belt and inspect its condition.
 - Use a socket wrench to remove any bolts securing the belt cover.
 - Carefully remove the old drive belt from the pulleys.
3. **Install the New Drive Belt:**
 - Refer to the drive belt diagram to ensure correct routing.
 - Start by placing the new belt around the engine pulley.
 - Continue routing the belt around the idler pulley and transmission pulley, ensuring it sits properly in the grooves.
4. **Adjust the Tension:**
 - Check the tensioner and adjust it according to the manufacturer's specifications.
 - Ensure the belt has the correct amount of tension to prevent slippage.
5. **Reassemble:** Replace any covers or guards that were removed during the process.
6. **Reconnect the Spark Plug:** Finally, reconnect the spark plug wire and start the mower to test the installation.

Maintenance Tips for the Drive Belt

Proper maintenance of the drive belt can significantly extend its life and keep your Scag Freedom Z running smoothly. Here are some essential maintenance tips:

1. **Regular Inspections:** Check the drive belt regularly for signs of wear, fraying, or cracking. Early detection can prevent costly repairs.
2. **Cleanliness:** Keep the area around the drive belt clean and free of debris. Grass clippings and dirt can cause the belt to wear prematurely.
3. **Check Tension:** Ensure that the belt tension is within the manufacturer's specifications. An overly tight or loose belt can lead to performance issues.
4. **Lubricate Pulleys:** Regularly lubricate the pulleys and idler bearings to ensure smooth operation and

reduce wear on the belt.

5. Replace When Necessary: If you notice significant wear or damage to the belt, replace it promptly to avoid further damage to the mower.

Troubleshooting Common Drive Belt Issues

Even with regular maintenance, you may encounter issues with the drive belt system. Here are some common problems and their solutions:

Common Issues

1. Belt Slipping: If the belt slips off the pulleys, it may be due to improper tension or misalignment.

- Solution: Check the belt tension and alignment according to the drive belt diagram. Adjust as necessary.

2. Belt Wear: Excessive wear on the drive belt can be a sign of misalignment or debris buildup.

- Solution: Inspect the pulleys and ensure they are clean and properly aligned. Replace the belt if it is severely worn.

3. No Power to Wheels: If the mower is not moving despite the engine running, it could indicate a broken or severely worn drive belt.

- Solution: Inspect the drive belt for damage and replace it if needed.

Conclusion

The Scag Freedom Z drive belt diagram is an essential tool for anyone involved in the maintenance or repair of this zero-turn mower. By understanding the components of the drive belt system, knowing

how to read the diagram, and following proper installation and maintenance procedures, you can ensure that your mower operates efficiently for years to come. Regular inspections and prompt troubleshooting will help you avoid costly repairs and keep your mower in top condition. Whether you are a seasoned professional or a DIY enthusiast, familiarity with the drive belt diagram will enhance your ability to maintain your Scag Freedom Z effectively.

Frequently Asked Questions

What is a Scag Freedom Z drive belt diagram used for?

The Scag Freedom Z drive belt diagram is used to illustrate the routing of the drive belts in the mower, helping users understand how to properly install or replace the belts for optimal performance.

Where can I find the Scag Freedom Z drive belt diagram?

The drive belt diagram can typically be found in the owner's manual, on Scag's official website, or through authorized dealers and service centers.

What tools do I need to replace the drive belt on a Scag Freedom Z?

To replace the drive belt, you will generally need basic tools such as wrenches, socket sets, and possibly a belt removal tool, along with the appropriate replacement belt.

How often should I check the drive belt on my Scag Freedom Z?

It is recommended to check the drive belt regularly, ideally at the start of each mowing season or after every 50 hours of operation, for signs of wear or damage.

What are common signs that the drive belt needs replacement?

Common signs include cracks, fraying, excessive wear, slipping during operation, or unusual noises while the mower is running.

Can I use a generic drive belt for my Scag Freedom Z?

While some generic belts may fit, it is best to use OEM (Original Equipment Manufacturer) belts designed specifically for the Scag Freedom Z to ensure proper performance and longevity.

What is the procedure for installing a new drive belt on a Scag Freedom Z?

To install a new drive belt, first, disconnect the battery, remove any covers as indicated in the diagram, route the belt according to the diagram, and reassemble all components before reconnecting the battery and testing the mower.

Find other PDF article:

<https://soc.up.edu.ph/30-read/pdf?docid=dXd59-7048&title=how-to-download-ebook-from-scribd.pdf>

Scag Freedom Z Drive Belt Diagram

Downtown Chicago Luxury Boutique Hotel | Pendry Chicago

With modern interiors, signature culinary concepts and inspired gathering spaces, this luxury downtown Chicago hotel embodies the spirit of the windy city and offers a prime locale to ...

PENDRY CHICAGO - Updated 2025 Prices & Hotel Reviews (IL)

Set within the iconic 1929 Art Deco Carbide & Carbon Building in Chicago's Loop neighborhood, Pendry Chicago is a modern-day luxury hotel that pays homage to both the past and the present with contemporary, comfortable interiors, signature culinary and cocktail concepts, and inspired gathering spaces throughout that embody the spirit of Chicago.

Pendry Chicago — Hotel Review | Condé Nast Traveler

Find Pendry Chicago, Chicago, Illinois, United States, ratings, photos, prices, expert advice, traveler reviews and tips, and more information from Condé Nast Traveler.

Pendry Chicago, Chicago (updated prices 2025) - Booking.com

Prime Location: Pendry Chicago is located in Chicago city center, offering easy access to key attractions. Millennium Park is a 6-minute walk away, while the Art Institute of Chicago lies less than 0.6 mi from the hotel.

Pendry Chicago - Chicago - Book a MICHELIN Guide Hotel

It's a perfect fit for Pendry, the urban luxury-boutique cousin to the Montage resorts; Pendry Chicago combines contemporary boutique-hotel good looks with upscale comforts and impressive views of the distinctive Loop cityscape.

Pendry Chicago (Everything To Know Before A Visit)

Pendry Chicago is a luxurious hotel located at 230 N Michigan Ave, situated within the renowned Art Deco Carbide & Carbon Building, which was built in 1929. This hotel combines modern amenities with historic elegance, providing guests with a truly unique experience.

Hotel Suites in Chicago | Pendry Chicago Hotel Rooms

Explore our rooms and suites at Pendry Chicago. Experience the epitome of modern luxury and indulge in an exceptional stay at our downtown Chicago hotel.

Pendry Chicago - Preferred Hotels & Resorts

Jul 22, 2025 · Paying homage to the past while staying firmly grounded in the present, Pendry Chicago offers travelers to the largest city in the Midwest a simple and sophisticated stay through inspired interior design, dedicated service, and exceptional amenities and features.

Pendry Chicago - Latest 2025 Reviews, Chicago | Hotels.com

In the heart of Chicago, Pendry Chicago offers an elegant retreat with a rooftop terrace and stunning views. Savor French cuisine at Venteux, unwind with coffee from the cafe or get moving in the 24-hour gym.

Pendry Chicago | Fine Hotels + Resorts | Amex Travel

Iconic urban retreat. The Pendry Chicago on Michigan Avenue is housed in the former Carbide & Carbon building and is still home to the historic lobby, with gold Art Deco features original to the 1929 building. The hotel's stylish design embraces its rich heritage as well as the future.

Hill Elementary PTA

Hill Elementary School PTA 8601 Tallwood Drive Austin, TX 78759 (512) 414-2369

info@hillelementary.com Facebook Instagram

Communications - Hill Elementary PTA

Communications Hill Elementary School PTA 8601 Tallwood Drive Austin, TX 78759 (512) 414-2369

info@hillelementary.com

Dillo Dictionary - Hill Elementary PTA

Dillo Camp - Hill staff host various fun summer camps during the first two weeks of summer break.

Dillo Dads - An informal group of Hill parents who assist with campus projects.

Dillo Donations - Hill Elementary PTA

PTA has purchased technology subscriptions like NearPod, Class Composer, Learning A-Z and also funds the school's computer technician who supports the technology needs of the campus.

Stay Connected - Hill Elementary PTA

A go-to for info about the school, teachers, spirit gear, and AISD resources. Hill Campus Website:

The official Hill Elementary School website managed by school administrators.

HILL ELEMENTARY SCHOOL PARENT TEACHER ...

Any Hill Elementary student who needs assistance in order to participate in class, grade, or school activities where the goal is 100% participation is eligible to receive funds from this budgeted line item.

Join PTA - Hill Elementary PTA

Hill PTA has over 50 committees and over 100 volunteers who raise funds and administer programs

to enrich our children's learning experience. We have monthly meetings in the library after drop off.

meeting-reminder-post-it-note - Hill Elementary PTA

Hill Elementary is a blue ribbon school located in Northwest Hills in Austin, Texas. It serves the communities of Northwest Hills, Great Hills, Lakewood and Jester Estates, near the greenbelts of northwest Austin.

Corporate Matching - Hill Elementary PTA

Hill Elementary School PTA 8601 Tallwood Drive Austin, TX 78759 (512) 414-2369

info@hillelementary.com Facebook Instagram Copyright © 2025 | Hill Elementary School PTA

Our Hill History - Hill Elementary PTA

Learn about Nina and Maclovia Hill, two Austin teachers for whom Hill Elementary was named. You'll also learn about Roth Feeley, the beloved Hill student whose passing inspired the building of Hill Harbor.

Discover the Scag Freedom Z drive belt diagram to simplify your mower maintenance. Learn more about installation and troubleshooting tips for optimal performance!

[Back to Home](#)