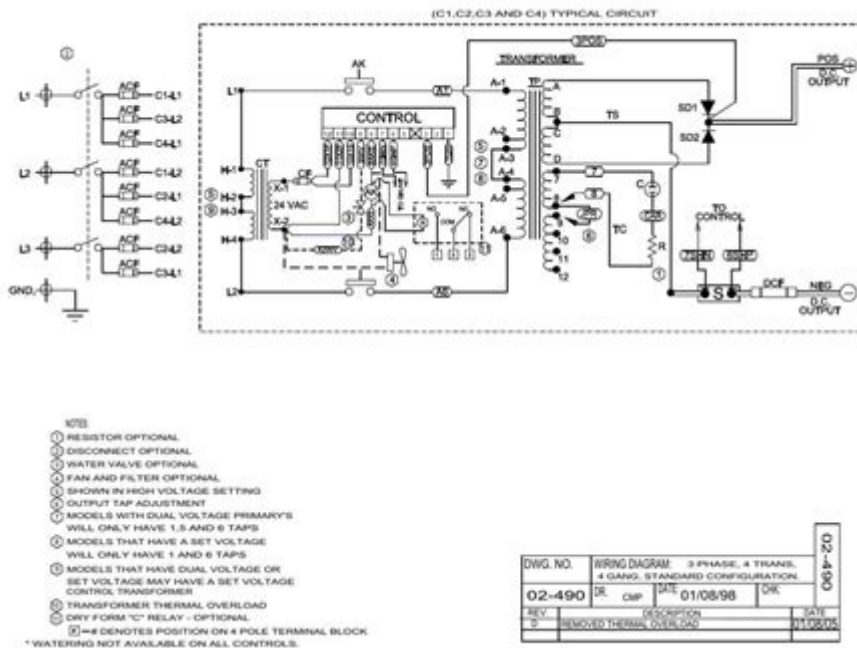


# Schumacher Battery Charger Se 4020 Wiring Diagram



**Schumacher battery charger SE 4020 wiring diagram** is an essential resource for users who want to understand the intricacies of their battery charging device. The Schumacher SE 4020 is a powerful battery charger that is designed to efficiently charge a variety of battery types, including lead-acid and AGM batteries. Understanding its wiring diagram not only empowers users to make the best use of the charger but also ensures safety and efficiency during operation. This article will delve into the specifics of the SE 4020 wiring diagram, its components, and how to interpret it effectively for optimal use.

## Overview of the Schumacher SE 4020 Battery Charger

The Schumacher SE 4020 is a versatile battery charger with various features, including:

- **Multiple Charging Modes:** Designed to handle different types of batteries, including 6V and 12V systems.
- **Automatic Shutoff:** Prevents overcharging by automatically shutting off when the battery is fully charged.
- **LED Indicators:** Provide visual feedback on the charging status and battery condition.
- **Safety Features:** Includes reverse polarity protection and short-circuit

protection to ensure user safety.

Understanding the wiring diagram is crucial for troubleshooting and maintenance, as it provides insight into the internal workings of the charger.

## **Components of the Schumacher SE 4020**

To fully understand the wiring diagram, it is essential to know the various components that make up the Schumacher SE 4020 battery charger. These components include:

### **1. Power Supply**

The power supply converts the AC input voltage into the DC voltage required for charging batteries. It is vital for the charger's operation and efficiency.

### **2. Control Circuit**

This circuit manages the overall operation of the charger, including the selection of charging modes and the automatic shutoff feature.

### **3. Output Terminals**

The output terminals are where the user connects the battery cables. They typically include a positive (+) and a negative (-) terminal.

### **4. LED Indicators**

These indicators display the status of the charger, including whether it is charging, fully charged, or in a fault condition.

### **5. Cooling Fan**

To prevent overheating, the charger includes a cooling fan that activates during operation, especially under heavy loads.

## **Understanding the Wiring Diagram**

The wiring diagram for the Schumacher SE 4020 is a visual representation of how the various components are interconnected. Understanding this diagram is

crucial for anyone looking to troubleshoot or repair the charger.

## 1. Reading the Diagram

- Symbols: Familiarize yourself with common symbols used in wiring diagrams, such as:
  - Solid lines represent wires.
  - Dots indicate connections.
  - Arrows may indicate the direction of current flow.
- Color Codes: Note the color coding of wires, which often indicates their function. Common color codes include:
  - Red for positive connections.
  - Black for negative connections.
  - Yellow or green for ground connections.

## 2. Key Connections in the SE 4020 Wiring Diagram

The main connections illustrated in the wiring diagram typically include:

- Input Power Connection: This is where the AC power supply connects to the charger.
- Transformer Connections: The transformer is usually represented as a block, showing how it receives and transforms the input voltage.
- Rectifier Circuit: This section converts AC to DC and is crucial for battery charging.
- Control Circuit Wiring: Shows how the control circuit is connected to various components like the LED indicators and the cooling fan.
- Output Terminals: The final section of the diagram illustrates how the output terminals are wired to the control circuit and the battery.

## Importance of Proper Wiring

Proper wiring is critical for the safe and efficient operation of the Schumacher SE 4020 battery charger. Here are some key reasons why users must pay attention to the wiring:

### 1. Safety

Incorrect wiring can lead to electrical shocks, short circuits, or even fires. It is crucial to follow the wiring diagram meticulously to prevent accidents.

## **2. Performance**

Proper wiring ensures that the charger operates at its optimal performance level. Misconnections can lead to inefficiencies, resulting in longer charging times or incomplete charges.

## **3. Longevity of the Charger**

Maintaining the integrity of the wiring can help prolong the life of the charger. Over time, exposed or damaged wires can lead to further damage to the internal components.

# **Troubleshooting Common Wiring Issues**

Even with proper wiring, users may encounter issues with the Schumacher SE 4020. Here are some common problems and how to troubleshoot them:

## **1. Charger Not Turning On**

- Check Power Supply: Ensure that the charger is plugged in and that the outlet is functioning.
- Inspect Cables: Look for any visible damage to the power cord or connections.

## **2. LED Indicators Not Working**

- Loose Connections: Check for loose wires, especially around the LED circuit.
- Faulty LEDs: If the wiring is intact, the LEDs themselves may need replacement.

## **3. Overheating Issues**

- Blocked Ventilation: Ensure that the cooling fan is operational and that vents are not blocked.
- Excessive Load: Reduce the load on the charger if it is overheating under normal conditions.

# **Conclusion**

Understanding the Schumacher battery charger SE 4020 wiring diagram is crucial for anyone looking to use this device effectively. Familiarity with the components, proper interpretation of the wiring diagram, and knowledge of

troubleshooting techniques can enhance the user experience and ensure a safe charging process. By adhering to the guidelines laid out in this article, users can make the most of their Schumacher SE 4020, ensuring that their batteries are charged efficiently and safely. Whether for personal or professional use, a solid grasp of the wiring diagram empowers users to handle their charging needs confidently.

## **Frequently Asked Questions**

### **What is the wiring diagram for the Schumacher Battery Charger SE 4020 used for?**

The wiring diagram for the Schumacher Battery Charger SE 4020 is used to illustrate the electrical connections and components within the charger, helping users understand how to properly connect and use the device.

### **Where can I find the wiring diagram for the Schumacher SE 4020 battery charger?**

The wiring diagram for the Schumacher SE 4020 battery charger can typically be found in the user manual, on the manufacturer's website, or through customer support.

### **What are the key components shown in the wiring diagram of the Schumacher SE 4020?**

Key components in the wiring diagram include the transformer, rectifier, control circuit, output terminals, and safety fuses.

### **Is it safe to work with the wiring diagram of the Schumacher SE 4020?**

Yes, as long as proper safety precautions are taken, such as disconnecting power before making any changes and following the diagram closely.

### **Can I use the Schumacher SE 4020 battery charger without understanding the wiring diagram?**

While it's possible to use the charger without understanding the wiring diagram, having knowledge of it can help troubleshoot issues and ensure correct usage.

### **What should I do if the wiring diagram for the Schumacher SE 4020 is missing?**

If the wiring diagram is missing, you can contact Schumacher customer service or check their website for a digital copy.

## **How do I troubleshoot issues using the wiring diagram of the Schumacher SE 4020?**

To troubleshoot, compare the connections in your charger to the wiring diagram, check for loose wires, and ensure all components are functioning as intended.

## **Are there any online forums where I can discuss the Schumacher SE 4020 wiring diagram?**

Yes, online forums such as Reddit, automotive repair forums, and dedicated battery charger communities often have discussions on wiring diagrams and troubleshooting.

## **What safety precautions should I take when following the Schumacher SE 4020 wiring diagram?**

Ensure the charger is unplugged before working on it, wear insulated gloves, and avoid working in wet conditions to prevent electrical shocks.

## **Can I modify the wiring based on the diagram for different battery types?**

Yes, modifications can be made based on the wiring diagram to accommodate different battery types, but ensure compatibility and safety before proceeding.

Find other PDF article:

<https://soc.up.edu.ph/06-link/Book?ID=PuY19-9229&title=angle-pairs-worksheet-answer-key.pdf>

## **Schumacher Battery Charger Se 4020 Wiring Diagram**

Michael Schumacher - Wikipedia

Michael Schumacher (German: [ˈmɪçaːʔeːl ˈʃuːmaxɐ] ; born 3 January 1969) is a German former racing driver who competed in Formula One from 1991 to 2006 and from 2010 to 2012. ...

**Michael Schumacher | Ski Accident, Ferrari, Coma, Biography, ...**

Jun 20, 2025 · Michael Schumacher (born January 3, 1969, Hürth-Hermülhein, West Germany [now in Germany]) is a German race-car driver who set records for the most Formula One (F1) ...

*Schumacher | A Designer's Resource for Fabric, Wallpaper & Trim*

Shop for fabrics, wallpaper and wallcoverings, trims, pillows, accessories, furniture and more at the official Schumacher website.

### **Michael Schumacher's good friend issues sad health update on ...**

Jun 24, 2025 · Schumacher is one of the most successful F1 drivers of all time, winning world titles in 1994, 1995 and five consecutive years from 2000 to 2004. He also racked up 71 fastest ...

### *Michael Schumacher Races, Wins and Teams | F1 Driver | F1 ...*

Michael Schumacher, one of the greatest F1 drivers in the sport's history, drove for various teams, including Jordan, Benetton, Ferrari, and Mercedes and won a record-equalling seven World ...

### **Michael Schumacher's heartbreaking update from F1 legend's ...**

Jun 21, 2025 · Flavio Briatore, a close friend and former boss of Michael Schumacher, has given an emotional update on the Formula 1 legend's condition. Schumacher sustained a serious ...

### **Michael Schumacher Tragic Health Update: F1 Legend 'Can No ...**

Mar 30, 2025 · Michael Schumacher is reportedly no longer able to speak and needs "constant care" from his family and caregivers. According to the latest media reports, Schumacher needs ...

### News - Michael Schumacher

Get all the up-to-date information by and about Michael Schumacher! Learn more about his most important events, activities and other interesting news.

### **Michael Schumacher biography**

Michael Schumacher is the most successful F1 driver ever, winning the most victories, most championship points and a record seven World Drivers' Championship Titles.

### **Michael Schumacher now: Skiing accident means F1 icon is out ...**

Jun 8, 2025 · F1 legend Michael Schumacher will go down in history as one of the greatest racing drivers of all time. But Schumacher's life changed dramatically when he suffered a horrific ...

### **Michael Schumacher - Wikipedia**

Michael Schumacher (German: [ˈmɪçaːʔeːl ˈʃuːmaxe] ⓘ; born 3 January 1969) is a German former racing driver who competed in Formula One from 1991 to 2006 and from 2010 to 2012. ...

### **Michael Schumacher | Ski Accident, Ferrari, Coma, Biography, ...**

Jun 20, 2025 · Michael Schumacher (born January 3, 1969, Hürth-Hermülhein, West Germany [now in Germany]) is a German race-car driver who set records for the most Formula One (F1) Grand ...

### *Schumacher | A Designer's Resource for Fabric, Wallpaper & Trim*

Shop for fabrics, wallpaper and wallcoverings, trims, pillows, accessories, furniture and more at the official Schumacher website.

### **Michael Schumacher's good friend issues sad health update on ...**

Jun 24, 2025 · Schumacher is one of the most successful F1 drivers of all time, winning world titles in 1994, 1995 and five consecutive years from 2000 to 2004. He also racked up 71 fastest laps ...

### **Michael Schumacher Races, Wins and Teams | F1 Driver | F1 History**

Michael Schumacher, one of the greatest F1 drivers in the sport's history, drove for various teams, including Jordan, Benetton, Ferrari, and Mercedes and won a record-equalling seven World ...

### Michael Schumacher's heartbreaking update from F1 legend's ...

Jun 21, 2025 · Flavio Briatore, a close friend and former boss of Michael Schumacher, has given an emotional update on the Formula 1 legend's condition. Schumacher sustained a serious brain ...

### Michael Schumacher Tragic Health Update: F1 Legend 'Can No

Mar 30, 2025 · Michael Schumacher is reportedly no longer able to speak and needs "constant care" from his family and caregivers. According to the latest media reports, Schumacher needs ...

#### *News - Michael Schumacher*

Get all the up-to-date information by and about Michael Schumacher! Learn more about his most important events, activities and other interesting news.

#### *Michael Schumacher biography*

Michael Schumacher is the most successful F1 driver ever, winning the most victories, most championship points and a record seven World Drivers' Championship Titles.

### Michael Schumacher now: Skiing accident means F1 icon is out of ...

Jun 8, 2025 · F1 legend Michael Schumacher will go down in history as one of the greatest racing drivers of all time. But Schumacher's life changed dramatically when he suffered a horrific skiing ...

Discover the Schumacher battery charger SE 4020 wiring diagram for easy installation. Get step-by-step guidance and optimize your charging experience. Learn more!

[Back to Home](#)