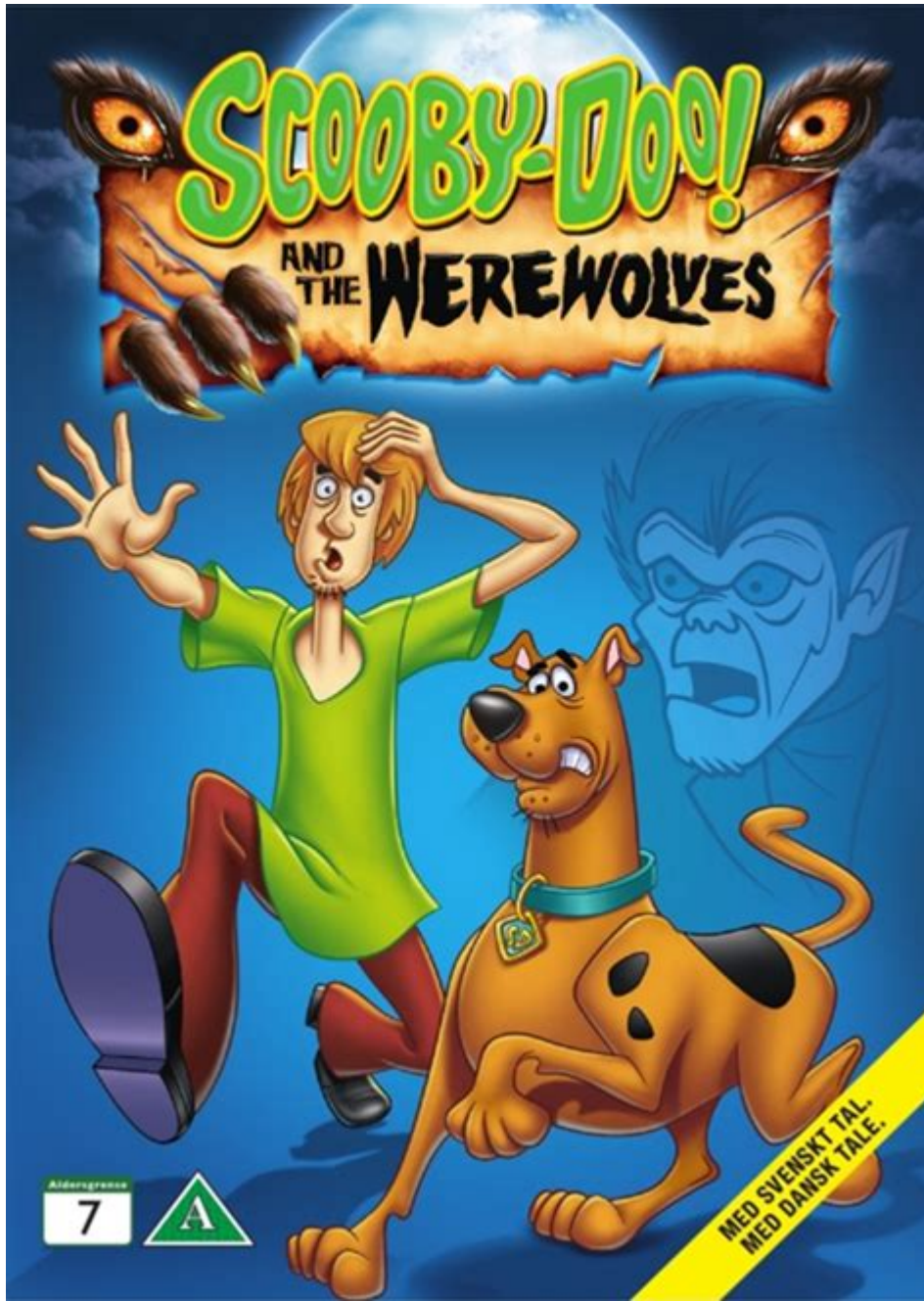


Scooby Doo And The Werewolves



Scooby Doo and the Werewolves is a thrilling addition to the iconic franchise that has captured the hearts of audiences for decades. Combining mystery, adventure, and a hint of the supernatural, this storyline takes the beloved Mystery Inc. gang on a chilling escapade that tests their bravery and camaraderie. In this article, we will delve into the plot, characters, and themes of "Scooby Doo and the Werewolves," while also examining its impact on the franchise and the audience.

Plot Overview of Scooby Doo and the Werewolves

The plot of "Scooby Doo and the Werewolves" revolves around a series of mysterious events

occurring in a small town known for its legends of werewolves. The gang—Scooby-Doo, Shaggy, Fred, Daphne, and Velma—receives a distress call from the town's mayor, who fears that a werewolf is terrorizing the locals. As the gang arrives, they encounter eerie howls echoing through the night, strange sightings, and an atmosphere thick with suspense.

The Classic Mystery Setup

As with many Scooby-Doo episodes, the story begins with the gang solving minor mysteries, which soon escalate into something more sinister. The werewolf legend serves as a perfect backdrop for the gang's investigation. They split up to gather clues, each character bringing their unique skills to the table:

- **Fred:** The leader who devises plans to trap the monster.
- **Daphne:** The fashion-forward detective who often finds herself in precarious situations but always manages to help the team.
- **Velma:** The brains of the operation, who often uncovers critical clues with her analytical thinking.
- **Shaggy and Scooby:** The comic relief duo, often driven by their insatiable hunger, but also providing unexpected bravery when it counts.

Character Development

In “Scooby Doo and the Werewolves,” character development plays a significant role as the gang confronts their fears and doubts. The werewolf serves as a metaphor for internal struggles, showcasing how each character deals with their insecurities and vulnerabilities.

Shaggy and Scooby: The Fearless Duo

Shaggy and Scooby often embody the humorous side of fear. Their antics provide comic relief, yet their character arcs reveal deeper layers. Throughout the story, they face their fears head-on, learning to support one another and grow in bravery. Their bond is tested but ultimately strengthened, showing that even in the face of terror, friendship prevails.

Fred, Daphne, and Velma: The Brave Investigators

Fred, Daphne, and Velma also experience growth as they navigate the challenges posed by the werewolf mystery. Fred's leadership skills shine as he orchestrates plans and encourages the team to

stay focused. Daphne's resourcefulness and courage are put to the test, allowing her to step out of her comfort zone. Velma's intellect becomes crucial in deciphering clues related to the werewolf legend, reinforcing her role as the team's backbone.

Thematic Elements

"Scooby Doo and the Werewolves" explores several themes that resonate with both younger and older audiences. These themes include:

Friendship and Loyalty

At its core, the story emphasizes the importance of friendship and loyalty. The gang's unwavering support for one another during challenging times highlights how teamwork and trust can overcome even the most daunting obstacles.

Facing Fears

The werewolf symbolizes fear, both literal and metaphorical. As each character confronts their fears, viewers are reminded of the importance of bravery in the face of adversity. The narrative encourages audiences to acknowledge their fears and work through them with the help of others.

Good vs. Evil

The classic theme of good versus evil is prevalent throughout the story. Despite the supernatural elements, the real villain often turns out to be a human with ulterior motives. This twist reinforces the idea that appearances can be deceiving, a cornerstone of many Scooby-Doo adventures.

The Impact of Scooby Doo and the Werewolves

"Scooby Doo and the Werewolves" has made a significant impact on the franchise, appealing to both long-time fans and new audiences. Here are a few ways it has contributed to the legacy of Scooby-Doo:

Revitalizing the Franchise

By introducing new supernatural elements, the storyline revitalizes the classic formula of the series. The werewolf theme breathes fresh life into the franchise while maintaining the essence that fans love. This blend of nostalgia and innovation attracts a diverse audience, ensuring the series remains relevant.

Engaging New Generations

The incorporation of modern storytelling techniques and relatable themes helps engage new generations of viewers. Children today can relate to the characters' struggles, making the show not only entertaining but also educational. The messages of friendship, bravery, and critical thinking resonate across age groups, fostering a new appreciation for the series.

Merchandising and Spin-Offs

The popularity of "Scooby Doo and the Werewolves" has led to an increase in merchandising opportunities, including toys, apparel, and video games. Additionally, the success of this narrative may pave the way for potential spin-offs or sequels, further expanding the Scooby-Doo universe.

Conclusion

In conclusion, **Scooby Doo and the Werewolves** is a captivating addition to the Scooby-Doo franchise that expertly blends mystery, humor, and lessons about friendship and courage. Through dynamic character development and relatable themes, the story not only entertains but also imparts valuable life lessons. As the Mystery Inc. gang continues to face new challenges, audiences can look forward to more thrilling adventures that celebrate the spirit of teamwork and the power of overcoming fears. Whether you're a long-time fan or a newcomer to the franchise, "Scooby Doo and the Werewolves" is sure to leave you howling for more!

Frequently Asked Questions

What is the main plot of 'Scooby-Doo and the Werewolves'?

'Scooby-Doo and the Werewolves' follows Scooby-Doo and the Mystery Inc. team as they investigate a series of mysterious werewolf sightings in a small town, leading them to uncover the truth behind the supernatural events.

Who are the primary characters involved in the 'Scooby-Doo and the Werewolves' storyline?

The primary characters include Scooby-Doo, Shaggy, Fred, Daphne, and Velma, who all work together to solve the mystery of the werewolves.

What themes are explored in 'Scooby-Doo and the Werewolves'?

The film explores themes of friendship, teamwork, and the importance of facing one's fears, while also incorporating classic horror tropes in a humorous way.

How does 'Scooby-Doo and the Werewolves' differ from other Scooby-Doo adaptations?

'Scooby-Doo and the Werewolves' features a more supernatural angle with the werewolf concept, adding a unique twist to the familiar mystery-solving formula of the series.

What kind of reception did 'Scooby-Doo and the Werewolves' receive from fans?

'Scooby-Doo and the Werewolves' received a positive reception from fans for its entertaining blend of humor and horror, along with the nostalgic appeal of the beloved characters.

Find other PDF article:

<https://soc.up.edu.ph/06-link/Book?docid=tTA24-6910&title=anti-inflammatory-diet-for-acne.pdf>

Scooby Doo And The Werewolves

Scooby-Doo - Wikipedia

Scooby-Doo is an American media franchise owned by Warner Bros. Entertainment ...

Scooby-Doo! | Classic Cartoon Compilation

The gang needs some groovy tunes while their chased down by monsters! WB Kids is the ...

Scooby-Doo | Scoobypedia | Fandom

Scooby-Doo, also known as Scoobert "Scooby" Doo, is the eponymous iconic character ...

Scoob! (2020) - IMDb

May 15, 2020 · Scooby and the gang face their most challenging mystery ever: a plot to ...

[Watch Scooby-Doo Where Are You? Strea...](#)

Watch Scooby-Doo Where Are You? Free Online | 2 Seasons. The classic adventures of the ...

[Scooby-Doo - Wikipedia](#)

Scooby-Doo is an American media franchise owned by Warner Bros. Entertainment and created in 1969 by writers Joe Ruby and Ken Spears through their animated series, Scooby-Doo, Where Are You!, for Hanna-Barbera (which was absorbed into Warner Bros. Animation in 2001).

Scooby-Doo! | Classic Cartoon Compilation | Musical Chase ...

The gang needs some groovy tunes while their chased down by monsters! WB Kids is the home of all of your favorite clips featuring characters from the Looney Tunes, Scooby-Doo, Tom and Jerry and...

Scooby-Doo | Scoobypedia | Fandom

Scooby-Doo, also known as Scoobert "Scooby" Doo, is the eponymous iconic character from the Hanna-Barbera franchise. He is a Great Dane and the mascot of Mystery Inc., the team that solves mysteries using Scooby to sniff out clues.

Scoob! (2020) - IMDb

May 15, 2020 · Scooby and the gang face their most challenging mystery ever: a plot to unleash the ghost dog Cerberus upon the world. As they race to stop this dogpocalypse, the gang discovers that Scooby has an epic destiny greater than anyone imagined.

Watch Scooby-Doo Where Are You? Streaming Online - Tubi

Watch Scooby-Doo Where Are You? Free Online | 2 Seasons. The classic adventures of the lovable Great Dane and his human companions as they hunt for clues, hungry for a solution to mysteries and a snack.

Scooby-Doo | Cartoon, Characters, TV Shows, Movie, & Facts

Scooby-Doo, American animated cartoon series featuring the adventures of Scooby-Doo, a talking Great Dane, and his mystery-solving teenage companions.

Everything To Know About Scooby-Doo | Fandom

Scooby-Doo is a beloved animated universe that has been captivating audiences since its debut in 1969. The original series, "Scooby-Doo, Where Are You!" introduced us to the iconic Great Dane, Scooby-Doo, and his human companions - Fred, Daphne, Velma, and Shaggy.

Scooby-Doo (character) - Wikipedia

Writers Joe Ruby and Ken Spears created the original Scooby-Doo series, Scooby-Doo, Where Are You!, for Hanna-Barbera as a part of CBS 's 1969-1970 Saturday morning cartoon schedule.

Scooby-Doo (Full Episodes) - YouTube

Scooby-Doo (Full Episodes) by OggOne • Playlist • 227 videos • 2,074,559 views

Scoobypedia - Fandom

Follow the adventures of the Mystery Inc. gang in the all-new Scooby-Doo movie, Scooby-Doo! and Krypto, Too! The worlds of Scooby-Doo and the DC Superheroes collide when the Justice League disappears, and Mystery Inc. is called to Metropolis to investigate.

Uncover the mystery in "Scooby Doo and the Werewolves"! Join Scooby and the gang as they face thrilling adventures. Learn more about their spooky encounters!

[Back to Home](#)