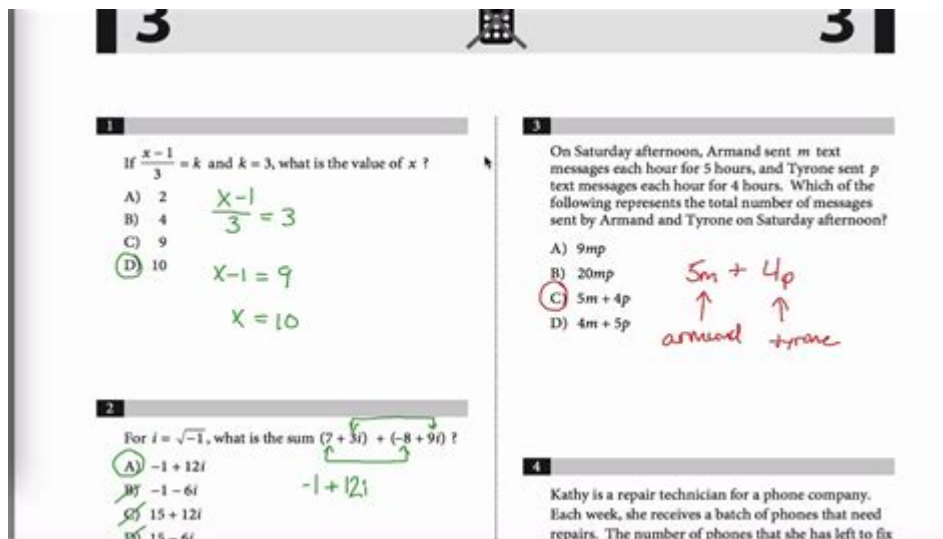


# Sat Sample Questions And Answers



**SAT SAMPLE QUESTIONS AND ANSWERS** ARE ESSENTIAL TOOLS FOR STUDENTS PREPARING FOR THE SAT, A STANDARDIZED TEST WIDELY USED FOR COLLEGE ADMISSIONS IN THE UNITED STATES. THE SAT ASSESSES A STUDENT'S READINESS FOR COLLEGE, MEASURING SKILLS IN AREAS SUCH AS READING, WRITING, AND MATHEMATICS. THIS ARTICLE DELVES INTO VARIOUS TYPES OF SAT QUESTIONS, PROVIDES SAMPLE QUESTIONS AND ANSWERS, AND OFFERS TIPS FOR EFFECTIVE PREPARATION.

## UNDERSTANDING THE SAT FORMAT

BEFORE DIVING INTO SAMPLE QUESTIONS, IT'S CRUCIAL TO UNDERSTAND THE STRUCTURE OF THE SAT. THE TEST IS DIVIDED INTO SEVERAL SECTIONS:

### 1. EVIDENCE-BASED READING AND WRITING (EBRW)

- **READING SECTION:** THIS SECTION INCLUDES MULTIPLE-CHOICE QUESTIONS BASED ON PASSAGES FROM LITERATURE, HISTORICAL DOCUMENTS, SOCIAL SCIENCES, AND NATURAL SCIENCES.
- **WRITING AND LANGUAGE SECTION:** THIS SECTION ASSESSES GRAMMAR, USAGE, AND CLARITY IN CONTEXT, FOCUSING ON REVISING AND EDITING WRITTEN PASSAGES.

### 2. MATH SECTION

- **NO CALCULATOR SECTION:** STUDENTS SOLVE PROBLEMS WITHOUT A CALCULATOR.
- **CALCULATOR SECTION:** STUDENTS CAN USE A CALCULATOR FOR THIS PART, WHICH INCLUDES MORE COMPLEX MATHEMATICAL PROBLEMS.

### 3. ESSAY (OPTIONAL)

THE SAT ESSAY IS OPTIONAL AND REQUIRES STUDENTS TO ANALYZE A GIVEN ARGUMENT. THOUGH NOT ALL COLLEGES REQUIRE IT, SOME MAY RECOMMEND IT.

# SAMPLE QUESTIONS AND ANSWERS

TO GIVE YOU A BETTER UNDERSTANDING OF WHAT TO EXPECT, HERE ARE SAMPLE QUESTIONS FROM EACH SECTION, ALONG WITH DETAILED ANSWERS AND EXPLANATIONS.

## EVIDENCE-BASED READING AND WRITING (EBRW)

SAMPLE READING QUESTION:

PASSAGE EXCERPT:

"DESPITE THE CHALLENGES POSED BY CLIMATE CHANGE, INNOVATIVE SOLUTIONS ARE BEING DEVELOPED TO MITIGATE ITS EFFECTS. THESE SOLUTIONS RANGE FROM RENEWABLE ENERGY SOURCES TO ADVANCED AGRICULTURAL PRACTICES."

QUESTION:

WHAT IS THE PRIMARY PURPOSE OF THE PASSAGE?

- A) TO ARGUE AGAINST CLIMATE CHANGE
- B) TO EMPHASIZE THE IMPORTANCE OF RENEWABLE ENERGY
- C) TO INFORM READERS ABOUT SOLUTIONS TO CLIMATE CHANGE
- D) TO DISCUSS THE CHALLENGES OF CLIMATE CHANGE

ANSWER: C) TO INFORM READERS ABOUT SOLUTIONS TO CLIMATE CHANGE.

EXPLANATION: THE PASSAGE DISCUSSES VARIOUS INNOVATIVE SOLUTIONS BEING DEVELOPED TO ADDRESS CLIMATE CHANGE, MAKING THE PRIMARY PURPOSE INFORMATIVE.

SAMPLE WRITING AND LANGUAGE QUESTION:

PASSAGE EXCERPT:

"THE COMMITTEE HAVE DECIDED TO POSTPONE THE MEETING UNTIL NEXT WEEK."

QUESTION:

WHICH OF THE FOLLOWING CORRECTIONS IMPROVES THE SENTENCE?

- A) THE COMMITTEE HAS DECIDED TO POSTPONE THE MEETING UNTIL NEXT WEEK.
- B) THE COMMITTEE HAVE DECIDED TO POSTPONING THE MEETING UNTIL NEXT WEEK.
- C) THE COMMITTEES HAVE DECIDED TO POSTPONE THE MEETING UNTIL NEXT WEEK.
- D) THE COMMITTEE HAS DECIDED TO POSTPONED THE MEETING UNTIL NEXT WEEK.

ANSWER: A) THE COMMITTEE HAS DECIDED TO POSTPONE THE MEETING UNTIL NEXT WEEK.

EXPLANATION: THE SUBJECT "COMMITTEE" IS A COLLECTIVE NOUN AND SHOULD BE TREATED AS A SINGULAR ENTITY, REQUIRING "HAS" INSTEAD OF "HAVE."

## MATH SECTION

SAMPLE NO CALCULATOR QUESTION:

QUESTION:

IF  $x + 5 = 12$ , WHAT IS THE VALUE OF  $x$ ?

- A) 5
- B) 7
- C) 12
- D) 17

ANSWER: B) 7

EXPLANATION: TO SOLVE FOR  $x$ , SUBTRACT 5 FROM BOTH SIDES:  $x = 12 - 5$ , WHICH GIVES  $x = 7$ .

SAMPLE CALCULATOR QUESTION:

QUESTION:

A RECTANGLE HAS A LENGTH OF 8 INCHES AND A WIDTH OF 3 INCHES. WHAT IS THE AREA OF THE RECTANGLE?

- A) 11 SQUARE INCHES
- B) 24 SQUARE INCHES
- C) 32 SQUARE INCHES
- D) 40 SQUARE INCHES

ANSWER: B) 24 SQUARE INCHES

EXPLANATION: THE AREA OF A RECTANGLE IS CALCULATED BY MULTIPLYING LENGTH BY WIDTH. SO,  $\text{Area} = 8 \text{ INCHES} \times 3 \text{ INCHES} = 24 \text{ SQUARE INCHES}$ .

## ESSAY (OPTIONAL)

ESSAY PROMPT SAMPLE:

READ THE FOLLOWING ARGUMENT AND ANALYZE HOW THE AUTHOR BUILDS AN ARGUMENT TO PERSUADE AN AUDIENCE.

ARGUMENT EXCERPT:

"SCHOOLS SHOULD PRIORITIZE MENTAL HEALTH EDUCATION AS IT EQUIPS STUDENTS WITH THE TOOLS TO MANAGE STRESS AND IMPROVE ACADEMIC PERFORMANCE."

SAMPLE RESPONSE OUTLINE:

1. INTRODUCTION
  - INTRODUCE THE TOPIC OF MENTAL HEALTH EDUCATION.
  - STATE THE THESIS: THE AUTHOR EFFECTIVELY ARGUES FOR THE IMPORTANCE OF MENTAL HEALTH EDUCATION IN SCHOOLS.
2. BODY PARAGRAPH 1: USE OF EVIDENCE
  - DISCUSS HOW THE AUTHOR USES STATISTICS ON STRESS IN STUDENTS.
  - EXPLAIN HOW THIS EVIDENCE SUPPORTS THE CLAIM THAT MENTAL HEALTH EDUCATION CAN IMPROVE ACADEMIC PERFORMANCE.
3. BODY PARAGRAPH 2: EMOTIONAL APPEAL
  - ANALYZE THE EMOTIONAL APPEAL MADE BY THE AUTHOR.
  - DISCUSS HOW PERSONAL ANECDOTES OR TESTIMONIALS FROM STUDENTS ENHANCE THE ARGUMENT.
4. BODY PARAGRAPH 3: COUNTERARGUMENTS
  - ADDRESS POTENTIAL COUNTERARGUMENTS PRESENTED IN THE EXCERPT.
  - EXPLAIN HOW THE AUTHOR REFUTES THESE COUNTERARGUMENTS EFFECTIVELY.
5. CONCLUSION
  - SUMMARIZE THE MAIN POINTS OF THE ANALYSIS.
  - RESTATE THE IMPORTANCE OF MENTAL HEALTH EDUCATION AS PRESENTED BY THE AUTHOR.

## TIPS FOR SAT PREPARATION

PREPARING FOR THE SAT CAN SEEM DAUNTING, BUT WITH EFFECTIVE STRATEGIES, STUDENTS CAN MAXIMIZE THEIR CHANCES OF SUCCESS.

## 1. FAMILIARIZE YOURSELF WITH THE TEST

- REVIEW THE TEST FORMAT AND TYPES OF QUESTIONS.
- TAKE PRACTICE TESTS TO GET USED TO THE TIMING AND PRESSURE OF THE EXAM.

## 2. CREATE A STUDY SCHEDULE

- ALLOCATE SPECIFIC TIMES EACH WEEK FOR SAT STUDY.
- BALANCE YOUR STUDY SESSIONS BETWEEN READING, WRITING, AND MATH.

## 3. USE QUALITY STUDY MATERIALS

- CONSIDER USING OFFICIAL SAT PREP BOOKS AND ONLINE RESOURCES.
- JOIN STUDY GROUPS OR FIND A TUTOR FOR ADDITIONAL HELP.

## 4. PRACTICE, PRACTICE, PRACTICE

- TAKE AS MANY PRACTICE TESTS AS POSSIBLE, ESPECIALLY UNDER TIMED CONDITIONS.
- REVIEW YOUR ANSWERS TO UNDERSTAND YOUR MISTAKES AND LEARN FROM THEM.

## 5. STAY HEALTHY AND MANAGE STRESS

- ENSURE YOU MAINTAIN A BALANCED DIET, EXERCISE, AND GET ENOUGH SLEEP LEADING UP TO THE TEST.
- USE STRESS MANAGEMENT TECHNIQUES, SUCH AS MINDFULNESS OR DEEP-BREATHING EXERCISES.

## CONCLUSION

IN CONCLUSION, SAT SAMPLE QUESTIONS AND ANSWERS PROVIDE INVALUABLE INSIGHT INTO WHAT STUDENTS CAN EXPECT ON THE EXAM. BY UNDERSTANDING THE TEST FORMAT, PRACTICING WITH SAMPLE QUESTIONS, AND EMPLOYING EFFECTIVE STUDY STRATEGIES, STUDENTS CAN ENHANCE THEIR READINESS FOR THE SAT. WITH DEDICATION AND PREPARATION, ACHIEVING A COMPETITIVE SCORE IS WITHIN REACH, PAVING THE WAY FOR FUTURE ACADEMIC SUCCESS.

## FREQUENTLY ASKED QUESTIONS

### WHAT TYPES OF QUESTIONS ARE INCLUDED IN SAT SAMPLE QUESTIONS?

SAT SAMPLE QUESTIONS TYPICALLY INCLUDE MULTIPLE-CHOICE QUESTIONS IN READING, WRITING AND LANGUAGE, MATH (WITH AND WITHOUT A CALCULATOR), AND AN OPTIONAL ESSAY PROMPT.

### WHERE CAN I FIND OFFICIAL SAT SAMPLE QUESTIONS?

OFFICIAL SAT SAMPLE QUESTIONS CAN BE FOUND ON THE COLLEGE BOARD'S WEBSITE, WHICH OFFERS FREE RESOURCES INCLUDING PRACTICE TESTS AND SAMPLE QUESTIONS.

### HOW DO SAT SAMPLE QUESTIONS HELP IN PREPARING FOR THE TEST?

SAT SAMPLE QUESTIONS HELP STUDENTS FAMILIARIZE THEMSELVES WITH THE TEST FORMAT, QUESTION TYPES, AND TIME MANAGEMENT, THEREBY IMPROVING THEIR PERFORMANCE ON THE ACTUAL EXAM.

## ARE SAT SAMPLE QUESTIONS REPRESENTATIVE OF THE ACTUAL TEST?

YES, SAT SAMPLE QUESTIONS ARE DESIGNED TO BE REPRESENTATIVE OF WHAT STUDENTS WILL ENCOUNTER ON THE ACTUAL TEST, COVERING SIMILAR CONTENT AND DIFFICULTY LEVELS.

## CAN I FIND SAT SAMPLE QUESTIONS FOR FREE?

YES, MANY WEBSITES, INCLUDING THE COLLEGE BOARD AND EDUCATIONAL PLATFORMS LIKE KHAN ACADEMY, OFFER FREE SAT SAMPLE QUESTIONS AND PRACTICE TESTS.

## HOW CAN I EFFECTIVELY USE SAT SAMPLE QUESTIONS FOR PRACTICE?

TO EFFECTIVELY USE SAT SAMPLE QUESTIONS, TAKE TIMED PRACTICE TESTS, REVIEW THE EXPLANATIONS FOR BOTH CORRECT AND INCORRECT ANSWERS, AND FOCUS ON AREAS WHERE YOU STRUGGLE.

## WHAT IS THE BENEFIT OF REVIEWING ANSWERS TO SAT SAMPLE QUESTIONS?

REVIEWING ANSWERS HELPS IDENTIFY STRENGTHS AND WEAKNESSES IN KNOWLEDGE AND TEST-TAKING STRATEGIES, ALLOWING STUDENTS TO ADJUST THEIR STUDY PLANS ACCORDINGLY.

Find other PDF article:

<https://soc.up.edu.ph/29-scan/pdf?trackid=ZFe38-2323&title=how-is-math-used-in-everyday-life.pdf>

## Sat Sample Questions And Answers

**sat** -

SAT Scholastic Assessment Test (College Board CB) ACT (American College Test) " " ...

86 SAT 700+ || TD

Dec 13, 2021 · SAT SAT 1530 SAT TA ...

FAT SAT? -

SAT 3. SAT ...

A-level IB AP SAT ACT -

SAT Scholastic Aptitude Test 2016 SAT 1600 ...

SAT -

46 SAT SAT Essay SAT ...

**SAT** -

SAT SAT SAT

**SAT** **SAT** -

SAT “” College Board ...

**SAT** -

Jun 17, 2025 · SAT SAT 1 ...

**SIT** **SAT** ...

SAT M1500 2015 SAT “” ...

**TOP30** **SAT**? -

SAT SAT ...

**sat** -

SAT Scholastic Assessment Test (College Board CB) ...

8 6 SAT 700+ || TD

Dec 13, 2021 · SAT SAT 1530 ...

**FAT** **SAT**? -

SAT 3. SAT ...

*A-level* *IB* *AP* **SAT** *ACT* -

SAT Scholastic Aptitude Test 2016 SAT ...

**SAT** -

46 SAT SAT Essay SAT ...

Unlock your potential with our SAT sample questions and answers! Boost your prep strategy and ace the exam. Learn more to enhance your study skills today!

[Back to Home](#)