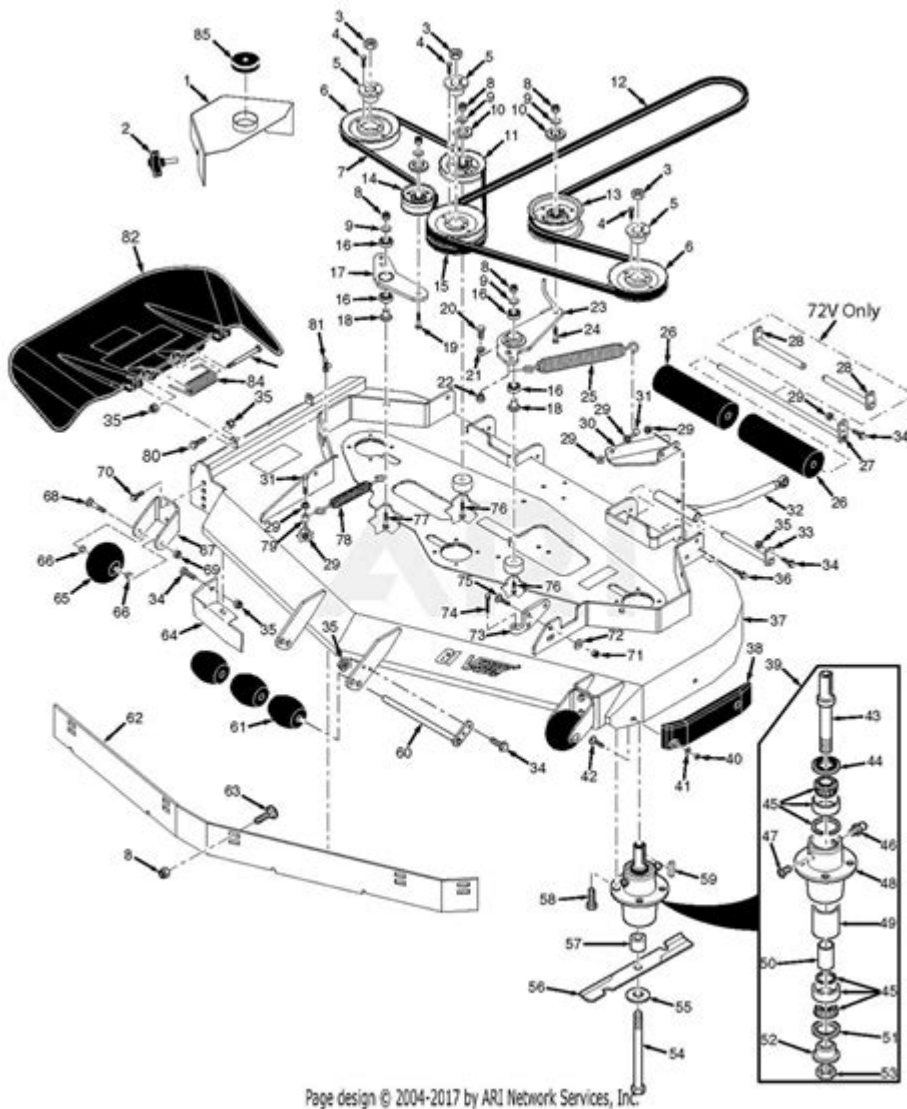


Scag V Ride 2 Belt Diagram



Scag v Ride 2 Belt Diagram is an essential component for understanding the operation and maintenance of Scag mowers equipped with the Ride 2 system. The belt diagram is crucial for both novice users and seasoned mechanics, as it illustrates the routing of the drive belts that power the mower's cutting deck and propel the machine forward. This article will explore the significance of the Scag v Ride 2 belt diagram, how to interpret it, and practical tips for maintaining your mower's belts.

Understanding the Scag v Ride 2 System

The Scag v Ride 2 is a popular line of zero-turn mowers designed for commercial use. Known for their durability and efficiency, these mowers feature a unique drive system that allows for easy maneuverability and precise cutting. Understanding how the belt system works is fundamental for anyone looking to maintain or repair this type of mower.

Components of the Scag v Ride 2 Mower

To fully grasp the importance of the belt diagram, it's vital to know the key components that work together within the Scag v Ride 2 system:

1. Engine: Powers the entire mower and drives the belt system.
2. Transmission: Transfers power from the engine to the wheels.
3. Cutting Deck: Houses the blades responsible for mowing grass.
4. Belts: These are the heart of the power transmission, linking the engine, transmission, and cutting deck.
5. Pulleys: Redirect the belt and facilitate the movement of the mower.

Each of these components plays a pivotal role in the overall functioning of the mower, and the belt diagram helps visualize how they connect and operate together.

Importance of the Belt Diagram

The Scag v Ride 2 belt diagram serves several functions:

- Visual Guide: It provides a clear visual representation of how the belts should be routed.
- Maintenance Reference: Helps users identify if the belts are installed correctly, which is crucial for optimal performance.
- Troubleshooting Tool: Assists in diagnosing issues related to belt wear or misalignment.
- Installation Aid: When replacing belts, the diagram acts as a guide to ensure proper installation.

How to Read the Belt Diagram

Interpreting the belt diagram is straightforward, but it does require a bit of familiarity with the mower's components. Here are some steps to help you read the diagram effectively:

1. Locate Key Components: Identify all parts depicted in the diagram, including the engine, transmission, pulleys, and cutting deck.
2. Follow Belt Paths: Observe the paths that the belts take from one component to another. This will often include loops around pulleys and connections to specific mechanisms.
3. Identify Belt Types: Different belts may be indicated (e.g., drive belt, deck belt), so take note of these distinctions.
4. Check for Labels: Some diagrams will include labels or arrows indicating the direction of movement, which can be particularly helpful during installation.

Types of Belts in the Scag v Ride 2

Understanding the types of belts used in the Scag v Ride 2 system can help you make informed decisions when it comes to maintenance or replacement.

1. Drive Belt

- Function: Transfers power from the engine to the transmission.
- Material: Typically made from durable rubber to withstand tension and friction.
- Signs of Wear: Cracks, fraying, or glazing can indicate that the drive belt needs replacement.

2. Deck Belt

- Function: Powers the blades on the cutting deck.
- Material: Similar to the drive belt but designed to handle the additional stress from the blades.
- Signs of Wear: Look for similar signs as the drive belt, plus any unusual noises while the blades are engaged.

3. Idler Belt

- **Function:** Helps maintain tension on the drive and deck belts, ensuring they function correctly.
- **Material:** Typically less robust than the primary belts but still made from durable materials.
- **Signs of Wear:** A loose idler belt can lead to slippage or reduced performance.

Maintenance Tips for Your Scag v Ride 2 Belts

Proper maintenance of the belts in your Scag v Ride 2 mower can extend their lifespan and ensure optimal performance. Consider the following tips:

- 1. Regular Inspection:** Check the belts for signs of wear or damage at least once a month.
- 2. Keep Clean:** Ensure the belts and pulleys are free from debris, grass, and oil, which can cause slippage and premature wear.

- 3. Check Tension:** Ensure that the belts are properly tensioned. Too loose can lead to slipping, while too tight can cause stress on components.
- 4. Follow Manufacturer Guidelines:** Always refer to the owner's manual for specific maintenance schedules and recommendations.
- 5. Use OEM Parts:** When replacing belts, opt for Original Equipment Manufacturer (OEM) parts to ensure compatibility and longevity.

Troubleshooting Common Belt Issues

Even with proper maintenance, issues can arise. Here are some common problems and their solutions:

1. Slipping Belts

- Causes:** Worn belts, improper tension, or dirty pulleys.
- Solutions:** Inspect and replace worn belts, adjust tension, and clean pulleys.

2. Broken Belts

- Causes:** Excessive wear, improper installation, or misalignment.
- Solutions:** Inspect the belt diagram for correct routing, replace the broken belt, and check for any obstructions.

3. Noisy Operation

- Causes: Worn belts or misaligned pulleys.**
- Solutions: Inspect belts for fraying and check pulley alignment. Replace if necessary.**

Conclusion

The Scag v Ride 2 belt diagram is an invaluable resource for anyone using or maintaining Scag mowers. Understanding the layout and function of the belts can help ensure that your mower operates efficiently and effectively. By following proper maintenance protocols, you can prolong the life of your mower's belts and avoid costly repairs. Whether you are a professional landscaper or a weekend gardener, knowing how to read and utilize the belt diagram will empower you to keep your mower in top shape, ensuring a pristine lawn and a reliable machine for years to come.

Frequently Asked Questions

What is the purpose of the SCAG V Ride 2 belt diagram?

The SCAG V Ride 2 belt diagram provides a detailed illustration of the mower's belt routing, which is essential for proper installation and maintenance of the mower's drive system.

Where can I find the SCAG V Ride 2 belt diagram?

The SCAG V Ride 2 belt diagram can typically be found in the owner's manual, on the SCAG website, or through

authorized SCAG dealers.

How often should I check the belts on my SCAG V Ride 2?

It's recommended to check the belts on your SCAG V Ride 2 before each mowing session and perform a thorough inspection at least once a month during the mowing season.

What tools are needed to replace the belts on a SCAG V Ride 2?

To replace the belts on a SCAG V Ride 2, you typically need basic hand tools like wrenches, sockets, and possibly a belt removal tool for easier access.

What are the signs of a worn-out belt on the SCAG V Ride 2?

Signs of a worn-out belt on the SCAG V Ride 2 include fraying, cracking, slipping, or if the mower is not cutting evenly or losing power.

Can I use a generic belt instead of the OEM belt for my SCAG V Ride 2?

While it is possible to use a generic belt, it is highly recommended to use the OEM belt to ensure optimal performance and longevity of your SCAG V Ride 2.

What should I do if the belt keeps slipping off the pulleys?

If the belt keeps slipping off the pulleys, check for proper alignment, inspect for worn pulleys, and ensure that the belt tension is correctly adjusted according to the belt diagram.

Is the SCAG V Ride 2 belt diagram the same for all models?

No, the SCAG V Ride 2 belt diagram can vary between different models and production years, so it's important to refer to the specific diagram for your model.

Find other PDF article:

<https://soc.up.edu.ph/57-chart/files?ID=LpK84-6385&title=teaching-strategies-for-children-with-adhd.pdf>

Scag V Ride 2 Belt Diagram

Facebook - log in or sign up

Log into Facebook to start sharing and connecting with your friends, family, and people you know.

Facebook

Facebook is not available on this browser To continue using Facebook, get one of the browsers below. Learn more Chrome Firefox Edge + Meta © 2025

Sign Up for Facebook

Sign up for Facebook and find your friends. Create an account to start sharing photos and updates with people you know. It's easy to register.

Facebook Marketplace: Buy and Sell Items Locally or Shipped | Facebook

1 day ago · Buy or sell new and used items easily on

Facebook Marketplace, locally or from businesses. Find great deals on new items shipped from stores to your door.

Log into your Facebook account | Facebook Help Center
How to log into your Facebook account using your email, phone number or username.

Log Into Facebook

Log into Facebook to start sharing and connecting with your friends, family, and people you know.

Create a Facebook account | Facebook Help Center
You can create a new account from the Facebook app or Facebook.com. If you already have an existing Instagram account, you can use this account to create a new Facebook account.

Facebook on the App Store

Whether you're thrifting gear, showing reels to that group who gets it, or sharing laughs over fun images reimagined by AI, Facebook helps you make things happen like no other social network.

Facebook

Facebook ... Facebook

Account Recovery | Facebook Help Center

Help Center English (US) Using Facebook Login, Recovery and Security Login and Password Account Recovery

Download Adobe Acrobat Reader: Free PDF viewer
Download free Adobe Acrobat Reader software for your

Windows, Mac OS and Android devices to view, print, and comment on PDF documents.

Acrobat online sign in | Login to Acrobat | Adobe Acrobat

Adobe Acrobat online services let you work with PDFs in any browser. Create, convert, compress, edit, fill, sign, and share files. Sign in to get started.

Get Acrobat Reader, the original PDF solution. - Adobe
Adobe Acrobat Reader software is the free, trusted global standard for viewing, printing, signing, sharing, and annotating PDFs. It's the only PDF viewer that can open and interact with all ...

Adobe Acrobat

Extensive export options Scan to PDF E-signature management Start Acrobat Pro trial Already have an account? Sign in

Download Adobe Acrobat

Jun 2, 2025 · You can download and install a free version of Adobe Acrobat Reader to view, collaborate on, and annotate PDF files. Purchase an Adobe Acrobat Pro or Adobe Acrobat ...

Adobe Acrobat | Create, edit, and review PDFs

What is Adobe Acrobat? Acrobat is a productivity and collaboration PDF solution that includes Acrobat desktop software, Acrobat online tools, the Acrobat Reader mobile app, and the ...

Download Adobe Acrobat Pro: Full PDF software | Adobe Acrobat

Acrobat is a productivity and collaboration PDF solution that includes Acrobat desktop software, Acrobat online tools, the Acrobat Reader mobile app, and the Adobe Scan app — all so you ...

PDF online: From the creator of PDFs | Adobe Acrobat
Do your best work online with Adobe Acrobat PDF online services. Use PDF tools in any browser.

Adobe Acrobat Pro free download & trial | Adobe Acrobat

Download a free trial of a fully functional version of Adobe Acrobat Pro. Discover the many benefits of the Acrobat Pro PDF editor.

Adobe Acrobat Standard vs Pro: compare Acrobat versions | Adobe Acrobat
Compare Acrobat versions and explore the different available features across Standard, Pro, and more. Find the right PDF solution to fit your document needs!

Explore the Scag V Ride 2 belt diagram for efficient maintenance and repair. Learn more about optimal performance and troubleshooting tips today!

[Back to Home](#)