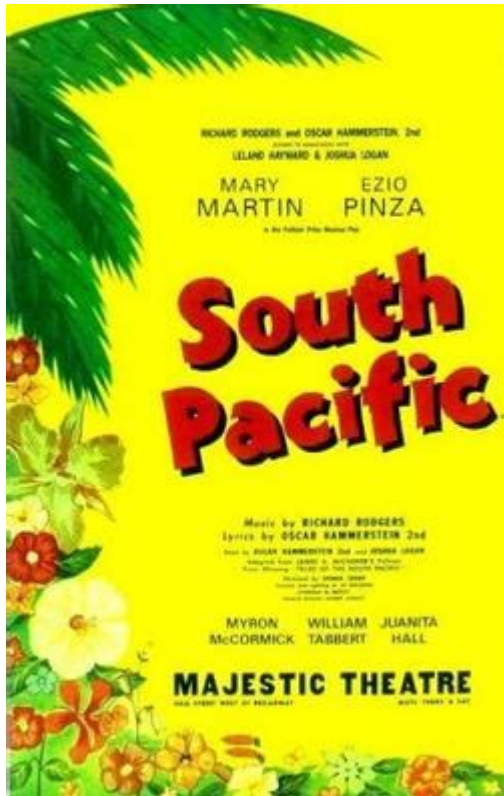


Script Musical South Pacific



Script musical South Pacific is a timeless classic that has left an indelible mark on the world of musical theatre. Adapted from James A. Michener's Pulitzer Prize-winning book "Tales of the South Pacific," this enchanting musical was composed by Richard Rodgers, with lyrics by Oscar Hammerstein II. First premiering on Broadway in 1949, "South Pacific" explores themes of love, war, and the complexities of racial prejudice against the backdrop of World War II in the South Pacific. Its powerful narrative and memorable score have ensured its place in the pantheon of musical theatre.

Overview of South Pacific

"South Pacific" is set on a fictional island during World War II and weaves together the stories of several characters, each grappling with their own struggles and relationships amidst the chaos of war. The musical features a rich tapestry of emotions, ranging from romance and longing to prejudice and acceptance.

Characters

The characters in "South Pacific" are vividly drawn and serve as conduits for the musical's themes. Some of the key characters include:

1. Nellie Forbush - A young American nurse from Little Rock, Arkansas, who falls in love with

Emile de Becque.

2. Emile de Becque - A wealthy French planter who is deeply in love with Nellie but is haunted by his past.

3. Lt. Joseph Cable - A U.S. Navy officer who struggles with his feelings for Liat, a native Polynesian girl.

4. Liat - The daughter of Bloody Mary, a native woman who embodies the themes of love and cultural conflict.

5. Bloody Mary - A savvy and resourceful native woman who seeks to secure a better future for her daughter.

6. Billis - A fun-loving sailor who provides comic relief while also facing his own challenges.

Plot Summary

The narrative of "South Pacific" unfolds through intertwining stories, each providing a unique perspective on love and the impact of war.

Act 1

The musical opens on a tropical island where American soldiers and nurses are stationed. Nellie Forbush is introduced as a spirited nurse who is eager to make a difference. She meets Emile de Becque, and their romance blossoms, but Nellie struggles with her feelings when she learns about Emile's past—a past that includes a deceased Polynesian wife and mixed-race children.

Meanwhile, Lt. Joseph Cable arrives on the island and becomes enamored with Liat, but he wrestles with his own prejudices regarding her background. The act culminates with the powerful song "Some Enchanted Evening," which reflects the transformative power of love.

Act 2

In the second act, the emotional stakes heighten. Nellie's prejudices come to the forefront, as she grapples with her feelings for Emile and the societal norms that dictate her reactions. She ultimately rejects Emile, causing him heartbreak.

At the same time, Joseph Cable's internal conflict leads to his decision to return to the United States, leaving Liat heartbroken. The act explores themes of acceptance, cultural differences, and the harsh realities of war. The musical concludes with a message of hope and redemption as characters confront their biases and seek to embrace love in its many forms.

Musical Score

The score of "South Pacific" is one of its defining features, with several songs that have

become standards in musical theatre. Some of the most notable numbers include:

- "Some Enchanted Evening" - A romantic ballad that expresses the longing and magic of love.
- "I'm Gonna Wash That Man Right Outa My Hair" - A spirited anthem of empowerment as Nellie decides to move on from her heartache.
- "Bali Ha'i" - A haunting melody that evokes the enchanting allure of the island and its culture.
- "Younger Than Springtime" - A tender love song sung by Lt. Cable, capturing the innocence and beauty of newfound love.
- "There Is Nothin' Like a Dame" - A lively, comedic number sung by the sailors, reflecting their camaraderie and longing.

The music seamlessly integrates with the narrative, enhancing the emotional depth of the characters and their experiences.

Themes and Social Commentary

"South Pacific" is not just a love story; it also explores significant social themes that resonate even today. Some of the most prominent themes include:

Racial Prejudice

The musical confronts the issue of racial prejudice head-on. The relationship between Joseph Cable and Liat serves as a poignant exploration of the social barriers that exist due to race and ethnicity. The characters' struggles highlight the absurdity of prejudice and the need for acceptance and understanding.

Love and Acceptance

At its core, "South Pacific" is a story about love—romantic love, familial love, and self-love. The characters learn to confront their biases and accept one another despite their differences. The journey toward acceptance is fraught with challenges, but ultimately leads to personal growth and redemption.

The Impact of War

Set against the backdrop of World War II, the musical also comments on the psychological toll of war. The characters are shaped by their experiences, and the narrative illustrates how war can bring out both the best and the worst in people. The desire for connection and understanding is a powerful antidote to the horrors of conflict.

Legacy and Adaptations

Since its debut, "South Pacific" has enjoyed numerous revivals and adaptations, solidifying its status as a classic. The original Broadway production won ten Tony Awards, including Best Musical, and has been praised for its innovative storytelling and unforgettable music.

Film Adaptation

In 1958, "South Pacific" was adapted into a film, which further popularized the musical. The film brought the story to a wider audience and featured many of the original cast members, including Mitzi Gaynor as Nellie Forbush and Rossano Brazzi as Emile de Becque. The lush cinematography and vibrant performances captured the essence of the musical, solidifying its place in cinematic history.

Revival Productions

Throughout the years, "South Pacific" has seen several successful revivals, including a notable 2008 Broadway revival directed by Bartlett Sher. This production received critical acclaim and won the Tony Award for Best Revival of a Musical. The revival emphasized the themes of love and acceptance, resonating with audiences in a contemporary context.

Conclusion

The script musical "South Pacific" remains a powerful exploration of love, prejudice, and the human experience. Its rich characters, memorable music, and poignant themes continue to resonate with audiences around the world. As society grapples with issues of race and acceptance, the lessons embodied in "South Pacific" are more relevant than ever. This timeless classic serves as a reminder that love knows no boundaries and that understanding and acceptance can triumph over prejudice. With its enduring legacy, "South Pacific" will continue to inspire generations to come.

Frequently Asked Questions

What is the main theme of the musical 'South Pacific'?

The main theme of 'South Pacific' revolves around the complexities of love and racism, set against the backdrop of World War II in the South Pacific.

Who wrote the music and lyrics for 'South Pacific'?

'South Pacific' was written by Richard Rodgers (music) and Oscar Hammerstein II (lyrics).

Which famous songs are featured in 'South Pacific'?

Some of the famous songs from 'South Pacific' include 'Some Enchanted Evening', 'I'm Gonna Wash That Man Right Outa My Hair', and 'Bali Ha'i'.

What is the significance of the character Nellie Forbush in 'South Pacific'?

Nellie Forbush is significant as she represents the struggles of personal prejudice and growth, as she confronts her feelings for Emile de Becque, a French planter with a past involving a Polynesian woman.

How does 'South Pacific' address the issue of racial discrimination?

'South Pacific' addresses racial discrimination through the storyline of Lieutenant Cable, who grapples with his feelings for a Polynesian woman and the societal prejudices of his time.

What historical context does 'South Pacific' provide?

'South Pacific' provides historical context by depicting life on a military base during World War II, highlighting the cultural interactions and conflicts that arose during the war.

Has 'South Pacific' won any major awards?

'South Pacific' has won several major awards, including the Tony Award for Best Musical in 1949 and the Pulitzer Prize for Drama in 1950.

Find other PDF article:

<https://soc.up.edu.ph/56-quote/files?docid=eNw12-9629&title=study-guide-chemical-changes-in-matter-answers.pdf>

Script Musical South Pacific

script -

script ...

Cannot Install Any Chrome Extensions - "Could Not Load ...

This help content & informationGeneral Help Center experienceSearch

Subresource integrity problem with Recaptcha script - Google ...

Help Center Community Search Console ©2025 Google Privacy Policy Terms of Service Community Policy Community Overview Enable Dark Mode

Open Apps Script yields Bad Request Error 400

Feb 11, 2023 · When attempting to access the apps script for a Sheet from within the Extensions menu, I get "too many redirects" followed by Bad Request Error 400. I've tried clearing cookies ...

Is LegitScript certification necessary to place ads? - Google Help

This help content & informationGeneral Help Center experienceEnable Dark Mode

Can't load Apps Script Editor from google sheets: "Google Docs ...

Feb 22, 2022 · Help Center Community Gemini in Docs Editors Google Docs Editors Privacy Policy Terms of Service Community Policy Community Overview This help content & ...

matlabword ...

Matlab PDFWordHTMLLaTeX

A JavaScript error occurred in main process? -

Win %
appdata % ...

-

thgJES XSS payload ...

? -

script -

script ...

Cannot Install Any Chrome Extensions - "Could Not Load ...

This help content & informationGeneral Help Center experienceSearch

Subresource integrity problem with Recaptcha script - Google ...

Help Center Community Search Console ©2025 Google Privacy Policy Terms of Service Community Policy Community Overview Enable Dark Mode

Open Apps Script yields Bad Request Error 400

Feb 11, 2023 · When attempting to access the apps script for a Sheet from within the Extensions menu, I get "too many redirects" followed by Bad Request Error 400. I've tried clearing cookies ...

Is LegitScript certification necessary to place ads? - Google Help

This help content & informationGeneral Help Center experienceEnable Dark Mode

Can't load Apps Script Editor from google sheets: "Google Docs ...

Feb 22, 2022 · Help Center Community Gemini in Docs Editors Google Docs Editors Privacy Policy Terms of Service Community Policy Community Overview This help content & ...

matlabword ...

Matlab PDFWordHTMLLaTeX

A JavaScript error occurred in main process? -

Win %

appdata % ...

-
thgJES XSS payload ...

? -

Explore the captivating script musical South Pacific! Dive into its themes

[Back to Home](#)