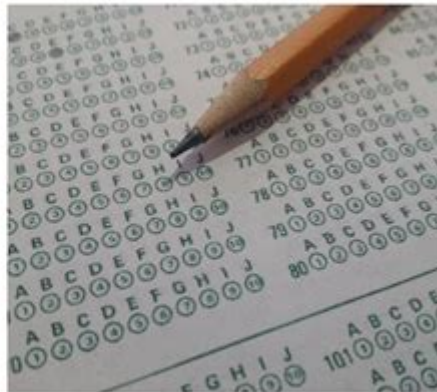


Sat Math Calculator Section

The SAT®
Math Test – Calculator
55 MINUTES, 38 QUESTIONS



© College Board SAT

SAT Math Calculator Section is a critical component of the SAT exam that can significantly influence a student's overall score. It allows students to utilize a calculator, providing them an advantage when tackling complex mathematical problems. Understanding the structure, content, and strategies for this section is essential for students aiming to maximize their performance on the SAT. This article will delve into everything you need to know about the SAT Math Calculator Section, including its format, types of questions, effective strategies, and tips for preparation.

Understanding the SAT Math Calculator Section

The SAT Math section is divided into two parts: one where calculators are not permitted and the other where calculators can be used. The SAT Math Calculator Section consists of 38 questions, which include a mix of multiple-choice and grid-in questions. This section tests a wide range of mathematical concepts, from algebra and problem-solving to advanced mathematics.

Format of the SAT Math Calculator Section

The SAT Math Calculator Section has a specific format that students should be familiar with:

- Total Questions: 38
- Question Types:
 - Multiple-choice questions (four answer choices)
 - Grid-in questions (students provide their own answers)
- Time Allotted: 55 minutes
- Calculator Usage: Allowed for all questions in this section

Topics Covered in the SAT Math Calculator Section

The SAT Math Calculator Section covers various mathematical topics. The questions are designed to assess a student's ability to solve problems using mathematical concepts. The primary areas include:

1. Heart of Algebra: Focuses on linear equations, inequalities, and functions.
2. Problem Solving and Data Analysis: Involves understanding ratios, percentages, and interpreting data from graphs and tables.
3. Passport to Advanced Math: Deals with complex equations and functions, assessing skills necessary for higher level math.
4. Additional Topics: Includes geometry, basic trigonometry, and complex numbers.

Strategies for Success in the SAT Math Calculator Section

To perform well in the SAT Math Calculator Section, students should employ effective strategies. Here are some tips to help maximize your score:

1. Familiarize Yourself with Your Calculator

- Know Your Calculator: Whether you use a graphing calculator, scientific calculator, or a basic one, ensure you are comfortable with its functions.
- Practice with the Calculator: Use your calculator during practice tests to get accustomed to how it can help you solve problems quickly.

2. Read Each Question Carefully

- Understand the Problem: Take a moment to read and comprehend what is being asked before jumping into calculations.
- Identify Keywords: Look for keywords that indicate what operations are needed (e.g., "total," "difference," "product").

3. Use Process of Elimination for Multiple-Choice Questions

- Eliminate Obvious Wrong Answers: Narrow down your choices by eliminating answers that are clearly incorrect.
- Guess Strategically: If you can eliminate at least one option, your chances of guessing correctly improve significantly.

4. Show Your Work on Grid-in Questions

- Organize Your Work: Showing your work can help you avoid mistakes and makes it easier to trace back your steps if needed.
- Double-Check Your Answers: Before entering your answer, verify it to ensure accuracy.

5. Manage Your Time Wisely

- Pace Yourself: With 38 questions in 55 minutes, aim to spend about 1.5 minutes per question.
- Mark and Move On: If you find a question too challenging, mark it and move on, returning to it if time permits.

Preparing for the SAT Math Calculator Section

Preparation is key to success in the SAT Math Calculator Section. Here are some effective study techniques:

1. Use Official SAT Practice Materials

- Practice Tests: Take full-length practice tests under timed conditions to simulate the actual exam experience.
- Review Answer Explanations: After completing practice questions, review explanations for both correct and incorrect answers to understand the reasoning behind them.

2. Focus on Weak Areas

- Identify Weaknesses: After taking practice tests, analyze which areas you struggled with and focus your study efforts there.
- Targeted Practice: Use online resources, textbooks, or tutoring for additional practice on specific topics.

3. Join Study Groups or Classes

- Collaborate with Peers: Joining a study group can provide motivation and new perspectives on problem-solving.
- Enroll in Prep Courses: Consider enrolling in SAT prep courses that focus specifically on the Math section.

4. Utilize Online Resources and Apps

- Math Apps: There are several apps designed to help students prepare for the SAT, offering practice questions and video explanations.
- Online Forums: Engage in online educational forums where you can ask questions and share insights with other students.

Conclusion

The **SAT Math Calculator Section** is an essential part of the SAT exam, and mastering it can significantly enhance your overall score. By understanding the section's format, practicing effectively, and utilizing strategic test-taking techniques, students can improve their performance. Remember, consistent practice and a solid grasp of mathematical concepts will be your best allies in achieving your desired SAT score. With diligent preparation and the right mindset, you can conquer the SAT Math Calculator Section and pave the way for your academic success.

Frequently Asked Questions

What types of math problems can I expect in the SAT calculator section?

The SAT calculator section includes a variety of math problems, such as algebra, problem-solving and data analysis, and advanced math concepts, including functions and geometry.

Can I use any calculator on the SAT math calculator section?

No, you can only use a permitted calculator. Most scientific and graphic calculators are allowed, but you should check the official SAT guidelines for specific restrictions.

How much time is allotted for the SAT math calculator section?

You have 55 minutes to complete the SAT math calculator section, which includes 38 questions.

What strategies can I use to maximize my score in the SAT calculator section?

To maximize your score, practice with a variety of problems, familiarize yourself with calculator functions, manage your time effectively, and double-check your answers when possible.

Are there any specific calculator functions that are particularly useful for the SAT?

Yes, functions such as graphing capabilities, statistical calculations, and the ability to solve

📖 SAT 1500+ 2015 SAT SAT “” ...

TOP30 SAT? - SAT SAT ...

sat - SAT Scholastic Assessment Test (College Board CB) ACT (American College Test) “” ...

86 SAT 700+ || TD
Dec 13, 2021 · SAT SAT 1530 SAT TA ...

FAT SAT? - SAT 3. SAT ...

A-level IB AP SAT ACT - SAT Scholastic Aptitude Test 2016 SAT 1600 ...

SAT - SAT 46 SAT SAT Essay SAT ...

SAT - SAT SAT SAT

SAT SAT - SAT SAT “” College Board ...

SAT - SAT Jun 17, 2025 · SAT SAT 1 ...

SIT SAT ... SAT 1500+ 2015 SAT SAT “” ...

TOP30 SAT? - SAT SAT ...

Master the SAT Math Calculator Section with our expert tips and strategies. Unlock your potential and boost your score. Learn more for success!

[Back to Home](#)