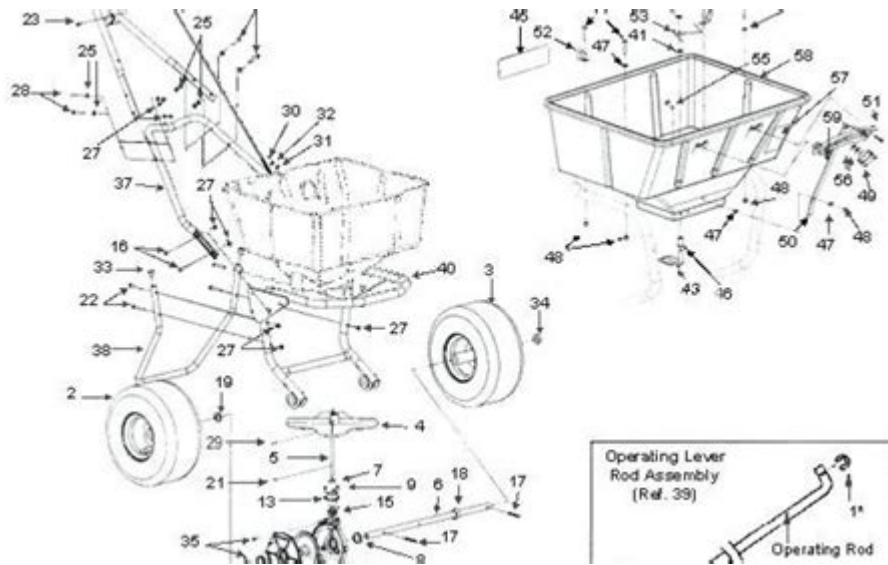


Scotts Drop Spreader Parts Diagram



Scotts drop spreader parts diagram is an essential tool for anyone looking to maintain their lawn or garden effectively. A drop spreader is a vital piece of equipment that helps distribute fertilizers, seeds, and other materials evenly across the surface of your yard. Understanding the parts of your Scotts drop spreader can enhance your ability to perform maintenance, troubleshoot issues, and ensure optimal performance. This article will delve into the components of a Scotts drop spreader, highlight their functions, and provide insights on how to maintain and troubleshoot these parts.

Understanding the Scotts Drop Spreader

Before we dive into the parts diagram, it's crucial to understand what a drop spreader is and how it functions. A drop spreader is designed to deliver seeds or fertilizers in a controlled manner. Unlike broadcast spreaders, which fling materials over a wide area, drop spreaders release products directly below the hopper. This targeted application helps minimize waste and ensures that the materials reach the intended areas.

Components of a Scotts Drop Spreader

A Scotts drop spreader consists of several key components, each playing a critical role in its operation. Understanding these parts can help users optimize their use and perform necessary maintenance. The main components include:

1. Hopper

The hopper is the container that holds the seed or fertilizer. It is typically made from durable plastic or metal and is designed to be weather-

resistant. The size of the hopper can vary, allowing for different capacities depending on the model.

2. Drop Plate

The drop plate is a crucial part of the spreader that controls the flow of materials from the hopper. By adjusting the drop plate, users can regulate the amount of seed or fertilizer being dispensed. This is essential for achieving the desired coverage without over-applying.

3. Agitator

The agitator is a mechanism within the hopper that helps keep the materials flowing evenly. It prevents clumping and ensures that the seeds or fertilizer move smoothly down to the drop plate. This part is particularly important when working with granular materials that tend to stick together.

4. Wheels

The wheels of the drop spreader provide mobility and stability. They are designed to handle various terrains and may come with different tread patterns for enhanced traction. The size and material of the wheels can affect the ease of use, especially on uneven surfaces.

5. Handle

The handle is what the user grips to maneuver the spreader. It is usually adjustable for height, allowing for comfortable use by individuals of varying sizes. The handle may also feature controls for opening and closing the drop plate.

6. Frame

The frame provides the structural integrity of the drop spreader. It supports the hopper, wheels, and other components, allowing the spreader to function effectively. The frame is often made from rust-resistant materials to ensure longevity.

7. Calibration Settings

Calibration settings are markings or adjustments that help users determine the correct rate of application based on the type of material being used. Proper calibration is essential for achieving effective results and avoiding over- or under-application.

Scotts Drop Spreader Parts Diagram

Understanding the parts of the Scotts drop spreader is facilitated by visual aids such as diagrams. A parts diagram typically illustrates the components mentioned above, providing a clear view of how they fit together. Here's a simple breakdown of how to interpret a parts diagram:

1. **Identify Each Component:** Look for labeled sections that correspond to the parts previously discussed.
2. **Understand Assembly:** Observe how the components connect, which can help in reassembly or repairs.
3. **Locate Replacement Parts:** Use the diagram to find specific components that may need replacement, making it easier to order parts.

Maintenance Tips for Your Scotts Drop Spreader

Proper maintenance of your Scotts drop spreader can prolong its lifespan and ensure it operates efficiently. Here are some essential maintenance tips:

- **Regular Cleaning:** After each use, clean the hopper and drop plate to prevent buildup of materials that can cause rust or blockages.
- **Check for Wear:** Inspect the wheels, handle, and frame for any signs of wear and tear. Replace any damaged parts promptly.
- **Lubricate Moving Parts:** Apply lubrication to the wheels and any moving parts to ensure smooth operation.
- **Store Properly:** When not in use, store the spreader in a dry, sheltered place to protect it from the elements.
- **Calibrate Regularly:** Recalibrate the drop plate settings before each use, especially when switching between different materials.

Troubleshooting Common Issues

Even with proper maintenance, issues can arise with your Scotts drop spreader. Here are some common problems and their solutions:

1. Uneven Distribution

If you notice that the spreader is not distributing materials evenly, check the following:

- Ensure the drop plate is functioning correctly and not stuck.

- Verify that the agitator is working and not clogged.
- Adjust the calibration settings according to the material being used.

2. Blockages

Blockages can occur if materials clump together:

- Clean the hopper and drop plate thoroughly.
- Use dry materials whenever possible to prevent clumping.
- Inspect the agitator for any damage or buildup.

3. Rust or Corrosion

Rust can develop if the spreader is not stored properly:

- Regularly clean the spreader after use, particularly the metal parts.
- Store the spreader indoors or in a sheltered area to avoid exposure to moisture.

Conclusion

A thorough understanding of the **Scotts drop spreader parts diagram** and its components can significantly enhance your lawn care experience. By familiarizing yourself with each part's function, you can ensure efficient operation, perform necessary maintenance, and troubleshoot common issues. Following the maintenance tips and being aware of potential problems can help you get the most out of your Scotts drop spreader, ensuring a lush, healthy lawn year-round. Whether you are a seasoned gardener or a novice, keeping your equipment in top shape is essential for achieving the best results in your gardening endeavors.

Frequently Asked Questions

What is a Scotts drop spreader parts diagram used for?

A Scotts drop spreader parts diagram is used to identify and understand the various components of the spreader, aiding in maintenance, repair, and assembly.

Where can I find a Scotts drop spreader parts diagram?

You can find a Scotts drop spreader parts diagram on the official Scotts website, in the product manual, or through various online retailers that sell replacement parts.

What are common parts included in a Scotts drop

spreader parts diagram?

Common parts include the hopper, spreader plate, wheels, handle, and control lever. Each part is labeled for easy identification.

How can I use the parts diagram to troubleshoot my Scotts drop spreader?

By consulting the parts diagram, you can locate specific components that may be malfunctioning or damaged, allowing you to identify which parts need repair or replacement.

Are there any online forums or communities that discuss Scotts drop spreader parts?

Yes, there are several online gardening and lawn care forums where enthusiasts share tips, troubleshooting advice, and parts information related to Scotts drop spreaders.

Can I order replacement parts for my Scotts drop spreader using the parts diagram?

Absolutely! You can use the parts diagram to identify the specific parts you need and then order them directly from the Scotts website or authorized retailers.

Find other PDF article:

<https://soc.up.edu.ph/25-style/pdf?dataid=IJP84-5008&title=google-pixel-6a-user-manual.pdf>

Scotts Drop Spreader Parts Diagram

Scotts® Canada

The Gro for Good Grant Program, an initiative by Scotts Canada and it's partners, supports community gardens and green spaces across Canada. By providing financial assistance and ...

Scott's Nursery Shopify - Scott's Nursery Ltd.

Scott's Nursery Ltd. 2192 Route 102 Hwy, Lincoln, NB E3B 8N1 Open Monday To Saturday 8 am to 5 pm

Scott's Nursery - Facebook

We are a family-owned and operated small business located in New Brunswick Canada. We Are Open Monday to Saturday From 8 am - 5 pm

Scotts Turf Builder PRO Lawn Fertilizer, 400-m2 - Canadian Tire

Formulated to help your lawn grow thick and healthy, Scotts Turf Builder PRO Lawn Food provides much-needed nutrients with no phosphates or fillers, and helps roots grow deep and ...

We've teamed up with U.S. Men's National Team Captain, Tyler Adams, to launch the Keep It Real sweepstakes - giving youth sports organizations a chance to win a grass field upgrade ...

About Us - Scott's Nursery Ltd.

Scott's Nursery, a beacon of horticultural excellence in Lincoln, New Brunswick, has garnered significant recognition over the years for its outstanding contributions to the gardening and ...

Harvest Market | Facebook

Shopping event in Oromocto, NB by Scott's Nursery on Saturday, October 5 2024 with 2.5K people interested and 170 people going. 72 posts in the discussion.

All Products | Scotts Canada

All Products Scotts® Turf Builder® Quick + Thick™ Grass Seed Sunny Bluegrass Mix

Home - Scott's Highland Services Inc.

Highland Soap Hand Care Gift Set - Our gorgeous new hand care gift sets encompass a beautiful tweed wash bag, hand stitched and long-lasting. Ideal for containing makeup or toiletries. ...

2025 Spring Fundraiser — SPCA

Apr 2, 2025 · Oromocto and Area SPCA 111 D'Amours Street, Oromocto, NB Email: orphans@oromoctospca.com Phone: 506-446-4107

Scotts® Canada

The Gro for Good Grant Program, an initiative by Scotts Canada and it's partners, supports community gardens and green spaces across Canada. By providing financial assistance and ...

Scott's Nursery Shopify - Scott's Nursery Ltd.

Scott's Nursery Ltd. 2192 Route 102 Hwy, Lincoln, NB E3B 8N1 Open Monday To Saturday 8 am to 5 pm

Scott's Nursery - Facebook

We are a family-owned and operated small business located in New Brunswick Canada. We Are Open Monday to Saturday From 8 am - 5 pm

Scotts Turf Builder PRO Lawn Fertilizer, 400-m2 - Canadian Tire

Formulated to help your lawn grow thick and healthy, Scotts Turf Builder PRO Lawn Food provides much-needed nutrients with no phosphates or fillers, and helps roots grow deep and ...

Lawn Care Products and Maintenance — Lawn Tips! | Scotts

We've teamed up with U.S. Men's National Team Captain, Tyler Adams, to launch the Keep It Real sweepstakes - giving youth sports organizations a chance to win a grass field upgrade ...

About Us - Scott's Nursery Ltd.

Scott's Nursery, a beacon of horticultural excellence in Lincoln, New Brunswick, has garnered significant recognition over the years for its outstanding contributions to the gardening and ...

Harvest Market | Facebook

Shopping event in Oromocto, NB by Scott's Nursery on Saturday, October 5 2024 with 2.5K people interested and 170 people going. 72 posts in the discussion.

All Products | Scotts Canada

All Products Scotts® Turf Builder® Quick + Thick™ Grass Seed Sunny Bluegrass Mix

Home - Scott's Highland Services Inc.

Highland Soap Hand Care Gift Set - Our gorgeous new hand care gift sets encompass a beautiful tweed wash bag, hand stitched and long-lasting. Ideal for containing makeup or toiletries. ...

2025 Spring Fundraiser — SPCA

Apr 2, 2025 · Oromocto and Area SPCA 111 D'Amours Street, Oromocto, NB Email: orphans@oromoctospca.com Phone: 506-446-4107

Explore our detailed Scott's drop spreader parts diagram to easily identify components and enhance your lawn care. Learn more for a smoother gardening experience!

[Back to Home](#)