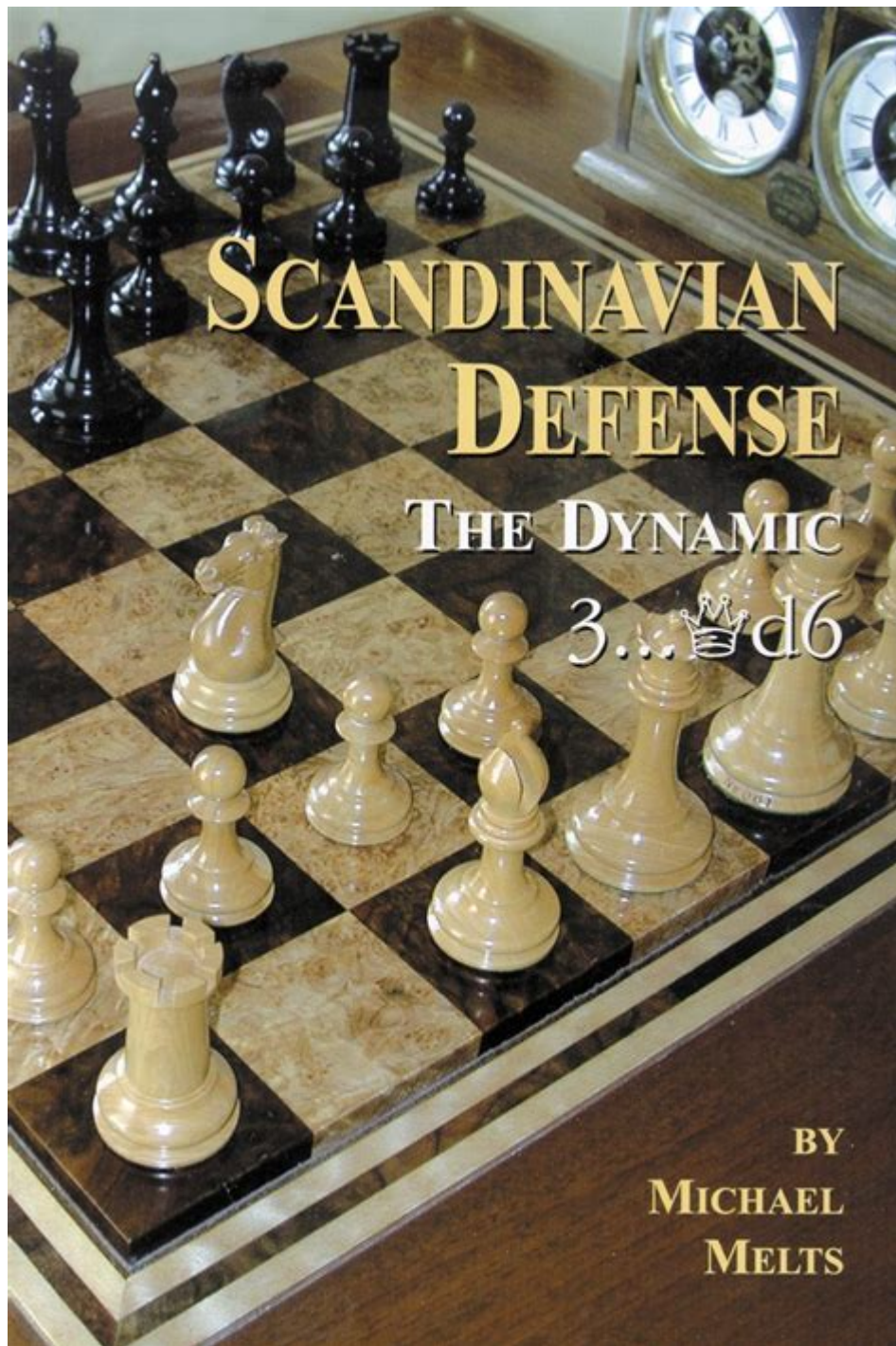


# Scandinavian Defense The Dynamic 3 Qd6



**Scandinavian Defense: The Dynamic 3...Qd6** is an intriguing and aggressive line in chess that has gained considerable attention from players at all levels. This variation arises after the moves 1. e4 c6 2. d4 d5 3. Nc3 (or 3. Nf3) dxe4 4. Nxe4 Qd5. The Scandinavian Defense is known for its straightforward approach, allowing Black to challenge White's center immediately, and the 3...Qd6 variation adds a dynamic twist that can catch opponents off guard. In this article, we will explore the strategic ideas behind the Scandinavian Defense, particularly the 3...Qd6 line, key moves, tactical motifs, and how players can effectively navigate this dynamic opening.

# Understanding the Scandinavian Defense

The Scandinavian Defense is a popular choice for players who prefer a solid yet active approach. By playing 1...c6, Black prepares to challenge the center with ...d5, aiming to exchange pawns and create a balanced position. The main idea is to avoid the more passive setups that can arise from other defenses, allowing Black to develop pieces rapidly and maintain an equal game.

## Key Ideas Behind 3...Qd6

The move 3...Qd6 serves multiple purposes:

1. **Central Control:** By placing the queen on d6, Black reinforces the center and prepares to recapture the pawn on e4 if needed. This move also puts pressure on the knight on e4, making it a target for further attacks.
2. **Development of Pieces:** The queen on d6 can facilitate the development of the bishop on c8. A subsequent ...Bf5 or ...Bg4 can put pressure on White's position and help Black gain active piece play.
3. **Flexibility:** The placement of the queen on d6 allows Black to keep options open for pawn structure and development. Depending on White's response, Black can decide on the best course of action.
4. **Psychological Edge:** Many players are less familiar with the intricacies of the Scandinavian Defense, especially the 3...Qd6 line. This can lead to opportunities for surprises and tactical skirmishes that can favor Black.

## Key Moves and Variations

After 3...Qd6, White has several options to consider. The most common continuations include:

1. 4. Nxd6+ Qxd6  
- This exchange leads to a simplified position where Black can develop their pieces freely. Here, the game typically continues with 5. Nf3, allowing Black to play ...Nf6 and ...e6, solidifying their position.
2. 4. Nf3  
- White can choose to avoid the exchange and maintain the knight on the board. The game can continue with 4...Qd5, putting pressure on the knight, leading to a variety of complex positions.
3. 4. Bd3  
- This is another interesting move that aims to develop pieces while maintaining the e4 knight. After 4...Qd5, White can respond with 5. Nf3, and the game can evolve into a rich middlegame.
4. 4. Nc3  
- Retaining the knight on c3 is also a viable option. After 4...Qd5, White can play 5. Nf3, leading to a

battle for the center.

## Strategic Plans for Black

As Black navigates the 3...Qd6 variation, there are several strategic plans to consider:

- Developing the Light-Squared Bishop: The move ...Bf5 or ...Bg4 can be potent in putting pressure on White's position. It's critical to activate the bishop before committing to further pawn moves.
- Central Control with ...e6: After developing the pieces, playing ...e6 can provide a strong pawn structure and a solid central presence. It allows the light-squared bishop to be developed while also preparing to challenge White's center.
- Counterplay on the Queenside: Depending on White's setup, Black might consider playing ...b5 to expand on the queenside. This can lead to active play and opportunities to create imbalances.
- King Safety: Just like in many openings, ensuring king safety is paramount. Black should consider castling early to connect the rooks and enhance coordination between pieces.

## Tactical Motifs in the 3...Qd6 Variation

The 3...Qd6 variation of the Scandinavian Defense is rife with tactical opportunities. Some common motifs include:

- Deflection: The queen on d6 can be a target for attacks, and opponents may try to force it to move, disrupting Black's coordination.
- Forks and Pins: The tactical possibilities with knights and bishops are crucial. Players should be on the lookout for positions where they can fork pieces or pin an opponent's piece to gain material advantage.
- Counterattacks: Given the open nature of the position, Black should always be ready to launch counterattacks when White overextends.
- Tactical Skirmishes: The tactical richness of this variation means that both sides must be vigilant. Calculating tactical sequences accurately can lead to quick victories or a significant advantage.

## Common Mistakes to Avoid

In the dynamic 3...Qd6, players can fall into several traps or make common mistakes:

1. Overextending: Black should be careful not to overextend with pawn moves that weaken the position. Maintaining a solid pawn structure is crucial.
2. Neglecting Development: As with any opening, neglecting development can lead to a cramped

position. Ensuring that all pieces are actively participating is key.

3. Ignoring King Safety: Failing to castle early can lead to vulnerabilities, especially in open positions created by the Scandinavian Defense.

4. Misplacing the Queen: While the queen on d6 is active, it can become a target. Players must be vigilant to avoid unnecessary exchanges or attacks that can lead to loss of tempo.

## Conclusion

The Scandinavian Defense, particularly the 3...Qd6 variation, offers an exciting and dynamic approach for players looking to challenge their opponents from the very start. The strategic and tactical richness of this line provides ample opportunities for both sides, making it essential for players to be well-prepared. By understanding key ideas, practicing common motifs, and avoiding typical pitfalls, players can harness the power of the Scandinavian Defense to achieve favorable positions and, ultimately, victories on the chessboard. Whether you are a beginner or an experienced player, incorporating this opening into your repertoire can bring a fresh perspective and revitalized enthusiasm for the game.

## Frequently Asked Questions

### What is the Scandinavian Defense in chess?

The Scandinavian Defense is a chess opening that begins with the moves 1.e4 d5. It aims to challenge White's center early and can lead to dynamic play.

### What does the move 3...Qd6 signify in the Scandinavian Defense?

The move 3...Qd6 places the queen on d6, targeting the pawn on e5 while also preparing to recapture on d5 after potential exchanges, leading to an active position for Black.

### How does 3...Qd6 differ from other variations in the Scandinavian Defense?

3...Qd6 is a less common response compared to 3...dxe4 or 3...Nf6, as it can lead to unique middle game positions and provides Black with tactical opportunities against White's pawn structure.

### What are the main ideas for White after 3...Qd6?

After 3...Qd6, White can play moves like 4.Nf3 to develop pieces while maintaining pressure on the center, or 4.d4 to challenge Black's central pawn immediately.

### Is 3...Qd6 a solid choice for beginners playing the

## Scandinavian Defense?

Yes, 3...Qd6 can be a solid choice for beginners as it simplifies the opening and allows for straightforward development while still posing challenges for White.

## What strategies should Black employ after playing 3...Qd6?

After playing 3...Qd6, Black should focus on developing pieces harmoniously, preparing to challenge White's center, and looking for opportunities to create counterplay based on the pawn structure.

Find other PDF article:

<https://soc.up.edu.ph/17-scan/files?trackid=Err12-3080&title=digimon-world-dawn-digivolution-guide.pdf>

## Scandinavian Defense The Dynamic 3 Qd6

Scandinavian Defense - 3Qd6

Scandinavian Defense (3.Qd6) is a solid choice for beginners as it simplifies the opening and allows for straightforward development while still posing challenges for White.

...

Scandinavian Defense "3.Qd6" - 3Qd6

Feb 6, 2018 · Scandinavian Defense (3.Qd6) is a solid choice for beginners as it simplifies the opening and allows for straightforward development while still posing challenges for White.

"skadino" is a common term for the Scandinavian Defense.

Scandinavian Journal of Statistics - 3Qd6

Scandinavian Journal of Statistics is a leading journal in the field of statistics. It publishes original research, reviews, and theoretical articles. The journal is published quarterly, with issues in Q1, Q2, Q3, and Q4.

Scandinavian Design - 3Qd6

Scandinavian Design (Scandinavian Design) is a term used to describe the design style of the Scandinavian countries (Denmark, Norway, and Sweden). It is characterized by clean lines, functional design, and a focus on natural materials.

Scandinavian - 3Qd6

Scandinavian design is a term used to describe the design style of the Scandinavian countries (Denmark, Norway, and Sweden). It is characterized by clean lines, functional design, and a focus on natural materials.

Scandinavian BATHORY - 3Qd6

1983 Bathory is a Swedish heavy metal band. They are known for their dark, atmospheric sound and lyrics. They have released several albums, including "Scandinavian Metal Attack".

Scandinavian - 3Qd6

The terms Scandinavia and Scandinavian entered usage in the late 18th century as terms for Denmark, Norway and Sweden, their Germanic majority peoples and associated language and ...

Scandinavian - 3Qd6

Scandinavian "modern Scandinavian style" is a term used to describe the design style of the Scandinavian countries (Denmark, Norway, and Sweden). It is characterized by clean lines, functional design, and a focus on natural materials.

□ □ □ □ □

□□□□□□□□ - □□

Scandinavian Style Swedish Style

$$\square\square\square\square - \square\square$$

Apr 24, 2020 · [Star Alliance](#) [1997](#) [...](#)

□□□□□□□□□□□□□□ - □□

[illegible]

□□□□□□□□ "□□□□□□" □□□□ "□□□□□□" □ - □□

[illegible][illegible]

Scandinavian Journal of Statistics □□□□□□□□□□ □□□□□□□□□□□□□□ Q1□□□□□□□□□□ □□□□□□□□□□  
□□□□ □□□□□□□□□□ Q2□□ ...

□□□□□□□□ - □□

Scandinavian Design  
...

□□□□ - □□

Scandinavian design ...

□□□□□□□□*BATHORY*□□□□□□□□ - □□

1983 Bathory Tyfon Scandinavian Metal Attack

□□□□□□□□□□□□□□ - □□

The terms Scandinavia and Scandinavian entered usage in the late 18th century as terms for Denmark, Norway and Sweden, their Germanic majority peoples and associated language and ...

□□□□□□□□□□ - □□

“modern Scandinavian style” 20

-

Scandinavian Style      Swedish Style

□□□□ - □□

Apr 24, 2020 · Star Alliance 1997 ...

Unlock the secrets of the Scandinavian Defense with our in-depth guide on the dynamic 3...Qd6.

Discover how to master this powerful strategy today!

[Back to Home](#)