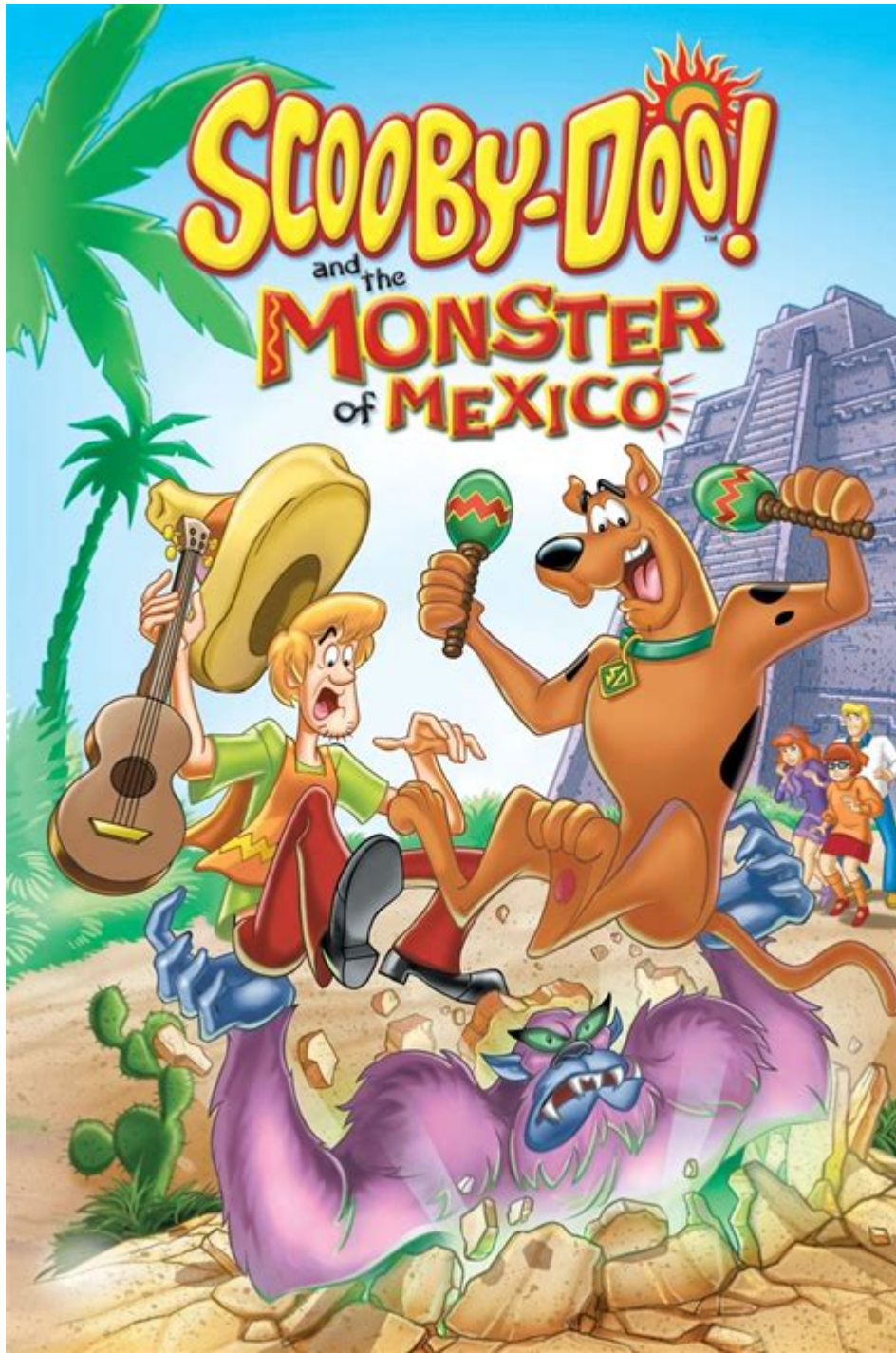


Scooby Doo And The Monster Of Mexico



Scooby Doo and the Monster of Mexico is a captivating animated film that showcases the beloved characters from the Scooby-Doo franchise. Released in 2003, this direct-to-video installment brings together the iconic mystery-solving gang—Scooby-Doo, Shaggy, Fred, Velma, and Daphne—as they embark on a thrilling adventure south of the border. Set against the vibrant backdrop of Mexico, the film integrates elements of Mexican culture, folklore, and tradition while delivering the classic Scooby-Doo charm.

Plot Summary

"Scooby Doo and the Monster of Mexico" begins with the Mystery Inc. team traveling to Mexico to attend a festival known as the "Day of the Dead." This lively celebration honors deceased loved ones through colorful festivities, food, and music. However, trouble arises when rumors of a terrifying monster, El Chupacabra, start to spread throughout the town of El Chupacabra. The locals fear that the legendary creature is responsible for livestock disappearances and other strange occurrences.

The gang quickly realizes that they must investigate the mystery behind El Chupacabra and restore peace to the town. As they delve deeper into the case, they encounter various suspects, each with their own motives and secrets. The combination of suspense, humor, and cultural references keeps audiences engaged as Scooby and the gang work to uncover the truth.

Character Analysis

The film features many familiar faces, each contributing to the story in unique ways. Here's a closer look at the main characters:

Scooby-Doo

Scooby-Doo, the lovable Great Dane, is the heart of the film. His comedic antics and appetite provide comic relief in tense situations. Despite his cowardice, Scooby often finds the courage to help his friends, showcasing the theme of bravery in the face of fear.

Shaggy Rogers

Shaggy, Scooby's best friend and partner in mischief, is known for his insatiable appetite and laid-back demeanor. His character brings humor to the film, often resulting in laugh-out-loud moments as he navigates the spooky settings and encounters with the supposed monster.

Fred Jones

As the leader of Mystery Inc., Fred is determined and resourceful. He takes charge of the investigation, devising traps and strategies to catch the monster. His character often embodies bravery and determination, providing a contrast to Scooby and Shaggy's more comical approach.

Velma Dinkley

The brains of the group, Velma is analytical and observant. Her attention to detail is crucial in piecing together clues and solving the mystery. Velma's intelligence often leads to key

discoveries that help the gang move closer to revealing the truth behind El Chupacabra.

Daphne Blake

Daphne, known for her fashion sense and resourcefulness, plays an essential role in the film. She often finds herself in perilous situations, yet her quick thinking and bravery help the team escape dangers.

Cultural Significance

One of the standout features of "Scooby Doo and the Monster of Mexico" is its incorporation of Mexican culture and traditions. The film highlights various elements that reflect the rich heritage of Mexico, particularly during the Day of the Dead celebrations.

- **Day of the Dead:** The film introduces viewers to this significant Mexican holiday, which honors deceased loved ones. The vibrant altars, marigolds, and sugar skulls featured in the film provide a glimpse into the traditional customs associated with the celebration.
- **Folklore and Legends:** El Chupacabra, a legendary creature in Latin American folklore, serves as the central mystery in the film. By incorporating this myth, the filmmakers connect the story to regional legends, making it more relatable for the audience.
- **Music and Dance:** The film features lively music and dance sequences, showcasing traditional Mexican festivities. These elements enhance the overall atmosphere, immersing viewers in the cultural experience.

The respectful representation of Mexican culture helps to bridge cultural gaps and introduces audiences to new traditions while maintaining the fun and humor characteristic of the Scooby-Doo series.

Animation Style and Production

"Scooby Doo and the Monster of Mexico" was produced by Warner Bros. Animation, known for its high-quality animated features. The animation style stays true to the classic Scooby-Doo aesthetic while incorporating vibrant colors and lively backgrounds that reflect the Mexican setting.

The character designs maintain the familiar looks of the beloved Mystery Inc. team, ensuring that fans of the franchise will feel right at home. The animation effectively conveys the emotional depth of the characters, enhancing comedic moments and suspenseful scenes alike.

Thematic Elements

The film explores several themes that resonate with audiences of all ages:

Friendship and Teamwork

The strength of the Mystery Inc. team is a central theme throughout the film. Each character brings their unique skills to the table, showcasing the importance of collaboration and trust in overcoming obstacles. Their unwavering support for one another reinforces the idea that friendship can conquer fear.

Courage in the Face of Fear

Both Scooby and Shaggy exemplify this theme, as they confront their fears throughout the film. Their journeys reveal that bravery can come in many forms, and facing fears is an essential part of personal growth.

Understanding and Respect for Different Cultures

By highlighting Mexican traditions and folklore, the film encourages viewers to appreciate and respect different cultures. This theme is particularly relevant in today's increasingly interconnected world, where understanding and celebrating diversity is vital.

Reception and Impact

Upon its release, "Scooby Doo and the Monster of Mexico" received a mixed to positive reception from fans and critics alike. While some praised the film for its engaging plot and cultural references, others felt it did not quite capture the magic of the earlier Scooby-Doo episodes.

Despite varied opinions, the film has maintained a loyal fan base over the years. It serves as a fun introduction to Mexican culture for younger audiences while providing entertainment for long-time fans of the franchise.

Conclusion

"Scooby Doo and the Monster of Mexico" is more than just a typical animated film; it is a delightful blend of mystery, humor, and cultural exploration. By showcasing the beloved Scooby-Doo characters in a vibrant Mexican setting, the film captivates audiences while imparting valuable lessons about friendship, courage, and respect for diverse cultures. As Mystery Inc. solves the mystery of El Chupacabra, viewers are taken on a thrilling journey that honors the spirit of adventure that has made Scooby-Doo a timeless classic.

Frequently Asked Questions

What is the main plot of 'Scooby-Doo and the Monster of Mexico'?

In 'Scooby-Doo and the Monster of Mexico', the Mystery Inc. gang travels to Mexico for a festival and encounters a legendary monster, the Chupacabra, while trying to solve the mystery behind the creature's appearances and the ensuing chaos.

Who are the main characters featured in 'Scooby-Doo and the Monster of Mexico'?

The main characters include Scooby-Doo, Shaggy Rogers, Fred Jones, Daphne Blake, and Velma Dinkley, who all work together to unravel the mystery in Mexico.

What themes are explored in 'Scooby-Doo and the Monster of Mexico'?

The film explores themes of friendship, teamwork, and the importance of understanding cultural legends, as the gang learns about the local customs and the significance of the Chupacabra myth.

How does 'Scooby-Doo and the Monster of Mexico' incorporate Mexican culture?

The movie incorporates Mexican culture through its setting, traditional music, local festivals, and folklore, providing a vibrant backdrop for the mystery while respecting cultural elements.

Was 'Scooby-Doo and the Monster of Mexico' well-received by fans and critics?

'Scooby-Doo and the Monster of Mexico' generally received positive feedback from fans for its humor, animation style, and engaging storyline, although opinions may vary among critics regarding its originality.

Find other PDF article:

<https://soc.up.edu.ph/27-proof/pdf?docid=vjf73-2351&title=higher-order-thinking-questions-for-preschool.pdf>

[Scooby Doo And The Monster Of Mexico](#)

Scooby-Doo is an American media franchise owned by Warner Bros. Entertainment and created in 1969 by writers Joe Ruby and Ken Spears through their animated series, Scooby-Doo, Where Are You!, for Hanna-Barbera (which was absorbed into Warner Bros. Animation in 2001).

Scooby-Doo! | Classic Cartoon Compilation | Musical Chase ...

The gang needs some groovy tunes while their chased down by monsters! WB Kids is the home of all of your favorite clips featuring characters from the Looney Tunes, Scooby-Doo, Tom and Jerry and...

[Scooby-Doo | Scoobypedia | Fandom](#)

Scooby-Doo, also known as Scoobert "Scooby" Doo, is the eponymous iconic character from the Hanna-Barbera franchise. He is a Great Dane and the mascot of Mystery Inc., the team that solves mysteries using Scooby to sniff out clues.

Scoob! (2020) - IMDb

May 15, 2020 · Scooby and the gang face their most challenging mystery ever: a plot to unleash the ghost dog Cerberus upon the world. As they race to stop this dogpocalypse, the gang discovers that Scooby has an epic destiny greater than anyone imagined.

Watch Scooby-Doo Where Are You? Streaming Online - Tubi

Watch Scooby-Doo Where Are You? Free Online | 2 Seasons. The classic adventures of the lovable Great Dane and his human companions as they hunt for clues, hungry for a solution to mysteries and a snack.

Scooby-Doo | Cartoon, Characters, TV Shows, Movie, & Facts

Scooby-Doo, American animated cartoon series featuring the adventures of Scooby-Doo, a talking Great Dane, and his mystery-solving teenage companions.

Everything To Know About Scooby-Doo | Fandom

Scooby-Doo is a beloved animated universe that has been captivating audiences since its debut in 1969. The original series, "Scooby-Doo, Where Are You!" introduced us to the iconic Great Dane, Scooby-Doo, and his human companions - Fred, Daphne, Velma, and Shaggy.

[Scooby-Doo \(character\) - Wikipedia](#)

Writers Joe Ruby and Ken Spears created the original Scooby-Doo series, Scooby-Doo, Where Are You!, for Hanna-Barbera as a part of CBS 's 1969-1970 Saturday morning cartoon schedule.

[Scooby-Doo \(Full Episodes\) - YouTube](#)

Scooby-Doo (Full Episodes) by OggOne • Playlist • 227 videos • 2,074,559 views

Scoobypedia - Fandom

Follow the adventures of the Mystery Inc. gang in the all-new Scooby-Doo movie, Scooby-Doo! and Krypto, Too! The worlds of Scooby-Doo and the DC Superheroes collide when the Justice League disappears, and Mystery Inc. is called to Metropolis to investigate.

[Scooby-Doo - Wikipedia](#)

Scooby-Doo is an American media franchise owned by Warner Bros. Entertainment and created in 1969 by writers Joe Ruby and Ken Spears through their animated series, Scooby-Doo, Where Are You!, for Hanna-Barbera (which was absorbed into Warner Bros. Animation in 2001).

Scooby-Doo! | Classic Cartoon Compilation | Musical Chase ...

The gang needs some groovy tunes while their chased down by monsters! WB Kids is the home of all

of your favorite clips featuring characters from the Looney Tunes, Scooby-Doo, Tom and Jerry and...

Scooby-Doo | Scoobypedia | Fandom

Scooby-Doo, also known as Scoobert "Scooby" Doo, is the eponymous iconic character from the Hanna-Barbera franchise. He is a Great Dane and the mascot of Mystery Inc., the team that solves mysteries using Scooby to sniff out clues.

Scoob! (2020) - IMDb

May 15, 2020 · Scooby and the gang face their most challenging mystery ever: a plot to unleash the ghost dog Cerberus upon the world. As they race to stop this dogpocalypse, the gang discovers that Scooby has an epic destiny greater than anyone imagined.

Watch Scooby-Doo Where Are You? Streaming Online - Tubi

Watch Scooby-Doo Where Are You? Free Online | 2 Seasons. The classic adventures of the lovable Great Dane and his human companions as they hunt for clues, hungry for a solution to mysteries and a snack.

Scooby-Doo | Cartoon, Characters, TV Shows, Movie, & Facts

Scooby-Doo, American animated cartoon series featuring the adventures of Scooby-Doo, a talking Great Dane, and his mystery-solving teenage companions.

Everything To Know About Scooby-Doo | Fandom

Scooby-Doo is a beloved animated universe that has been captivating audiences since its debut in 1969. The original series, "Scooby-Doo, Where Are You!" introduced us to the iconic Great Dane, Scooby-Doo, and his human companions - Fred, Daphne, Velma, and Shaggy.

Scooby-Doo (character) - Wikipedia

Writers Joe Ruby and Ken Spears created the original Scooby-Doo series, Scooby-Doo, Where Are You!, for Hanna-Barbera as a part of CBS 's 1969-1970 Saturday morning cartoon schedule.

Scooby-Doo (Full Episodes) - YouTube

Scooby-Doo (Full Episodes) by OggOne • Playlist • 227 videos • 2,074,559 views

[Scoobypedia - Fandom](#)

Follow the adventures of the Mystery Inc. gang in the all-new Scooby-Doo movie, Scooby-Doo! and Krypto, Too! The worlds of Scooby-Doo and the DC Superheroes collide when the Justice League disappears, and Mystery Inc. is called to Metropolis to investigate.

Join Scooby-Doo and the gang in "Scooby-Doo and the Monster of Mexico" as they unravel spooky mysteries and uncover hidden treasures. Discover how their adventure unfolds!

[Back to Home](#)