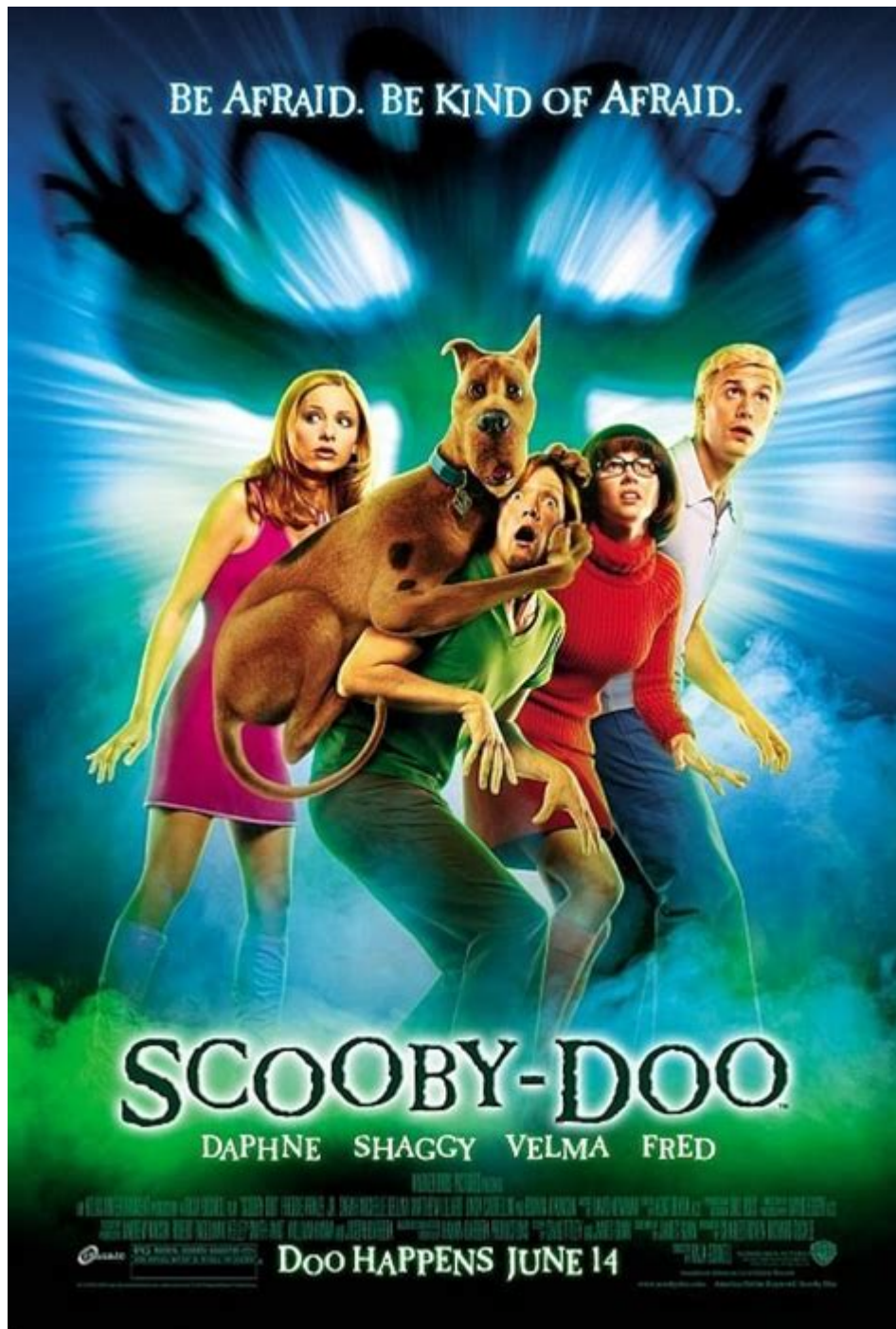


# Scooby Doo 2 Parents Guide



**Scooby Doo 2 Parents Guide** serves as an essential tool for parents trying to assess the suitability of the movie for their children. Released in 2004, "Scooby-Doo 2: Monsters Unleashed" is the sequel to the 2002 live-action adaptation of the beloved cartoon series. While it retains the charm and humor of the original, it also introduces themes and content that may require parental guidance. This article will provide an in-depth exploration of the film's content, themes, and the potential concerns for parents.

# Overview of Scooby-Doo 2: Monsters Unleashed

"Scooby-Doo 2: Monsters Unleashed" follows the Mystery Inc. gang as they face off against a new array of villains and monsters. The film combines elements of mystery, comedy, and adventure, making it appealing to both children and adults. The story centers around the gang's attempt to uncover who is behind a series of monster attacks in Coolsville, all while trying to clear their name after being framed for the chaos.

## Content Themes

While the movie is primarily designed for children, it does tackle various themes that might warrant discussion between parents and children. Here are some of the notable themes present in the film:

### Friendship and Teamwork

The film emphasizes the importance of friendship and teamwork. The Mystery Inc. gang works together to solve mysteries and support one another, demonstrating that collaboration can lead to success.

### Bravery and Overcoming Fears

The characters encounter numerous frightening monsters throughout the movie. However, they learn to face their fears and confront challenges, sending a positive message about bravery and resilience.

### Identity and Misunderstanding

The plot includes elements of mistaken identity and misinterpretation. Characters struggle with how they are perceived by others, which can lead to discussions about self-acceptance and the importance of understanding others.

## Parental Guidance Considerations

Even though "Scooby-Doo 2: Monsters Unleashed" is generally kid-friendly, there are specific elements that parents should consider when determining if the film is suitable for their children. Here are some points to note:

## Language

The film contains some mild language. While it is not excessive, there are a few instances of words or phrases that might not be suitable for younger viewers. Parents may want to be aware of this aspect.

## Scary Scenes

Though the movie is more comedic than genuinely scary, there are some scenes featuring monsters that might frighten sensitive children. The portrayal of these creatures is exaggerated and cartoonish, but it still may provoke fear in some viewers.

## Thematic Elements

Certain themes, such as betrayal and deception, are present in the storyline. While these are essential for plot development, they could lead to confusion or concern for younger audiences. Discussing these themes with children can help contextualize the narrative.

## Character Analysis

Understanding the main characters can also help parents gauge the film's appropriateness for their children. Here's a brief overview of the central figures in "Scooby-Doo 2: Monsters Unleashed":

- **Shaggy Rogers:** The lovable coward who often provides comic relief. His antics might appeal to younger viewers, but his fears may also resonate with children who experience anxiety.
- **Scooby-Doo:** The iconic Great Dane remains a symbol of loyalty and friendship. His humorous personality can be comforting for children and can help balance any scary moments with lightheartedness.
- **Fred Jones:** The leader of the gang, Fred is brave and resourceful. His character encourages children to be courageous in the face of challenges.
- **Daphne Blake:** Often portrayed as fashionable and resourceful, Daphne's character shows that intelligence and strength come in many forms.
- **Velma Dinkley:** The brains of the operation, Velma represents intelligence and problem-solving. Her character can inspire children to

value knowledge and critical thinking.

## Viewer Age Recommendations

The movie is rated PG, which stands for Parental Guidance. This indicates that some material may not be suitable for children. Here's a breakdown of the suitable age range and considerations for viewing:

1. **Age 6-8:** Children within this age range may enjoy the film, especially if they are fans of the original cartoon series. However, parents should be prepared to discuss any frightening scenes.
2. **Age 9-12:** Preteens may find the humor and adventure engaging. They are likely able to process the themes and any language concerns more maturely.
3. **Age 13 and above:** Teenagers may enjoy the film for its nostalgic value and humor. By this age, they are generally capable of understanding the themes and context of the movie.

## Conclusion

In summary, the Scooby Doo 2 Parents Guide is an invaluable resource for parents assessing the appropriateness of "Scooby-Doo 2: Monsters Unleashed" for their children. While the film is entertaining and educational, it is essential to recognize the elements that may require further discussion. By understanding the themes, character dynamics, and potential concerns, parents can facilitate a more enriching viewing experience for their children. Engaging in conversations about the content can help children process what they see and foster a deeper understanding of the film's messages. Overall, "Scooby-Doo 2: Monsters Unleashed" can be a fun and memorable family film when approached with mindful consideration.

## Frequently Asked Questions

### What age rating does 'Scooby-Doo 2: Monsters Unleashed' have?

The film is rated PG, suggesting parental guidance for children.

## **Are there any frightening scenes in 'Scooby-Doo 2' that parents should be aware of?**

Yes, the film contains some mildly scary scenes with monsters that may be intense for very young children.

## **Does 'Scooby-Doo 2' contain any inappropriate language?**

The film has minimal mild language, making it generally suitable for family viewing.

## **Is there any violence in 'Scooby-Doo 2'?**

There are cartoonish violence and slapstick humor, but nothing graphic or overly violent.

## **Should parents be concerned about the themes presented in 'Scooby-Doo 2'?**

The film explores themes of friendship, teamwork, and facing fears in a light-hearted manner.

## **Are there any strong moral messages in 'Scooby-Doo 2'?**

Yes, the film emphasizes the importance of friendship, loyalty, and believing in oneself.

## **Is 'Scooby-Doo 2' suitable for children under 5?**

While the film is rated PG, some younger children may find the monster scenes scary, so parental discretion is advised.

## **Can 'Scooby-Doo 2' be a fun movie for family movie nights?**

Absolutely! It's a family-friendly film with humor and adventure that appeals to both kids and adults.

Find other PDF article:

<https://soc.up.edu.ph/40-trend/pdf?ID=frC47-0474&title=mathematics-with-business-applications-worksheets-answer-key.pdf>

# [Scooby Doo 2 Parents Guide](#)

*Scooby-Doo - Wikipedia*

Scooby-Doo is an American media franchise owned by Warner Bros. Entertainment and created in 1969 by ...

## **Scooby-Doo! | Classic Cartoon Compilation | Musical Chase Sc...**

The gang needs some groovy tunes while their chased down by monsters! WB Kids is the home of all of your favorite clips ...

## **Scooby-Doo | Scoobypedia | Fandom**

Scooby-Doo, also known as Scoobert "Scooby" Doo, is the eponymous iconic character from the Hanna-Barbera ...

## **Scoob! (2020) - IMDb**

May 15, 2020 · Scooby and the gang face their most challenging mystery ever: a plot to unleash the ghost dog Cerberus ...

[Watch Scooby-Doo Where Are You? Streaming Online - Tubi](#)

Watch Scooby-Doo Where Are You? Free Online | 2 Seasons. The classic adventures of the lovable Great Dane ...

*Scooby-Doo - Wikipedia*

Scooby-Doo is an American media franchise owned by Warner Bros. Entertainment and created in 1969 by writers Joe Ruby and Ken Spears through their animated series, Scooby-Doo, Where Are ...

*Scooby-Doo! | Classic Cartoon Compilation | Musical Chase ...*

The gang needs some groovy tunes while their chased down by monsters! WB Kids is the home of all of your favorite clips featuring characters from the Looney Tunes, Scooby-Doo, Tom and ...

## **Scooby-Doo | Scoobypedia | Fandom**

Scooby-Doo, also known as Scoobert "Scooby" Doo, is the eponymous iconic character from the Hanna-Barbera franchise. He is a Great Dane and the mascot of Mystery Inc., the team that ...

## **Scoob! (2020) - IMDb**

May 15, 2020 · Scooby and the gang face their most challenging mystery ever: a plot to unleash the ghost dog Cerberus upon the world. As they race to stop this dogpocalypse, the gang discovers ...

[Watch Scooby-Doo Where Are You? Streaming Online - Tubi](#)

Watch Scooby-Doo Where Are You? Free Online | 2 Seasons. The classic adventures of the lovable Great Dane and his human companions as they hunt for clues, hungry for a solution to mysteries ...

## **Scooby-Doo | Cartoon, Characters, TV Shows, Movie, & Facts**

Scooby-Doo, American animated cartoon series featuring the adventures of Scooby-Doo, a talking Great Dane, and his mystery-solving teenage companions.

*Everything To Know About Scooby-Doo | Fandom*

Scooby-Doo is a beloved animated universe that has been captivating audiences since its debut in 1969. The original series, "Scooby-Doo, Where Are You!" introduced us to the iconic Great Dane, ...

### **Scooby-Doo (character) - Wikipedia**

Writers Joe Ruby and Ken Spears created the original Scooby-Doo series, Scooby-Doo, Where Are You!, for Hanna-Barbera as a part of CBS 's 1969-1970 Saturday morning cartoon schedule.

### Scooby-Doo (Full Episodes) - YouTube

Scooby-Doo (Full Episodes) by OggOne • Playlist • 227 videos • 2,074,559 views

### **Scoobypedia - Fandom**

Follow the adventures of the Mystery Inc. gang in the all-new Scooby-Doo movie, Scooby-Doo! and Krypto, Too! The worlds of Scooby-Doo and the DC Superheroes collide when the Justice ...

Explore our detailed Scooby Doo 2 parents guide

[Back to Home](#)