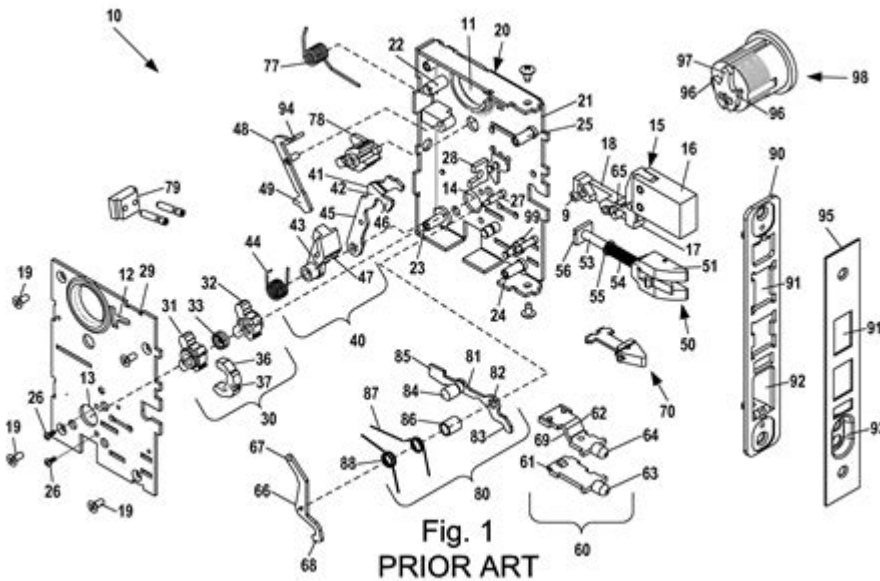


# Schlage Fe595 Parts Diagram



## Schlage FE595 Parts Diagram: Understanding the Components and Their Functions

The Schlage FE595 is a popular electronic deadbolt that provides a combination of security and convenience for homeowners. It features a keypad entry system, allowing users to unlock their doors without the hassle of keys. However, to fully appreciate the functionality of this lock, it's essential to understand its parts and how they work together. In this article, we will delve into the parts of the Schlage FE595, including a detailed parts diagram, the functions of each component, troubleshooting tips, and maintenance advice.

## Overview of Schlage FE595

The Schlage FE595 is designed for residential use, offering various benefits that make it stand out in the electronic lock market. Some of its key features include:

- Keypad Entry: Users can enter a 4 to 8-digit code to unlock their doors, providing keyless access.
- Built-in Alarm: The lock has a built-in alarm that alerts users to tampering.
- Easy Installation: The FE595 can be installed with basic tools and does not require professional help.
- Durability: Made from high-quality materials, this lock is built to withstand the elements and resist forced entry.

## Parts Diagram of Schlage FE595

Understanding the parts of the Schlage FE595 is crucial for installation, maintenance, and troubleshooting. Below is a detailed breakdown of the components found in the parts diagram of the

## 1. Exterior Assembly

The exterior assembly is the visible part of the lock that faces the outside. Its main components include:

- Keypad: The interface where users enter their access code.
- Trim Plate: This covers the space around the lock and provides a finished look.
- Deadbolt Cylinder: The part that engages with the door frame to secure the door.

## 2. Interior Assembly

The interior assembly is the part that is installed on the inside of the door. Key components include:

- Interior Rose: This is the piece that connects the interior assembly to the door.
- Thumb Turn: A mechanism that allows users to manually lock or unlock the deadbolt from the inside.
- Batteries: Typically, the Schlage FE595 uses four AA batteries for power, located within the interior assembly.

## 3. Locking Mechanism

The locking mechanism is crucial for the security of the lock. It comprises:

- Deadbolt: The main locking component that extends into the door frame when engaged.
- Spring: This mechanism ensures that the deadbolt retracts when the thumb turn is turned or the keypad code is entered.

## 4. Electronic Components

The electronic components are vital for the lock's functionality. They include:

- Control Board: The brain of the lock that processes input from the keypad and manages the locking mechanism.
- Sensors: These detect when the door is closed and help to ensure the deadbolt engages properly.
- LED Indicators: Lights that provide feedback on the lock's status, such as battery level and successful entry.

# Functions of Schlage FE595 Parts

Each component of the Schlage FE595 plays a specific role in the overall functionality of the lock. Understanding these functions can help in troubleshooting and maintaining the lock.

## Exterior Assembly Functions

- Keypad: Offers a user-friendly interface for quick access; its backlit feature allows for easy use in low light conditions.
- Trim Plate: Provides aesthetic appeal and protects the internal components from tampering.
- Deadbolt Cylinder: Ensures that the door is securely locked when the deadbolt is engaged.

## Interior Assembly Functions

- Interior Rose: Facilitates a smooth operation of the locking mechanism while providing a clean finish inside the home.
- Thumb Turn: Allows for easy manual locking and unlocking of the door, providing an alternative to the keypad entry.
- Batteries: Power the electronic components, ensuring the lock functions correctly.

## Locking Mechanism Functions

- Deadbolt: Provides high security by extending deep into the door frame, making it difficult to force the door open.
- Spring: Ensures that the deadbolt is always in a ready position to engage or disengage quickly.

## Electronic Components Functions

- Control Board: Manages the overall functionality of the lock, processes codes, and activates the locking mechanism.
- Sensors: Detect the position of the door, ensuring that the deadbolt only engages when the door is closed properly.
- LED Indicators: Provide users with visual feedback about the lock's status, such as successful code entry or low battery warnings.

## Troubleshooting Common Issues

Understanding the parts of the Schlage FE595 helps users troubleshoot common issues they may encounter. Here are some common problems and their potential solutions:

### 1. Lock Not Responding:

- Check if the batteries are low or dead; replace them if necessary.
- Ensure the keypad is clean and free from debris.

### 2. Keypad Not Working:

- Inspect the wiring connected to the control board for any loose connections.
- Reset the lock by removing the batteries for a few minutes and then re-inserting them.

### 3. Deadbolt Sticking:

- Ensure that the deadbolt is aligned properly with the strike plate on the door frame.
- Apply lubricant to the deadbolt mechanism if it appears to be sticking.

## Maintenance Tips for Schlage FE595

Regular maintenance can extend the life of your Schlage FE595 and ensure its optimal functionality. Here are some maintenance tips:

- **Change Batteries Regularly:** To prevent lockouts, replace the batteries at least once a year, or sooner if the LED indicators signal low battery.
- **Keep Keypad Clean:** Wipe the keypad with a soft, damp cloth to remove dirt and grime. Avoid using harsh chemicals that could damage the surface.
- **Lubricate Moving Parts:** Apply a silicone-based lubricant to the deadbolt mechanism to ensure smooth operation.
- **Test Functionality:** Periodically test the keypad and locking mechanism to catch any potential issues early.

## Conclusion

The Schlage FE595 is a robust and reliable electronic deadbolt that combines modern technology with traditional security features. Understanding the parts diagram of the Schlage FE595 and the functions of each component can enhance your experience with the lock, enabling you to install, maintain, and troubleshoot effectively. By following the maintenance tips and being aware of common issues, you can enjoy the peace of mind that comes with having a secure and functional locking system in your home.

## Frequently Asked Questions

### What is the purpose of the Schlage FE595 parts diagram?

The Schlage FE595 parts diagram provides a visual representation of the lock's components, helping users understand the assembly and identify parts for maintenance or replacement.

## **Where can I find a Schlage FE595 parts diagram?**

You can find the Schlage FE595 parts diagram on the official Schlage website, in the product manual, or through various hardware retailers that sell Schlage products.

## **What should I do if a part in my Schlage FE595 lock is damaged?**

If a part in your Schlage FE595 lock is damaged, refer to the parts diagram to identify the specific component you need and contact Schlage customer service or a local hardware store for replacement parts.

## **Are there any common issues identified in the Schlage FE595 parts diagram?**

Common issues that can be identified through the Schlage FE595 parts diagram include problems with the latch mechanism, deadbolt misalignment, or battery compartment accessibility.

## **Can I perform repairs on my Schlage FE595 lock using the parts diagram?**

Yes, the parts diagram can assist in performing repairs by showing how to disassemble and reassemble the lock, as well as identifying which parts may need replacement.

## **Is there a specific tool needed to replace parts shown in the Schlage FE595 parts diagram?**

Typically, you will need basic tools like a screwdriver and possibly a wrench, depending on the parts being replaced as indicated in the Schlage FE595 parts diagram.

## **How can I ensure I am ordering the correct parts for my Schlage FE595 lock?**

To ensure you are ordering the correct parts for your Schlage FE595 lock, reference the parts diagram for part numbers and descriptions, and cross-check with the retailer's inventory.

Find other PDF article:

<https://soc.up.edu.ph/43-block/pdf?trackid=ESs76-3866&title=new-york-real-estate-exam-2023.pdf>

## **Schlage Fe595 Parts Diagram**

*Converting Schlage Encode Plus to Kwikset keys. : r/Locksmith*

Apr 14, 2024 · Re-assemble Schlage encode plus and enjoy your matching Kwikset keys around your home. I recommend you watch the YouTube video link above to get visuals of someone ...

*Help with deciding on which Smart Lock to buy? Yale, Schlage*

Feb 3, 2022 · I have the schlage connect (same thing as the encode but zwave instead of wifi). I have been very happy with it. I bought it because it was the only ANSI grade 1 smart lock that ...

Schlage Encode WiFi Solved : r/homeassistant - Reddit

Feb 28, 2023 · Y'all, I'm so stoked right now. I've been looking for a way to get my preexisting Schlage Encode WiFi locks into Home Assistant and saw this post saying that there is a ...

*Locksmith told me Schlage is bad? : r/Locksmith - Reddit*

Jun 26, 2023 · Schlage has multiple product lines. All manufactures selling DIY products at big box stores cut quality to lower cost. Big difference between schlage B60, and B560, B660. ...

**Changing the orientation of the lock button on knob : r/Locksmith**

Jul 16, 2022 · I am installing new locks in our house and on the locks we bought, the locking button on the handle goes horizontal to lock and vertical to unlock. However both my wife and ...

**Home app: multiple users and privileges, questions on Schlage**

Aug 31, 2022 · I recently bought a Schlage Encode Plus and it's my first foray into Apple's Home app and HomeKit, other than the Apple TV. As a total newbie I just want to ask a few ...

**What is the difference between a Kwikset and a Schlage key and ...**

Aug 4, 2018 · The grooves cut along the blade of the key (called warding) are different from one another. Typically all lock manufacturers use a different warding pattern, meaning key blanks ...

**Issues with Schlage keypad deadbolts (BE365)...any one else?**

Jan 2, 2022 · Issues with Schlage keypad deadbolts (BE365)...any one else? I purchased two Schlage BE365 deadbolts, brand new and each at a different time and they both have the ...

**Aqara U100 or Schlage Encode Plus? : r/HomeKit - Reddit**

Jun 20, 2023 · I am looking to replace an old August Smart Lock Pro + Connect with a new HomeKit-friendly smart lock. I've narrowed it down to the Aqara U100 or the Schlage Encode ...

*Kwikset vs. Schlage - The Great Debate : r/Locksmith - Reddit*

Jun 29, 2017 · Schlage's deadbolts come with brass cylinders if you don't buy them from cheapo-depot. Use the longest wood screws you can find to make the door harder to kick in. ...

**Converting Schlage Encode Plus to Kwikset keys. : r/Locksmith**

Apr 14, 2024 · Re-assemble Schlage encode plus and enjoy your matching Kwikset keys around your home. I ...

*Help with deciding on which Smart Lock to buy? Yale, Schlag...*

Feb 3, 2022 · I have the schlage connect (same thing as the encode but zwave instead of wifi). I have been very happy ...

Schlage Encode WiFi Solved : r/homeassistant - Reddit

Feb 28, 2023 · Y'all, I'm so stoked right now. I've been looking for a way to get my preexisting Schlage Encode WiFi locks ...

**Locksmith told me Schlage is bad? : r/Locksmith - Reddit**

Jun 26, 2023 · Schlage has multiple product lines. All manufactures selling DIY products at big box stores cut quality ...

## **Changing the orientation of the lock button on knob : r/Locksmi...**

Jul 16, 2022 · I am installing new locks in our house and on the locks we bought, the locking button on the handle goes ...

Explore our detailed Schlage FE595 parts diagram to easily identify components and enhance your lock's functionality. Learn more for DIY tips and insights!

[Back to Home](#)