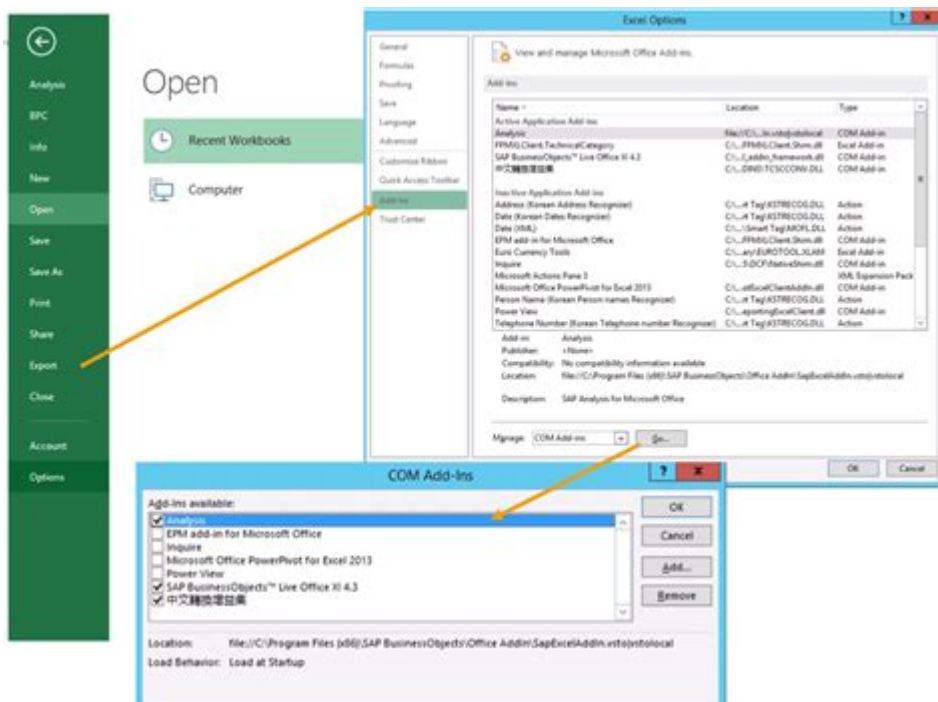


Sap Analysis For Microsoft Office



SAP analysis for Microsoft Office is an innovative solution that seamlessly integrates SAP data into familiar Office applications, enhancing the way businesses manage, analyze, and report their data. The combination of SAP, a leader in enterprise resource planning (ERP), and Microsoft Office, the widely-used productivity suite, allows users to leverage powerful analytical capabilities without the steep learning curve typically associated with complex software solutions. In this article, we will explore the features, benefits, and best practices of using SAP analysis for Microsoft Office, helping organizations unlock the full potential of their data.

Understanding SAP Analysis for Microsoft Office

SAP analysis for Microsoft Office is an add-in that connects Microsoft Excel and PowerPoint to SAP Business Warehouse (BW) and SAP Analytics Cloud. This tool allows users to perform data analysis and create reports directly within their preferred Office applications. By bringing together the robustness of SAP with the user-friendly interface of Office tools, organizations can streamline their business intelligence processes.

Key Features

The key features of SAP analysis for Microsoft Office include:

- **Data Connectivity:** Users can connect to various SAP environments, including SAP BW, SAP HANA, and SAP Analytics Cloud, allowing for real-time data retrieval and analysis.

- **Advanced Analytical Functions:** The tool provides advanced functions such as data slicing, dicing, and aggregating, enabling users to perform in-depth analyses with ease.
- **Integration with Office Applications:** Users can create dynamic reports, dashboards, and presentations using Excel and PowerPoint, making it easier to share insights across the organization.
- **Interactive Analysis:** The tool allows for interactive data exploration, letting users drill down into specific data points for a more detailed understanding of their business metrics.
- **Collaboration Features:** SAP analysis for Microsoft Office supports collaborative features, allowing teams to work together on data analysis and reporting seamlessly.

The Benefits of Using SAP Analysis for Microsoft Office

Integrating SAP analysis for Microsoft Office into your business processes can yield several benefits:

1. Enhanced Productivity

By utilizing familiar Office tools, employees can quickly adapt to using SAP analysis without extensive training. This reduces the time spent on learning new software and allows for a more efficient workflow.

2. Improved Data Visualization

With the analytical capabilities of SAP combined with the visualization tools in Excel and PowerPoint, users can create compelling visual reports that help stakeholders grasp complex data more easily.

3. Real-Time Insights

The capability to access real-time data ensures that decision-makers have the most current information available, enabling them to respond quickly to changing business conditions.

4. Better Decision-Making

By providing advanced analytical tools and real-time insights, SAP analysis for Microsoft Office empowers organizations to make data-driven decisions that can lead to improved performance and competitiveness.

Getting Started with SAP Analysis for Microsoft Office

To begin using SAP analysis for Microsoft Office, follow these steps:

1. Installation

- Download the SAP analysis for Microsoft Office add-in from the SAP website or your organization's software repository.
- Follow the installation instructions provided in the user guide to properly integrate the add-in with your Office applications.

2. Connecting to SAP Data Sources

- Open Excel or PowerPoint and navigate to the SAP analysis tab.
- Choose the appropriate data source (SAP BW, SAP HANA, or SAP Analytics Cloud) and enter your credentials.
- Select the specific data model or report you wish to analyze.

3. Creating Reports and Dashboards

- Utilize the data connectivity features to pull relevant data into your spreadsheet or presentation.
- Use Excel's built-in functions and features to manipulate and analyze the data as needed.
- For PowerPoint, create visually appealing slides that summarize key insights from your analysis.

Best Practices for SAP Analysis for Microsoft Office

To maximize the effectiveness of SAP analysis for Microsoft Office, consider the following best practices:

1. Leverage Templates

Create templates for common reports and dashboards. This will save time and ensure consistency in your reporting format, making it easier for stakeholders to interpret the data.

2. Regularly Update Data Sources

Ensure that your data connections are regularly updated to reflect the most current information. This helps maintain the accuracy and relevance of your

analyses.

3. Collaborate Effectively

Encourage team collaboration by using shared documents and cloud storage. This allows multiple users to work simultaneously on reports and analyses, fostering a cooperative environment.

4. Train Your Team

Invest time in training sessions for your employees to familiarize them with both the SAP analysis tool and the analytical processes. A well-trained team can leverage the full potential of the software, improving overall productivity.

5. Monitor Performance Metrics

Regularly assess the effectiveness of your reporting and analysis efforts. Monitor key performance indicators (KPIs) to ensure that your analyses are providing valuable insights that drive decision-making.

Conclusion

In an era where data-driven decision-making is paramount, **SAP analysis for Microsoft Office** stands out as a powerful tool that bridges the gap between complex SAP data and user-friendly Office applications. By leveraging this integration, organizations can enhance productivity, improve data visualization, and make better-informed decisions. As businesses continue to navigate the complexities of data management, embracing solutions like SAP analysis for Microsoft Office will be crucial for maintaining a competitive edge in the marketplace. By following the best practices outlined in this article, companies can ensure they are getting the most out of this valuable analytical tool.

Frequently Asked Questions

What is SAP Analysis for Microsoft Office?

SAP Analysis for Microsoft Office is an Excel add-in that allows users to access and analyze SAP data directly within Microsoft Excel, providing tools for reporting and data visualization.

How can I install SAP Analysis for Microsoft Office?

To install SAP Analysis for Microsoft Office, you need to download the installation package from the SAP Support Portal, run the installer, and follow the prompts to complete the installation.

What are the main features of SAP Analysis for Microsoft Office?

Key features include integration with SAP BW, SAP HANA, and SAP BusinessObjects, support for multi-dimensional data analysis, pivot tables, and the ability to create dynamic reports and dashboards.

Can SAP Analysis for Microsoft Office connect to SAP HANA databases?

Yes, SAP Analysis for Microsoft Office can connect to SAP HANA databases, allowing users to perform real-time data analysis and reporting directly from Excel.

Is SAP Analysis for Microsoft Office compatible with all versions of Microsoft Excel?

SAP Analysis for Microsoft Office is compatible with various versions of Microsoft Excel, typically from Excel 2010 onward, but it's essential to check the specific version compatibility in the official documentation.

How do I refresh data in SAP Analysis for Microsoft Office?

To refresh data in SAP Analysis for Microsoft Office, users can click the 'Refresh' button in the Analysis toolbar or use the shortcut key 'F5' to update the data from the connected SAP source.

What types of data sources can SAP Analysis for Microsoft Office connect to?

SAP Analysis for Microsoft Office can connect to various SAP data sources, including SAP BW, SAP HANA, SAP BusinessObjects, and other OLAP sources, enabling versatile data analysis.

Can I create and save reports in SAP Analysis for Microsoft Office?

Yes, users can create reports using SAP Analysis for Microsoft Office and save them as Excel files, allowing for easy sharing and collaboration with others.

What are the benefits of using SAP Analysis for Microsoft Office over traditional reporting tools?

Benefits include a more user-friendly interface with Excel, real-time data access, dynamic reporting capabilities, and the ability to leverage Excel's powerful functions and features for advanced analysis.

Find other PDF article:

<https://soc.up.edu.ph/35-bold/files?docid=WAr74-4842&title=joint-staff-sexual-assault-prevention-and-response-training.pdf>

Sap Analysis For Microsoft Office

SAP ERP□□□□□? - □□

“SAP ERP 4.0 SAP” SAP ...

□□□□Sep□□□□□19800□□□□1□□□□□□□□□...

Sap198001 sap ...

ERP SAP MES 統合プラットフォーム - 概要

SAP SAP ERP MES ERP MES? MES MES
MES ...

SAPфорум.RU • Главная страница

Форум по продуктам компании SAPПредыдущее посещение: Пт, июл 25 2025, 23:04 Текущее время: Пт, июл 25 2025, 23:04

SAP -

SAP SAP SAP SAP SAP PA SAP SAP SAP SAP PA ...

□□□□SAP□□□□□□□□□□□□□□□□ - □□

SAP SAP SAP SAP ...

□□□SAP S4 HANA□ - □□

SAP HANA 数据库 SYBASE 数据库 1987 年发明 T-SQL 语言 windows 操作系统 sql server 数据库 数据库 sybase SAP 数据库 ...

□□□SAP□□□□□□ - □□

☐ SAP ☐ 3 ☐

☐ ...

SAPфорум.RU • Просмотр темы - Полномочия на программы, ...

Nov 23, 2005 · Страница 1 из 1 Список форумов » Технические компоненты » Форум по администрированию SAP Часовой пояс: UTC + 4 часа Сейчас этот форум ...

Wiki

Вне SAP Проекты внедрения и поддержка Форум по управлению проектами Форум по послестартовой поддержке SAP Begin 317 1

SAP ERP????? - ??

“SAP ERP 4.0 SAP” — SAP ...

Sap **1980** **1** ...

198001 1 sap 100%

ERP SAP MES -

SAP ERP MES ERP MES? MES MES ...

SAPфорум.RU • Главная страница

Форум по продуктам компании SAP
Предыдущее посещение: Пт, июл 25 2025, 23:04
Текущее время: Пт, июл 25 2025, 23:04

SAP -

SAP SAP PA SAP ... 30

SAP -

SAP SAP SAP SAP SAP ... 36

SAP S4 HANA -

SAP HANA SYBASE 1987 T-SQL windows sql server sybase SAP oracle

SAP -

SAP 3 ...

SAPфорум.RU • Просмотр темы - Полномочия на программы, ...

Nov 23, 2005 · Страница 1 из 1
Список форумов » Технические компоненты » Форум по администрированию SAP
Часовой пояс: UTC + 4 часа
Сейчас этот форум просматривают: нет зарегистрированных пользователей

Wiki

Вне SAP
Проекты внедрения и поддержка
Форум по управлению проектами
Форум по послестартовой поддержке SAP
Begin 317 1

Unlock the power of SAP analysis for Microsoft Office! Discover how to enhance your data insights and streamline reporting. Learn more today!

[Back to Home](#)