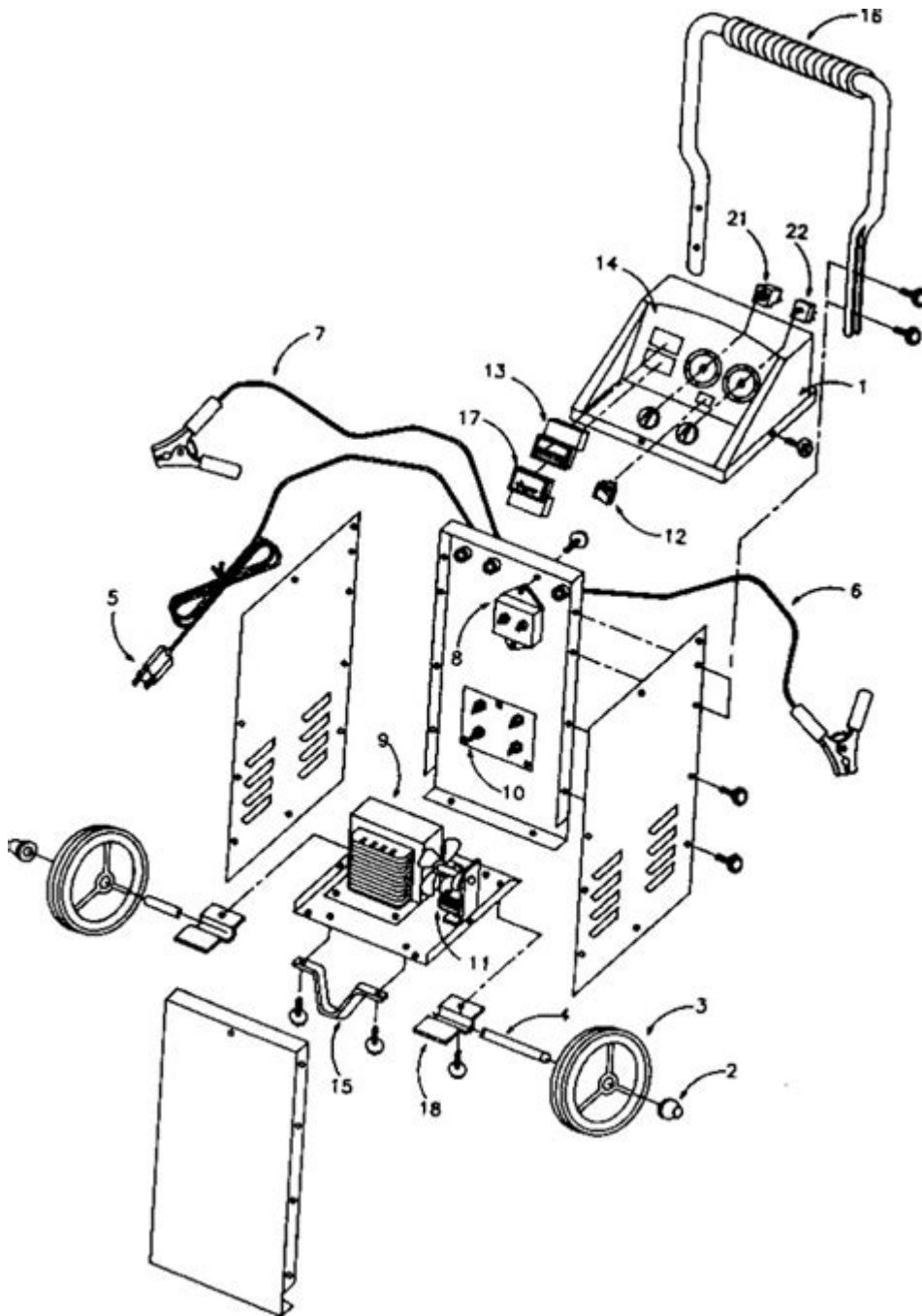


Schumacher Battery Charger Wiring Diagram



Schumacher battery charger wiring diagram is an essential tool for anyone looking to maintain or charge their batteries effectively. Schumacher is known for its high-quality battery chargers that cater to a variety of battery types, including lead-acid, gel, and AGM batteries. Understanding the wiring diagram for these chargers not only helps in using them correctly but also ensures safety during the charging process. In this article, we will delve into the intricacies of Schumacher battery charger wiring diagrams, their components, and how to use them safely.

Understanding Battery Chargers

Before getting into the specifics of Schumacher battery chargers, it's helpful to understand the general concept of battery charging. A battery charger is a device that provides electrical energy to recharge batteries. This process involves converting AC (alternating current) from the power supply into DC (direct current) suitable for battery charging.

Types of Battery Chargers

Battery chargers come in various types, including:

1. Trickle Chargers - Designed to provide a small, continuous current to maintain the battery's charge.
2. Smart Chargers - These automatically adjust the charging rate based on the battery's condition and type.
3. Jump Starters - Provide a high burst of current to start a vehicle with a dead battery.
4. Maintenance Chargers - Keep a battery at optimal charge levels without overcharging.

Schumacher offers several models that may fall into these categories, each with its own wiring diagram.

Components of a Schumacher Battery Charger

Understanding the components of a Schumacher battery charger is crucial to interpreting the wiring diagram. Here are the primary components:

1. Transformer - Converts AC voltage from the mains supply to a lower voltage.
2. Rectifier - Converts AC to DC, allowing the charger to power the battery.
3. Regulator - Controls the output voltage and current to prevent overcharging.

4. Indicators - Lights or gauges that show charging status.
5. Connectors - Cables and clamps used to connect the charger to the battery.
6. Fuses - Provide protection against overloads and short circuits.

Wiring Diagram Overview

The wiring diagram for a Schumacher battery charger typically includes:

- Input Connections: AC power supply connections.
- Output Connections: DC connections to the battery.
- Control Circuit: Wiring for indicators and safety features.
- Protection Devices: Includes fuses and circuit breakers.

Most diagrams will follow a similar structure but may vary slightly between models.

How to Read a Schumacher Battery Charger Wiring Diagram

Reading a wiring diagram can seem daunting, but it follows a logical structure. Here's a step-by-step approach:

1. Identify the Power Source: Locate the input connections on the diagram, usually marked as AC.
2. Trace the Circuit Path: Follow the lines from the AC input through the transformer and rectifier to the output.
3. Look for Component Symbols: Familiarize yourself with common electrical symbols used in the diagram, such as:
 - Transformer: Usually depicted as two parallel lines with a dotted line between them.
 - Diode: A triangle pointing to a line, indicating current flow direction.
 - Fuse: A rectangle with two end lines to show protection.
4. Check Connection Points: Ensure you understand where each wire connects to other components.

5. Refer to the Legend: Diagrams often come with a legend that explains the symbols used.

Steps to Wire a Schumacher Battery Charger

Wiring a Schumacher battery charger correctly is essential for safety and efficiency. Here's how to do it:

1. Gather Materials:

- Schumacher battery charger
- Connecting cables
- Safety goggles and gloves
- Multimeter (optional)

2. Read the Manual: Always refer to the user manual for specific wiring instructions related to your model.

3. Prepare the Battery:

- Ensure the battery is in a safe location.
- Clean the terminals to ensure good electrical contact.

4. Connect the Charger:

- AC Input: Connect the charger to a power source, ensuring it's turned off before connecting.
- DC Output:
 - Connect the positive (red) clamp to the positive terminal of the battery.
 - Connect the negative (black) clamp to the negative terminal.

5. Check Connections: Ensure that all connections are secure and that there are no exposed wires.

6. Power On the Charger: Turn on the charger and check the indicators for proper operation.

7. Monitor Charging: Keep an eye on the charging process—most smart chargers will indicate when the battery is fully charged.

Safety Precautions

When working with battery chargers, safety should always be a priority. Here are some essential safety precautions to keep in mind:

- Wear Protective Gear: Use goggles and gloves to protect against acid splashes and electrical shock.
- Avoid Sparks: Make connections in a well-ventilated area away from flammable materials.
- Check for Damage: Inspect cables and clamps for any signs of wear or damage before use.
- Follow Manufacturer Guidelines: Always adhere to the instructions provided in the user manual.

Common Issues and Troubleshooting

Even with the best equipment, issues can arise. Here are some common problems and how to troubleshoot them:

1. Charger Won't Turn On:

- Check if it is plugged in properly.
- Inspect the fuse for any signs of blown fuses.

2. Slow Charging:

- Ensure the battery is not excessively discharged.
- Check the connections; poor contact can slow down the charging process.

3. Overheating:

- Ensure the charger is in a well-ventilated area.
- Disconnect and allow it to cool down before continuing.

4. Indicator Lights Not Working:

- Check the internal connections for any loose wiring.
- Consult the wiring diagram to ensure all components are connected properly.

Conclusion

Understanding the Schumacher battery charger wiring diagram is a valuable skill for anyone who regularly works with batteries. From maintaining your vehicle's battery to ensuring that power tools are always ready to go, these chargers provide essential functionality. By familiarizing yourself with the components, learning how to read the wiring diagram, and following safety precautions, you can harness the full potential of your Schumacher battery charger. Remember, when in doubt, always consult the manual or a professional to ensure safe and efficient operation.

Frequently Asked Questions

What is a Schumacher battery charger wiring diagram used for?

A Schumacher battery charger wiring diagram is used to illustrate the connections and layout of the various components in the charger, helping users understand how to properly connect it to a battery.

Where can I find a reliable Schumacher battery charger wiring diagram?

Reliable Schumacher battery charger wiring diagrams can typically be found in the user manual that comes with the charger, on the manufacturer's official website, or in automotive repair forums and communities.

What are the common color codes used in Schumacher battery charger wiring diagrams?

Common color codes include red for positive connections and black for negative connections. However, it's essential to consult the specific wiring diagram for your model to avoid confusion.

Can I use a universal wiring diagram for my Schumacher battery charger?

While some basic principles may apply, it's best to use a specific wiring diagram for your Schumacher model to ensure proper connections and avoid damage to the charger or battery.

What should I do if I have trouble understanding my Schumacher battery charger wiring diagram?

If you're having trouble, consider reaching out to customer support from Schumacher, consulting with a professional technician, or looking for instructional videos that illustrate the wiring process.

Find other PDF article:

<https://soc.up.edu.ph/01-text/Book?ID=CiM57-4626&title=15-dangerously-mad-projects-for-the-evil-genius.pdf>

[Schumacher Battery Charger Wiring Diagram](#)

Michael Schumacher - Wikipedia

Michael Schumacher (German: [ˈmɪçaːʔeːl ˈʃuːmaxɐ] ⓘ; born 3 January 1969) is a German former racing driver who competed in Formula One from 1991 to 2006 and from 2010 to 2012. ...

Michael Schumacher | Ski Accident, Ferrari, Coma, Biography, ...

Jun 20, 2025 · Michael Schumacher (born January 3, 1969, Hürth-Hermülhein, West Germany [now in Germany]) is a German race-car driver who set records for the most Formula One (F1) ...

Schumacher | A Designer's Resource for Fabric, Wallpaper & Trim

Shop for fabrics, wallpaper and wallcoverings, trims, pillows, accessories, furniture and more at the official Schumacher website.

[Michael Schumacher's good friend issues sad health update on ...](#)

Jun 24, 2025 · Schumacher is one of the most successful F1 drivers of all time, winning world titles in 1994, 1995 and five consecutive years from 2000 to 2004. He also racked up 71 ...

Michael Schumacher Races, Wins and Teams | F1 Driver | F1 History

Michael Schumacher, one of the greatest F1 drivers in the sport's history, drove for various teams, including Jordan, Benetton, Ferrari, and Mercedes and won a record-equalling seven World ...

Michael Schumacher's heartbreaking update from F1 legend's ...

Jun 21, 2025 · Flavio Briatore, a close friend and former boss of Michael Schumacher, has given an emotional update on the Formula 1 legend's condition. Schumacher sustained a serious ...

[Michael Schumacher Tragic Health Update: F1 Legend 'Can No](#)

Mar 30, 2025 · Michael Schumacher is reportedly no longer able to speak and needs "constant care" from his family and caregivers. According to the latest media reports, Schumacher ...

News - Michael Schumacher

Get all the up-to-date information by and about Michael Schumacher! Learn more about his most important events, activities and other interesting news.

Michael Schumacher biography

Michael Schumacher is the most successful F1 driver ever, winning the most victories, most championship points and a record seven World Drivers' Championship Titles.

[Michael Schumacher now: Skiing accident means F1 icon is out of ...](#)

Jun 8, 2025 · F1 legend Michael Schumacher will go down in history as one of the greatest racing drivers of all time. But Schumacher's life changed dramatically when he suffered a horrific ...

[Michael Schumacher - Wikipedia](#)

Michael Schumacher (German: [ˈmɪçaːʔeːl ˈjuːmaxe] ⓘ; born 3 January 1969) is a German former racing driver who competed in Formula One from 1991 to 2006 and from 2010 to 2012. ...

Michael Schumacher | Ski Accident, Ferrari, Coma, Biography, ...

Jun 20, 2025 · Michael Schumacher (born January 3, 1969, Hürth-Hermülhein, West Germany [now in Germany]) is a German race-car driver who set records for the most Formula One (F1) Grand ...

Schumacher | A Designer's Resource for Fabric, Wallpaper & Trim

Shop for fabrics, wallpaper and wallcoverings, trims, pillows, accessories, furniture and more at the official Schumacher website.

Michael Schumacher's good friend issues sad health update on ...

Jun 24, 2025 · Schumacher is one of the most successful F1 drivers of all time, winning world titles in 1994, 1995 and five consecutive years from 2000 to 2004. He also racked up 71 fastest laps ...

[Michael Schumacher Races, Wins and Teams | F1 Driver | F1 History](#)

Michael Schumacher, one of the greatest F1 drivers in the sport's history, drove for various teams, including Jordan, Benetton, Ferrari, and Mercedes and won a record-equalling seven World ...

[Michael Schumacher's heartbreaking update from F1 legend's ...](#)

Jun 21, 2025 · Flavio Briatore, a close friend and former boss of Michael Schumacher, has given an emotional update on the Formula 1 legend's condition. Schumacher sustained a serious brain ...

Michael Schumacher Tragic Health Update: F1 Legend 'Can No

Mar 30, 2025 · Michael Schumacher is reportedly no longer able to speak and needs "constant care" from his family and caregivers. According to the latest media reports, Schumacher needs ...

News - Michael Schumacher

Get all the up-to-date information by and about Michael Schumacher! Learn more about his most important events, activities and other interesting news.

Michael Schumacher biography

Michael Schumacher is the most successful F1 driver ever, winning the most victories, most championship points and a record seven World Drivers' Championship Titles.

Michael Schumacher now: Skiing accident means F1 icon is out of ...

Jun 8, 2025 · F1 legend Michael Schumacher will go down in history as one of the greatest racing drivers of all time. But Schumacher's life changed dramatically when he suffered a horrific skiing ...

"Unlock the secrets of your Schumacher battery charger with our detailed wiring diagram. Learn how to troubleshoot and optimize your charger today!"

[Back to Home](#)