

Sat Math Question Of The Day

12

$$y = a(x - 2)(x + 4)$$

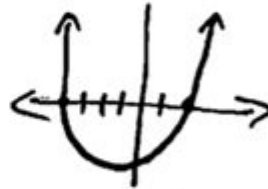
In the quadratic equation above, a is a nonzero constant. The graph of the equation in the xy -plane is a parabola with vertex (c, d) . Which of the following is equal to d ?

- A) $-9a$
- B) $-8a$
- C) $-5a$
- D) $-2a$

TRICK: set $y = 0$.

$$0 = a(x - 2)(x + 4)$$

$$x = 2, -4$$



find midpoint.

$$\frac{2 - 4}{2} = \frac{-2}{2} = -1$$

CONTINUE

plus in $x = -1$

$$y = a(-1 - 2)(-1 + 4) = a(-3)(3) = -9a$$

SAT Math Question of the Day is an excellent resource for students preparing for one of the most important assessments in their academic careers. The SAT, or Scholastic Assessment Test, is a standardized test widely used for college admissions in the United States. The math section of the SAT can be particularly challenging, as it tests a range of mathematical concepts and problem-solving skills. In this article, we will explore the SAT Math Question of the Day, its structure, tips for effective preparation, common types of questions, and strategies to improve your performance.

Understanding the SAT Math Section

The SAT Math section is divided into two parts: one that allows the use of a calculator and one that does not. This structure is designed to assess a student's mathematical abilities and their understanding of concepts rather than their computational skills.

Structure of the SAT Math Section

1. Total Questions: The Math section consists of 58 questions.
2. Time Allotted: Students have a total of 80 minutes to complete the section.
 - 25 minutes for 20 questions (No Calculator)

- 55 minutes for 38 questions (Calculator Allowed)

3. Scoring: Each question is worth one point, and there is no penalty for incorrect answers. The total score for the Math section ranges from 200 to 800.

Content Areas Covered

The SAT Math section covers a variety of topics, including but not limited to:

- Heart of Algebra: Linear equations, inequalities, and systems of equations.
- Problem Solving and Data Analysis: Ratios, percentages, and data interpretation from tables and graphs.
- Passport to Advanced Math: Quadratic equations, polynomial expressions, and functions.
- Additional Topics in Math: Geometry, trigonometry, and complex numbers.

The Importance of Daily Practice

Engaging with an SAT Math Question of the Day is a strategic way to enhance your mathematical skills and familiarity with the test format. Here's why daily practice is essential:

1. Reinforcement of Concepts: Regularly solving math problems helps reinforce the concepts you have learned.
2. Familiarity with Test Format: The SAT has a unique style and format, and daily practice helps you become accustomed to it.
3. Time Management Skills: Practicing under timed conditions helps you develop the ability to manage your time effectively during the actual test.
4. Identifying Weak Areas: Regular practice allows you to identify topics where you may need additional review or tutoring.

Accessing the SAT Math Question of the Day

There are several ways to access the SAT Math Question of the Day. Here are some popular resources:

1. Official SAT Website: The College Board, which administers the SAT, provides a daily math question on its official website.
2. Prep Books: Many SAT prep books come with daily practice questions or exercises that can be done at your pace.
3. Mobile Apps: Numerous mobile applications are designed specifically for SAT preparation and include a daily question feature.
4. Online Forums and Study Groups: Joining online forums or study groups can provide access to a variety of resources, including daily questions posted by other students or educators.

Common Types of SAT Math Questions

Understanding the common types of questions you will encounter on the SAT can help you prepare more effectively. Here are some prevalent formats:

Multiple-Choice Questions

These questions provide four answer choices, and students must select the correct one. They may involve:

- Solving equations.
- Analyzing graphs.
- Working with word problems.

Grid-In Questions

Grid-in questions require students to provide their answer in a grid format rather than choosing from multiple options. This format tests:

- Numerical reasoning.
- The ability to solve problems without answer choices to guide you.

Real-World Context Problems

Some questions are framed in real-world scenarios, requiring you to apply mathematical concepts. These may involve:

- Financial literacy, such as calculating interest or budgeting.
- Data interpretation, such as analyzing trends or statistics.

Effective Strategies for SAT Math Preparation

To maximize your performance in the SAT Math section, consider implementing the following strategies:

1. Review Fundamental Concepts

Ensure that you have a solid understanding of the core math concepts covered in the SAT. Reviewing algebra, geometry, and basic trigonometry is essential.

2. Take Practice Tests

Regularly taking full-length practice tests can help simulate the test-day experience. Aim to:

- Complete the test in a timed setting.
- Review incorrect answers to understand your mistakes.

3. Focus on Weak Areas

Use your practice test results to identify areas where you struggle. Spend extra time reviewing those topics, utilizing resources like:

- Online tutorials.
- Study groups.
- Tutoring services.

4. Develop a Study Schedule

Creating a structured study plan can enhance your preparation. Consider the following tips:

- Set specific goals for each study session.
- Incorporate a mix of question types.
- Allocate time for both practice and review.

5. Use Process of Elimination

In multiple-choice questions, use the process of elimination to increase your chances of selecting the correct answer. Even if you are unsure, eliminating obviously incorrect choices can help narrow down your options.

6. Practice Mental Math

While calculators are allowed for one part of the SAT, being proficient in mental math can save you time and help you solve problems more efficiently.

Conclusion

In summary, engaging with the SAT Math Question of the Day is a valuable part of your SAT preparation strategy. By understanding the structure of the math section, regularly practicing, and employing effective study strategies, you can improve your skills and confidence. The SAT is a

critical step in your academic journey, and mastering the math section can significantly impact your overall score and college admission prospects. Embrace the challenge, stay consistent, and watch your math abilities flourish!

Frequently Asked Questions

What is the purpose of the SAT Math Question of the Day?

The SAT Math Question of the Day helps students practice their math skills and familiarize themselves with the types of questions that will appear on the SAT exam.

How can students benefit from daily practice with the SAT Math Question of the Day?

Daily practice can improve students' problem-solving speed, enhance their understanding of mathematical concepts, and boost their confidence for the actual test.

Where can students find the SAT Math Question of the Day?

Students can find the SAT Math Question of the Day on official SAT prep websites, educational apps, and various online platforms dedicated to SAT preparation.

Are the SAT Math Questions of the Day representative of the actual SAT exam?

Yes, the SAT Math Questions of the Day are designed to reflect the style and difficulty level of questions that students will encounter on the actual SAT exam.

How can students track their progress with the SAT Math Question of the Day?

Students can track their progress by keeping a log of their answers, reviewing explanations for each question, and noting areas where they need improvement.

What types of math concepts are typically covered in the SAT Math Question of the Day?

The SAT Math Question of the Day covers a range of concepts including algebra, geometry, statistics, and problem-solving skills that are essential for the SAT math section.

Find other PDF article:

<https://soc.up.edu.ph/12-quote/pdf?dataid=KdG79-8265&title=chemistry-in-biology-study-guide-answers.pdf>

Sat Math Question Of The Day

[sat](#) - 0

SAT Scholastic Assessment Test (College Board CB) ...

80006SAT700+ || TD

Dec 13, 2021 · SAT SAT ...

FAT SAT? -

SAT 3. SAT ...

A-level IB AP SAT ACT -

SAT Scholastic Aptitude Test 2016 ...

SAT -

46 SAT SAT Essay SAT ...

[sat](#) - 0

SAT Scholastic Assessment Test (College Board CB) ACT (American College Test) ...

80006SAT700+ || TD

Dec 13, 2021 · SAT SAT 1530 SAT TA ...

FAT SAT? -

SAT 3. SAT ...

A-level IB AP SAT ACT -

SAT Scholastic Aptitude Test 2016 SAT 1600 ...

SAT -

46 SAT SAT Essay SAT ...

SAT -

SAT SAT SAT

SAT SAT -

SAT “” College Board ...

SAT -

Jun 17, 2025 · SAT SAT 1 ...

SIT SAT -

「SATのスコアはM1500で、2015年のSATのスコアはSATのスコアは“”
」のスコア ...

TOP30 SAT -

SAT SAT ...

Boost your SAT prep with our 'SAT Math Question of the Day'! Get daily practice

[Back to Home](#)