

# Schwinn Bike Computer Manual

## Mounting Bracket

Attach the mounting bracket to the right side of the handlebar by using a screwdriver as shown in Fig. 5. Use the rubber shims as shown in Fig. 6 to ensure that the bracket is secure. Adjust the position of the bracket as shown in Fig. 6 to desired angle. Tighten screws to secure bracket.

Fig. 5

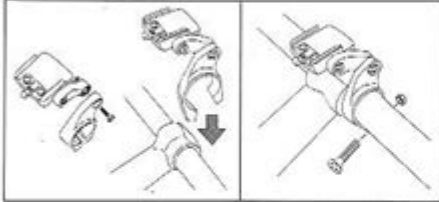
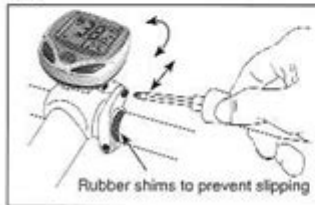


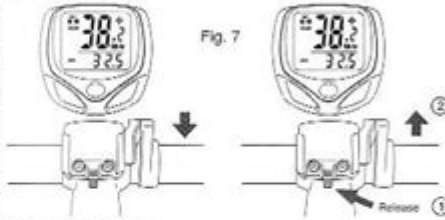
Fig. 6



## Computer

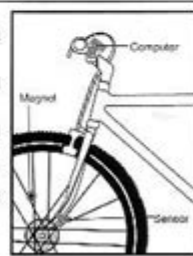
The computer attaches to the mounting shoe by sliding the unit until it snaps firmly into position. Fig. 7.

Important: To remove computer from mounting shoe, wrap forefinger around the front of the mounting shoe, press the release button and push the computer forward with your thumb.



## Sensor Wiring

Route the sensor wire up the fork blade, using cable ties to secure it at the bottom and top. Wire must not hang loosely, but must have enough slack to allow the front wheel and handle bars to turn without putting too much tension on the sensor wire. Too much tension could loosen the wire from the computer and interrupt input to the computer. However, be certain that there is not too much slack and that the wire does not interfere with free movement or spinning of the front wheel. Route the remaining wire around the front brake cable and the handlebar. Excess wire should be carefully looped and secured to the stem with a cable tie.



Schwinn bike computer manual is an essential resource for cyclists who seek to enhance their biking experience by utilizing the various features that Schwinn bike computers offer. These devices provide critical information such as speed, distance, time, and cadence, helping riders to monitor their performance and improve their training regimen. This article will guide you through the functionalities, installation, troubleshooting, and maintenance of Schwinn bike computers, ensuring you get the most out of your cycling experience.

## Understanding Your Schwinn Bike Computer

Schwinn bike computers are designed to provide accurate data to cyclists of all levels. Before diving into the manual, it is essential to understand the core features and functions of your bike computer.

## Key Features

1. Speed Measurement: Displays current speed, average speed, and maximum speed.
2. Distance Tracking: Records total distance, trip distance, and odometer readings.
3. Time Functions: Includes a clock, trip time, and total ride time.
4. Cadence Measurement: For advanced models, measures pedaling speed.
5. Backlight: Facilitates visibility in low-light conditions.
6. Water Resistance: Many models are designed to be water-resistant, ensuring durability in various weather conditions.
7. Multi-Sport Functions: Some models cater to different sports, making them versatile for cross-training.

## Installing Your Schwinn Bike Computer

Proper installation is crucial for accurate readings. Follow these steps for a successful setup.

### Tools Required

- Phillips screwdriver
- Allen wrench (if needed for your bike)
- Tape measure or ruler
- Marker or tape (to mark positions)

### Installation Steps

1. Choose a Location: Select a spot on the handlebars or stem that allows easy visibility while riding.
2. Attach the Mounting Bracket:

- Use the provided screws to attach the mounting bracket to your chosen position.
  - Ensure it is firmly secured but avoid overtightening to prevent damage.
3. Install the Sensor:
- The speed sensor should be mounted on the front fork, aligned with the magnet on the wheel.
  - The magnet should be positioned within 2-5 mm of the sensor for accurate readings.
4. Run the Wires:
- Route the wires neatly along the bike frame. Use zip ties to secure them if necessary, avoiding interference with moving parts.
5. Connect the Computer:
- Attach the bike computer to the mounting bracket.
  - Ensure it clicks into place securely.

## Calibration

After installation, calibration is necessary to ensure accurate readings. Follow these steps:

1. Set Wheel Size: Consult the manual for the correct wheel size and input this into your bike computer.
2. Test Ride: Take a short ride while monitoring the readings. Adjust if necessary.

## Using Your Schwinn Bike Computer

Once installed and calibrated, it's time to learn how to operate your Schwinn bike computer effectively.

## Basic Operations

1. Power On/Off: Most models turn on automatically when the sensor detects movement. You can

usually turn it off after a ride to conserve battery life.

2. Mode Selection: Use the mode button to cycle through the different displays, including speed, distance, and time.
3. Reset Function: To reset trip data, press and hold the reset button for a few seconds.

## Advanced Features

For models that support advanced functions, familiarize yourself with the following:

- Cadence Tracking: If your model includes cadence, ensure the sensor is installed correctly on the crank arm.
- Heart Rate Monitoring: Some Schwinn bike computers are compatible with heart rate monitors. Connect via Bluetooth or ANT+ as per the instructions in the manual.
- Backlight Activation: Activate the backlight for better visibility in low-light conditions by pressing the designated button.

## Troubleshooting Common Issues

Even the most reliable bike computers can experience issues. Here's a list of common problems and solutions.

### Common Issues

1. No Display:
  - Check if the computer is powered on.
  - Ensure the battery is installed correctly and is not depleted.

## 2. Inaccurate Speed/Distance Readings:

- Verify that the wheel size is set correctly.
- Check the alignment of the sensor and magnet.

## 3. Sensor Not Detected:

- Ensure that the sensor is securely mounted and that the magnet is within the correct range.
- Inspect for any physical damage to the sensor.

## 4. Battery Issues:

- Replace the battery if readings are erratic or the display is faint.
- Refer to the manual for the specific battery type required.

# Maintenance of Your Schwinn Bike Computer

Maintaining your bike computer will extend its lifespan and ensure optimal performance.

## Regular Cleaning

- Wipe the display with a soft cloth to remove dirt and grime.
- Clean the sensor and magnet with a dry cloth to ensure accurate readings.

## Battery Replacement

- Regularly check the battery life indicator.
- Replace the battery as per the manual instructions, ensuring the correct orientation.

## Software Updates

- Some Schwinn bike computers may require firmware updates. Check the Schwinn website or the manual for instructions on how to update your device.

## Conclusion

The Schwinn bike computer manual is not just a guide but a vital tool for any cyclist looking to enhance their riding experience. By understanding the features, properly installing the device, and maintaining it, you can gain valuable insights into your performance. Whether you're a casual rider or a dedicated athlete, leveraging the capabilities of your Schwinn bike computer can lead to improved fitness, better training results, and a more enjoyable ride. Always refer to the manual for specific instructions tailored to your model, ensuring you maximize the device's potential. Happy cycling!

## Frequently Asked Questions

### Where can I find the Schwinn bike computer manual?

You can find the Schwinn bike computer manual on the official Schwinn website under the 'Support' or 'Manuals' section, or by searching for your specific bike model along with 'manual' in a search engine.

### What features are typically included in a Schwinn bike computer?

Schwinn bike computers typically include features such as current speed, average speed, distance traveled, trip time, and sometimes heart rate monitoring and calorie tracking.

### How do I reset my Schwinn bike computer?

To reset your Schwinn bike computer, locate the 'reset' button on the device. Press and hold it for a few seconds until the display resets to zero. Refer to your manual for exact instructions based on the

model.

## Is there a troubleshooting guide for Schwinn bike computers?

Yes, a troubleshooting guide is usually included in the Schwinn bike computer manual. It provides solutions for common issues such as inaccurate readings, display problems, or connectivity issues.

## Can I download the Schwinn bike computer manual in PDF format?

Yes, many Schwinn bike manuals, including those for bike computers, are available for download in PDF format on the official Schwinn website or other online resources.

Find other PDF article:

<https://soc.up.edu.ph/16-news/pdf?docid=qbk86-1442&title=dating-a-man-in-a-relationship.pdf>

## Schwinn Bike Computer Manual

**schwinn** -

schwinn schwinn 1895 1896 “Roadstar” zhi dao  
19 8 6kg ...

Nautilus StairMaster Schwinn Nautilus 10 Vectra  
MiniGym ...

**schwinn** -

schwinn schwinn 1895 ...

Nautilus StairMaster Schwinn Nautilus ...

Find the ultimate Schwinn bike computer manual to enhance your cycling experience. Discover how to set up and optimize your device for peak performance!

[Back to Home](#)