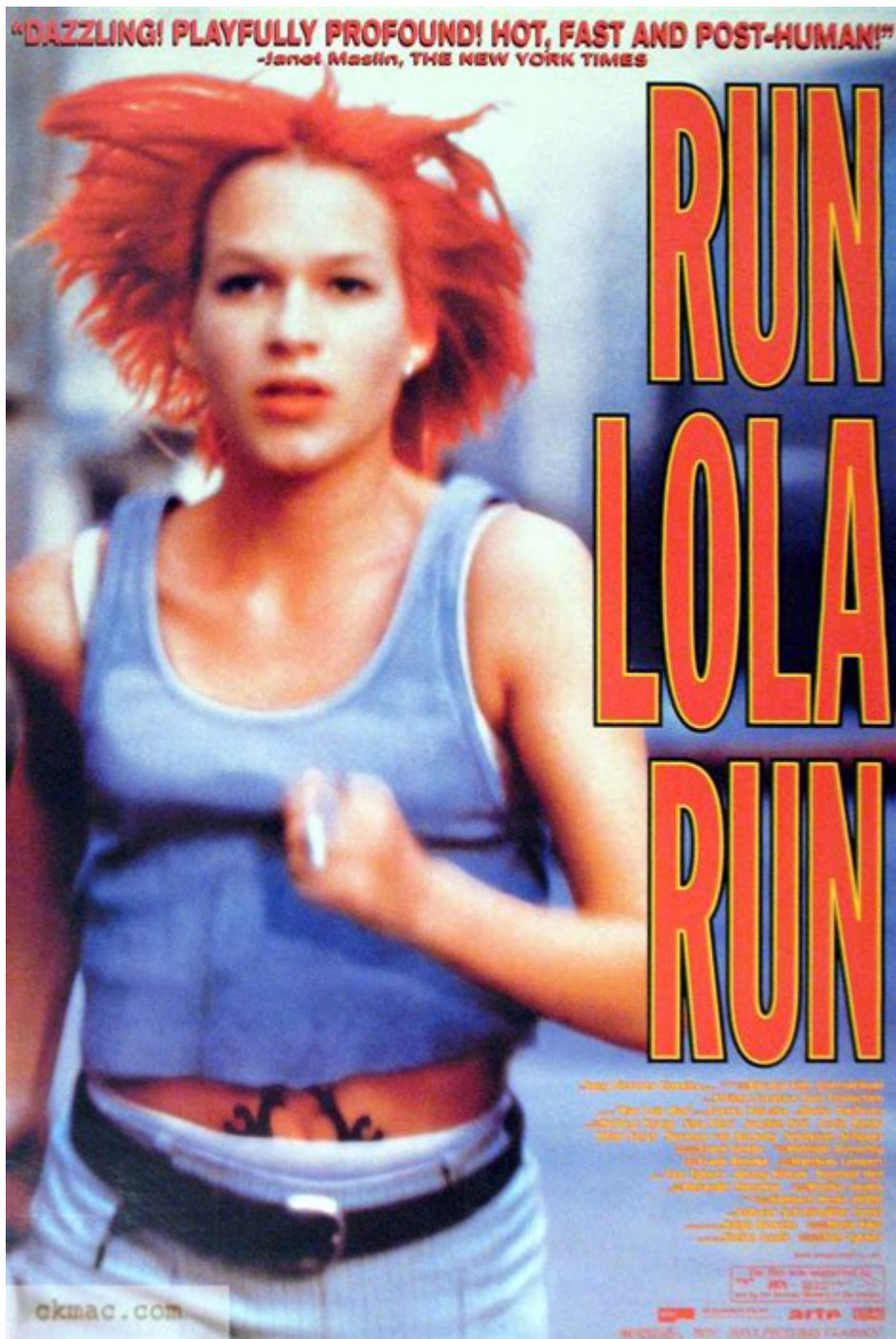


Run Lola Run Analysis



Run Lola Run analysis is an exploration of the intricate narrative structure, thematic depth, and stylistic choices within the German film directed by Tom Tykwer. Released in 1998, "Run Lola Run" (originally titled "Lola rennt") has become a cult classic and is widely studied for its innovative storytelling techniques, vibrant cinematography, and philosophical underpinnings. This article will delve into various aspects of the film, including its plot, character development, themes, and stylistic elements.

Plot Overview

"Run Lola Run" follows the story of Lola, played by Franka Potente, who has 20 minutes to save her boyfriend, Manni, portrayed by Moritz Bleibtreu, from a dangerous situation. Manni has lost a bag containing 100,000 Deutschmarks that he was supposed to deliver to a criminal. If Lola fails, Manni warns that he will resort to desperate measures. The film is structured around three distinct scenarios, each beginning with Lola receiving a phone call from Manni, leading to different outcomes based on her choices and actions.

First Run

In the first run, Lola rushes to find Manni but encounters various obstacles, such as a delay at the bank and an encounter with a homeless man. Despite her frantic efforts, she ultimately fails to reach him in time, leading to tragic consequences.

Second Run

The second run presents a different approach. Lola is more methodical, making different choices and interacting with different characters along the way. This iteration explores the idea of fate and chance, as slight changes lead to drastically different outcomes.

Third Run

The final run sees Lola taking a more aggressive approach, reflecting her determination and love for Manni. The climax of this run introduces a twist that highlights the film's central themes of time, choice, and consequence.

Character Development

The characters in "Run Lola Run" are not only central to the narrative but also serve as vehicles for the film's exploration of existential concepts.

Lola

Lola is a dynamic character whose evolution throughout the film is marked by her relentless pursuit of love and her ability to adapt to changing circumstances. Her determination is palpable, as she embodies the spirit of fighting against time and fate. The audience witnesses her transformation from a frantic young woman to a more resolute and self-aware individual by the film's conclusion.

Manni

Manni, on the other hand, represents the consequences of choices made in desperation. His character illustrates the fragility of human life and relationships, as his fate is inextricably linked to Lola's actions. Manni's initial panic and subsequent resignation highlight the emotional stakes involved in their relationship, serving as a counterpoint to Lola's proactive nature.

Supporting Characters

The supporting characters, including the bank manager, the homeless man, and the woman in the red car, serve to enrich the narrative. Each character's brief interaction with Lola presents an opportunity to explore the film's themes of interconnectedness and the ripple effects of individual choices.

Themes

"Run Lola Run" is rich with thematic content that resonates with viewers on multiple levels.

Time and Its Fluidity

The concept of time is a central theme in "Run Lola Run." The film challenges traditional linear notions of time by presenting three distinct scenarios that unfold in parallel. Each run emphasizes the idea that time is not a rigid construct but rather a fluid entity that can be influenced by choices and actions. This exploration of time invites viewers to consider how small decisions can lead to vastly different outcomes.

Fate vs. Free Will

The tension between fate and free will is another prominent theme in the film. Lola's journey raises questions about the extent to which individuals can shape their destinies. Each run presents a variation of the same events, suggesting that while some aspects of life are predetermined, individuals still possess the agency to affect change. This duality encourages viewers to reflect on their own lives and the choices they make.

Love and Sacrifice

At its core, "Run Lola Run" is a love story that emphasizes the lengths one would go to for love. Lola's determination to save Manni highlights the theme of sacrifice, showcasing the intense emotional bonds that drive individuals to take extraordinary risks. This portrayal of

love as a powerful motivator resonates deeply, making the film not just a thriller but also a poignant exploration of human connection.

Stylistic Elements

The film's stylistic choices significantly contribute to its impact and memorability.

Cinematography

Cinematographer Frank Griebe employs dynamic camera work and vibrant colors to create an engaging visual experience. The use of quick cuts, slow-motion sequences, and unconventional angles enhances the urgency of Lola's quest. The film's aesthetic choices reflect its thematic concerns, immersing viewers in Lola's frantic world.

Editing and Pacing

The editing in "Run Lola Run" is fast-paced and rhythmic, mirroring the urgency of the narrative. The rapid transitions between scenes create a sense of momentum that keeps viewers on the edge of their seats. This pacing is further complemented by the film's soundtrack, which features a pulsating techno score that amplifies the adrenaline-fueled atmosphere.

Narrative Structure

The film's unconventional narrative structure is one of its most distinctive features. By presenting three distinct runs, Tykwer invites viewers to engage with the concept of multiple realities and the impact of individual choices. This structure serves to underscore the film's philosophical inquiries while maintaining a gripping storyline.

Conclusion

In conclusion, "Run Lola Run" is a multifaceted film that transcends conventional storytelling. Through its innovative narrative structure, complex characters, and exploration of profound themes, it challenges audiences to reflect on the nature of time, choice, and love. The film remains a significant work in contemporary cinema, celebrated for its artistic merit and philosophical depth. Its lasting impact continues to inspire discussions about the human experience, making "Run Lola Run" a timeless piece worthy of analysis and appreciation.

Frequently Asked Questions

What are the main themes explored in 'Run Lola Run'?

The main themes include the concept of time, choice and consequence, fate versus free will, and the impact of seemingly minor decisions on one's life.

How does the narrative structure of 'Run Lola Run' contribute to its overall message?

The film's non-linear narrative, with three distinct runs, emphasizes the idea of multiple possibilities and the significance of each choice Lola makes, highlighting the randomness of life.

What role does the visual style play in 'Run Lola Run'?

The film's dynamic visual style, including rapid editing, vibrant colors, and varied camera angles, enhances the urgency of Lola's run and reflects her emotional state, creating a sense of adrenaline and tension.

How does 'Run Lola Run' address the concept of time?

The film treats time as a fluid concept, showcasing how a few seconds can alter outcomes dramatically, thus encouraging viewers to consider how time influences their own lives and decisions.

In what ways does 'Run Lola Run' challenge traditional gender roles?

Lola is portrayed as a strong, determined character who takes charge of her own fate, subverting typical portrayals of women in film by being the active protagonist who drives the plot.

What is the significance of the film's soundtrack in 'Run Lola Run'?

The soundtrack, featuring a mix of electronic and pop music, not only complements the film's fast pace but also enhances emotional moments, creating a rhythmic connection between the action and Lola's journey.

Find other PDF article:

<https://soc.up.edu.ph/26-share/pdf?ID=Qfh02-8318&title=guide-dogs-for-the-blind-jobs.pdf>

Run Lola Run Analysis

DX11 feature level 10.0 is required to run_
Nov 21, 2021 · dx11 feature level 10.0 is required
 ...

-
Aug 30, 2024 · 1. Win+R
2. ...

Win+Rirm steam.run|iexSteam ...
Win+Rirm steam.run|iexSteam 68

Windows 10 ?-
Jan 26, 2019 · windows;
 ...

RPG.RPGVXAce RTP is required to run this game
RPG.RPGVXAce RTP is required to run this game1
 ...

steam -
1 “steam” 2 “O (n_n)O~
1 ...

Windows 105 -
Jan 29, 2021 · App 3/5 3
 ...

out of memoryout of memory_ ...
Sep 7, 2024 · Out of Memory
Out of Memory ...

:OTS/PPAP/PTR?_
1.Off Tool Sample —OTS 2.Production Parts Approval Process —PPAP
3.Production Trial Run —PTR ...

run outrun out of -
run outrun out of1ofrun out ofrun out
 ...

DX11 feature level 10.0 is required to run_
Nov 21, 2021 · dx11 feature level 10.0 is required
 ...

-
Aug 30, 2024 · 1. Win+R
2. ...

Win+Rirm steam.run|iexSteam ...

Win+Rirm steam.run|iexSteam 68

Windows 10

Jan 26, 2019 · windows; ; ; ...

RPG, .RPGVXAce RTP is required to run this game

RPG, .RPGVXAce RTP is required to run this game1 ...

steam -

1 “ ” steam “ ” 2 “ ” 0 (n_n)O~ 1 ...

Windows 105 -

Jan 29, 2021 · App! 3/5 3 ...

out of memoryout of memory_ ...

Sep 7, 2024 · Out of Memory Out of Memory ...

:OTS/PPAP/PTR?_

1.Off Tool Sample —OTS 2.Production Parts Approval Process —PPAP

3.Production Trial Run —PTR ...

run outrun out of -

run outrun out of1 ofrun out ofrun out

Dive into our comprehensive 'Run Lola Run' analysis

[Back to Home](#)