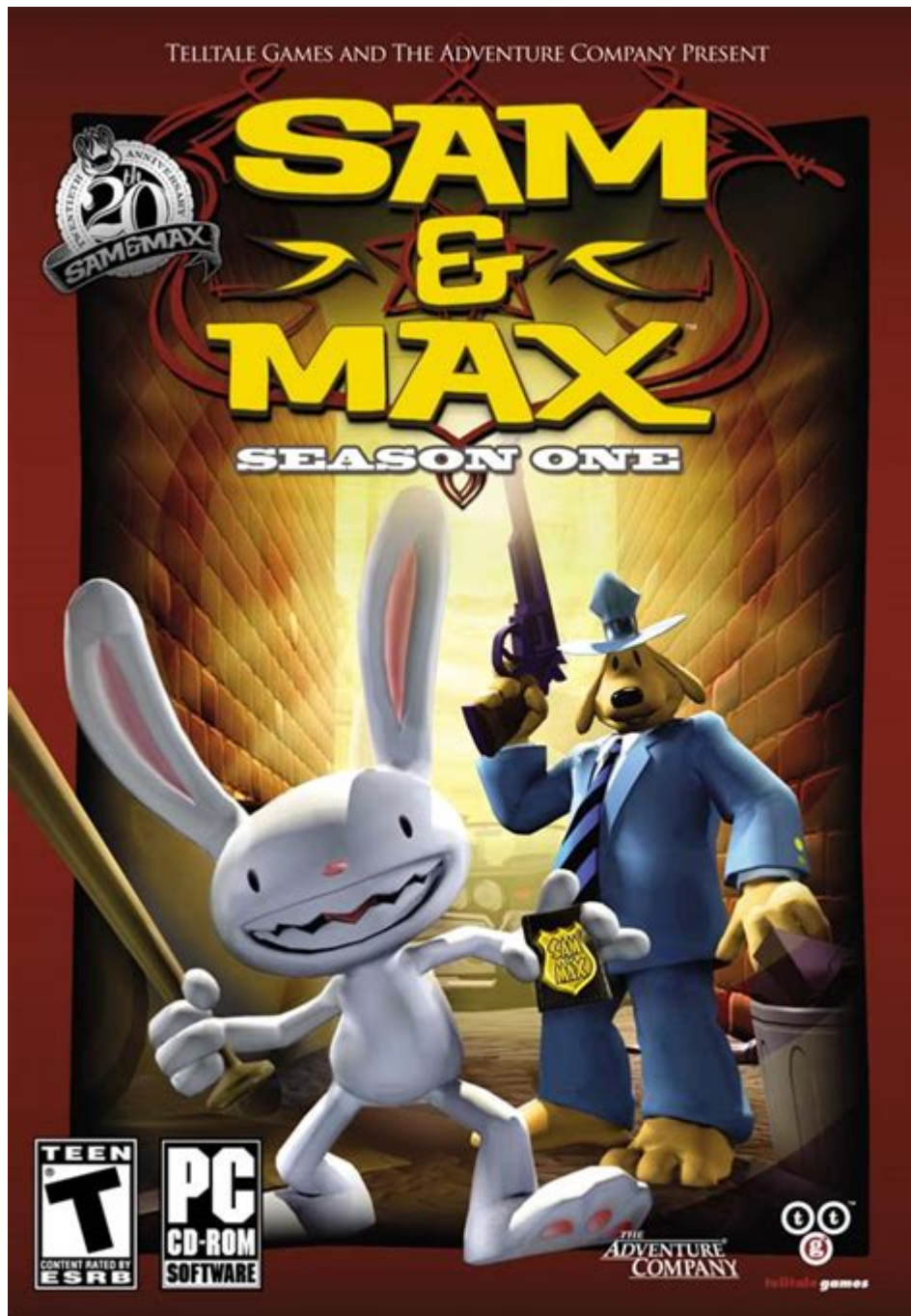


Sam And Max Save The World Guide



Sam and Max Save the World Guide: A Nostalgic Trip into the World of Quirky Adventure

If you are a fan of classic point-and-click adventure games, then Sam and Max Save the World is an iconic title that should be on your radar. Originally released in 2006, this episodic game follows the exploits of a wise-cracking dog named Sam and his hyper-kinetic rabbit partner, Max, as they tackle various mysteries in their unique, offbeat style. The game is known for its clever writing, zany humor, and memorable characters, making it a beloved title among gamers. This guide will provide a comprehensive overview of the game, including its storyline, gameplay mechanics, puzzles, and tips to help

you navigate through this whimsical world.

Overview of Sam and Max Save the World

Developed by Telltale Games, Sam and Max Save the World is based on the comic book characters created by Steve Purcell. The game is structured around six distinct episodes, each featuring a self-contained story that contributes to an overarching narrative. Players take on the role of Sam, who is an anthropomorphic dog and the titular character, while Max serves as his unpredictable sidekick. Together, they embark on a series of adventures that often involve solving mysteries, dealing with bizarre villains, and interacting with a colorful cast of characters.

Game Structure

The game is divided into six episodes:

1. Culture Shock: The duo investigates a series of strange occurrences involving a group of mind control-obsessed street performers.
2. Situation Comedy: Sam and Max dive into the world of television, confronting a dangerous comedy show host.
3. The Mole, The Mob, and The Meatball: A classic mob story with a twist, as Sam and Max find themselves in the middle of a turf war.
4. Abe Lincoln Must Die!: The duo goes head-to-head with the ghost of Abraham Lincoln, who has taken a turn for the sinister.
5. The Tomb of Sammun-Mak: An adventure that takes Sam and Max to Egypt, where they must thwart an ancient curse.
6. Bright Side of the Moon: The finale where Sam and Max face off against a cosmic threat that could destroy their home.

Gameplay Mechanics

Sam and Max Save the World employs a traditional point-and-click interface that encourages exploration and interaction with the environment. Players will find themselves clicking on objects, characters, and locations to progress through the game. Here are some key gameplay mechanics:

Point-and-Click Interaction

- Explore Environments: Players can navigate various locations by clicking on the screen. Each area is filled with interactive objects and characters.
- Collect Items: Throughout the game, players can collect items that may be used later to solve puzzles or complete tasks.

- Dialogue Trees: Engaging with characters involves navigating through dialogue options that can influence the outcome of certain situations.

Puzzles and Challenges

- Inventory Puzzles: Many puzzles require players to combine items from their inventory or use them in specific locations.
- Logic and Problem-Solving: Players must think critically to connect clues and solve challenges that may not always be apparent at first glance.
- Timed Events: Some challenges involve completing actions within a certain timeframe, adding an element of urgency.

Tips for Success

Navigating the wacky world of Sam and Max Save the World can be both entertaining and challenging. Here are some tips to help players succeed:

1. Pay Attention to Dialogue

- The dialogue in the game is filled with hints and clues that can help you progress. Listen carefully to what characters say, as it often provides insight into what you should do next.

2. Explore Thoroughly

- Don't rush through the environments. Take your time to click on everything and uncover hidden items or interactions that may be crucial for solving puzzles.

3. Keep an Eye on Your Inventory

- Regularly check your inventory for items you may have collected. Sometimes, items that seem useless at first can become essential later in the game.

4. Save Frequently

- Make sure to save your game often, especially before attempting a challenging puzzle or decision. This allows you to backtrack if you make a mistake or want to explore different choices.

5. Use a Walkthrough if Needed

- If you find yourself stuck, don't hesitate to consult a walkthrough or guide. While it's rewarding to solve puzzles on your own, sometimes a little guidance can enhance your experience.

Understanding the Characters

The charm of Sam and Max Save the World lies not only in its gameplay but also in its quirky characters. Here are some of the main characters you will encounter:

Sam

Sam is the level-headed and somewhat cynical dog who serves as the voice of reason in the duo. He is known for his dry humor and sharp wit. As the player character, Sam is adept at solving problems and often acts as the brains of the operation.

Max

Max is Sam's impulsive and unpredictable sidekick. He is a "rabbity thing" with a penchant for chaos and destruction. His erratic behavior often leads to hilarious situations, and he provides comic relief throughout the game.

Supporting Cast

- Bosco: The paranoid store owner who runs a convenience store and often provides oddball items for the duo.
- Sybil Pandemik: A former model turned psychologist who offers advice and insights to Sam and Max.
- The Freelance Police: Various characters who assist or hinder Sam and Max on their adventures.

Conclusion

Sam and Max Save the World is more than just a game; it's a delightful experience filled with humor, clever writing, and engaging puzzles. Whether you are revisiting this classic title or playing it for the first time, this guide aims to enhance your journey through the bizarre and hilarious world of

Sam and Max. With its unique blend of adventure, comedy, and memorable characters, it remains a standout title in the realm of point-and-click games. Armed with the tips and insights provided in this guide, you are well-prepared to tackle the challenges that await you in this unforgettable adventure. Enjoy your time solving mysteries alongside the Freelance Police!

Frequently Asked Questions

What is 'Sam and Max Save the World' about?

'Sam and Max Save the World' is a point-and-click adventure game that follows the titular characters, a dog (Sam) and a rabbit (Max), as they solve various cases and confront bizarre challenges in a humorous setting.

Is there a guide available for 'Sam and Max Save the World'?

Yes, there are several guides available online that provide walkthroughs, tips, and strategies for completing the game and solving its puzzles.

What are some common puzzles in 'Sam and Max Save the World'?

Common puzzles include inventory-based challenges, dialogue choices that affect outcomes, and environmental puzzles that require players to interact with objects in creative ways.

How many episodes are in 'Sam and Max Save the World'?

The game originally consists of six episodes, each featuring unique stories and challenges that contribute to an overarching narrative.

What platforms can I play 'Sam and Max Save the World' on?

The game is available on multiple platforms, including PC, Nintendo Switch, Xbox One, and PlayStation 4.

Are there any cheats for 'Sam and Max Save the World'?

Yes, players can use various cheats to unlock features, skip puzzles, or access hidden content, often found in community forums or dedicated gaming websites.

What is the best strategy for solving puzzles in 'Sam and Max Save the World'?

The best strategy is to explore every environment thoroughly, make use of all available items in your inventory, and experiment with different dialogue options with characters.

Can I play 'Sam and Max Save the World' without prior knowledge of the series?

Yes, 'Sam and Max Save the World' is designed to be accessible to new players, and it provides enough context to enjoy the story without prior experience.

What makes 'Sam and Max' characters unique?

Sam and Max are known for their witty banter, distinctive personalities—Sam being the more sensible and level-headed one, while Max is impulsive and chaotic—creating a dynamic that drives the humor and charm of the game.

Where can I find a comprehensive walkthrough for 'Sam and Max Save the World'?

Comprehensive walkthroughs can be found on gaming websites like GameFAQs, YouTube playthrough channels, and dedicated gaming community forums.

Find other PDF article:

<https://soc.up.edu.ph/41-buzz/pdf?ID=UDw05-9185&title=mixed-review-answer-key.pdf>

Sam And Max Save The World Guide

Flytampa Copenhagen - XP12 Scenery - X-Plane.Org Forum

Sep 22, 2023 · Remove the SAM plugin (but keep the embedded SAM_Library somewhere) If you already deleted SAM but use a SAM replacement library (e.g. "FlyAgi - SAM Fallback Library") remove it. If installed remove the "SAM Seasons emulator" plugin. Its functionality is included in openSAM. From within this zip install "openSAM_Library" into "Custom Scenery" "openSAM" ...

SAM ...

RSPrompter []sam[]4[]sam-seg[]sam[]
[]sam[]vit[]backbone[]mask2former[]neck[]head,[]

Meta [] SAM [] - []

SAM[]MASK[]SAM[]sam[]
[]multimask_ouput[]True[]3[] ...

SAM-Track SAM- track (SAM) AoT (DeAOT) ...

Scenery won't load - XP11 General discussion - X-Plane.Org Forum

Jun 6, 2020 · Hello there, I have been experiencing problem with my X-Plane 11 where I can't load scenery that I downloaded. I had put the scenery file in my Custom Scenery folder and ...

-

@ Sam NLPer LLM Sam 19

SAM Ground services, aircraft configuration issue.

Jan 30, 2023 · Note: Your post will require moderator approval before it will be visible.

SAM Ground services, aircraft configuration issue.

Jan 30, 2023 · While Sam Ground service loads the cargo it doesn't load any passengers or luggages. It seems that while it shows the static vehicles the rest don't even appear. When I ...

Unlock the secrets of Sam and Max Save the World with our comprehensive guide! Dive into tips

[Back to Home](#)