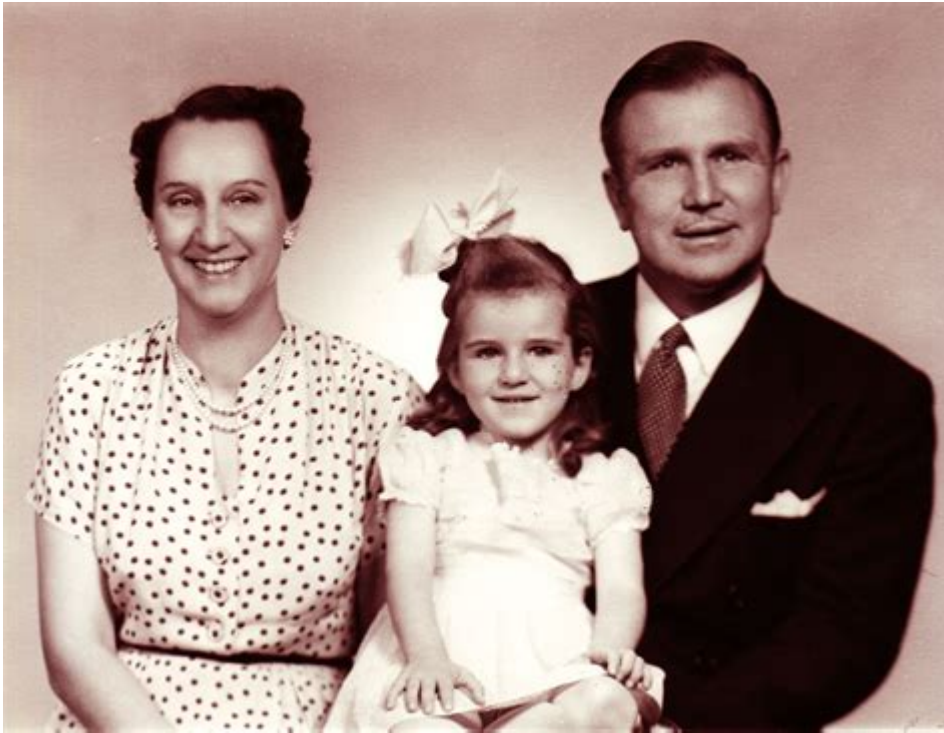


Ruth McGee J Vernon McGee



Ruth McGee J. Vernon McGee were prominent figures in Christian ministry, renowned for their contributions to biblical teaching, radio broadcasting, and theological education. J. Vernon McGee, a pastor and theologian, founded the "Thru the Bible" radio program, which has had a lasting impact on millions around the world. His wife, Ruth McGee, played a vital role in supporting his ministry and contributed significantly to their shared mission. This article delves into the lives, ministries, and legacies of Ruth and J. Vernon McGee, highlighting their commitment to spreading the Gospel and educating Christians about the Bible.

Early Life and Background

J. Vernon McGee's Early Years

J. Vernon McGee was born on June 17, 1904, in Hillsboro, Texas. His early life was marked by a deep interest in the Bible and a commitment to his faith. After graduating from the University of Texas, he pursued theological education at the Southwestern Baptist Theological Seminary. McGee became ordained as a pastor and began his ministry in the early 1930s.

Ruth McGee's Role

Ruth McGee, born Ruth Ann McGee in 1909, was a supportive partner in J. Vernon's ministry. While she may not have been in the spotlight as much as her husband, her influence was profound. Ruth

was instrumental in creating a nurturing home environment that allowed J. Vernon to focus on his pastoral and broadcasting work. Together, they laid the foundation for a ministry that would reach many.

The Ministry of J. Vernon McGee

Pastoral Work

J. Vernon McGee's pastoral career began in the 1930s when he served in various churches. His profound understanding of scripture and engaging teaching style quickly garnered a following. He emphasized the importance of expository preaching, where the Bible is explained in its context, allowing congregants to grasp deeper meanings.

Radio Ministry

In the 1960s, McGee launched the "Thru the Bible" radio program, which aimed to take listeners through the entire Bible in a systematic manner. The program became immensely popular, and McGee's unique ability to explain complicated theological concepts in simple terms resonated with audiences. Key features of the program included:

- **Expository Teaching:** McGee's method of teaching focused on verse-by-verse analysis, encouraging listeners to understand the Bible's message thoroughly.
- **Engaging Style:** His down-to-earth delivery made complex topics accessible, often including anecdotes and illustrations from his own life.
- **Global Reach:** The radio program was broadcast internationally, allowing it to reach millions of listeners in different countries and cultures.

Books and Publications

In addition to his radio ministry, McGee authored numerous books that further elaborated on his teachings. His works include:

1. **Thru the Bible Commentary:** A multi-volume commentary series that provides in-depth analysis of each book of the Bible.
2. **Jesus: The Greatest Life of All:** A biographical account of the life of Jesus, emphasizing His teachings and impact.

3. **The Bible in a Nutshell:** A concise summary of the Bible's message and core themes.

These publications have become essential resources for pastors, students, and laypeople alike, reinforcing McGee's teachings and making the Bible more accessible.

Ruth McGee's Contributions

Support and Partnership

Ruth McGee's contributions to the ministry extended beyond her role as a wife. She was actively involved in supporting J. Vernon in his endeavors, often managing the administrative aspects of the ministry. Her organizational skills and dedication allowed J. Vernon to focus on his pastoral and teaching responsibilities.

Women's Ministry

Ruth McGee was also passionate about women's ministry. She believed in empowering women to take an active role in their spiritual growth and community involvement. Through various programs and initiatives, she encouraged women to study the Bible, engage in prayer, and support one another in their faith journeys.

Legacy of Service

The McGee family's commitment to service did not end with J. Vernon and Ruth. Their children and grandchildren have continued in their footsteps, engaging in various forms of ministry and outreach. The McGee legacy is one of faithful service, a testament to the impact of their lives on the community and the church.

Theological Perspectives

Core Beliefs

Both J. Vernon and Ruth McGee held strong theological convictions that shaped their ministry. Some of their core beliefs included:

- **Authority of Scripture:** They believed the Bible is the inspired Word of God and serves as the

ultimate authority for faith and practice.

- **Salvation through Faith:** They emphasized the necessity of personal faith in Jesus Christ for salvation, highlighting the importance of grace over works.
- **Importance of Evangelism:** Their ministry focused on spreading the Gospel message and reaching the lost, believing that every individual is called to share their faith.

Impact on Christian Education

The McGee family's commitment to sound biblical teaching has influenced Christian education significantly. J. Vernon McGee's commentary series and radio teachings are used in seminaries and churches worldwide. Ruth's advocacy for women's ministry has also inspired many churches to develop programs that empower women in their faith.

Conclusion

Ruth McGee and J. Vernon McGee's lives and ministries serve as a powerful reminder of the impact one couple can have on the Christian community. Through their dedication to teaching, preaching, and serving, they have left an indelible mark on the world. Their legacy continues to inspire generations of believers to engage with the Bible, deepen their faith, and serve others in love. As we reflect on their contributions, we are reminded of the importance of partnership in ministry and the call to share the Gospel with all people.

Frequently Asked Questions

Who is Ruth McGee in relation to J. Vernon McGee?

Ruth McGee is the wife of J. Vernon McGee, a well-known pastor, theologian, and Bible teacher.

What is J. Vernon McGee best known for?

J. Vernon McGee is best known for his radio program 'Thru the Bible,' which provides in-depth Bible teaching and commentary.

What contributions did Ruth McGee make to J. Vernon McGee's ministry?

Ruth McGee supported J. Vernon McGee's ministry through her encouragement, partnership, and involvement in church activities, often helping with administrative tasks.

Did Ruth McGee have a role in the development of 'Thru the Bible'?

While Ruth McGee was not directly involved in the production, she played an essential supportive role in J. Vernon McGee's life and ministry, which included the development of 'Thru the Bible.'

How did J. Vernon McGee and Ruth McGee meet?

J. Vernon McGee and Ruth McGee met while they were both attending the same church in Texas, where their shared faith and values brought them together.

What impact did Ruth McGee have on J. Vernon McGee's theological views?

Ruth McGee provided support and encouragement that allowed J. Vernon McGee to explore and express his theological views more freely, fostering a collaborative environment in their faith journey.

What legacy did Ruth McGee leave behind after her passing?

Ruth McGee's legacy is intertwined with J. Vernon McGee's ministry, as she is remembered for her unwavering support and dedication to their shared mission of spreading the Gospel.

Find other PDF article:

<https://soc.up.edu.ph/52-snap/pdf?ID=TON64-7978&title=science-behind-submarine-implosion.pdf>

[Ruth McGee J Vernon McGee](#)

Store Noblesville - Shady Rays® | Polarized Sunglasses

Check out all things Shady Rays at Hamilton Town Center in Noblesville, Indiana. Shop our premium polarized shades and snow goggles, plus ...

Shady Rays at Hamilton Town Center - A Shopping Center in N...

Shady Rays, located at Hamilton Town Center: Shady Rays is an independent sunglass company selling high-quality, polarized shades in a variety of frame ...

Four new businesses coming soon to Hamilton Town Center ...

Apr 8, 2025 · NOBLESVILLE, Ind — An outdoor shopping destination in Noblesville has announced four new businesses. Shady Rays, J. Crew ...

Kentucky-based Shady Rays expanding to Indiana - WDRB

Jul 17, 2025 · LOUISVILLE, Ky. (WDRB) — A Kentucky-based sunglass company is expanding its retail footprint to Indiana. According to our partners at Louisville ...

Hamilton Town Center Adds Stores - TheTimes of Noblesville

Apr 9, 2025 · Shady Rays: Offering premium polarized and prescription eyewear, Shady Rays offers

high-quality sunglasses, gear and goggles, along ...

Sign In | Microsoft Teams

Microsoft Teams, the hub for team collaboration in Microsoft 365, integrates the people, content, and tools your team needs to be more engaged and effective. sign in now.

Microsoft Teams

Microsoft Teams allows users to organize, join, and manage online meetings seamlessly with various collaboration tools.

Microsoft Teams

AADSTS50058: A silent sign-in request was sent but no user is signed in. The cookies used to represent the user's session were not sent in the request to Azure AD.

Sign in to your account

Terms of use Privacy & cookies ...

Free Online Meetings & Video Calls | Microsoft Teams

Start free Teams video calls instantly! Connect, collaborate, and communicate effortlessly. Enjoy features like video calls, chat, file sharing, and more. Perfect for personal use, freelancers, ...

Microsoft Teams help & learning

Get help with your questions about Microsoft Teams from our how-to articles, tutorials, and support content.

Oops | Microsoft Teams

Oops, app failed to load!

Sign in and get started with Teams - Microsoft Support

Learn how to log in to Microsoft Teams using our step-by-step guide. Stay connected with your team and start collaborating!

Use Microsoft Teams on the web - Microsoft Support

To use Teams on your mobile device, download the mobile app. The Microsoft Teams web app works for most desktop browsers, including Chrome, Firefox, and Internet Explorer.

🔍 | Microsoft Teams

Microsoft Teams | Microsoft 365

Explore the inspiring legacy of Ruth McGee and her husband

[Back to Home](#)