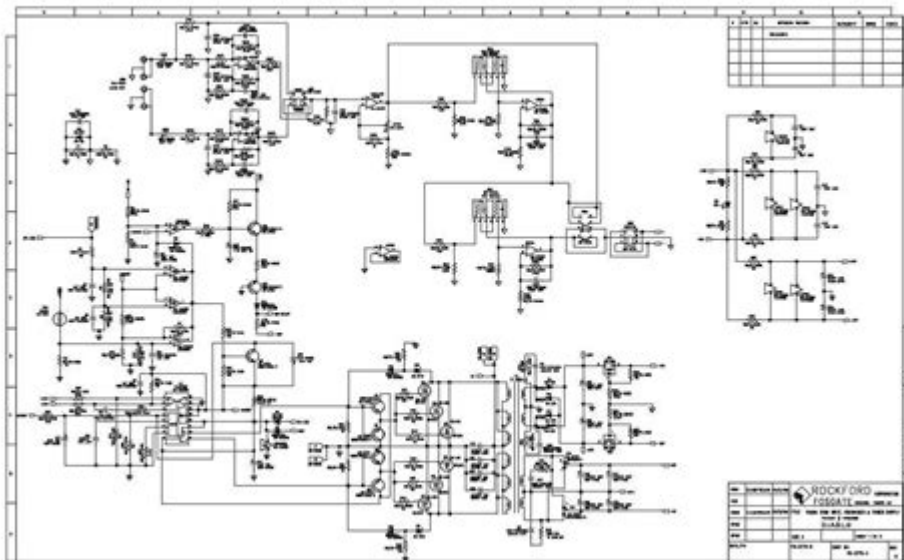


Rockford Fosgate R2 Wiring Diagram



ROCKFORD FOSGATE R2 WIRING DIAGRAM PROVIDES ESSENTIAL INFORMATION FOR ANYONE LOOKING TO INSTALL OR TROUBLESHOOT ROCKFORD FOSGATE R2 CAR AUDIO SYSTEMS. UNDERSTANDING HOW TO PROPERLY WIRE THESE AUDIO COMPONENTS CAN SIGNIFICANTLY ENHANCE THE PERFORMANCE OF YOUR SOUND SYSTEM, ENSURING CLEAN AUDIO REPRODUCTION AND PREVENTING DAMAGE TO THE EQUIPMENT. THIS ARTICLE WILL DELVE INTO THE SPECIFICS OF THE ROCKFORD FOSGATE R2 WIRING DIAGRAM, ITS APPLICATIONS, AND THE STEPS INVOLVED IN WIRING YOUR CAR AUDIO SYSTEM EFFECTIVELY.

UNDERSTANDING ROCKFORD FOSGATE R2 SERIES

ROCKFORD FOSGATE IS A WELL-RESPECTED NAME IN THE CAR AUDIO INDUSTRY, KNOWN FOR ITS HIGH-QUALITY AMPLIFIERS, SPEAKERS, AND SUBWOOFERS. THE R2 SERIES ENCOMPASSES A VARIETY OF PRODUCTS, INCLUDING SUBWOOFERS AND AMPLIFIERS THAT DELIVER POWERFUL SOUND PERFORMANCE. WHEN SETTING UP THESE COMPONENTS, UNDERSTANDING THE WIRING DIAGRAM IS CRUCIAL FOR OPTIMAL FUNCTIONALITY.

KEY COMPONENTS OF THE ROCKFORD FOSGATE R2 SERIES

BEFORE DIVING INTO THE WIRING DIAGRAM, LET'S BRIEFLY REVIEW THE KEY COMPONENTS YOU WILL ENCOUNTER IN THE ROCKFORD FOSGATE R2 SERIES:

1. **R2 SUBWOOFERS:** AVAILABLE IN DIFFERENT SIZES AND CONFIGURATIONS, THESE SUBWOOFERS ARE DESIGNED TO DELIVER DEEP BASS RESPONSE.
2. **R2 AMPLIFIERS:** THESE AMPLIFIERS PROVIDE THE NECESSARY POWER TO DRIVE THE R2 SUBWOOFERS AND SPEAKERS, ENSURING THAT EVERY NOTE IS CLEAR AND POWERFUL.
3. **WIRING KITS:** ESSENTIAL FOR CONNECTING THE AMPLIFIERS TO THE CAR'S BATTERY, SUBWOOFERS, AND SPEAKERS. THESE KITS TYPICALLY INCLUDE POWER, GROUND, AND SPEAKER WIRES, AS WELL AS FUSES AND CONNECTORS.

THE IMPORTANCE OF A WIRING DIAGRAM

A WIRING DIAGRAM SERVES AS A VISUAL GUIDE FOR CONNECTING VARIOUS AUDIO COMPONENTS IN YOUR VEHICLE. IT OUTLINES THE CORRECT CONNECTIONS AND PROVIDES INFORMATION ON WIRE COLORS, TYPES, AND CONFIGURATIONS. HERE ARE SOME KEY REASONS WHY HAVING A WIRING DIAGRAM IS ESSENTIAL:

- PREVENTS MISTAKES: WIRING DIAGRAMS HELP AVOID COMMON MISTAKES, SUCH AS INCORRECT POLARITY CONNECTIONS, WHICH CAN DAMAGE SPEAKERS OR AMPLIFIERS.
- ENHANCES PERFORMANCE: PROPER WIRING ENSURES THAT YOUR AUDIO COMPONENTS OPERATE AT PEAK PERFORMANCE, PROVIDING THE BEST POSSIBLE SOUND QUALITY.
- SIMPLIFIES TROUBLESHOOTING: IF PROBLEMS ARISE, A WIRING DIAGRAM ALLOWS YOU TO EASILY IDENTIFY AND RESOLVE ISSUES WITHIN THE SYSTEM.

ROCKFORD FOSGATE R2 WIRING DIAGRAM OVERVIEW

THE ROCKFORD FOSGATE R2 WIRING DIAGRAM TYPICALLY INCLUDES THE FOLLOWING KEY ASPECTS:

- POWER CONNECTIONS: DETAILING HOW TO CONNECT THE AMPLIFIER TO THE VEHICLE'S BATTERY AND GROUND.
- SPEAKER CONNECTIONS: INSTRUCTIONS ON HOW TO WIRE THE SUBWOOFERS AND SPEAKERS TO THE AMPLIFIER.
- SIGNAL CONNECTIONS: GUIDELINES FOR CONNECTING THE HEAD UNIT TO THE AMPLIFIER.

WIRING COMPONENTS EXPLAINED

TO EFFECTIVELY UTILIZE THE ROCKFORD FOSGATE R2 WIRING DIAGRAM, IT'S IMPORTANT TO UNDERSTAND THE VARIOUS WIRING COMPONENTS INVOLVED:

1. **POWER WIRE:** THIS IS THE WIRE THAT CONNECTS YOUR AMPLIFIER TO YOUR VEHICLE'S BATTERY. IT IS CRUCIAL FOR PROVIDING THE NECESSARY POWER FOR THE AMPLIFIER TO FUNCTION.
2. **GROUND WIRE:** A SOLID GROUND CONNECTION IS VITAL FOR THE AMPLIFIER'S PERFORMANCE. THIS WIRE CONNECTS THE AMPLIFIER TO THE CAR'S CHASSIS.
3. **SPEAKER WIRE:** THESE WIRES CONNECT THE AMPLIFIER TO THE SUBWOOFERS AND/OR SPEAKERS. CORRECTLY WIRING THESE IS ESSENTIAL FOR PROPER AUDIO OUTPUT.
4. **RCA CABLES:** THESE CABLES CARRY THE AUDIO SIGNAL FROM THE HEAD UNIT TO THE AMPLIFIER, ALLOWING FOR BETTER SOUND QUALITY.

STEP-BY-STEP WIRING INSTRUCTIONS

NOW THAT WE UNDERSTAND THE BASICS, LET'S GO THROUGH THE DETAILED STEPS TO WIRE YOUR ROCKFORD FOSGATE R2 SYSTEM:

1. GATHER YOUR MATERIALS:

- ROCKFORD FOSGATE R2 SUBWOOFERS
- ROCKFORD FOSGATE R2 AMPLIFIER
- WIRING KIT (POWER, GROUND, SPEAKER WIRES)
- RCA CABLES

- **WIRE CONNECTORS AND TOOLS** (WIRE STRIPPERS, CRIMPERS, ETC.)
2. **DISCONNECT THE BATTERY:** BEFORE STARTING ANY WIRING, ALWAYS DISCONNECT THE NEGATIVE TERMINAL OF THE CAR BATTERY TO PREVENT ANY ELECTRICAL SHORTS.
 3. **INSTALL THE AMPLIFIER:** CHOOSE A SUITABLE LOCATION FOR YOUR AMPLIFIER, ENSURING IT HAS ADEQUATE VENTILATION. MOUNT IT SECURELY.
 4. **RUN POWER WIRE:** CONNECT THE POWER WIRE FROM THE AMPLIFIER TO THE POSITIVE TERMINAL OF THE VEHICLE'S BATTERY. MAKE SURE TO USE AN INLINE FUSE NEAR THE BATTERY FOR SAFETY.
 5. **CONNECT GROUND WIRE:** CONNECT THE GROUND WIRE TO A SOLID METAL POINT ON THE CAR CHASSIS. THIS SHOULD BE AS CLOSE TO THE AMPLIFIER AS POSSIBLE.
 6. **WIRE THE SPEAKERS AND SUBWOOFERS:**
 - REFER TO THE WIRING DIAGRAM TO ENSURE CORRECT POLARITY (POSITIVE TO POSITIVE AND NEGATIVE TO NEGATIVE).
 - CONNECT THE SPEAKER WIRES FROM THE AMPLIFIER TO THE SUBWOOFERS AND/OR SPEAKERS.
 7. **CONNECT RCA CABLES:** RUN RCA CABLES FROM YOUR HEAD UNIT TO THE AMPLIFIER, ENSURING THEY DO NOT RUN PARALLEL TO THE POWER WIRE TO MINIMIZE INTERFERENCE.
 8. **RECONNECT THE BATTERY:** ONCE ALL CONNECTIONS ARE SECURE, RECONNECT THE NEGATIVE TERMINAL OF THE BATTERY.
 9. **TEST THE SYSTEM:** TURN ON YOUR CAR AUDIO SYSTEM AND CHECK EVERYTHING IS FUNCTIONING PROPERLY. ADJUST SETTINGS AS NECESSARY.

TROUBLESHOOTING COMMON ISSUES

DESPITE CAREFUL INSTALLATION, ISSUES MAY ARISE. HERE ARE SOME COMMON PROBLEMS AND TROUBLESHOOTING TIPS:

- **NO SOUND:** CHECK ALL CONNECTIONS, ENSURING THAT POWER AND GROUND WIRES ARE SECURELY CONNECTED. VERIFY THE AMPLIFIER IS POWERED ON.
- **DISTORTED SOUND:** ENSURE THAT THE GAIN SETTINGS ON THE AMPLIFIER ARE SET CORRECTLY. ALSO, CHECK FOR DAMAGED SPEAKER WIRES.
- **OVERHEATING AMPLIFIER:** ENSURE THERE IS ADEQUATE VENTILATION AROUND THE AMPLIFIER. CHECK THE WIRING TO ENSURE YOU ARE NOT DRAWING TOO MUCH POWER.

CONCLUSION

THE ROCKFORD FOSGATE R2 WIRING DIAGRAM IS AN INVALUABLE RESOURCE FOR ANYONE LOOKING TO INSTALL OR TROUBLESHOOT THEIR CAR AUDIO SYSTEM. BY FOLLOWING THE STEPS OUTLINED IN THIS ARTICLE, YOU CAN ENSURE PROPER INSTALLATION, ENHANCE SOUND QUALITY, AND PROLONG THE LIFE OF YOUR AUDIO COMPONENTS. UNDERSTANDING THE WIRING PROCESS NOT ONLY EMPOWERS YOU TO SET UP YOUR SYSTEM EFFECTIVELY BUT ALSO EQUIPS YOU WITH THE KNOWLEDGE TO ADDRESS ANY POTENTIAL ISSUES THAT MAY ARISE IN THE FUTURE. WITH THE RIGHT TOOLS AND A CLEAR WIRING DIAGRAM, YOU CAN ENJOY THE POWERFUL SOUND PERFORMANCE THAT ROCKFORD FOSGATE R2 PRODUCTS ARE KNOWN FOR.

FREQUENTLY ASKED QUESTIONS

WHAT IS THE PURPOSE OF THE ROCKFORD FOSGATE R2 WIRING DIAGRAM?

THE ROCKFORD FOSGATE R2 WIRING DIAGRAM PROVIDES A VISUAL GUIDE FOR CORRECTLY WIRING THE R2 SERIES SUBWOOFERS AND AMPLIFIERS TO ENSURE OPTIMAL PERFORMANCE AND AVOID DAMAGING THE EQUIPMENT.

WHERE CAN I FIND THE ROCKFORD FOSGATE R2 WIRING DIAGRAM?

THE WIRING DIAGRAM FOR ROCKFORD FOSGATE R2 PRODUCTS CAN BE FOUND IN THE PRODUCT MANUAL THAT COMES WITH THE DEVICE, ON THE ROCKFORD FOSGATE OFFICIAL WEBSITE, OR IN VARIOUS ONLINE CAR AUDIO FORUMS.

WHAT ARE THE KEY COMPONENTS SHOWN IN THE ROCKFORD FOSGATE R2 WIRING DIAGRAM?

KEY COMPONENTS TYPICALLY INCLUDE THE SUBWOOFER, AMPLIFIER, POWER WIRE, GROUND WIRE, SPEAKER WIRE, AND ANY NECESSARY FUSES OR CONNECTORS.

CAN I USE THE ROCKFORD FOSGATE R2 WIRING DIAGRAM FOR DIFFERENT MODELS?

WHILE THE BASIC PRINCIPLES OF WIRING REMAIN SIMILAR, IT'S BEST TO REFER TO THE SPECIFIC WIRING DIAGRAM FOR YOUR MODEL TO ENSURE COMPATIBILITY AND AVOID WIRING MISTAKES.

WHAT COMMON MISTAKES SHOULD I AVOID WHEN FOLLOWING THE ROCKFORD FOSGATE R2 WIRING DIAGRAM?

COMMON MISTAKES INCLUDE REVERSING POSITIVE AND NEGATIVE WIRES, NOT SECURING CONNECTIONS PROPERLY, USING THE WRONG GAUGE WIRE, AND NEGLECTING TO USE A FUSE FOR PROTECTION.

HOW DO I INTERPRET THE COLOR CODES IN THE ROCKFORD FOSGATE R2 WIRING DIAGRAM?

COLOR CODES IN THE DIAGRAM TYPICALLY REPRESENT DIFFERENT FUNCTIONS: FOR EXAMPLE, RED USUALLY INDICATES POSITIVE POWER, BLACK IS FOR GROUND, AND VARIOUS OTHER COLORS DENOTE SPEAKER OUTPUTS.

IS THERE A DIFFERENCE BETWEEN WIRING A SINGLE R2 SUBWOOFER VERSUS MULTIPLE R2 SUBWOOFERS?

YES, WIRING MULTIPLE R2 SUBWOOFERS REQUIRES ADDITIONAL CONSIDERATIONS FOR IMPEDANCE AND POWER HANDLING, AND THE WIRING DIAGRAM WILL SHOW DIFFERENT CONFIGURATIONS SUCH AS SERIES OR PARALLEL WIRING.

WHAT TOOLS DO I NEED TO FOLLOW THE ROCKFORD FOSGATE R2 WIRING DIAGRAM?

ESSENTIAL TOOLS INCLUDE WIRE STRIPPERS, CRIMPING TOOLS, A MULTIMETER FOR TESTING CONNECTIONS, AND VARIOUS CONNECTORS OR SOLDERING EQUIPMENT TO ENSURE SECURE WIRING.

Find other PDF article:

<https://soc.up.edu.ph/60-flick/Book?ID=ttK20-2794&title=the-last-of-us-art.pdf>

[Rockford Fosgate R2 Wiring Diagram](#)

Rockford Fosgate ® | Premium Audio Systems & Accessories

Rockford Fosgate makes lifestyle products that deliver THE audio experience in cars, boats and recreational vehicles. ...

Woofer BoxWizard | Rockford Fosgate

Woofer Wiring WizardWoofer BoxWizard Calculate internal air space available for your woofers. Select an enclosure type, choose a unit of measure and wood ...

Harley Davidson Audio System | Rockford Fosgate

Meet the new audio solution from Harley-Davidson® and Rockford Fosgate®. With extremely simple installation, Bluetooth™ amplifier connectivity, and epic output, ...

Car Audio, Stereo, Speakers, Subwoofers, and Amps | Rockfo...

Rockford Fosgate offers a wide range of car audio products, including car amplifiers, speakers, subwoofers, and complete sound systems. Each product ...

UTV and ATV Audio, Stereo, Speakers, Subwoofers, and Am...

Whether you're tearing up the trails in your side-by-side or cruising the dunes in your UTV, Rockford Fosgate has the perfect audio solution for your needs. ...

Rockford Fosgate ® | Premium Audio Systems & Accessories

Rockford Fosgate makes lifestyle products that deliver THE audio experience in cars, boats and recreational vehicles. Performance is in our DNA, from purpose-built amps precisely tuned to ...

Woofer BoxWizard | Rockford Fosgate

Woofer Wiring WizardWoofer BoxWizard Calculate internal air space available for your woofers. Select an enclosure type, choose a unit of measure and wood thickness, then input your ...

Harley Davidson Audio System | Rockford Fosgate

Meet the new audio solution from Harley-Davidson® and Rockford Fosgate®. With extremely simple installation, Bluetooth™ amplifier connectivity, and epic output, this all-in-one audio ...

Car Audio, Stereo, Speakers, Subwoofers, and Amps | Rockford ...

Rockford Fosgate offers a wide range of car audio products, including car amplifiers, speakers, subwoofers, and complete sound systems. Each product is designed with precision and ...

UTV and ATV Audio, Stereo, Speakers, Subwoofers, and Amps

Whether you're tearing up the trails in your side-by-side or cruising the dunes in your UTV, Rockford Fosgate has the perfect audio solution for your needs. Our selection includes ...

DSR1 - Rockford Fosgate

Whether you're an audio novice or a Rockford Fanatic, the DSR1 gives you better control over your mobile audio system beyond bass and treble adjustments. The DSR1 makes expanding ...

Car Subwoofers - Rockford Fosgate

Rockford Fosgate offers a variety of car subwoofers, including shallow-mount and traditional sized subwoofers designed for vented and sealed enclosures. They also come in different sizes, ...

About - Rockford Fosgate

Rockford Corporation is formed and commissions headquarters at 613 S. Rockford Drive, Tempe, AZ. Rockford Corporation adopts the street name - combines it with Jim's last name - to create ...

Woofer Wiring Wizard | Rockford Fosgate

Woofer Wiring WizardWoofer Wiring Wizard Determine what amplifier to use with your subwoofer system. Select your Woofer Quantity and Woofer Impedance to see available wiring ...

Owners Manual Downloads - Rockford Fosgate

Rockford Fosgate products come with a one-year warranty for mobile speakers, mobile signal processors, and mobile subwoofers. Mobile Audio POWER series amplifiers have a two-year ...

Discover the ultimate Rockford Fosgate R2 wiring diagram for optimal sound system setup. Learn how to maximize your audio experience today!

[Back to Home](#)