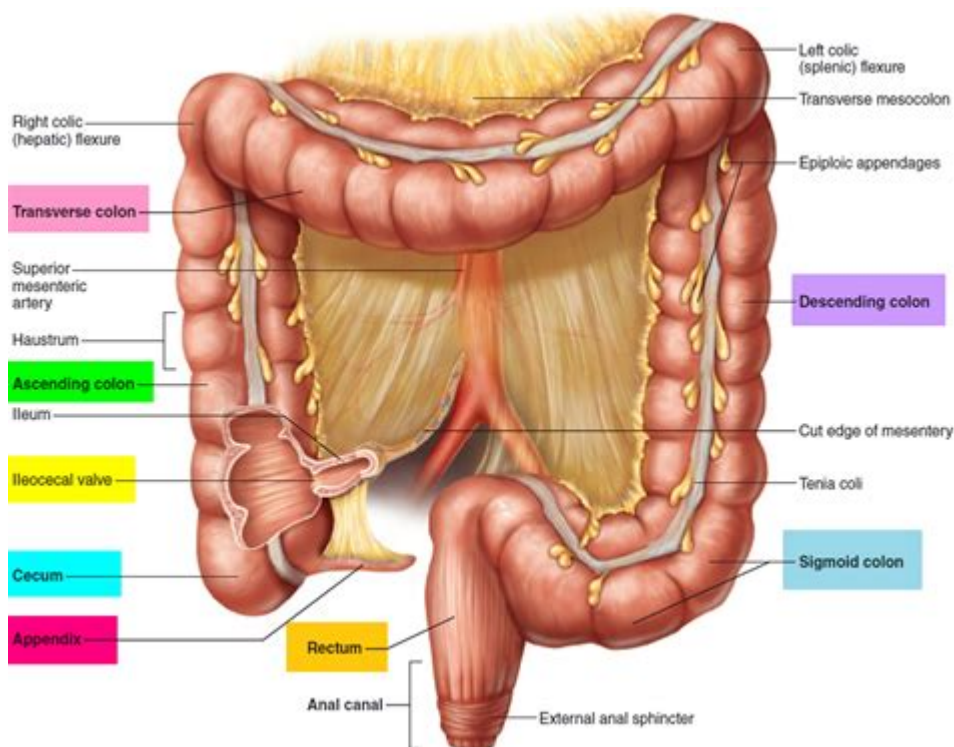


Role Of The Large Intestine



The role of the large intestine in the human digestive system is crucial for maintaining overall health. Often overshadowed by the small intestine, the large intestine, or colon, plays an essential part in the final stages of digestion, nutrient absorption, and waste elimination. Understanding how this vital organ functions can provide insights into digestive health and the importance of maintaining a balanced diet.

Overview of the Large Intestine

The large intestine is a significant part of the gastrointestinal tract, measuring approximately 1.5 meters (5 feet) in length. It is wider than the small intestine, with a diameter of about 6.5 centimeters (2.5 inches). The large intestine consists of four main sections:

1. Cecum
2. Colon
 - Ascending colon
 - Transverse colon
 - Descending colon
 - Sigmoid colon
3. Rectum
4. Anus

This organ is responsible for various functions that contribute to the body's overall well-being.

Functions of the Large Intestine

The primary functions of the large intestine can be categorized into several key areas:

1. Absorption of Water and Electrolytes

One of the main functions of the large intestine is to absorb water and electrolytes from the undigested food material that arrives from the small intestine. This process is crucial for maintaining the body's fluid balance. Key points include:

- Water Absorption: The large intestine absorbs about 1-2 liters of water daily, which helps to form solid waste (feces).
- Electrolyte Absorption: Important electrolytes, such as sodium and potassium, are absorbed in the colon, which aids in maintaining electrolyte balance in the body.

2. Fermentation of Unabsorbed Material

The large intestine is home to trillions of bacteria that play a critical role in the fermentation process. This microbial population is vital for several reasons:

- Breakdown of Fiber: Bacteria in the colon break down dietary fiber that the human digestive system cannot process. This process produces short-chain fatty acids, which can serve as an energy source for colon cells.
- Production of Gases: During fermentation, gases such as carbon dioxide, methane, and hydrogen are produced. While these gases can cause discomfort, they are a natural byproduct of digestion.

3. Formation and Elimination of Feces

The large intestine plays a direct role in the formation and eventual elimination of feces. This process involves:

- Compaction: As water is absorbed, the remaining material becomes more solid, forming feces.
- Storage: The rectum acts as a storage site for fecal matter until elimination is convenient.
- Defecation: The process of eliminating waste from the body is controlled by the anal sphincters. Regular bowel movements are essential for health and well-being.

4. Synthesis of Certain Vitamins

The gut microbiota within the large intestine also contributes to the synthesis of certain vitamins. Key vitamins produced include:

- Vitamin K: Essential for blood clotting and bone health.

- B Vitamins: Such as biotin and folate, which play a role in various metabolic processes.

Maintaining a Healthy Large Intestine

A healthy large intestine is vital for overall health. Here are several strategies to promote a healthy colon:

1. Balanced Diet

- High-Fiber Foods: Incorporate fruits, vegetables, whole grains, and legumes into your diet. Fiber aids in digestion and helps prevent constipation.
- Probiotics: Foods rich in probiotics, such as yogurt and fermented products, can support a healthy gut microbiome.
- Hydration: Drinking enough water is essential for maintaining the moisture needed for proper digestion and fecal elimination.

2. Regular Physical Activity

- Exercise: Engaging in regular physical activity can stimulate intestinal function and promote regular bowel movements. Aim for at least 150 minutes of moderate aerobic exercise each week.

3. Avoiding Excessive Processed Foods

- Limit Sugary and Fatty Foods: Highly processed foods can contribute to digestive issues, including constipation and bloating. Opt for whole, unprocessed foods whenever possible.

4. Regular Health Check-Ups

- Screenings: Regular health check-ups, including screenings for colorectal cancer, can help identify issues early. Begin screening at age 45 or earlier if there's a family history of colon-related diseases.

Common Disorders of the Large Intestine

Several disorders can affect the large intestine, impacting its function and overall health. Some common conditions include:

1. Irritable Bowel Syndrome (IBS)

IBS is a common disorder that affects the large intestine, leading to symptoms such as:

- Abdominal pain
- Bloating
- Gas
- Diarrhea and/or constipation

Managing IBS often involves dietary changes, stress management, and sometimes medication.

2. Inflammatory Bowel Disease (IBD)

IBD encompasses conditions such as Crohn's disease and ulcerative colitis. Symptoms can include:

- Severe abdominal pain
- Chronic diarrhea
- Weight loss
- Fatigue

Treatment typically involves medication to reduce inflammation and manage symptoms.

3. Diverticulitis

Diverticulitis occurs when small pouches (diverticula) in the colon become inflamed or infected. Symptoms may include:

- Abdominal pain (often on the left side)
- Fever
- Changes in bowel habits

Treatment may involve dietary changes, antibiotics, or, in severe cases, surgery.

4. Colorectal Cancer

Colorectal cancer is a significant health concern and can develop from polyps in the large intestine. Key points include:

- Symptoms: Changes in bowel habits, blood in stool, unexplained weight loss, and persistent abdominal discomfort.
- Prevention: Regular screenings and a healthy lifestyle can reduce the risk of developing colorectal cancer.

Conclusion

In conclusion, the role of the large intestine extends far beyond merely eliminating waste. It is a vital organ that contributes to hydration, nutrient absorption, vitamin synthesis, and the maintenance of gut health. Understanding the importance of the large intestine and how to keep it healthy can lead to improved overall health and well-being. By adopting a balanced diet, staying active, and attending regular health check-ups, individuals can support the effective functioning of this essential organ and promote a healthier lifestyle.

Frequently Asked Questions

What is the primary function of the large intestine in the digestive system?

The primary function of the large intestine is to absorb water and electrolytes from indigestible food matter, and to compact and store waste material before it is excreted.

How does the large intestine contribute to gut health?

The large intestine plays a crucial role in gut health by housing beneficial bacteria that help ferment undigested carbohydrates, producing short-chain fatty acids that are beneficial for colon health.

What role does the large intestine play in the immune system?

The large intestine contributes to the immune system by containing a significant portion of the body's gut-associated lymphoid tissue (GALT), which helps to protect against pathogens and maintain gut flora balance.

What are common disorders associated with the large intestine?

Common disorders associated with the large intestine include irritable bowel syndrome (IBS), inflammatory bowel disease (IBD), colorectal cancer, and diverticulitis.

How does diet influence the function of the large intestine?

Diet influences the function of the large intestine by affecting the diversity and health of gut bacteria; a high-fiber diet promotes healthy digestion and regular bowel movements, while a low-fiber diet can lead to constipation and other issues.

What is the significance of the large intestine in water regulation?

The large intestine is significant in water regulation as it absorbs most of the water from indigestible food, which helps maintain hydration levels in the body and prevents dehydration.

Find other PDF article:

<https://soc.up.edu.ph/15-clip/files?trackid=dYB70-5844&title=costco-lemon-herb-chicken-thigh-cooking-instructions.pdf>

Role Of The Large Intestine

Ain Khaled - Wikipedia

Ain Khaled (Arabic: عین خالد, romanized: 'Ayn Khālīd) is a Qatari district in the municipality of Al Rayyan. [3] Located on the outskirts of the capital Doha, the area is historically known for its well which served the people of Doha and neighboring villages.

Ain Khaled Map - Suburb - Al Rayyan, Qatar - Mapcarta

Ain Khaled is a suburb in Al Rayyan, Qatar. Ain Khaled is situated nearby to the suburb Al Ain Gardens, as well as near Al Aziziya. Highlights include Aspire Tower and Hamad Aquatic Centre. Photo: Jaseem Hamza, CC BY 3.0.

What makes Ain Khaled Doha an important residential area?

Apr 13, 2025 · Nestled in the vibrant city of Doha, Ain Khaled stands out as one of the capital's most dynamic and culturally rich neighborhoods. Known for its strategic location, diverse community, and growing infrastructure, Ain Khaled blends Qatar's deep-rooted heritage with the pulse of modern urban living.

Ain Khaled City Guide - Saakin.qa

Explore the hidden gems and bustling streets of Ain Khaled with our comprehensive city guide. Uncover the best local eateries, vibrant markets, and leisure spots that make this neighborhood a haven for residents and visitors alike.

What to check out at Ain Khaled Family Park - ILoveQatar.net

Dec 7, 2021 · Scroll down for the things you can see and enjoy for free when you visit this clean and peaceful park in the Al Rayyan Municipality! Note: Here are the updates on the gradual lifting of COVID-19 restrictions effective 3 October.

Ain Khaled Doha Community Insights - Property Finder

Ain Khaled is one of the first residential areas in Qatar. It's located in Al Rayyan municipality, close to the bustling Salwa Road. This area has become a favourite for those seeking affordable housing, offering a range of villas and apartments at competitive prices.

Ain Khaled (Al Rayyan) Street Guide and Map - Openalfa

Street directory and street map of Ain Khaled. Directory of services in Ain Khaled: shops, restaurants, leisure and sports facilities, hospitals, gas stations and other places of interest.

Ain Khalid Family Park: Qatar Tranquil Retreat for Families

Jul 7, 2023 · Ain Khalid Family Park, a peaceful neighborhood oasis, offers families the opportunity to relax, play, read, and enjoy the beauty of nature.

`Ayn Khalid Map | Qatar Google Satellite Maps - maplandia.com

See `Ayn Khalid photos and images from satellite below, explore the aerial photographs of `Ayn

