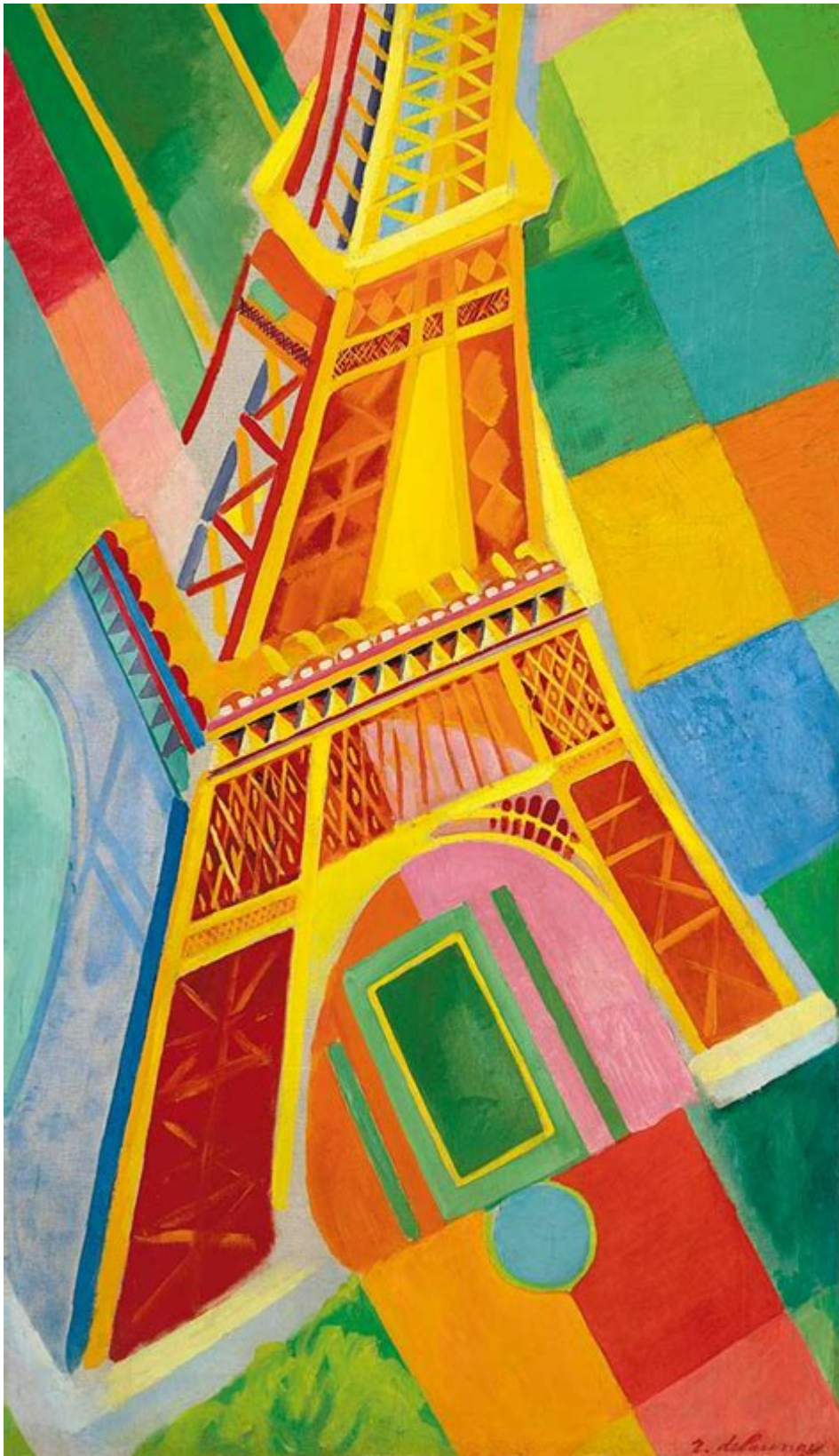


# Robert Delaunay Eiffel Tower Series



**Robert Delaunay Eiffel Tower Series** is a captivating exploration of modernity, light, and color, as interpreted by the renowned French painter Robert Delaunay. Delaunay, a pivotal figure in the early 20th-century art

movement known as Orphism, created a series of works that focused on the Eiffel Tower, a symbol of Paris and modern engineering. His paintings reflect not only his fascination with the iconic structure but also his innovative approach to color and abstraction. This article delves into the context, themes, and significance of Delaunay's Eiffel Tower series, illustrating how it encapsulates the spirit of an era.

## Historical Context

### The Eiffel Tower: A Symbol of Modernity

The Eiffel Tower was completed in 1889 as the centerpiece for the Exposition Universelle, a world's fair held to celebrate the 100th anniversary of the French Revolution. Designed by engineer Gustave Eiffel, the tower stood as a testament to human ingenuity and the advancements of the Industrial Age. At 300 meters tall, it was the tallest man-made structure in the world at the time. The Eiffel Tower quickly became a symbol of Paris and modernity, capturing the imagination of artists, writers, and intellectuals, including Robert Delaunay.

### Robert Delaunay and the Orphism Movement

Born in 1885, Robert Delaunay was a key figure in the development of the Orphism movement, characterized by its emphasis on color and light. Orphism sought to evoke emotional responses through dynamic compositions and vibrant colors, often using circular forms and overlapping shapes. Delaunay's works were influenced by his interest in the effects of light and movement, which he believed could express the rhythm of modern life. The Eiffel Tower series emerged during a period of artistic experimentation, reflecting his desire to capture the essence of Paris and the rapid changes occurring in society.

### The Eiffel Tower Series

Delaunay created multiple works featuring the Eiffel Tower, with each piece showcasing his unique approach to color and abstraction. The series includes paintings, drawings, and prints, each presenting the tower in various contexts and moods.

### Notable Works in the Series

Some of the most significant pieces in Delaunay's Eiffel Tower series

include:

1. The Eiffel Tower (1909) - This painting features the Eiffel Tower enveloped in a vibrant explosion of color, showcasing Delaunay's characteristic use of circular forms. The tower appears to pulsate with energy, reflecting the dynamic spirit of the city.
2. Eiffel Tower in the Rain (1911) - In this work, Delaunay captures the atmospheric effects of rain on the tower, using a cooler palette to contrast the warm colors of his earlier works. The piece evokes a sense of movement and change, reminiscent of the shifting weather patterns in Paris.
3. The City of Paris (1910) - This painting features the Eiffel Tower as a central element within a broader composition of the Paris skyline. Delaunay employs overlapping shapes and colors to create a sense of depth and dynamic interaction between the various architectural forms.

## Themes and Techniques

Delaunay's Eiffel Tower series explores several key themes and employs innovative techniques that define his artistic style.

## Modernity and Urban Life

The Eiffel Tower represents not only the architectural achievement of the era but also the changing landscape of urban life. Delaunay's works reflect the excitement and chaos of modernity, capturing the vibrancy of the city. Through his use of color and form, he conveys the energy of Paris, where technological advancements and artistic movements coexisted.

## Color and Light

One of the defining features of Delaunay's work is his revolutionary approach to color. Influenced by the theories of color developed by artists like Henri Matisse and the Impressionists, Delaunay used color to create visual rhythms and harmonies. His technique involved layering colors and employing contrasting hues to evoke depth and luminosity.

- Color Theory: Delaunay believed that color could evoke emotion and convey movement. He often used complementary colors to enhance the vibrancy of his compositions.
- Light and Atmosphere: By capturing the effects of light on the Eiffel Tower, Delaunay created a sense of immediacy and presence in his work, allowing viewers to experience the atmosphere of Paris.

# Abstraction and Rhythm

Delaunay's style evolved towards abstraction as he sought to break away from traditional representation. The Eiffel Tower series exemplifies this shift, as he utilized geometric shapes and dynamic lines to suggest movement and rhythm.

- Circular Forms: The use of circles and spirals in his work symbolizes the cyclical nature of life and the energy of the city.
- Rhythmic Composition: Delaunay's paintings often feature a sense of musicality, with shapes and colors interacting in a way that mimics the rhythms of urban life.

# Influence and Legacy

Robert Delaunay's Eiffel Tower series significantly influenced the trajectory of modern art and remains an essential part of his legacy.

# Impact on Future Artists

Delaunay's innovative use of color and abstraction paved the way for future movements, including Abstract Expressionism and Color Field painting. Artists such as Wassily Kandinsky and Piet Mondrian were inspired by Delaunay's focus on the emotional power of color and form.

# Continued Relevance

The Eiffel Tower remains a potent symbol of Paris and modernity, and Delaunay's interpretations continue to resonate with contemporary audiences. His work invites viewers to reconsider the relationship between art, architecture, and urban life, highlighting the ongoing dialogue between the two.

# Conclusion

Robert Delaunay's Eiffel Tower series encapsulates the excitement and dynamism of early 20th-century Paris, reflecting the artist's fascination with modernity, light, and color. Through his innovative techniques and exploration of abstraction, Delaunay transformed the iconic structure into a vibrant symbol of the era. His work not only contributed to the development of the Orphism movement but also left a lasting impact on the trajectory of modern art. Today, the Eiffel Tower series stands as a testament to the

enduring power of art to capture the spirit of a city and its people, inviting us to experience the beauty and complexity of modern life.

## **Frequently Asked Questions**

### **Who is Robert Delaunay and what is his significance in art?**

Robert Delaunay was a French artist known for his contributions to the Orphism movement, which emphasized the use of color and light. He is particularly famous for his series of works featuring the Eiffel Tower, which explore the relationship between urban life and modernity.

### **What inspired Robert Delaunay to create his Eiffel Tower series?**

Delaunay was inspired by the dynamic nature of Paris and its modern architecture, particularly the Eiffel Tower. He sought to capture the energy and movement of the city through vibrant colors and abstract forms in his paintings.

### **How does Delaunay's Eiffel Tower series reflect the principles of Orphism?**

Delaunay's Eiffel Tower series embodies Orphism through its focus on color and light. The paintings utilize circular forms and overlapping colors to evoke the sensation of movement and the emotional experience of viewing the iconic structure.

### **What techniques did Delaunay use in his Eiffel Tower paintings?**

Delaunay employed techniques such as vibrant color juxtaposition, circular forms, and dynamic compositions to convey the experience of modernity and the visual rhythm of the Eiffel Tower within the urban landscape.

### **In which museums can Robert Delaunay's Eiffel Tower series be found?**

Works from Robert Delaunay's Eiffel Tower series are held in several prestigious museums, including the Musée d'Orsay in Paris and the Museum of Modern Art in New York, among others.

### **What is the significance of the Eiffel Tower in**

## DeLaunay's works?

The Eiffel Tower serves as a symbol of modernity and progress in Delaunay's works. It represents the intersection of art, technology, and urban life, reflecting the transformative spirit of early 20th-century Paris.

Find other PDF article:

<https://soc.up.edu.ph/09-draft/files?docid=XOS34-5825&title=benefits-of-a-cashless-society.pdf>

## Robert Delaunay Eiffel Tower Series

First name ,middle name ,last name ...

Aug 19, 2008 · □□□□□□First name ,middle name ,last name □□□□□□□□□□□□1□first name□□□□□□ ...

## List of recruiting companies to stay away from? - Reddit

Just from reading posts and comments here, it's seems people need to stay away from Teksystems and Robert Half. Any ...

*Possible fix for the Install Error in the launcher : r/starcitizen*

trueThis is the subreddit for everything related to Star Citizen - an up and coming epic space sim MMO being developed ...

## What we know of Robert and the Armored Warrior - Reddit

Robert and dad are likely European, either Dutch or Portuguese. South Seas doesn't necessitate beyond Japan, it means ...

Robert L. Strayer : r/BandofBrothers - Reddit

Robert L. Strayer Robert Lytle Strayer was born on March 2,1910 in Ruthledge,PA.Strayer even as a ...

First name ,middle name ,last name ...

Aug 19, 2008 · First name ,middle name ,last name 1first name  
Lily White Lilyfirst name,

## List of recruiting companies to stay away from? - Reddit

Just from reading posts and comments here, it's seems people need to stay away from Teksystems and Robert Half. Any other ones to add to this list?

## Possible fix for the Install Error in the launcher : r/starcitizen - Reddit

trueThis is the subreddit for everything related to Star Citizen - an up and coming epic space sim MMO being developed by Chris Roberts and Cloud Imperium Games.

### What we know of Robert and the Armored Warrior - Reddit

Robert and dad are likely European, either Dutch or Portuguese. South Seas doesn't necessitate beyond Japan, it means southern seas of Japan. Japan first encountered the Europeans south of the country, in/around Tanegashima (also what the gun was named after), and trade with Europeans

mostly happened through Hirado, also located south of Japan.

### **Robert L. Strayer : r/BandofBrothers - Reddit**

Robert L. Strayer Robert Lytle Strayer was born on March 2,1910 in Ruthledge,PA.Strayer even as a kid,dreamed of becoming a soldier.He joined the Army in 1930. He was one of the original officers in Camp Toccoa. As a Major, in 1942 he was given command of the 2nd Battalion of the 506th Parachute Infantry Regiment, 101st Airborne Division.

### **Has anyone done research on Robert? : r/60daysin - Reddit**

I personally believe that Robert is a psychopath. Robert never showed any true feelings throughout the show. Although we do see him laughing and smiling a lot throughout the show it is mainly in moments where he is laughing at something he has ...

first name last name?\_

first name last name?last name family name first name given name Michael Jordan. Michael (first name) Jordan (last name)1+

### **Si Robert Baratheon fics : r/TheCitadel - Reddit**

Aug 6, 2022 · It appears you are asking for a popular type of fic! Have you looked through our Maesterlist of SI & ISOT recs? It might just have what you are looking for! I am a bot, and this action was performed automatically. Please contact the moderators of this subreddit if you have any questions or concerns.

### **What is the Russian name for Robert? : r/AskARussian - Reddit**

The name Robert is used as is. For example, there is the famous Russian poet Robert Rozhdestvensky. More often this name is found among the Tatars, along with the names Arthur, Rudolf, etc. Reply reply Italy-Memes •

does lookin at Robert the doll through a video curse you? : r

They show Robert the doll in a tourism commercial for Key West so unless the Key West chamber of commerce is setting out to curse the general population of the US you will probably be fine.

Explore Robert Delaunay's iconic Eiffel Tower series

[Back to Home](#)