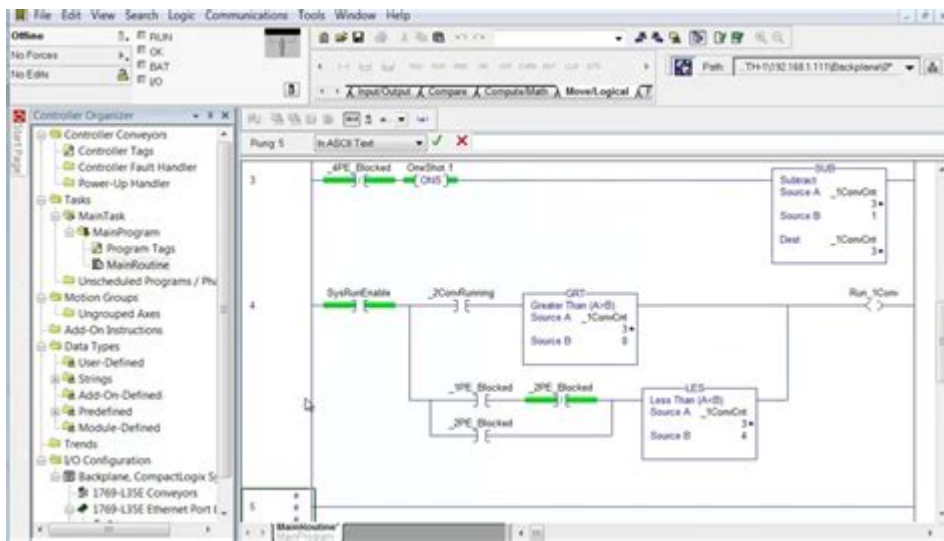


Rslogix 5000 Advanced Instruction Manual



RSLogix 5000 Advanced Instruction Manual is an essential resource for automation professionals working with Rockwell Automation's ControlLogix and CompactLogix programmable automation controllers (PACs). This manual provides in-depth guidance on utilizing advanced instructions within the RSLogix 5000 programming environment, enabling users to optimize their control strategies and enhance system performance. In this article, we will delve into the key features of the RSLogix 5000 Advanced Instruction Manual, explore its various sections, and provide tips on how to leverage its content effectively.

Understanding RSLogix 5000

RSLogix 5000 is a powerful programming software that allows users to develop, debug, and maintain automation applications. It is designed for use with Rockwell Automation's Logix platform, which integrates multiple control technologies under a unified programming environment. Among its many capabilities, the RSLogix 5000 software supports structured programming, allowing for the development of complex control systems.

Key Features of RSLogix 5000

- **Modular Programming:** RSLogix 5000 supports modular programming, enabling users to create reusable code blocks and functions, thereby improving maintainability and reducing development time.
- **Integrated Development Environment (IDE):** The software provides an intuitive IDE that includes drag-and-drop functionality, syntax highlighting, and real-time monitoring, making it easier for users to write and test code.

- Comprehensive Instruction Set: RSLogix 5000 includes a wide range of standard and advanced instructions, allowing for complex logic and control algorithms to be implemented.

Why the Advanced Instruction Manual is Important

The **RSLogix 5000 Advanced Instruction Manual** serves as a definitive guide for users looking to harness the full potential of the software's advanced features. It offers detailed explanations, examples, and application scenarios for each advanced instruction, making it an invaluable tool for both novice and experienced programmers.

Structure of the Manual

The manual is organized into several sections, each focusing on specific advanced instructions and concepts. Here's a typical structure of the manual:

1. Introduction
 - Overview of advanced instructions
 - Benefits of using advanced instructions
2. Advanced Instructions Overview
 - Explanation of different categories of advanced instructions
 - Use cases and applications
3. Detailed Instruction Descriptions
 - Each advanced instruction is documented with:
 - Syntax
 - Parameters
 - Examples of usage
 - Common pitfalls and troubleshooting tips
4. Programming Techniques
 - Best practices for implementing advanced instructions
 - Tips for optimizing performance
5. Appendices
 - Additional resources
 - Glossary of terms
 - Index for quick reference

Key Advanced Instructions Covered

The RSLogix 5000 Advanced Instruction Manual covers numerous advanced instructions,

each with unique functionalities. Here are some of the most important ones:

1. Function Block Diagram (FBD)

Function Block Diagrams allow users to visualize complex control processes through a graphical representation. This section of the manual explains how to create and utilize FBDs effectively.

2. Add-On Instructions (AOIs)

Add-On Instructions enable the encapsulation of reusable code. The manual details how to create, configure, and use AOIs, which can significantly streamline programming efforts.

3. User-Defined Data Types (UDTs)

UDTs allow users to create custom data structures that can simplify code and enhance readability. The manual provides guidelines on defining and implementing UDTs.

4. Sequential Function Charts (SFC)

SFCs are used for implementing sequential control systems. The manual discusses how to effectively design and program SFCs to manage complex sequences of operation.

5. Motion Control Instructions

This section covers advanced motion control instructions, which are vital for applications requiring precise control of actuators and motors. The manual offers insights into using these instructions for optimal performance.

Best Practices for Using the Manual

To maximize the benefits of the **RSLogix 5000 Advanced Instruction Manual**, consider the following best practices:

1. Familiarize Yourself with the Basics

Before diving into advanced instructions, ensure you have a solid understanding of the

basic programming concepts and standard instructions in RSLogix 5000.

2. Follow Examples Closely

The manual is filled with practical examples. Take the time to follow these examples step-by-step to understand how each advanced instruction operates within different contexts.

3. Experiment with Sample Projects

Create sample projects where you can test out various advanced instructions discussed in the manual. This hands-on approach will help reinforce your understanding and improve your programming skills.

4. Utilize the Troubleshooting Tips

Each advanced instruction section includes common pitfalls and troubleshooting tips. Refer to these sections when you encounter issues during programming to save time and frustration.

5. Regularly Update Your Knowledge

As Rockwell Automation frequently updates its software, it's crucial to keep your knowledge current. Regularly check for updates to the manual and stay informed about new features and instructions.

Conclusion

The **RSLogix 5000 Advanced Instruction Manual** is an indispensable resource for anyone involved in automation programming with Rockwell's Logix platforms. By understanding and effectively using the advanced instructions detailed in the manual, users can significantly enhance their control systems and optimize their programming strategies. Whether you're a seasoned professional or a newcomer to the field, leveraging the insights and techniques found in this manual can elevate your projects and improve your overall proficiency in RSLogix 5000.

By following the best practices outlined above and continuously exploring the features of RSLogix 5000, you can unlock the full potential of your automation solutions and drive efficiency in your operations.

Frequently Asked Questions

What is RSLogix 5000 and what are its primary uses?

RSLogix 5000 is a programming software used for Allen-Bradley ControlLogix and CompactLogix programmable logic controllers (PLCs). It is primarily used for developing control logic, monitoring, and troubleshooting industrial automation applications.

Where can I find the advanced instruction manual for RSLogix 5000?

The advanced instruction manual for RSLogix 5000 can be found on the Rockwell Automation website, specifically in the documentation section for ControlLogix products, or it may be included in the software installation package.

What advanced instructions are covered in the RSLogix 5000 manual?

The RSLogix 5000 advanced instruction manual covers various advanced programming instructions such as PID control, motion control, and data manipulation functions, along with detailed examples and use cases.

How can I troubleshoot errors using the RSLogix 5000 advanced instruction manual?

To troubleshoot errors using the manual, refer to the error codes and troubleshooting sections that provide step-by-step guidance on diagnosing and resolving common issues associated with advanced instructions.

Is there a difference between RSLogix 5000 and Studio 5000?

Yes, RSLogix 5000 is the earlier version of the software, while Studio 5000 is the current integrated environment that combines RSLogix 5000 and additional functionalities for system design and architecture, offering enhanced features and user interface.

Find other PDF article:

<https://soc.up.edu.ph/06-link/files?trackid=clk30-5765&title=ap-biology-score-distribution.pdf>

[Rslogix 5000 Advanced Instruction Manual](#)

New York Yankees: Breaking News, Rumors & Highlights | Yardbarker

1 day ago · New York Yankees rumors, news and videos from the best sources on the web. Sign up

for the Yankees newsletter!

Latest Yankees News | New York Yankees - MLB.com

2 days ago · The official Yankees news source including trades, rumors, scores, standings, stats, game recaps, highlights, injuries and more from MLB.

Yankees trade rumors tracker: Latest updates on Mitch ... - Sporting News

1 day ago · Yankees trade rumors tracker: Latest updates on Mitch Keller, MacKenzie Gore ahead of MLB deadline Daniel Chavkin 1 minute ago 11:10 am PDT

New York Yankees News, Scores, Stats & Standings | New York ...

Get the latest New York Yankees news, scores, standings, stats, trade rumors, expert analysis and more from the New York Post.

New York Yankees | New York Yankees News, Scores, ...

Be the best New York Yankees fan you can be with Bleacher Report. Keep up with the latest storylines, expert analysis, highlights, scores and more.

New York Yankees News & New York Yankees Rumors

Latest news on the New York Yankees, a professional baseball team based in the Bronx, New York City, playing in the AL East division of the MLB

New York Yankees news, updates, and analysis - Yanks Go Yard

3 days ago · The latest New York Yankees news, updates, stats, rumors, analysis, opinion, editorials, and commentary from Yanks Go Yard

New York Yankees: Latest MLB News, Scores & Updates | amNY

3 days ago · Get complete New York Yankees coverage with breaking news, scores, trade rumors, injury updates, and game analysis. Plus Yankees schedule and ticket info.

New York Yankees: Yankees News, Rumors, Reports, Updates, ...

1 day ago · For daily coverage including breaking news, injury reports, and updates for the New York Yankees, visit Empire Sports Media!

New York Yankees Latest News, Rumors, And Updates

Pinstripes Nation is your go-to source for all New York Yankees News, Stories, Videos, Schedule, Stats, & Rumors. Stay up-to-date with the Expert Analysis & Highlights.

Delete duplicate records with a query - Microsoft Support

For example, suppose a customer goes out of business and you need to delete all pending orders for that customer. To find just those records, you can add the Customer ID and Order Date ...

Access 2010 Query: Filter out duplicates - Microsoft Q&A

Oct 18, 2012 · I know how to filter the query to show only those checked 'yes' Due to the table needing to be based on what area, the query is pulling the 'yes' correctly, but I am getting ...

Eliminate duplicate records with this built-in Access query

Jan 29, 2002 · Effectively maintaining an Access database requires the regular removal of duplicate records. The Find Duplicates Query wizard handles this chore quickly and easily.

Exclude Duplicate Records from a Query - Access World Forums

Jan 11, 2024 · I think it's a question of establishing why you are seeing duplicates. Do the duplicates reflect the query you are trying to write, or does it mean your data contains ...

MS Access query to filter duplicates with criteria

Sep 26, 2016 · I tried writing a specific query just to filter out the duplicates in my VA05 (ZRAX) table with the switch() criteria but all the values returned to me is NULL.

Finding and Removing Duplicate Records in MS Access - Office 365

There are couple of ways to find the duplicate records and remove them. One is using the append query and another is Make table query. This video explains in detail how you can identify the...

Removing Duplicate Records in Microsoft Access

This article describes how to use Microsoft Access to remove duplicate records in a data collection.

How to Find Duplicates Easily in Microsoft Access: Best Way

Jan 31, 2023 · Access provides a query tool to find duplicates in your database. You can then remove or merge them, making your database easier to read and more effective. Know what ...

Find duplicate records with a query - Microsoft Support

Learn how to find duplicate data in your Access data using a query.

How to remove duplicate rows in microsoft access - YouTube

How to remove duplicate rows in Microsoft Access - 3 different ways In this episode, we're going to look at three ways that you can remove duplicates from your query and report output in...

Unlock the full potential of your RSLogix 5000 with our advanced instruction manual. Discover how to optimize your programming skills today!

[Back to Home](#)