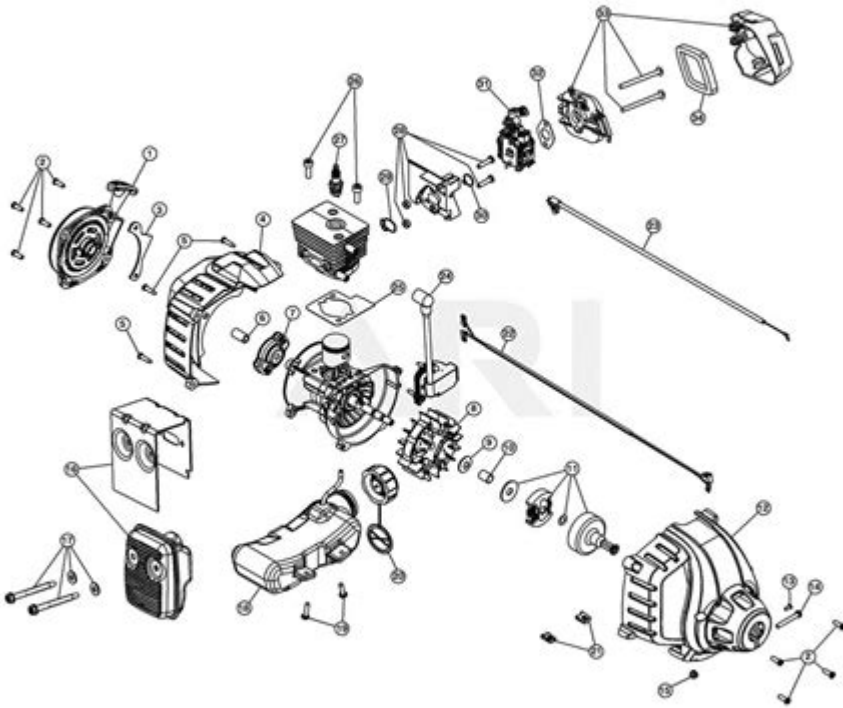


# Redmax Gz25n Parts Diagram



Page design © 2004-2017 by ARI Network Services, Inc.

**Redmax GZ25N parts diagram** is an essential tool for anyone who owns or services this high-performance string trimmer. Understanding the components and their functions can greatly simplify repairs and maintenance, ensuring that your Redmax GZ25N operates efficiently for years to come. In this article, we will delve into the various parts of the Redmax GZ25N, how to interpret the parts diagram, and tips for maintenance and replacement.

## Understanding the Redmax GZ25N

The Redmax GZ25N is a lightweight, yet powerful string trimmer, designed for both professional landscapers and homeowners. Its robust engine and ergonomic design make it a popular choice for tackling tough grass and weeds. However,

like any piece of equipment, it requires regular maintenance and occasional repairs. The parts diagram serves as an invaluable resource for identifying components and understanding their relationships.

## Parts of the Redmax GZ25N

When examining the **Redmax GZ25N parts diagram**, you will encounter a variety of components. Here's a breakdown of the main parts:

### 1. Engine Components

- Cylinder: The core of the engine where power is generated.
- Piston: Moves up and down within the cylinder, compressing the fuel-air mixture.
- Crankshaft: Converts the linear motion of the piston into rotational motion to drive the trimmer head.
- Spark Plug: Ignites the fuel-air mixture for combustion.

### 2. Fuel System

- Fuel Tank: Holds the fuel mixture.
- Fuel Filter: Prevents debris from entering the fuel system.
- Carburetor: Mixes air and fuel in the correct ratio for combustion.
- Primer Bulb: Helps to draw fuel into the carburetor for easy starting.

### 3. Cutting Assembly

- Trimmer Head: Houses the cutting line or blade.
- Spool: Contains and feeds the cutting line as it wears down.
- Guard: Protects the user from debris and helps direct grass clippings.

### 4. Drive System

- Drive Shaft: Transfers power from the engine to the trimmer head.
- Flex Shaft: Allows for flexibility and movement while trimming.

### 5. Handle and Controls

- Handlebar: Provides stability and control while operating the trimmer.
- Throttle Trigger: Controls the engine speed.
- Stop Switch: Shuts off the engine for safety.

# Interpreting the Parts Diagram

The **Redmax GZ25N parts diagram** is typically divided into sections that correspond to these main categories. Understanding how to read the diagram can make it easier to locate specific parts when performing maintenance or repairs.

## How to Read the Diagram

1. **Identify Sections:** The diagram is usually divided by major components—engine, fuel system, cutting assembly, etc. Familiarize yourself with these sections.
2. **Part Numbers:** Each part is assigned a unique number. This number is crucial when ordering replacements. Make a note of it for future reference.
3. **Visual References:** Parts are often illustrated with arrows indicating how they fit together. Pay attention to these illustrations to understand the assembly process.
4. **Notes and Annotations:** Some diagrams include notes about specific parts, such as maintenance tips or common issues. Be sure to read these annotations for additional insights.

## Common Issues and Replacement Parts

Even with proper maintenance, certain parts may wear out or fail over time. Here are some common issues associated with the Redmax GZ25N and the parts that may need replacement:

### 1. Engine Problems

- Symptoms: Difficulty starting, rough idling, or loss of power.
- Potential Parts to Replace:
  - Spark Plug
  - Air Filter
  - Carburetor

### 2. Fuel System Issues

- Symptoms: Fuel leaks, poor acceleration, or stalling.
- Potential Parts to Replace:
  - Fuel Filter
  - Fuel Lines
  - Primer Bulb

### **3. Cutting Assembly Failures**

- Symptoms: Ineffective cutting or excessive vibration.
- Potential Parts to Replace:
  - Trimmer Head
  - Cutting Line
  - Spool

### **4. Drive System Malfunctions**

- Symptoms: No rotation of the cutting head or unusual noises.
- Potential Parts to Replace:
  - Drive Shaft
  - Flex Shaft
  - Bearings

## **Maintenance Tips for Longevity**

To ensure the longevity and efficiency of your Redmax GZ25N, consider the following maintenance tips:

### **1. Regular Cleaning**

- After each use, clean the trimmer head and remove any debris that may have accumulated. This prevents clogging and improves performance.

### **2. Fuel Management**

- Use fresh fuel and mix it according to the manufacturer's specifications. Stale fuel can lead to starting issues and engine problems.

### **3. Inspect and Replace Parts Periodically**

- Regularly check the condition of the spark plug, air filter, and cutting line. Replace these parts as needed to maintain optimal performance.

### **4. Proper Storage**

- Store the trimmer in a dry place, away from direct sunlight. Consider using a protective cover to shield it from dust and debris.

# Conclusion

In summary, the **Redmax GZ25N parts diagram** is an essential resource for anyone looking to maintain or repair their string trimmer. By understanding the various components and how they work together, you can effectively troubleshoot issues and replace parts as necessary. Regular maintenance and proper care will ensure that your Redmax GZ25N remains a reliable tool for all your trimming needs. Whether you are a seasoned professional or a homeowner, investing time in understanding your equipment will pay off in performance and longevity.

## Frequently Asked Questions

### **What is the purpose of the Redmax GZ25N parts diagram?**

The Redmax GZ25N parts diagram provides a visual representation of the components and their arrangement, helping users identify and locate specific parts for maintenance and repairs.

### **Where can I find the Redmax GZ25N parts diagram?**

The parts diagram can typically be found in the user manual, on the Redmax official website, or through authorized dealers and service centers.

### **Is the Redmax GZ25N parts diagram applicable to other models?**

While some parts may be similar, the GZ25N parts diagram is specifically designed for that model. It's best to refer to the diagram for the corresponding model for accurate information.

### **How do I read the Redmax GZ25N parts diagram?**

To read the parts diagram, locate the numbered parts that correspond to the list provided, and use the visual to understand how each component fits into the assembly.

### **Can I order parts directly from the Redmax GZ25N parts diagram?**

Yes, you can use the parts diagram to identify the components you need and then order them through authorized Redmax dealers or online platforms.

### **What should I do if a part in the Redmax GZ25N parts**

## diagram is missing?

If a part is missing, consult the parts diagram to identify the specific part number, then contact a dealer for replacement options.

## Are there online forums discussing the Redmax GZ25N parts diagram?

Yes, there are online forums and communities where users discuss Redmax equipment, including the GZ25N parts diagram, sharing tips and experiences.

## How often should I refer to the Redmax GZ25N parts diagram?

It's advisable to refer to the parts diagram during regular maintenance checks or before disassembling the equipment for repairs to ensure you have all necessary parts.

## What tools do I need to use the Redmax GZ25N parts diagram effectively?

Basic tools such as screwdrivers, wrenches, and pliers are typically needed, along with the parts diagram to guide you through the assembly or disassembly process.

Find other PDF article:

<https://soc.up.edu.ph/40-trend/pdf?dataid=vrS65-6647&title=medicare-claims-processing-manual.pdf>

## Redmax Gz25n Parts Diagram

### **RedMax Mowers, Blowers, Trimmers, Edgers**

Buy RedMax pre-mixed fuel or oil and extend the standard consumer warranty up to 5 years! Learn more

*Welcome to redmax.ca*

This is the home of redmax.ca The story Cormidi was founded in 1995 by brothers Armando, Antonio, Massimiliano and Sandro Cormidi. Built in Italy, the Cormidi brothers have ...

### RedMax - Equipements ESF

Your trusted Canadian source for parts, engines, and outdoor equipment. Featuring top brands like Honda, Husqvarna, BE Power Equipment, and Stiga.

### **Red Max Mowers - Hawkeye Equipment Inc.**

RedMax allows the homeowner to "mow like a pro" with a residential unit featured like a

professional mower. With high performance engines and 10 gage fabricated decks, the RZTs ...

### **RedMax Products - dsmotors.ca**

RedMax One of the world's first outdoor power equipment manufacturers to take steps toward improving the environment.

### **RedMax SGCZ2460S Reciprocator Trimmer - Canadian Equipment ...**

RedMax SGCZ2460S Reciprocator Trimmer Product Code: SGCZ2460S - EST 103900 Manufacturer: RedMax - \$699.99 \$949.99 Quantity:

### **RedMax Parts by Equipment | PartsTree**

The best way to buy repair parts for your RedMax is to begin by searching for your RedMax model number on PartsTree and use the OEM RedMax parts diagrams to find the parts that fit ...

### **Trimmers - REDMAX - Mowers at Jacks**

Get Your Trimmers ( REDMAX) with Mowers at Jacks! Free freight shipping. Order online or by phone.

### *Commercial Weed & Grass String Trimmers | RedMax*

RedMax's line of heavy-duty, commercial grade trimmers can clear, trim or edge large areas of unwanted grass and weeds with ease.

### **REDMAX Zero Turn Lawn Mowers For Sale in Canada**

Search REDMAX Zero Turn Lawn Mowers for sale at MarketBook Canada. Find REDMAX RZT54X, CZT60+, CZT60X, and more.

### **RedMax Mowers, Blowers, Trimmers, Edgers**

Buy RedMax pre-mixed fuel or oil and extend the standard consumer warranty up to 5 years! Learn more

### *Welcome to redmax.ca*

This is the home of redmax.ca The story Cormidi was founded in 1995 by brothers Armando, Antonio, Massimiliano and Sandro Cormidi. Built in Italy, the Cormidi brothers have ...

### *RedMax - Equipements ESF*

Your trusted Canadian source for parts, engines, and outdoor equipment. Featuring top brands like Honda, Husqvarna, BE Power Equipment, and Stiga.

### *Red Max Mowers - Hawkeye Equipment Inc.*

RedMax allows the homeowner to "mow like a pro" with a residential unit featured like a professional mower. With high performance engines and 10 gage fabricated decks, the RZTs ...

### RedMax Products - dsmotors.ca

RedMax One of the world's first outdoor power equipment manufacturers to take steps toward improving the environment.

### RedMax SGCZ2460S Reciprocator Trimmer - Canadian Equipment ...

RedMax SGCZ2460S Reciprocator Trimmer Product Code: SGCZ2460S - EST 103900 Manufacturer: RedMax - \$699.99 \$949.99 Quantity:

### *RedMax Parts by Equipment | PartsTree*

The best way to buy repair parts for your RedMax is to begin by searching for your RedMax model number on PartsTree and use the OEM RedMax parts diagrams to find the parts that fit exactly ...

#### *Trimmers - REDMAX - Mowers at Jacks*

Get Your Trimmers ( REDMAX) with Mowers at Jacks! Free freight shipping. Order online or by phone.

#### *Commercial Weed & Grass String Trimmers | RedMax*

RedMax's line of heavy-duty, commercial grade trimmers can clear, trim or edge large areas of unwanted grass and weeds with ease.

#### REDMAX Zero Turn Lawn Mowers For Sale in Canada

Search REDMAX Zero Turn Lawn Mowers for sale at MarketBook Canada. Find REDMAX RZT54X, CZT60+, CZT60X, and more.

Explore the RedMax GZ25N parts diagram to find the exact components you need for repairs. Learn more about maintenance tips and parts sourcing today!

[Back to Home](#)