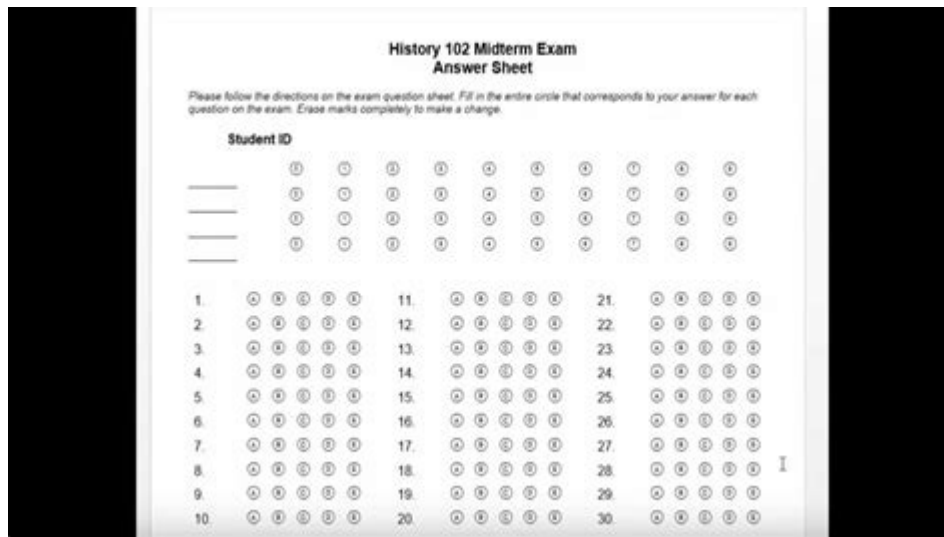


Relias Answer Key



Relias answer key is a term that resonates with many professionals in the healthcare and training sectors. Relias Learning, a leader in online training and education, provides a range of courses to help organizations improve their workforce's skills and knowledge. However, navigating the plethora of courses and assessments can be challenging. This article will delve into what the Relias answer key entails, its significance, and how it can enhance your learning experience.

Understanding Relias Learning

Relias Learning is an online platform designed to deliver high-quality training programs for various sectors, especially in healthcare. Their courses cover a wide array of topics, including:

- Compliance training
- Clinical skills
- Behavioral health

- Leadership and management

The platform emphasizes evidence-based learning and is focused on improving the competency of healthcare professionals. As a result, many organizations have adopted Relias Learning to ensure their staff remains up-to-date with the latest industry standards.

The Role of Assessments in Relias Learning

Assessments are a crucial component of any training program, and Relias Learning is no exception.

These assessments serve several purposes:

- **Knowledge evaluation:** Assessments help determine how much information the learner has retained.
- **Skill enhancement:** They provide an opportunity for learners to identify areas where they may need further education.
- **Compliance tracking:** Organizations can track which employees have completed required training and assessments.

The assessments usually consist of quizzes and tests that learners must complete at the end of each module or course. The results can be used to inform future training needs and enhance overall educational outcomes.

What Is the Relias Answer Key?

The Relias answer key refers to a compilation of correct answers for quizzes and assessments provided by Relias Learning. While these answer keys can be beneficial for learners striving to achieve high scores, it is essential to understand their appropriate use.

Significance of the Relias Answer Key

The Relias answer key plays a crucial role in the learning process. Here are some reasons why it is significant:

- **Self-assessment:** Learners can use the answer key to check their understanding of the material and see where they excelled or struggled.
- **Study aid:** The answer key can serve as a study tool, helping learners focus on specific areas that need improvement.
- **Improved retention:** Reviewing the correct answers can reinforce knowledge and aid in long-term retention of the material.

How to Use the Relias Answer Key Effectively

While the Relias answer key can be a valuable resource, it is essential to use it effectively to maximize learning outcomes. Here are some tips on how to use the answer key wisely:

1. Complete Assessments Without Cheating

The primary goal of completing assessments is to gauge your understanding of the material. Using the answer key during the assessment undermines this purpose. Instead, attempt the assessment independently first, then use the answer key afterward to check your answers.

2. Review Incorrect Answers

After checking your answers, focus on the questions you got wrong. Look up the relevant course material to understand why the correct answers are what they are. This practice helps reinforce learning and fills knowledge gaps.

3. Create a Study Guide

Use the answer key to create a study guide. List the questions you struggled with along with the correct answers. This personalized study material can help you prepare for future assessments or real-world applications of your knowledge.

4. Discuss with Peers

Engage with colleagues or fellow learners to discuss the assessments. Sharing insights and perspectives can deepen your understanding of the subject matter. Use the answer key as a reference point during these discussions to clarify any misunderstandings.

5. Use It as a Learning Tool

Instead of viewing the answer key solely as a means to achieve a high score, consider using it as a learning tool. Reflect on the content of the answers, and think critically about how they apply to real-world scenarios in your field.

Ethical Considerations

While the Relias answer key can enhance learning, it is crucial to approach its use with integrity. Here are some ethical considerations:

- **Respecting course integrity:** Using the answer key inappropriately can compromise the integrity of the assessment process.
- **Promoting accountability:** Strive to be accountable for your learning. Use the answer key as a tool for improvement rather than a shortcut.
- **Compliance with policies:** Be aware of your organization's policies regarding training and assessments, and ensure you abide by them.

Conclusion

In conclusion, the Relias answer key is a valuable resource for learners within the Relias Learning platform. By understanding its significance and using it effectively, learners can significantly enhance their educational experience. Remember to approach your assessments with integrity and use the

answer key as a tool for self-improvement rather than a means to an end. By doing so, you will not only succeed in your assessments but also gain the knowledge and skills necessary to excel in your professional role.

Frequently Asked Questions

What is the Relias Answer Key used for?

The Relias Answer Key is typically used to verify answers for assessments and training modules in healthcare and related fields, ensuring that users can check their understanding of the material.

How can I access the Relias Answer Key?

Access to the Relias Answer Key usually requires a user account on the Relias platform, where users can find answers after completing assessments or training modules.

Is the Relias Answer Key available for all courses?

Not all courses may have an answer key publicly available. It often depends on the specific course and the policies of the organization providing the training.

Can I use the Relias Answer Key for exam preparation?

Yes, the Relias Answer Key can be a helpful tool for exam preparation, allowing learners to assess their knowledge and identify areas needing improvement.

Are there any penalties for using the Relias Answer Key improperly?

Using the Relias Answer Key inappropriately, such as during an assessment, can lead to academic penalties or disciplinary action, depending on the institution's policies.

What types of questions are included in the Relias assessments?

Relias assessments often include multiple-choice questions, true/false questions, and scenario-based questions, designed to test knowledge in various healthcare topics.

How often is the Relias Answer Key updated?

The Relias Answer Key is typically updated in conjunction with course content revisions, which may occur periodically based on best practices and regulatory changes.

Who should I contact if I have issues with the Relias Answer Key?

If you encounter issues with the Relias Answer Key, it is best to contact Relias customer support or your organization's training coordinator for assistance.

Find other PDF article:

<https://soc.up.edu.ph/36-tag/Book?dataid=gXL85-9900&title=kracie-popin-cookin-english-instructions.pdf>

[Relias Answer Key](#)

Logging Into Your Account - Relias

Nov 6, 2024 · Step-by-step instructions and best practices on how to log into your Relias Platform account.

The Learner Home Page - Relias

Nov 5, 2024 · The Learner Home page highlights relevant information and links to help you stay in compliance with your training. Once logged in, there is a personalized welcome message in ...

Hi! How can we help? - Relias

How-To Videos Login Issues FAQ Relias Quick-start Guide Forgot Password Tutorial How to Enter Your License How to Print Certificates

Logging In: Organization ID - Relias

Apr 1, 2025 · Where to find your Organization ID for your Relias Platform account.

Logging In - Relias

Apr 1, 2025 · Logging In: Forgot My Password Learn how to use the "Forgot your Password?" link to access your Relias account.

Learning - Relias

Jun 23, 2025 · Relias Platform Course Accessibility Guide Relias offers modules that follow the ADA section for 508 compliance. View our recommendations intended to help facilitate your ...

The Learner Course Library - Relias

Apr 16, 2025 · Please contact your organization's Relias Administrator for more information. Accessing the Course Library To open the Course Library, click Course Library on the left ...

Licenses & Certifications Guide - Relias

5 days ago · Licenses & Certifications Guide Learn how to enter your license or certification, identify and enroll in continuing education courses, and access your certificates.

Relias Learner Mobile App

Apr 17, 2025 · Relias Learner Mobile App The new Relias Learner app creates an engaging and intuitive environment for completing assignments, exams, accessing and sharing certificates, ...

The Support Center: Learner - Relias

May 29, 2025 · Relias Updates Occasionally notices will be posted on the Relias Platform to inform you of any downtime in the platform or Relias Support closures. Announcements of this ...

Logging Into Your Account - Relias

Nov 6, 2024 · Step-by-step instructions and best practices on how to log into your Relias Platform account.

The Learner Home Page - Relias

Nov 5, 2024 · The Learner Home page highlights relevant information and links to help you stay in compliance ...

Hi! How can we help? - Relias

How-To Videos Login Issues FAQ Relias Quick-start Guide Forgot Password Tutorial How to Enter Your License ...

Logging In: Organization ID - Relias

Apr 1, 2025 · Where to find your Organization ID for your Relias Platform account.

Logging In - Relias

Apr 1, 2025 · Logging In: Forgot My Password Learn how to use the "Forgot your Password?" link to access your ...

Unlock the secrets to success with the Relias answer key! Enhance your learning experience and achieve top scores. Discover how to ace your assessments today!

[Back to Home](#)