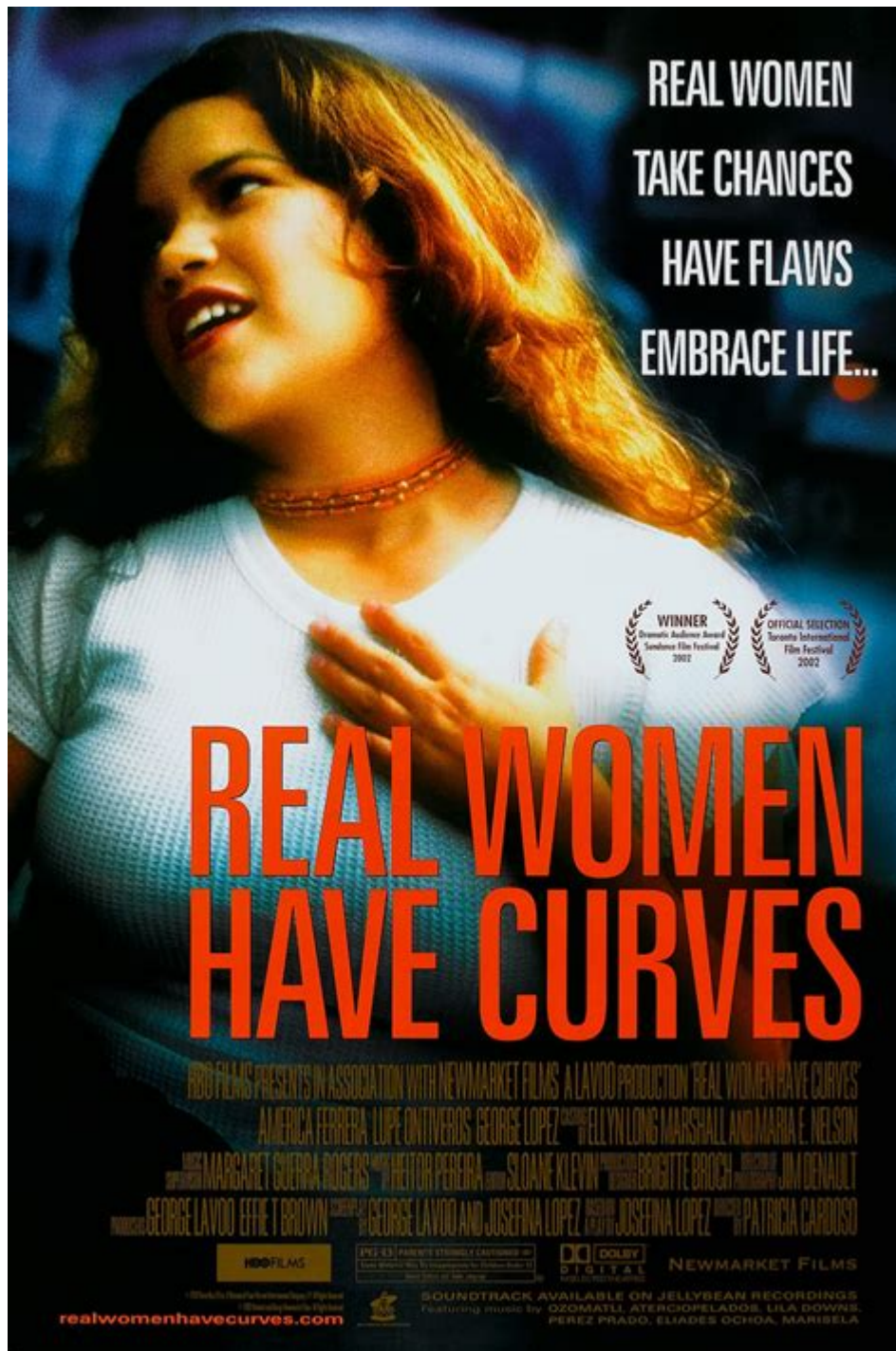


# Real Women Have Curves Analysis



**Real women have curves** is a phrase that has permeated popular culture, sparking conversations about body image, self-acceptance, and the beauty standards that society imposes on women. This phrase is not merely a statement about physical appearance; it embodies a deeper cultural narrative about femininity, empowerment, and the celebration of diversity in body shapes and sizes. The significance of this statement can be examined through various lenses, including historical context, societal impacts, representation in media, and the ongoing battle against body shaming. This article aims to explore these dimensions, highlighting the importance of embracing curves as a form of self-acceptance and empowerment for women.

# Historical Context of Body Image Standards

Understanding the phrase "real women have curves" requires an exploration of the historical context surrounding body image standards. Throughout history, the perception of beauty has evolved significantly, influenced by various cultural, political, and social factors.

## Ancient Beauty Ideals

In ancient civilizations, such as those in Greece and the Renaissance, fuller figures were often celebrated as symbols of wealth, fertility, and health. Women with curves were considered more attractive because they were perceived as capable of bearing children and thus ensuring the continuation of lineage.

## The Shift to Thinness

The 20th century saw a drastic shift in beauty ideals, with the rise of the fashion industry and media representation. The mid-century emergence of supermodels and Hollywood actresses, who often embodied a slim figure, led to a widespread belief that thinness equated to beauty. This shift was further exacerbated by the advent of dieting culture and the proliferation of weight-loss products. As a result, many women began to feel pressured to conform to these narrow standards of beauty.

## The Impact of Media Representation

Media plays a pivotal role in shaping societal beauty standards. The portrayal of women in films, advertisements, and magazines has a profound impact on how women perceive themselves and their bodies.

## Traditional Media vs. Social Media

- Traditional Media: Historically, traditional media has predominantly showcased thin, tall models, creating an unrealistic standard for beauty. This has often led to body dissatisfaction among women of all shapes and sizes.
- Social Media: The rise of social media has introduced a more diverse representation of body types, allowing individuals to share their experiences and challenge conventional beauty norms. Platforms like Instagram and TikTok have given rise to body positivity movements, where influencers and everyday women celebrate their curves and advocate for self-love.

## The Body Positivity Movement

The body positivity movement has been instrumental in reclaiming the narrative around body image. It encourages women to embrace their bodies,

regardless of size, and promotes the idea that all bodies are deserving of love and respect. This movement aligns closely with the phrase "real women have curves," as it emphasizes the importance of accepting and celebrating curvier body types.

## **Empowerment and Self-Acceptance**

The phrase "real women have curves" serves as a powerful mantra for many women. It is a declaration of self-acceptance and empowerment, encouraging women to embrace their natural bodies and reject society's unrealistic expectations.

## **Benefits of Embracing Curves**

- **Increased Self-Esteem:** Accepting one's body can lead to improved self-esteem and mental health. Women who embrace their curves often report feeling more confident and comfortable in their own skin.
- **Challenging Stereotypes:** By celebrating curves, women challenge the stereotypes associated with body size. This can help dismantle harmful perceptions that equate thinness with worthiness or success.
- **Creating Community:** The movement towards body positivity fosters a sense of community among women who share similar struggles with body image. This support network can be incredibly empowering, as women uplift one another and share their journeys.

## **Fashion and Representation**

The fashion industry has also begun to respond to the demand for more inclusive representation. Many brands now offer plus-size clothing lines, and curvier models are increasingly featured in campaigns and runway shows. This shift not only validates curvier women but also broadens the definition of beauty in the fashion world.

## **The Ongoing Battle Against Body Shaming**

Despite the progress made in body positivity and representation, body shaming remains a significant issue. Many women still face criticism and judgment for their bodies, whether they are curvier or slimmer than societal norms dictate.

## **Understanding Body Shaming**

Body shaming refers to the act of mocking or criticizing someone based on their body shape or size. It can manifest in various forms, including:

1. **Verbal Remarks:** Comments made by friends, family, or even strangers can

negatively impact a woman's self-image.

2. **Social Media Criticism:** The anonymity of social media can lead to harsh comments and comparisons, fostering an environment of negativity.

3. **Internalized Shame:** Women may internalize societal standards and shame themselves for not conforming to them, further perpetuating the cycle of body dissatisfaction.

## **Combatting Body Shaming**

To combat body shaming, it is crucial to promote a culture of acceptance and kindness. Strategies include:

- **Education:** Raising awareness about the harmful effects of body shaming can help create a more supportive environment for women of all shapes.
- **Positive Reinforcement:** Encouraging positive conversations about body image and celebrating diversity can foster a sense of belonging and acceptance.
- **Media Literacy:** Teaching individuals to critically evaluate media messages can empower them to reject unrealistic beauty standards and embrace their unique bodies.

## **Conclusion**

In conclusion, the phrase "real women have curves" encapsulates a powerful message about self-acceptance, empowerment, and the celebration of diversity in body types. As society continues to evolve, it is essential to challenge traditional beauty standards and embrace all forms of femininity. The journey towards body acceptance is ongoing, and while significant progress has been made, there remains work to be done. By fostering a culture that values diversity and promotes body positivity, we can ensure that all women feel seen, valued, and empowered, regardless of their shape or size. Embracing curves is not just about physical appearance; it is about reclaiming autonomy over one's body and celebrating the uniqueness that each woman brings to the world.

## **Frequently Asked Questions**

### **What is the main theme of 'Real Women Have Curves'?**

The main theme revolves around body positivity and the celebration of diverse body shapes, challenging societal standards of beauty.

### **How does 'Real Women Have Curves' address cultural identity?**

The film explores cultural identity through the lens of a Mexican-American family, highlighting the conflict between traditional values and modern expectations.

## What role does family play in 'Real Women Have Curves'?

Family dynamics are central to the story, showcasing both support and pressure regarding body image and personal choices.

## In what ways does the film challenge stereotypes about women?

The film challenges stereotypes by portraying women of different shapes and sizes as complex individuals with aspirations beyond their appearance.

## How does the protagonist's journey reflect broader societal issues?

The protagonist's journey reflects broader societal issues related to self-acceptance, empowerment, and the struggle against unrealistic beauty standards.

## What impact did 'Real Women Have Curves' have on discussions about body image?

The film sparked important discussions about body image, encouraging audiences to embrace their bodies and advocate for representation in media.

## What messages about self-acceptance are conveyed in the film?

The film conveys messages of self-acceptance, emphasizing that beauty comes in all forms and encouraging women to love themselves as they are.

## How does the film's setting contribute to its overall message?

The film's setting in a working-class community adds depth to its message by showcasing the realities of life for many women, reinforcing the importance of authenticity and self-worth.

Find other PDF article:

<https://soc.up.edu.ph/14-blur/pdf?ID=cDN36-9637&title=context-clues-worksheets-3rd-grade.pdf>

## Real Women Have Curves Analysis

*float*  $\rightarrow$  *real*  $\rightarrow$   $\text{float} \rightarrow \text{real}$

$\text{real} = \text{float} (24) \text{ numeric } (p,s) - 10^{+38} + 1 \rightarrow 10^{+38} - 1$   $\text{float} \rightarrow \text{real} \rightarrow \text{float} \rightarrow \text{real}$   $\rightarrow$   $\text{float} \rightarrow \text{real}$   $\rightarrow$  IEEE 754  $\rightarrow$   $\text{float} \rightarrow \text{real}$

$\rightarrow$  *genuine, authentic, true, real, actual?* -  $\rightarrow$

Oct 10, 2019 · real 1. genuine 2. true 3. authentic 1. 2. 3.

ABPLCINTDINTSINTREALBOOL ...

4REAL 21282128 5BOOL 01 PLC 1. 2. 3.

real\_

realize, realized, realizable, reality, realizably, really, realness, 1. It is a real gold watch. 2.

2025ARXREAL Oneair3 ...

Mar 4, 2025 · ARXREAL OneVITURE ProAir3starv view 4AR

real -

emmmm 3

2025realme -

2025realme redmi realme

fluentreal gas model ...

Feb 23, 2025 · Real Gas Model Peng-Robinson Cp 3.

OPPOrealme -

realmeOPPO201854OPPOrealme1

Realtek?

win10Realtek 1.

float real

real=float (24) numeric (p,s) - 10^38 + 1 10^38 - 1 float real float real IEEE 754

genuine, authentic, true, real, actual? -

Oct 10, 2019 · real genuine true

ABPLCINTDINTSINTREALBOOL...

4REAL 21282128 5BOOL 01 PLC

real\_

realize, realized, realizable, reality, realizably, really, realness, 1. It is a real gold watch.

2025ARXREAL One

Mar 4, 2025 · [AR](#) [AR](#) [XREAL](#)  
[One](#) [VITURE Pro](#) [Air3](#) [starv](#) ...

[real](#) - [emmmmm](#) [ε](#) [3](#)

**2025** [realme](#) - [2025](#) [realme](#) [redmi](#) [realme](#) ...

[fluent](#) [real gas model](#) ...  
Feb 23, 2025 · [Real Gas Model](#) [Peng-Robinson](#) ...

[OPPO](#) [realme](#) - [realme](#) [OPPO](#) [2018](#) [5](#) [4](#) [OPPO](#) ...

[Realtek](#)? - [win10](#) [Realtek](#) [1.](#) ...

Explore our in-depth analysis of "Real Women Have Curves"

[Back to Home](#)