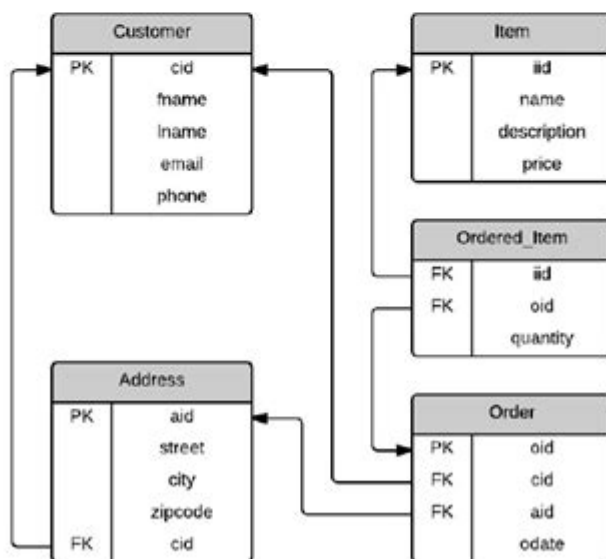


Relational Algebra Questions And Answers

Relational Algebra Exercises 1

Write the relational algebra expressions for the following queries. Use the database schema given below.

1. Find the full names and phone numbers of the customers.
2. Find the orders placed on 01-01-2020.
3. Find the names and descriptions of the products (items) cheaper than 50 TL.
4. Find the full names and phone numbers of the customers who have placed orders on 01-01-2020.
 - a. Solve using Cartesian product.
 - b. Solve using Natural join.
5. Find the cities which had orders on:
 - a. 01-01-2020.
 - b. 01-01-2020 or 01-01-2021 (use set union).
6. Find the names and prices of the products (items) in the order "762".
7. Find the price of the order "762".



Relational algebra questions and answers are essential for anyone looking to deepen their understanding of database management and query formulation. This foundational concept in computer science serves as a theoretical framework for database operations, allowing users to manipulate and retrieve data efficiently. In this article, we will explore various relational algebra questions, providing detailed answers and explanations. We will cover the fundamental operations, examples, and practical applications, ensuring a comprehensive understanding of the topic.

Understanding Relational Algebra

Relational algebra is a procedural query language that operates on relational databases. It consists of a set of operations that take one or more relations as input and produce a new relation as output. The primary goal is to allow users to perform queries and retrieve specific data from a database.

Key Operations in Relational Algebra

There are several key operations in relational algebra, including:

1. Selection (σ): This operation selects rows from a relation that satisfy a specified condition.
2. Projection (π): This operation retrieves specific columns from a relation, allowing users to focus on the relevant data.
3. Union (\cup): This operation combines the tuples of two relations, eliminating duplicates.
4. Intersection (\cap): This operation returns the common tuples between two relations.
5. Difference ($-$): This operation returns the tuples that are in one relation but not in another.
6. Cartesian Product (\times): This operation combines every tuple of one relation with every tuple of another relation.
7. Join (\Join): This operation merges two relations based on a related attribute.

Common Relational Algebra Questions

In this section, we will delve into some common relational algebra questions, providing answers and explanations.

Question 1: What is the difference between selection and projection?

Answer: The selection and projection operations serve different purposes in relational algebra.

- Selection (σ): This operation filters rows based on a specified predicate. For example, if we have a relation R with attributes A, B, and C, using selection can help us retrieve all rows where attribute A equals a specific value.

Example:

$\sigma(A='value')(R)$

- Projection (π): This operation is used to retrieve specific columns from a relation. It eliminates any duplicate rows in the process.

Example:

$\pi(A, B)(R)$

In summary, selection focuses on rows, while projection focuses on columns.

Question 2: How do you perform a union operation in relational algebra?

Answer: The union operation combines two relations that have the same attributes. The result contains all tuples from both relations, with duplicates removed.

To perform a union, both relations must be union-compatible, meaning they have the same number of attributes and corresponding data types.

Example: If we have two relations, R1 and R2, the union operation can be expressed as:

$R1 \cup R2$

This operation will yield a new relation containing all tuples from R1 and R2 without duplicates.

Question 3: Explain the concept of Cartesian product with an example.

Answer: The Cartesian product (\times) of two relations produces a new relation that consists of all possible combinations of tuples from the two relations. This operation results in a relation with a number of attributes equal to the sum of the attributes of both relations.

Example: Let's consider two relations:

- R1(A, B)

- R2(C, D)

The Cartesian product $R1 \times R2$ will result in a relation with attributes (A, B, C, D), containing all combinations of tuples from R1 and R2.

If R1 has n tuples and R2 has m tuples, the resulting Cartesian product will have n m tuples.

Question 4: What is the significance of the join operation in relational algebra?

Answer: The join operation is one of the most powerful features in relational algebra, allowing users to combine related data from two or more relations based on a common

attribute. There are several types of joins, including inner join, outer join, and natural join.

- Inner Join (\bowtie): This operation returns only the tuples that have matching values in the specified attribute(s) from both relations.

Example:

$R1 \bowtie R2$ on $R1.A = R2.C$

- Outer Join: This operation extends the inner join by including tuples that do not have matching values in one or both relations. It can be further divided into:
 - Left Outer Join: Includes all tuples from the left relation and matching tuples from the right relation.
 - Right Outer Join: Includes all tuples from the right relation and matching tuples from the left relation.
 - Full Outer Join: Includes all tuples from both relations, with nulls in places where there are no matches.

The join operation is crucial for retrieving relevant data from multiple tables in a relational database.

Practical Applications of Relational Algebra

Relational algebra questions and answers are not just academic; they have real-world applications in database management and data analysis. Below, we discuss some practical applications.

Application 1: Data Retrieval in Databases

Relational algebra forms the foundation for Structured Query Language (SQL), the standard language for managing relational databases. Understanding relational algebra helps database administrators and developers write efficient queries to retrieve and manipulate data.

Application 2: Query Optimization

Database systems often optimize queries for better performance. Knowledge of relational algebra allows developers to understand how different operations can be combined or reordered to minimize resource usage, leading to faster query execution.

Application 3: Data Integration

In scenarios where data from multiple sources need to be combined, relational algebra provides a systematic approach to join and union data efficiently. This is especially

important in data warehousing and business intelligence applications.

Application 4: Teaching and Learning

Relational algebra is a common subject in computer science curricula. It provides students with a solid understanding of how databases work and the principles behind data manipulation.

Conclusion

In summary, relational algebra questions and answers provide a robust framework for understanding the operations and principles behind relational databases. By grasping the fundamental operations such as selection, projection, union, Cartesian product, and join, individuals can effectively manage and manipulate data in real-world applications. The importance of relational algebra in database design, query optimization, and data integration cannot be overstated, making it an essential topic for anyone pursuing a career in computer science or database management. Understanding these concepts not only enhances one's technical skills but also equips professionals to tackle complex data challenges in a variety of fields.

Frequently Asked Questions

What is relational algebra?

Relational algebra is a formal system for manipulating relations, which are sets of tuples, using a set of operations such as selection, projection, union, set difference, and Cartesian product.

What is the difference between selection and projection in relational algebra?

Selection (σ) is used to retrieve rows from a relation that satisfy a certain condition, while projection (π) is used to retrieve specific columns from a relation.

How do you perform a union operation in relational algebra?

The union operation (\cup) combines the tuples of two relations, removing duplicates, and is only applicable if both relations have the same attributes.

What does the Cartesian product do in relational

algebra?

The Cartesian product (\times) combines two relations to produce a new relation that contains all possible combinations of tuples from the two relations.

Can you explain the set difference operation in relational algebra?

The set difference operation ($-$) returns tuples that are present in the first relation but not in the second relation, effectively subtracting one set from another.

What is the purpose of the rename operation in relational algebra?

The rename operation (ρ) allows you to change the name of a relation or its attributes, which can help in managing and clarifying the output of operations.

What is a join operation in relational algebra?

Join operations combine tuples from two relations based on a related attribute, producing a new relation. There are various types of joins, such as inner join, outer join, and natural join.

How does the intersection operation work in relational algebra?

The intersection operation (\cap) retrieves tuples that are common to both relations, requiring both relations to have the same attributes.

What are the key properties of relational algebra?

Key properties include closure (the result of operations is always a relation), commutativity (for operations like union and intersection), and associativity.

How can relational algebra be used in database queries?

Relational algebra provides a theoretical foundation for querying databases, allowing users to describe the desired data manipulation and retrieval processes in a structured way.

Find other PDF article:

<https://soc.up.edu.ph/47-print/files?trackid=hTv21-2263&title=poison-study-maria-v-snyder.pdf>

Relational Algebra Questions And Answers

I just scanned a document from my printer. Where do I find them, ...

When I scan a document on my printer, where do I find it?

My copilot says I reached the "daily limit" after one (1) image.

Apr 30, 2025 · However, today it only allowed one image. And after I got the message that the daily limit has been reached, ALL of my images every generated are replaced with a "Daily limit reached.

Finding out where the Windows 10 lock screen photos are from ...

Jul 16, 2024 · But today (4/30/25) when I have hit the lock screen, I'm only getting the beautiful landscape photograph with a small menu for news and weather across the bottom and NO "Like what you see?" text appearing on the screen to scroll over ...

Excel - COUNTIF with Dates in relation to =TODAY()

Excel - COUNTIF with Dates in relation to =TODAY () I am putting together a weekly sales tracker for my sales team. I have a sales log on one sheet where all of the job information is put in (one job per row). I am having trouble with a function to give me a total jobs sold for the 7 days prior.

SpanishDictionary.com | English to Spanish Translation, Dictionary ...

SpanishDictionary.com is the world's largest online Spanish-English dictionary, translator, and reference tool.

Spanish Translation | Spanish to English to Spanish Translator

Translate millions of words and phrases for free on SpanishDictionary.com, the world's largest Spanish-English dictionary and translation website.

Display both Date and Time in Outlook - Microsoft Community

Hi TJBassett, If you mean you want to see the date and detailed time the emails coming as following? If yes, to show the date and time in the message preview, you can go to View > View Settings > Format Columns > click Received under Available fields > select your Format > OK > OK. (it will be applied to the folder you click on, so before you set up, click on the folder you ...

After 29.05.25 Update no more signatures in new outlook!

May 29, 2025 · After the last Windows update today, all my signatures for New Outlook are gone. There is also no way to add individual signatures to all my different mail accounts anymore.

Today in Spanish | English to Spanish Translation

Translate Today. See 4 authoritative translations of Today in Spanish with example sentences, phrases and audio pronunciations.

Is MS loop experiencing problems? All my workspaces bar one ...

Aug 29, 2024 · Per title - I rely heavily on MS loop and today all my loop workspaces have disappeared. But I can still see the individual pages, showing under 'recent'... Help?! Is this an MS side issue or has

Change email address of msi account - MSI Global English Forum

May 13, 2021 · actually the email address can be changed by logging on to account.msi.com login page, then scroll down to the Account section and click on the Login Management link. I had to make a quick email address change to my MSI profile from the MSI account site since one of the email providers I use will be shutting down for good by the end of August 2021 and I will no ...

Unable to log in to MSI account - MSI Global English Forum

Sep 6, 2021 · The rest all have you complete the accoutn login, which immedaitely takes you to the page telling you to activate your account first. So a phone call is my only hope, likely yours as well.

MSI Global English Forum

Jul 17, 2025 · For you to discuss gaming related topics such as gaming events, your best settings, and etc. No Spam! Thanks! :)

Claw 8 AI+ update caused sound and gfx stuttering

Jun 4, 2025 · I updated the recommended Intel drivers + what Windows update was pushing. After installation, the device is not working while the 'Intel AI Boost' 8n device manager is enabled. I initially wiped the device and reinstall Windows, but the updates were instantly applied (I assume) as the issue was present almost immediately on login. I've reported this to MSI and ...

[Update] MSI Center M 2.0.2501.0601 Released (For Claw 8/7 AI+)

Jan 14, 2025 · New version have already been pushed via Live Update in MSI Center M, and will be available later for downloading on the official support page. Bugfix: • Controller now recognizes Ubisoft Connect and auto switches to Gamepad Mode. • Fixed where some items in Live Update does not update. • Fixed controller and bluetooth connection stability. • Fixed UI consistency ...

How to Optimize Gaming Performance on MSI Laptop

Oct 2, 2024 · Hi everyone, I recently bought an MSI GF63 laptop, and I'm pretty happy with its overall performance. That said, I'm looking for some advice on how to get the most out of it when gaming, especially for heavy titles like Cyberpunk 2077 or Assassin's Creed Valhalla. I'm already using MSI Dragon Center to adjust performance modes and optimize the system, but I feel like ...

MSI Global English Forum

Sep 5, 2024 · Hi, as in the header. Unable to log in to MSI account using the correct email and password as always. Captcha 100% correctly put. Anybody else facing trouble logging into MSI account? It keeps saying "Login failed, wrong account or password".

Cannot log in to Dragon Center. - MSI Global English Forum

Jan 10, 2021 · My password is correct as I changed it. I am using the email I registered the product, a GR66 Raider 10SFS laptop, with and still cannot log in. I am able to use the Dragon Center and all of its functions just fine. Thank you for your time and feedback.

Claw controllers are not working | MSI Global English Forum

Jan 1, 2025 · my msi claw internal controllers are not working after firmware 1.61 updates. I can only use the touch screen and i cant play games anymore. How to uninstall firmware 1.61 update ?

[Fixed] Ene.sys driver cannot load among system startup

Oct 21, 2022 · If the Ene.sys driver cannot load during system startup, try reinstalling the driver or updating it to the latest version. Ensure that your system files are not corrupted and check for compatibility issues. If problems persist, consult technical support for further assistance. Cannabis Store Discover King Kind, your licensed cannabis concierge, for premium products and ...

Explore essential relational algebra questions and answers to boost your understanding. Master the concepts and practice effectively. Learn more now!

[Back to Home](#)