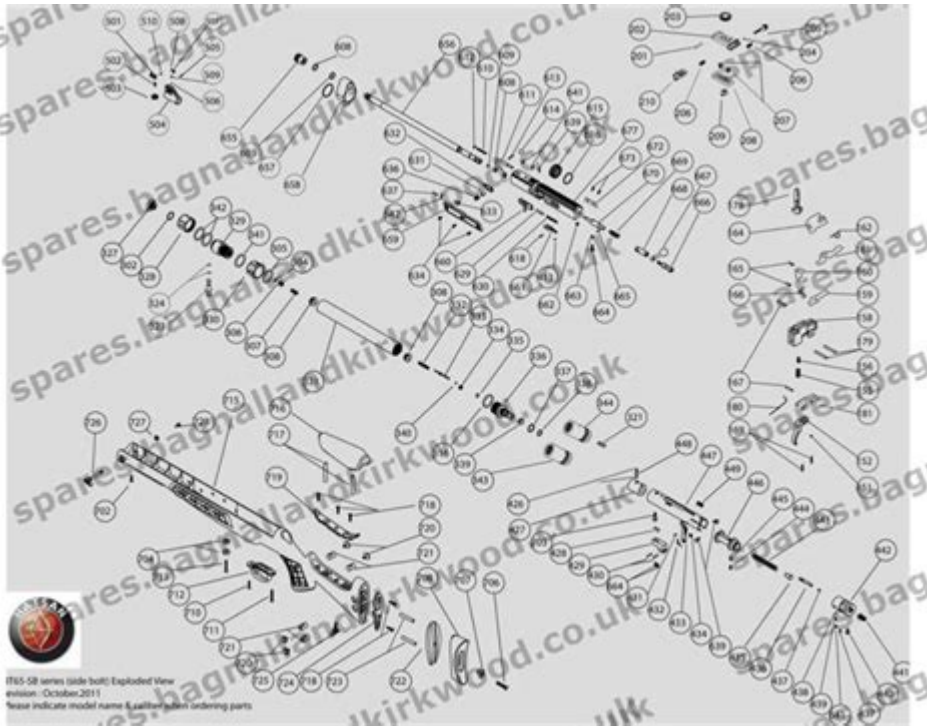


# Redmax Gz30n Parts Diagram



Redmax GZ30N Parts Diagram is an essential resource for anyone who owns or maintains this powerful and reliable handheld blower. Understanding the parts and their functions can significantly aid in troubleshooting, repairs, and general maintenance. The Redmax GZ30N is known for its efficiency, making it a popular choice among landscape professionals and homeowners alike. This article will delve into the various components of the GZ30N, how to interpret the parts diagram, common issues, and maintenance tips.

## Understanding the Redmax GZ30N

The Redmax GZ30N is a gas-powered backpack blower designed for heavy-duty use. It is equipped with a powerful engine that provides ample airflow and speed, making it effective for clearing leaves, debris, and grass clippings from large areas.

## Key Features of the Redmax GZ30N

1. **Powerful Engine:** The GZ30N features a robust two-stroke engine, which delivers high performance and efficiency.
2. **Lightweight Design:** Despite its power, the blower is designed to be lightweight, minimizing user fatigue during extended use.
3. **Ergonomic Handle:** The handle is crafted for comfort, allowing for easier maneuverability and control.
4. **High Airflow Rate:** The blower generates a high volume of air, essential for effective debris removal.
5. **Durability:** Built with quality materials, the GZ30N is designed to withstand the rigors of frequent

use.

## Parts of the Redmax GZ30N

To fully appreciate the Redmax GZ30N parts diagram, it's crucial to understand the major components of the blower. Each part plays a significant role in the overall function of the machine. Below are the primary parts commonly found in the GZ30N.

### 1. Engine Assembly

The engine assembly is the heart of the GZ30N. It consists of the following components:

- Cylinder: Houses the piston and is where combustion occurs.
- Piston: Moves up and down to create the power needed for operation.
- Spark Plug: Ignites the fuel-air mixture for combustion.
- Carburetor: Mixes fuel and air in the right proportions for optimal combustion.
- Fuel Tank: Stores the gasoline used for the engine.

### 2. Blower Housing

The blower housing encases the engine and directs airflow. Key components include:

- Fan: Converts engine power into air movement.
- Air Inlet: Allows air to enter the housing for the fan to push out.
- Deflector: Directs the airflow to the desired direction.

### 3. Fuel System

The fuel system is crucial for the operation and includes:

- Fuel Lines: Transport fuel from the tank to the carburetor.
- Fuel Filter: Keeps debris out of the fuel system.
- Primer Bulb: Helps to start the engine by drawing fuel into the carburetor.

### 4. Ignition System

The ignition system is responsible for starting the engine and includes:

- Ignition Coil: Generates the spark needed for combustion.
- Kill Switch: Allows the user to shut off the engine quickly.

## 5. Exhaust System

The exhaust system removes combustion gases from the engine and includes:

- Muffler: Reduces engine noise and directs exhaust gases out of the unit.
- Exhaust Port: Where the gases exit the engine.

## 6. Controls and Accessories

User control is essential for effective operation and includes:

- Throttle Control: Regulates engine speed.
- Choke Lever: Assists in starting the engine, especially in cold conditions.
- Straps and Harness: Supports the blower on the user's back for comfortable operation.

## Reading the Parts Diagram

The Redmax GZ30N parts diagram is a visual representation of all these components and their relationships. Understanding how to read the diagram is vital for anyone looking to replace parts or conduct repairs.

## Key Elements of the Parts Diagram

1. Labels and Numbers: Each part is labeled with a number that corresponds to the parts list. This makes it easy to identify and order replacements.
2. Sections: The diagram is usually divided into sections, such as the engine, blower housing, fuel system, etc. This makes it easier to locate specific parts.
3. Exploded View: The diagram is often presented in an exploded view format, showing how parts fit together and their spatial arrangement.

## How to Use the Parts Diagram

- Identify the Problem: Start by diagnosing the issue you're facing with your GZ30N.
- Refer to the Diagram: Locate the component related to the issue in the parts diagram.
- Order Replacement Parts: Use the part numbers from the diagram to order replacements from authorized dealers or online retailers.
- Follow Assembly Instructions: If reassembling, ensure to follow the exploded view carefully to avoid misalignments.

# Common Issues and Troubleshooting

Even with regular maintenance, issues can arise with the Redmax GZ30N. Below are some common problems and how to troubleshoot them:

## 1. Engine Won't Start

- Check Fuel Level: Ensure there is enough fuel in the tank.
- Inspect the Spark Plug: A fouled or damaged spark plug can prevent starting.
- Examine the Fuel Lines: Look for clogs or leaks in the fuel lines.

## 2. Poor Airflow

- Clean the Air Filter: A clogged air filter can restrict airflow.
- Inspect the Fan: Ensure the fan is not obstructed by debris.

## 3. Excessive Vibration

- Check for Loose Bolts: Tighten any loose bolts in the housing.
- Inspect the Engine Mounts: Worn or damaged mounts can cause vibrations.

## 4. Difficulty with Controls

- Lubricate Moving Parts: Ensure that throttle and choke controls are lubricated.
- Inspect for Damage: Check for any cracks or damage to the control levers.

## Maintenance Tips for Longevity

Proper maintenance can extend the life of your Redmax GZ30N. Here are some maintenance tips to keep your blower running smoothly:

- Regularly Clean the Air Filter: A clean air filter ensures optimal airflow and engine performance.
- Change Spark Plug Annually: Regular replacement can prevent starting issues.
- Use Quality Fuel: Avoid using low-quality fuel to prevent buildup in the carburetor.
- Inspect Fuel Lines: Regularly check for cracks or leaks in the fuel lines.
- Store Properly: During off-seasons, store the blower in a dry place and drain the fuel to prevent engine damage.

# Conclusion

In summary, the Redmax GZ30N parts diagram is an invaluable tool for owners and technicians alike. By understanding the various components of this powerful blower, users can effectively troubleshoot issues, perform repairs, and execute maintenance. With proper care, the Redmax GZ30N can provide years of reliable service, making yard work efficient and less burdensome. By mastering the parts and utilizing the diagram, users can keep their blower in optimal condition and ensure it performs at its best.

## Frequently Asked Questions

### **What is a Redmax GZ30N and why might I need a parts diagram?**

The Redmax GZ30N is a professional-grade backpack blower used for landscaping and yard maintenance. A parts diagram is essential for identifying specific components and their arrangement, which is helpful for repairs, maintenance, and replacement of parts.

### **Where can I find a parts diagram for the Redmax GZ30N?**

You can find the parts diagram for the Redmax GZ30N on the official Redmax website, authorized dealer sites, or in the owner's manual that came with the equipment. Additionally, parts diagrams are often available on aftermarket parts websites.

### **What are common issues that might require consulting the Redmax GZ30N parts diagram?**

Common issues include engine starting problems, reduced airflow, and general wear and tear on components. Consulting the parts diagram can help identify which parts may need replacing or servicing.

### **Are there any specific tools recommended for working on the Redmax GZ30N based on the parts diagram?**

Yes, common tools include screwdrivers, wrenches, and pliers. Depending on the specific parts being serviced, you may also need specialized tools like torque wrenches or socket sets, which can be referenced in the maintenance manual alongside the parts diagram.

### **Can I use a parts diagram from a different model for my Redmax GZ30N?**

No, it is not recommended to use a parts diagram from a different model as parts may vary significantly. Always refer to the specific parts diagram for the Redmax GZ30N to ensure correct identification and compatibility of parts.

Find other PDF article:

<https://soc.up.edu.ph/23-write/Book?trackid=SJI07-1611&title=free-printable-stem-worksheets.pdf>

## **Redmax Gz30n Parts Diagram**

*RedMax Mowers, Blowers, Trimmers, Edgers*

Buy RedMax pre-mixed fuel or oil and extend the standard consumer warranty up to 5 years! Learn more

*Welcome to redmax.ca*

This is the home of redmax.ca The story Cormidi was founded in 1995 by brothers Armando, Antonio, Massimiliano and Sandro Cormidi. Built in Italy, the Cormidi brothers have ...

### **RedMax - Equipements ESF**

Your trusted Canadian source for parts, engines, and outdoor equipment. Featuring top brands like Honda, Husqvarna, BE Power Equipment, and Stiga.

Red Max Mowers - Hawkeye Equipment Inc.

RedMax allows the homeowner to "mow like a pro" with a residential unit featured like a professional mower. With high performance engines and 10 gage fabricated decks, the RZTs ...

*RedMax Products - dsmotors.ca*

RedMax One of the world's first outdoor power equipment manufacturers to take steps toward improving the environment.

RedMax SGCZ2460S Reciprocator Trimmer - Canadian Equipment ...

RedMax SGCZ2460S Reciprocator Trimmer Product Code: SGCZ2460S - EST 103900 Manufacturer: RedMax - \$699.99 \$949.99 Quantity:

### **RedMax Parts by Equipment | PartsTree**

The best way to buy repair parts for your RedMax is to begin by searching for your RedMax model number on PartsTree and use the OEM RedMax parts diagrams to find the parts that fit ...

### **Trimmers - REDMAX - Mowers at Jacks**

Get Your Trimmers ( REDMAX) with Mowers at Jacks! Free freight shipping. Order online or by phone.

### **Commercial Weed & Grass String Trimmers | RedMax**

RedMax's line of heavy-duty, commercial grade trimmers can clear, trim or edge large areas of unwanted grass and weeds with ease.

### **REDMAX Zero Turn Lawn Mowers For Sale in Canada**

Search REDMAX Zero Turn Lawn Mowers for sale at MarketBook Canada. Find REDMAX RZT54X, CZT60+, CZT60X, and more.

RedMax Mowers, Blowers, Trimmers, Edgers

Buy RedMax pre-mixed fuel or oil and extend the standard consumer warranty up to 5 years! Learn

more

### **Welcome to redmax.ca**

This is the home of redmax.ca The story Cormidi was founded in 1995 by brothers Armando, Antonio, Massimiliano and Sandro Cormidi. Built in Italy, the Cormidi brothers have revolutionized the development and production of versatile tracked mini loaders and dumpers with self loading capabilities that are compatible with a wide range of attachments that make this the perfect ...

### **RedMax - Equipements ESF**

Your trusted Canadian source for parts, engines, and outdoor equipment. Featuring top brands like Honda, Husqvarna, BE Power Equipment, and Stiga.

### **Red Max Mowers - Hawkeye Equipment Inc.**

RedMax allows the homeowner to "mow like a pro" with a residential unit featured like a professional mower. With high performance engines and 10 gage fabricated decks, the RZTs are up to the task season after season.

*RedMax Products - dsmotors.ca*

RedMax One of the world's first outdoor power equipment manufacturers to take steps toward improving the environment.

### **RedMax SGCZ2460S Reciprocator Trimmer - Canadian Equipment ...**

RedMax SGCZ2460S Reciprocator Trimmer Product Code: SGCZ2460S - EST 103900 Manufacturer: RedMax - \$699.99 \$949.99 Quantity:

RedMax Parts by Equipment | PartsTree

The best way to buy repair parts for your RedMax is to begin by searching for your RedMax model number on PartsTree and use the OEM RedMax parts diagrams to find the parts that fit exactly like the originals from the RedMax factory.

### **Trimmers - REDMAX - Mowers at Jacks**

Get Your Trimmers ( REDMAX) with Mowers at Jacks! Free freight shipping. Order online or by phone.

### **Commercial Weed & Grass String Trimmers | RedMax**

RedMax's line of heavy-duty, commercial grade trimmers can clear, trim or edge large areas of unwanted grass and weeds with ease.

*REDMAX Zero Turn Lawn Mowers For Sale in Canada*

Search REDMAX Zero Turn Lawn Mowers for sale at MarketBook Canada. Find REDMAX RZT54X, CZT60+, CZT60X, and more.

Explore our detailed Redmax GZ30N parts diagram to find the exact components you need. Learn more to keep your equipment running smoothly!

[Back to Home](#)