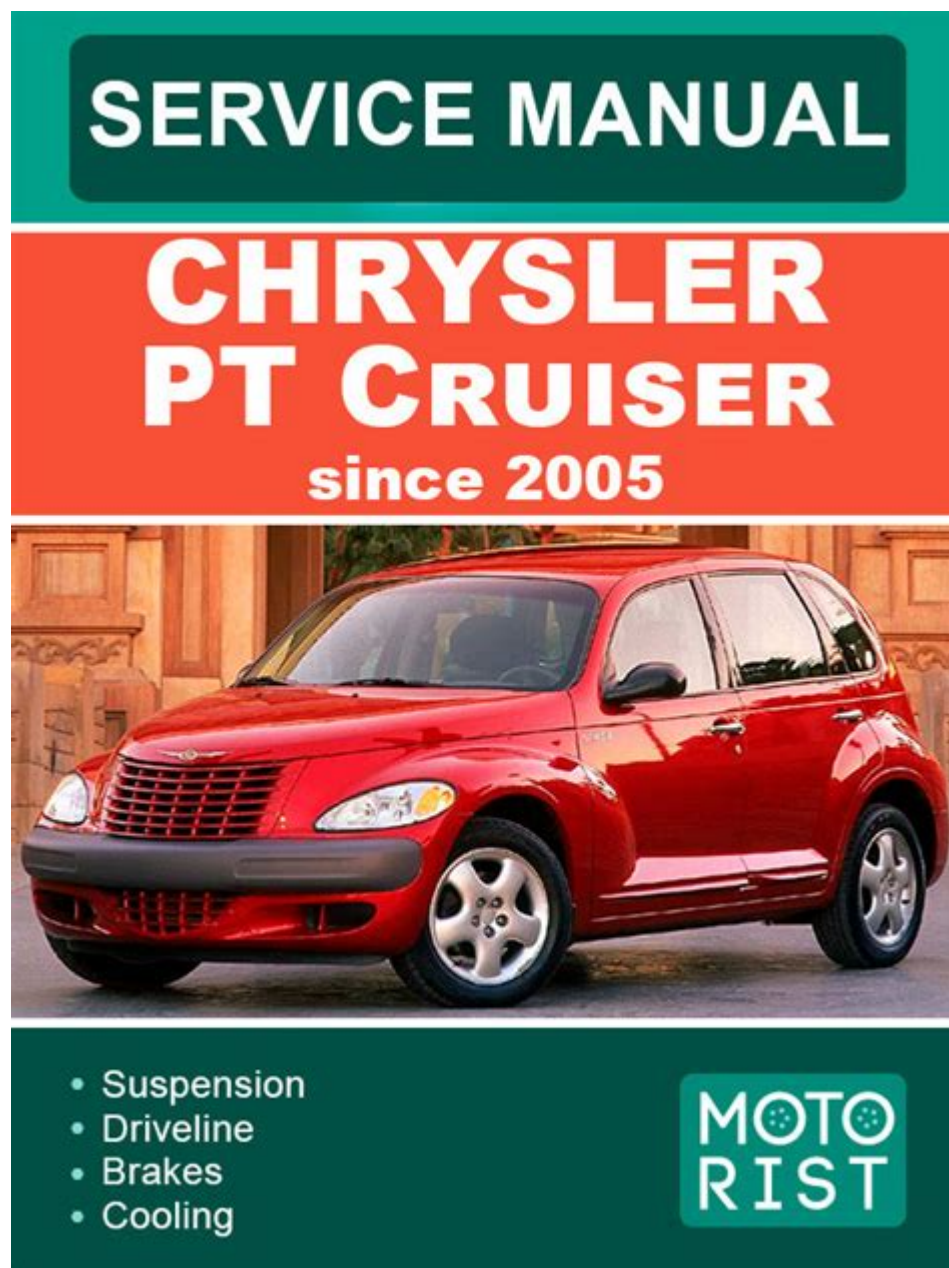


Pt Cruiser 2003 Owner Manual



PT Cruiser 2003 owner manual is an essential resource for anyone who owns or is considering purchasing this unique compact car. The PT Cruiser, produced by Chrysler, has garnered a loyal following due to its distinctive retro styling and versatile interior design. Whether you're a first-time owner or a seasoned enthusiast, understanding the features and operations of your PT Cruiser is crucial. In this article, we will explore the contents of the 2003 owner manual, provide tips for maintenance, and highlight some common issues and solutions.

Overview of the PT Cruiser 2003

The 2003 PT Cruiser stands out for its combination of style and functionality. It is equipped with a 2.4-liter inline-four engine, providing

a balance of power and efficiency. The model comes in various trims, including the base model, GT, and Limited Edition, each offering unique features and options.

Key Features of the 2003 PT Cruiser

- **Distinctive Design:** The PT Cruiser's retro aesthetic is one of its most appealing attributes.
- **Versatile Interior:** The car features a spacious cabin with convertible seating arrangements, making it suitable for both passengers and cargo.
- **Safety Features:** The 2003 model includes standard safety features such as front airbags and anti-lock brakes.

Understanding the Owner Manual

The owner manual for the 2003 PT Cruiser contains valuable information to help you understand your vehicle better. It typically includes the following sections:

1. Vehicle Overview

This section covers the car's basic specifications, including dimensions, engine specifications, and available features. Understanding these can help you appreciate the car's capabilities and limitations.

2. Controls and Instruments

Here, you will find detailed descriptions of the dashboard controls, instrument panel, and various features, such as:

- Headlights and Wipers
- Climate Control System
- Audio System Controls

Familiarizing yourself with these controls can enhance your driving experience.

3. Maintenance Guidelines

Regular maintenance is vital for the longevity of your PT Cruiser. The owner manual provides a maintenance schedule that includes:

- **Oil Changes:** Recommended intervals and oil specifications.
- **Tire Maintenance:** Tire pressure recommendations and rotation schedules.
- **Fluid Checks:** Information on checking and replacing fluids (brake, coolant, transmission).

4. Troubleshooting Common Issues

Every vehicle can encounter issues from time to time. The owner manual typically includes a troubleshooting guide for common problems such as:

- Engine Won't Start: Possible causes and solutions.
- Warning Lights: What different dashboard warning lights mean and how to address them.
- Electrical Issues: Common electrical problems and potential fixes.

Maintaining Your PT Cruiser

Proper maintenance can help prevent many issues and extend the life of your vehicle. Here are some essential maintenance tips based on the 2003 owner manual:

1. Regular Oil Changes

Changing the oil regularly is crucial for engine health. The manual recommends changing the oil every 3,000 to 5,000 miles, depending on driving conditions. Always use the recommended oil type for optimal performance.

2. Tire Care

Maintaining proper tire pressure and rotating your tires every 6,000 to 8,000 miles can significantly enhance your PT Cruiser's handling and fuel efficiency. Regularly inspect your tires for wear and alignment issues.

3. Brake System Maintenance

Brakes are one of the most critical safety features in any vehicle. The owner manual suggests checking the brake pads and fluid regularly. Look out for signs of wear, such as squeaking or reduced responsiveness.

4. Battery Maintenance

Keep your battery terminals clean and check the battery charge regularly, especially if your vehicle experiences starting issues. The manual provides guidance on how to jump-start the battery if necessary.

Common Issues and Solutions

While the PT Cruiser is generally reliable, like any vehicle, it may experience some common issues. Here are a few problems that owners might encounter, along with suggested solutions:

1. Electrical Problems

Some owners report intermittent electrical issues, such as malfunctioning power windows or dashboard lights.

- Solution: Check fuses and connections; replace any blown fuses and ensure all electrical connections are secure.

2. Transmission Issues

Transmission problems can manifest as rough shifting or slipping.

- Solution: Regularly check the transmission fluid level and quality. If issues persist, a professional inspection may be necessary.

3. Overheating

Overheating can occur due to low coolant levels or a faulty thermostat.

- Solution: Regularly check coolant levels and refill as needed. If the problem continues, have the cooling system inspected.

Conclusion

The **PT Cruiser 2003 owner manual** serves as an invaluable guide for all aspects of owning and maintaining this unique vehicle. By understanding the features, adhering to maintenance schedules, and recognizing common issues, owners can ensure a long and enjoyable experience with their PT Cruiser. Always consult the owner manual for specific guidance and follow best practices to keep your vehicle running smoothly. Whether you're cruising around the city or embarking on a road trip, your PT Cruiser is designed to provide comfort and style every step of the way.

Frequently Asked Questions

What is the recommended oil type for a 2003 PT Cruiser?

The recommended oil type for a 2003 PT Cruiser is 5W-30 for optimal performance.

Where can I find the fuse box location in a 2003 PT Cruiser?

The fuse box for the 2003 PT Cruiser is located under the dashboard on the driver's side, near the steering column.

What are the tire pressure specifications for the 2003 PT Cruiser?

The recommended tire pressure for the 2003 PT Cruiser is 32 PSI for front and rear tires.

How do I reset the check engine light on a 2003 PT Cruiser?

To reset the check engine light, disconnect the negative battery cable for about 15 minutes, then reconnect it.

What type of transmission fluid is used in the 2003 PT Cruiser?

The 2003 PT Cruiser uses ATF+4 automatic transmission fluid.

How often should I change the air filter in a 2003 PT Cruiser?

It is recommended to change the air filter in a 2003 PT Cruiser every 15,000 to 30,000 miles, depending on driving conditions.

What is the procedure to replace windshield wipers on a 2003 PT Cruiser?

To replace windshield wipers, lift the wiper arm away from the windshield, press the tab on the wiper blade, and slide the blade off. Then attach the new blade by sliding it on until it clicks.

What is the maximum towing capacity of a 2003 PT Cruiser?

The maximum towing capacity of a 2003 PT Cruiser is approximately 2,000 pounds when properly equipped.

How do I change the cabin air filter in a 2003 PT Cruiser?

To change the cabin air filter, remove the glove compartment, locate the filter cover, and replace the old filter with a new one.

What are common issues with the 2003 PT Cruiser that I should be aware of?

Common issues with the 2003 PT Cruiser include electrical problems, coolant leaks, and engine performance issues, particularly with the turbocharged models.

Find other PDF article:

<https://soc.up.edu.ph/37-lead/files?dataid=fAa06-6444&title=lego-star-wars-the-phantom-menace.pdf>

Pt Cruiser 2003 Owner Manual

□□□□□□□□ - □□

pizza hut

□□□□pizza□□□ - □□

Feb 21, 2019 · [\[REDACTED\]](#): [REDACTED] [REDACTED]
[REDACTED] ...

blue frog Pizza Express -

Jan 25, 2015 · [\[redacted\] Pizza Express](#)
[redacted] pizza [redacted] ...

□□□□□□□□□□□□ pizza □□□□□□□□□□□□ ...

pizza ? 41

12 pizza 72 ...

12 pizza 72

□□□□□□□□□□□□□□ - □□

9pizza24001/6400167460kg20%

spaghetti lasagna pasta -

pasta[] [] "[]"

...

□□□□□□□□□□ - □□

`pizza pizza` `#####pizza 2.` `#####` `#####pizza pizza###`
`##### ...`

□□□□□□□□□□ - □□

.....
R18...3d.....2010.....3d.....

□□□□□pizza□□□□□□□□ - □□

`"pizza"` pizza 12 pizza
288 ...

The Joint Distribution of Value and Profitability: International Evidence

Jan 1, 2020 · This study develops new evidence on risk versus mispricing explanations of the well-known profitability premium. First, we examine whether exposure to expected downside ...

Combining Value and Profitability Factors: the International Evidence

Jun 10, 2021 · In their November 2020 study, “ The Joint Distribution of Value and Profitability: International Evidence, ” Wahal and Repetto expanded their research to include international ...

International Differences in Profitability* - Bloch - 2024 - Economic ...

Oct 10, 2023 · We examine the global distribution of company profitability over the 30 years from

1989 to 2018 focusing on the international dimension. We find the international component of ...

The Joint Distribution of Value and Profitability: International Evidence

The Joint Distribution of Value and Profitability: International Evidence Standort Klicken Sie hier, um den Inhalt der Registerkarte zu laden.

Organization capital, dividends and firm value: International evidence

Dec 1, 2024 · This table presents the distribution of firm-year observations in our sample as well as the average values of dividend payouts (DIV) and organization capital (OrgCapPT) across ...

Equilibrium Value and Profitability Premiums - Hengjie Ai

We show that our model can not only distinguish the profitability factor from the value factor but also account for the co-existence of the value and profitability premium.

Size, value, profitability, and investment: Evidence from emerging ...

Sep 1, 2018 · We find little evidence of value, profitability, and some investment effects. Local factors perform better than US and global factors. In this study, we investigate how the Fama ...

Causality between corporate diversification and profitability: evidence ...

Feb 2, 2015 · Prior empirical studies on the relationship between corporate diversification and firm performance have not considered data stationarity and have devoted little consideration to the ...

Profitability and royalty rates across industries: Some ... - KPMG

Abstract Is the licensing market efficient such that royalty rates reflect costs and profitability across industries? This paper tries to answer the question through exploring the relationship between ...

in Stock Returns, The Value Premium, and the Profitability ... - FLVC

Profitability Premium: International Evidence by Benjamin A. Jansen A Dissertation Submitted to the Faculty of College of Business

"Explore the comprehensive 2003 PT Cruiser owner manual for essential tips and maintenance advice. Discover how to get the most from your vehicle today!"

[Back to Home](#)