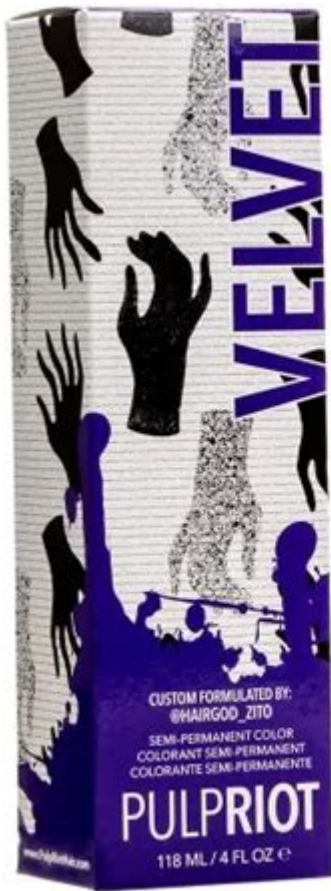


# Pulp Riot Semi Permanent Instructions



## Understanding Pulp Riot Semi-Permanent Hair Color

**Pulp Riot semi-permanent instructions** are essential for anyone looking to achieve vibrant, long-lasting hair color without the commitment of permanent dyes. Pulp Riot has gained a reputation for its bold and innovative hair color products, making it a favorite among hairstylists and individuals alike. This article will guide you through the process of using Pulp Riot semi-permanent hair color, including preparation, application, and aftercare to ensure the best results.

## What is Pulp Riot Semi-Permanent Hair Color?

Pulp Riot semi-permanent hair color is a vegan and cruelty-free product designed to deliver rich, vibrant colors that can last up to 30 washes.

Unlike traditional permanent dyes, semi-permanent colors do not contain ammonia or harsh chemicals, making them ideal for those who want to change their hair color frequently without damaging their hair. Pulp Riot offers a wide range of shades, including pastels, bold colors, and even neon hues, which can be mixed to create custom colors.

## **Preparation for Application**

Before applying Pulp Riot semi-permanent hair color, proper preparation is crucial to achieve the desired results. Here are the steps to prepare your hair:

### **1. Choose the Right Shade**

- Consider your base hair color: The results will vary depending on whether your hair is light, medium, or dark.
- Look at the color wheel: Determine complementary colors to choose shades that will enhance your natural color.
- Mix colors: If you're feeling adventurous, mixing two or more colors can create a unique shade.

### **2. Prepare Your Hair**

1. Start with clean, dry hair. Wash your hair with a clarifying shampoo to remove any product buildup.
2. Do not condition your hair before coloring, as this can hinder color absorption.
3. Perform a strand test to see how your hair reacts to the dye and to check the level of vibrancy.

### **3. Gather Your Supplies**

Before you begin, ensure you have the following supplies:

- Pulp Riot semi-permanent hair color
- Gloves
- Applicator brush
- Mixing bowl
- Plastic wrap or shower cap
- Towel (to protect your clothes)
- Old shirt (to avoid staining your clothing)

## Application Process

Once you have prepared your hair and gathered your supplies, it's time to apply the Pulp Riot semi-permanent hair color. Follow these steps for optimal results:

### 1. Section Your Hair

Divide your hair into manageable sections. Use clips to secure each section, starting from the back and working your way to the front. This will ensure even application and help you cover all areas thoroughly.

### 2. Apply the Color

1. Put on your gloves to protect your hands from staining.
2. Using the applicator brush, start applying the color from the roots to the ends of your hair. Be generous with the product to ensure even coverage.
3. Continue applying the color to each section, ensuring you saturate the hair thoroughly.
4. Once all sections are covered, massage the color into your hair to enhance absorption.

### **3. Process the Color**

After applying the color, cover your hair with plastic wrap or a shower cap to keep the warmth in, which helps the color develop. The processing time can vary based on the desired intensity:

- For pastel shades: 20-30 minutes
- For vibrant shades: 30-40 minutes

### **4. Rinse and Condition**

Once the processing time is complete, rinse your hair with cool water to help seal the color. Avoid using shampoo during this initial rinse. After rinsing, apply a color-safe conditioner to hydrate your hair, then rinse again.

## **Aftercare Tips**

To maintain the vibrancy of your Pulp Riot semi-permanent hair color, follow these aftercare tips:

### **1. Use Color-Safe Products**

Invest in shampoos and conditioners specifically formulated for color-treated hair. These products are designed to be gentle and help preserve the vibrancy of your color.

### **2. Limit Washing Frequency**

- Try to wash your hair less frequently, as washing can strip color from your hair.
- When you do wash your hair, use cool water to help seal the cuticle and retain color.

### **3. Avoid Heat Styling**

Minimize the use of heat styling tools, such as blow dryers, straighteners, and curling irons, as they can cause color to fade more quickly. If you must use heat, apply a heat protectant spray to shield your hair.

### **4. Protect Your Hair from the Sun**

UV rays can fade hair color, so consider wearing a hat or using UV-protective hair products when spending extended periods in the sun.

## **Common Issues and Solutions**

While applying Pulp Riot semi-permanent hair color is generally straightforward, some individuals may encounter common issues. Here are solutions to potential problems:

### **1. Uneven Color**

If you notice uneven coloring, it may be due to insufficient saturation or uneven application. Ensure that you thoroughly cover each section and massage the color into your hair.

### **2. Stains on Skin or Clothing**

To prevent staining, apply a barrier cream around your hairline before coloring. If stains occur, immediately wash the area with soap and water. For clothing, act quickly to rinse the stain with cold water.

### **3. Color Fading Too Quickly**

If your color fades faster than expected, consider evaluating your aftercare routine. Ensure you're using color-safe products, washing your hair less often, and avoiding heat styling.

# Conclusion

Pulp Riot semi-permanent hair color offers a fantastic opportunity to express your individuality through vibrant hair colors. By following the proper instructions for preparation, application, and aftercare, you can achieve stunning results that last. Remember to have fun experimenting with different shades and combinations, and enjoy the creative journey of coloring your hair!

## Frequently Asked Questions

### **What is Pulp Riot semi-permanent hair color?**

Pulp Riot semi-permanent hair color is a vibrant, fashion-forward hair dye that is free of ammonia and PPD, providing bold colors that last for several weeks.

### **How long should I leave Pulp Riot semi-permanent color on my hair?**

For optimal results, leave Pulp Riot semi-permanent color on your hair for 20-40 minutes, depending on the desired intensity of the color.

### **Can I mix different Pulp Riot semi-permanent colors?**

Yes, you can mix different Pulp Riot semi-permanent colors to create custom shades and achieve unique looks.

### **Do I need to pre-lighten my hair before using Pulp Riot semi-permanent color?**

Yes, for the best results with vibrant shades, it's recommended to pre-lighten your hair to a light blonde level.

### **Is Pulp Riot semi-permanent hair color suitable for all hair types?**

Pulp Riot semi-permanent hair color is suitable for most hair types, but results may vary based on the hair's porosity and previous treatments.

### **How do I prepare my hair before applying Pulp Riot semi-permanent color?**

Before applying Pulp Riot, wash your hair with a clarifying shampoo to remove any product buildup, then towel dry it to ensure it's damp but not dripping.

# How should I care for my hair after using Pulp Riot semi-permanent color?

To maintain the vibrancy of your color, use sulfate-free shampoos and conditioners, and avoid excessive heat styling.

# How can I remove Pulp Riot semi-permanent color if I want to change my hair color?

To remove Pulp Riot semi-permanent color, you can use a clarifying shampoo or a color remover specifically designed for semi-permanent dyes.

Find other PDF article:

<https://soc.up.edu.ph/35-bold/pdf?ID=UuE81-3790&title=john-steinbeck-grapes-of-wrath.pdf>

## Pulp Riot Semi Permanent Instructions

How to use Pulp Riot Blur, Oasis, Suede

Pulp Riot Blur, Oasis, Suede is a semi-permanent hair color that is designed to be used on hair that has been bleached or lightened. It is a water-based formula that is easy to apply and washes out easily. It is available in a variety of shades, including blonde, brown, and red.

Pulp Riot -

Pulp Riot is a hair color brand that was founded in 1978. It is known for its vibrant, semi-permanent hair colors. The brand's founder, Jarvis Cocker, is a member of the band Pulp.

Pulp Riot -

Apr 15, 2025 · Pulp Riot is a hair color brand that was founded in 1978. It is known for its vibrant, semi-permanent hair colors. The brand's founder, Jarvis Cocker, is a member of the band Pulp.

CIL/CIP -

CIP (Carbon In Pulp) is a process used in the food and beverage industry to remove impurities from liquids. It involves passing the liquid through a bed of activated carbon, which adsorbs the impurities.

Pulp Riot -

Pulp Riot is a hair color brand that was founded in 1978. It is known for its vibrant, semi-permanent hair colors. The brand's founder, Jarvis Cocker, is a member of the band Pulp.

Pulp Riot -

Pulp Riot is a hair color brand that was founded in 1978. It is known for its vibrant, semi-permanent hair colors. The brand's founder, Jarvis Cocker, is a member of the band Pulp.

Pulp Riot -

Pulp Riot is a hair color brand that was founded in 1978. It is known for its vibrant, semi-permanent hair colors. The brand's founder, Jarvis Cocker, is a member of the band Pulp.

Pulp Riot -

