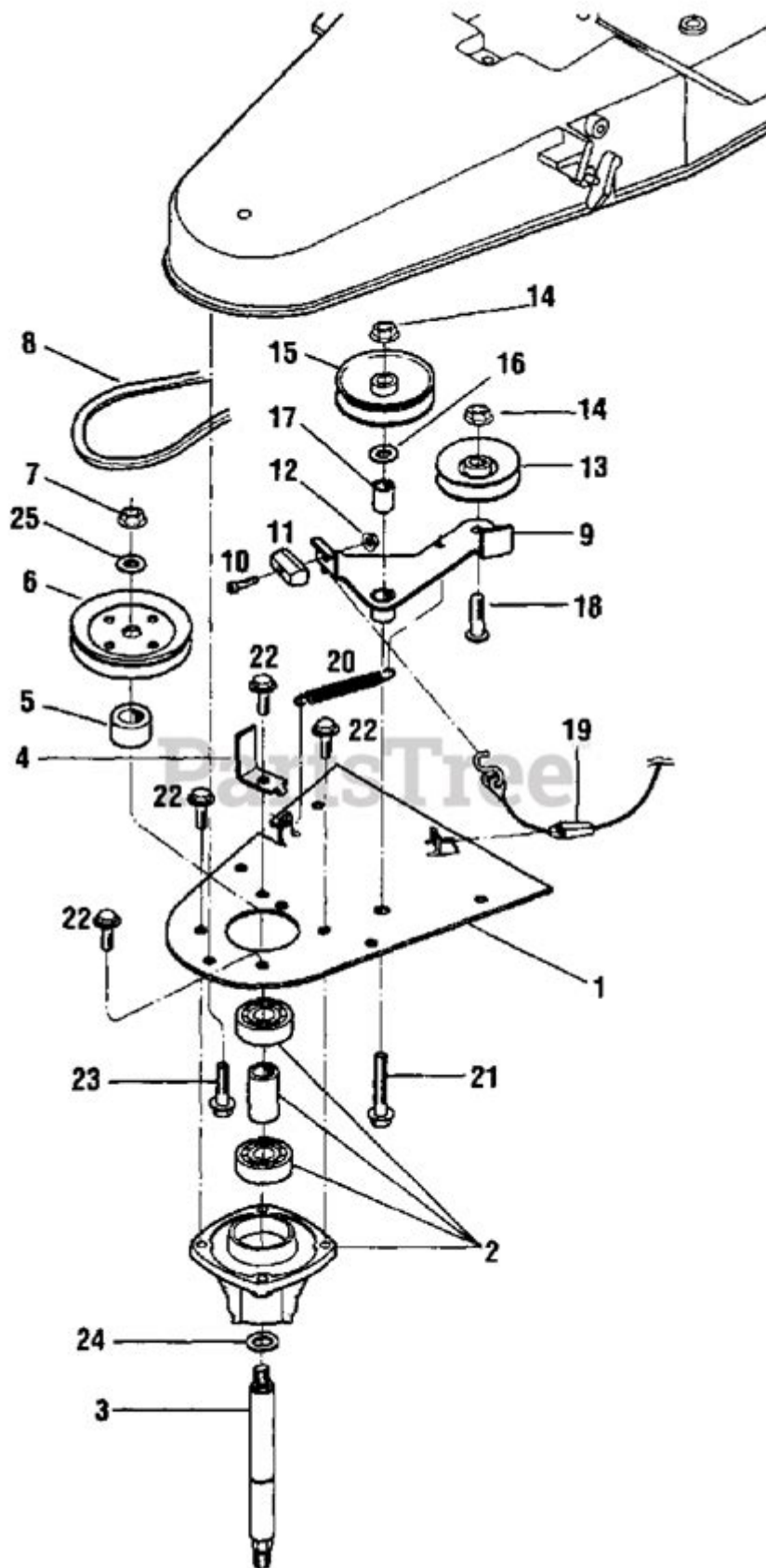


# **Pulsar Walk Behind String Trimmer Parts Diagram**



**Pulsar walk behind string trimmer parts diagram** is an essential tool for maintaining your lawn and garden. Understanding the parts of this machine can greatly enhance your ability to troubleshoot, repair, and maintain it effectively. This article will provide a detailed overview of the key components of a Pulsar

walk behind string trimmer, as well as a diagram to help visualize these parts.

## Understanding the Pulsar Walk Behind String Trimmer

The Pulsar walk behind string trimmer is designed to make lawn care easier, especially for larger areas where a traditional handheld trimmer might be insufficient. This machine combines the power of a lawn mower with the versatility of a string trimmer, allowing users to tackle tough weeds and overgrowth with ease.

### Benefits of Using a Walk Behind String Trimmer

1. **Efficiency:** The walk behind design allows for faster trimming of large areas compared to handheld models.
2. **Versatility:** Can be used for various tasks, including edging, trimming, and clearing overgrown vegetation.
3. **Stability:** Provides better stability and control, reducing operator fatigue over extended use.
4. **Power:** Typically comes with a more powerful engine than handheld trimmers, making it suitable for tougher jobs.

## Key Components of the Pulsar Walk Behind String Trimmer

Understanding the various parts of the Pulsar walk behind string trimmer is crucial for effective operation and maintenance. Below is a breakdown of the essential components:

### 1. Engine

The engine is the powerhouse of the trimmer. Typically, Pulsar trimmers are equipped with either a gas or electric engine. It is important to regularly check the engine oil and replace the air filter as needed to ensure optimal performance.

### 2. Trimmer Head

The trimmer head is where the cutting line is housed. This component is responsible for the actual cutting action. It can be replaced or adjusted depending on the cutting needs.

### **3. Cutting Line**

The cutting line is a nylon string that spins at high speeds to cut through grass and weeds. Various thicknesses and types of cutting line are available, and choosing the right one can affect the performance of the trimmer.

### **4. Drive Shaft**

The drive shaft connects the engine to the trimmer head, transferring power from the engine to the cutting line. Regular inspections are necessary to ensure it is in good condition and free of wear or damage.

### **5. Handlebar**

The handlebar provides the user with control over the trimmer. It often features adjustable heights for comfort, and some models include ergonomic grips for better handling.

### **6. Wheels**

The wheels allow for easy movement of the trimmer across various terrains. Larger wheels can enhance maneuverability, especially in uneven or rough areas.

### **7. Chassis**

The chassis is the frame of the trimmer, providing stability and support for all other components. A sturdy chassis contributes to the overall durability of the trimmer.

### **8. Fuel Tank**

For gas-powered models, the fuel tank holds the gasoline needed to operate the engine. Ensuring that the fuel tank is clean and free of debris is essential for smooth operation.

### **9. Safety Features**

Safety features may include a kill switch, blade guard, and other protective components to prevent accidents during operation. Familiarizing yourself with these features is crucial for safe use.

# Pulsar Walk Behind String Trimmer Parts Diagram

A parts diagram can be an invaluable resource for understanding the layout and function of each component in a Pulsar walk behind string trimmer. Below, we provide a simplified representation of the parts.

- Engine
- Trimmer Head
- Cutting Line
- Drive Shaft
- Handlebar
- Wheels
- Chassis
- Fuel Tank
- Safety Features

While this text format does not provide a visual diagram, users can typically find detailed parts diagrams in the user manual or on the manufacturer's website. These diagrams will label each part clearly, making it easier to identify components during maintenance or repair.

## Maintenance Tips for Pulsar Walk Behind String Trimmer

Regular maintenance is crucial for ensuring the longevity of your Pulsar walk behind string trimmer. Here are some essential maintenance tips:

1. **Check the Oil:** Regularly inspect the engine oil level and change it according to the manufacturer's recommendations.
2. **Inspect the Cutting Line:** Replace the cutting line when it becomes worn or breaks. Keep extra spools on hand for convenience.
3. **Clean the Air Filter:** A clean air filter can improve engine efficiency. Clean or replace it as needed.
4. **Sharpen the Blades:** If your trimmer has blades, ensure they are sharp for efficient cutting.
5. **Examine the Wheels:** Check the wheels for wear and ensure they spin freely.
6. **Inspect the Drive Shaft:** Look for any signs of wear or damage and replace if necessary.

7. **Check Fuel Quality:** Use fresh fuel and store it properly to avoid issues with the engine.

## Troubleshooting Common Issues

Even with regular maintenance, issues can arise. Here are some common problems and potential solutions:

### 1. Engine Won't Start

- Check the fuel level and ensure you are using fresh gasoline.
- Inspect the spark plug for wear and replace it if necessary.
- Ensure that the kill switch is in the "on" position.

### 2. Cutting Line Breaks Frequently

- Ensure you are using the correct gauge of cutting line for your trimmer.
- Inspect the trimmer head for damage or debris that might be causing excessive wear.

### 3. Uneven Cutting

- Check the height of the cutting line and adjust as needed.
- Inspect the wheels to ensure they are functioning properly.

### 4. Excessive Vibration

- Check the drive shaft and trimmer head for any loose or damaged parts.
- Ensure that the cutting line is evenly wound on the spool.

## Conclusion

Understanding the **Pulsar walk behind string trimmer parts diagram** and the various components of this machine is essential for effective operation and maintenance. From the engine to the cutting line, each part plays a crucial role in ensuring that your lawn care tasks are completed efficiently. Regular maintenance and troubleshooting can prevent many common issues, allowing you to enjoy a well-manicured lawn all season long. Whether you're a seasoned gardener or a novice, familiarizing yourself with your trimmer will only enhance your gardening experience.

# Frequently Asked Questions

## What is a pulsar walk behind string trimmer used for?

A pulsar walk behind string trimmer is primarily used for cutting grass, weeds, and overgrown vegetation, making it ideal for maintaining lawns and garden edges.

## Where can I find a parts diagram for a pulsar walk behind string trimmer?

You can find a parts diagram for a pulsar walk behind string trimmer on the manufacturer's official website, in the user manual, or through online parts retailers.

## What are the main components included in the parts diagram of a pulsar string trimmer?

The main components typically include the engine, cutting head, trimmer line, wheels, handle, frame, and various fasteners and belts.

## How do I interpret the parts diagram for maintenance?

To interpret the parts diagram, identify each component labeled in the diagram, compare them with the physical parts of your trimmer, and follow the maintenance or assembly instructions as indicated.

## What should I do if I can't find a specific part in the diagram?

If you can't find a specific part in the diagram, consult the parts list that accompanies the diagram, or contact customer support for assistance.

## Are there common replacement parts that I should keep on hand?

Yes, common replacement parts include trimmer line, air filters, spark plugs, and wheels, as these are often subject to wear and tear.

## How do I order parts using the parts diagram?

To order parts, identify the part number from the diagram, and use it to search on the manufacturer's website or a parts distributor to find and purchase the item.

## What tools do I need for replacing parts on a pulsar walk behind string trimmer?

You typically need basic tools such as a wrench set, screwdrivers, and pliers for replacing parts on a pulsar walk behind string trimmer.

# Can I use aftermarket parts with my pulsar walk behind string trimmer?

Yes, you can use aftermarket parts, but it's essential to ensure they are compatible and of high quality to maintain performance and safety.

Find other PDF article:

<https://soc.up.edu.ph/10-plan/Book?ID=PnP68-8406&title=business-writing-and-communication-skills.pdf>

## Pulsar Walk Behind String Trimmer Parts Diagram

Apache Pulsar: Overview - PDF

Apache Pulsar is a distributed streaming platform that provides a unified architecture for real-time data processing. It is designed to be highly scalable, reliable, and easy to use. The platform is built on the Apache Kafka ecosystem and is compatible with the same tools and integrations. It is a great choice for organizations looking for a modern, cloud-native data platform. The Apache Pulsar 2010 release is a significant milestone in the platform's history, as it introduces a number of new features and improvements that make it even more powerful and flexible. The Apache Pulsar 2010 release is available for download from the Apache website.

Apache Pulsar - Overview

Pulsar is a distributed streaming platform that provides a unified architecture for real-time data processing. It is designed to be highly scalable, reliable, and easy to use. The platform is built on the Apache Kafka ecosystem and is compatible with the same tools and integrations. It is a great choice for organizations looking for a modern, cloud-native data platform. The Apache Pulsar 2013 release is a significant milestone in the platform's history, as it introduces a number of new features and improvements that make it even more powerful and flexible. The Apache Pulsar 2017 release is a significant milestone in the platform's history, as it introduces a number of new features and improvements that make it even more powerful and flexible. The Apache Pulsar 2017 release is available for download from the Apache website.

Pulsar (pulsar timing array) Overview - PDF

Pulsar (pulsar timing array) is a distributed streaming platform that provides a unified architecture for real-time data processing. It is designed to be highly scalable, reliable, and easy to use. The platform is built on the Apache Kafka ecosystem and is compatible with the same tools and integrations. It is a great choice for organizations looking for a modern, cloud-native data platform. The Apache Pulsar naive pulsar timing array is a significant milestone in the platform's history, as it introduces a number of new features and improvements that make it even more powerful and flexible. The Apache Pulsar naive pulsar timing array is available for download from the Apache website.

Pulsar X2 Overview - PDF

Jun 11, 2023 · Pulsar X2 is a distributed streaming platform that provides a unified architecture for real-time data processing. It is designed to be highly scalable, reliable, and easy to use. The platform is built on the Apache Kafka ecosystem and is compatible with the same tools and integrations. It is a great choice for organizations looking for a modern, cloud-native data platform. The Apache Pulsar X2 2023-06-11 05:44 release is a significant milestone in the platform's history, as it introduces a number of new features and improvements that make it even more powerful and flexible. The Apache Pulsar X2 2023-06-11 05:44 release is available for download from the Apache website.

LAMZU Pulsar X2 X2 mini Overview - PDF

LAMZU Pulsar X2 X2 mini is a distributed streaming platform that provides a unified architecture for real-time data processing. It is designed to be highly scalable, reliable, and easy to use. The platform is built on the Apache Kafka ecosystem and is compatible with the same tools and integrations. It is a great choice for organizations looking for a modern, cloud-native data platform. The Apache Pulsar X2 X2 mini 3399 release is a significant milestone in the platform's history, as it introduces a number of new features and improvements that make it even more powerful and flexible. The Apache Pulsar X2 X2 mini 3399 release is available for download from the Apache website.

RabbitMQ Overview - PDF

RabbitMQ is a distributed streaming platform that provides a unified architecture for real-time data processing. It is designed to be highly scalable, reliable, and easy to use. The platform is built on the Apache Kafka ecosystem and is compatible with the same tools and integrations. It is a great choice for organizations looking for a modern, cloud-native data platform. The Apache Pulsar kafka MQ release is a significant milestone in the platform's history, as it introduces a number of new features and improvements that make it even more powerful and flexible. The Apache Pulsar kafka MQ release is available for download from the Apache website.

Kafka topic Overview - PDF

Oct 26, 2018 · Kafka is a distributed streaming platform that provides a unified architecture for real-time data processing. It is designed to be highly scalable, reliable, and easy to use. The platform is built on the Apache Kafka ecosystem and is compatible with the same tools and integrations. It is a great choice for organizations looking for a modern, cloud-native data platform. The Apache Pulsar kafka broker partition rebalance is a significant milestone in the platform's history, as it introduces a number of new features and improvements that make it even more powerful and flexible. The Apache Pulsar kafka broker partition rebalance is available for download from the Apache website.

Q4 Overview - PDF

2022 Q4 is a distributed streaming platform that provides a unified architecture for real-time data processing. It is designed to be highly scalable, reliable, and easy to use. The platform is built on the Apache Kafka ecosystem and is compatible with the same tools and integrations. It is a great choice for organizations looking for a modern, cloud-native data platform. The Apache Pulsar Q4 2023 release is a significant milestone in the platform's history, as it introduces a number of new features and improvements that make it even more powerful and flexible. The Apache Pulsar Q4 2023 release is available for download from the Apache website.

(HAMILTON) Overview ...

Jun 18, 2025 · Hamilton is a distributed streaming platform that provides a unified architecture for real-time data processing. It is designed to be highly scalable, reliable, and easy to use. The platform is built on the Apache Kafka ecosystem and is compatible with the same tools and integrations. It is a great choice for organizations looking for a modern, cloud-native data platform. The Apache Pulsar Hamilton 1892 release is a significant milestone in the platform's history, as it introduces a number of new features and improvements that make it even more powerful and flexible. The Apache Pulsar Hamilton 1892 release is available for download from the Apache website.

2025 Overview ...



Feb 13, 2025 · ROG Strix G7600 Gaming Laptop

---

## Apache Pulsar: Overview - 1

[illegible]

# Apache Pulsar -

Pulsar 2013 2017

**□□□□□ (pulsar timing array) □□□□□□□□□□ - □□**

naive (pulsar timing array) naive pulsar timing array ...

# Пульт дистанционного управленияPulsar X2 - инструкция

Jun 11, 2023 · 中国电科Pulsar X2中国电科 2023-06-11 05:44 中国 · 541 中国 中国 中国 ...

□□□□□*LAMZU*□□□□□□□□ - □□

□□□□□□□□ Pulsar □ X2 □ X2 mini□ □□Lamzu□□□□□□□□□□□□□□□□□□□□mini□□□□□□□□ ...

Explore the Pulsar walk behind string trimmer parts diagram to enhance your maintenance skills. Learn more about each component and keep your trimmer running smoothly!

[Back to Home](#)