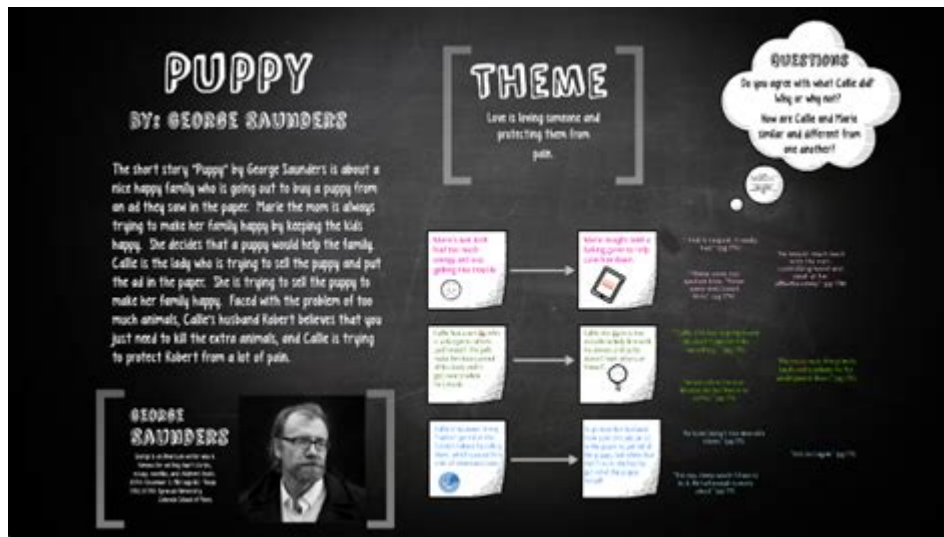


# Puppy George Saunders Analysis



## Puppy George Saunders Analysis

George Saunders' short story "Puppy," first published in The New Yorker in 2007 and later included in his collection "Tenth of December," presents a poignant exploration of morality, empathy, and the complexities of modern parenting. The narrative juxtaposes two families and their differing views on the treatment of animals, ultimately raising questions about human nature, societal norms, and the ethical dilemmas we face in our daily lives. This analysis delves into the key themes, character dynamics, and stylistic elements that make "Puppy" a compelling and thought-provoking piece of literature.

## Overview of the Narrative Structure

"Puppy" is structured through alternating perspectives, primarily focusing on two mothers: Marie and Callie. Marie, a middle-class woman, is visiting a rural property owned by her friend, while Callie is a working-class woman who runs a small farm. The story unfolds in a non-linear fashion, enhancing the tension between the two families and their contrasting lifestyles.

## Characterization

The characterization in "Puppy" is intricate and layered, providing insights into the motivations and backgrounds of the protagonists.

- Marie: She is portrayed as a loving mother, but her life is marked by privilege and a certain detachment from the realities faced by lower-income families. Her obsession with material comforts and a sanitized

lifestyle manifests in her desire to control her children's experiences. Marie's visit to Callie's home is driven by a superficial curiosity, which eventually leads her to judge Callie's parenting style harshly.

- Callie: In stark contrast, Callie embodies resilience and practicality. She works hard to provide for her children but is often overwhelmed by her circumstances. Her parenting style is rooted in a sense of survival, which leads her to adopt a more hands-off approach. This difference in her relationship with her children is highlighted throughout the story, particularly in her interactions with the puppy.

- The Children: The children in the story, especially Marie's son, are significant in highlighting the themes of innocence and moral development. They serve as a bridge between their mothers' conflicting ideologies, revealing how the environment and upbringing shape their perceptions of right and wrong.

## Thematic Exploration

At its core, "Puppy" grapples with several interrelated themes, including moral ambiguity, empathy, and the consequences of our choices.

### Moral Ambiguity

One of the most striking aspects of "Puppy" is its exploration of moral ambiguity. Both Marie and Callie make decisions that could be interpreted as right or wrong, depending on one's perspective.

- Marie's Judgment: Marie's initial visit to Callie's house leads her to judge Callie's treatment of her animals and children. She views Callie's lifestyle as crude and lacking in the compassion she deems necessary for proper parenting. However, her own parenting decisions—such as the way she seeks to control her child's experiences—raise questions about her moral superiority.

- Callie's Practicality: Callie's pragmatic approach to life reflects her struggle to make ends meet. Her decision to keep a puppy in a less-than-ideal environment may seem cruel, but it stems from a place of necessity rather than malice. This complexity forces readers to reconsider what constitutes "good" or "bad" parenting.

### Empathy and Connection

Empathy is another critical theme in "Puppy." The story urges readers to consider the emotional connections between characters and the impact of their choices on others.

- The Puppy as a Symbol: The puppy in the story serves as a symbol of innocence and vulnerability. It

represents the potential for love and companionship but also the harsh realities of life for both families. The puppy's fate becomes a focal point for the characters' emotional struggles and moral decisions.

- **Interpersonal Relationships:** The interactions between Marie and Callie reveal a lack of understanding and empathy. Marie's inability to see beyond her privilege blinds her to the challenges Callie faces. Conversely, Callie's harshness is a defensive mechanism born from her difficult circumstances. Their inability to connect on a deeper level ultimately leads to tragic consequences.

## **Stylistic Elements**

Saunders employs various stylistic techniques that enhance the emotional weight of the story and deepen its themes.

### **Point of View**

The use of third-person limited narration allows readers to access the inner thoughts and feelings of both Marie and Callie. This technique creates a sense of intimacy while maintaining a critical distance, forcing readers to grapple with the characters' conflicting emotions and moral dilemmas.

### **Imagery and Symbolism**

Saunders' use of vivid imagery and symbolism is integral to the narrative.

- **Descriptive Settings:** The contrasting environments of Marie's suburban life and Callie's rural property highlight their differing values and priorities. The descriptions of the puppy's living conditions evoke a sense of discomfort, prompting readers to confront the stark realities of life for animals in less privileged settings.

- **Symbolism of the Puppy:** The puppy symbolizes both innocence and the potential for love. Its treatment becomes a reflection of the characters' moral standings and the societal pressures they navigate. The puppy's fate ultimately serves as a critique of how compassion can be overshadowed by societal judgments.

## **Conclusion**

In "Puppy," George Saunders masterfully weaves a narrative that challenges readers to confront their own beliefs about morality, empathy, and the complexities of human relationships. The juxtaposition of Marie

and Callie's lives serves as a microcosm for broader societal issues, inviting reflection on the choices we make and their consequences. Through rich characterization, thematic depth, and stylistic finesse, Saunders creates a compelling story that resonates long after the final page is turned. "Puppy" is not just a tale about a dog; it is an exploration of what it means to be human in a world fraught with moral ambiguity and emotional complexity.

## **Frequently Asked Questions**

### **What are the main themes explored in George Saunders' 'Puppy'?**

The main themes in 'Puppy' include the complexities of parenting, the clash of social classes, and the moral dilemmas faced in everyday life. The story navigates the tension between love and control, as well as the contrasting values of different families.

### **How does George Saunders use character development in 'Puppy'?**

Saunders employs nuanced character development to showcase the internal conflicts and motivations of his characters. The contrasting perspectives of the two families highlight their differing values and the impact of their backgrounds on their decisions.

### **What narrative techniques does Saunders use in 'Puppy'?**

Saunders utilizes a third-person limited perspective that shifts between characters, allowing readers to gain insight into each character's thoughts and feelings. This technique enhances the emotional depth of the story and emphasizes the complexity of human relationships.

### **How does 'Puppy' reflect societal issues?**

The story reflects societal issues such as class disparity and the varying definitions of success and happiness. Through the characters' interactions and decisions, Saunders critiques societal norms and highlights the struggles of different socioeconomic backgrounds.

### **What role does the puppy play in the story?**

The puppy serves as a symbol of innocence and the desire for companionship. It catalyzes the moral conflict between the characters, representing both love and the potential for possession, thereby amplifying the narrative's exploration of parental instincts and ethical boundaries.

### **What is the significance of the ending of 'Puppy'?**

The ending of 'Puppy' leaves readers with a sense of unresolved tension, encouraging them to contemplate the consequences of the characters' choices. It highlights the ambiguity of morality and the complexity of human emotions, prompting discussions about right and wrong.

# How does George Saunders convey humor in 'Puppy'?

Saunders infuses humor throughout 'Puppy' by juxtaposing serious themes with absurd situations and witty dialogue. This blend of humor and pathos creates a unique reading experience, allowing for moments of levity amidst the story's darker undertones.

Find other PDF article:

<https://soc.up.edu.ph/54-tone/Book?trackid=fRp70-9656&title=snoopy-facts-fun-about-houses.pdf>

## Puppy George Saunders Analysis

dog puppy -   
 nine dog   
 puppy ...

**puppy. dog**   
 puppy dog 1 puppy 2 dog 1 puppy 2 dog   
 1 puppy Puppy ...

dog puppy   
 dog puppy "Dog"

puppy?   
 May 26, 2024 · Puppy "puppy" ...

puppy daddy -   
 Aug 22, 2024 · puppy daddy "puppy" "daddy"   
 2022

Puppy Linux | Linux   
 Puppy Linux Linux Puppy Linux

"puppy love"   
 Puppy love 0ic-30

"DDLG"? -   
 ...

puppy -   
 puppy puppy 19   
 puppy love ...

**Puppy (How to install Puppy) | Puppy Linux ...**

Oct 3, 2008 · Puppy Linux Windows 7, windows pup2usb puppy Ubuntu (frugal) pup2usb ...

dog puppy -   
 nine nine dog   
 puppy ...

```
puppy. dog _
puppy dog 1 puppy 2 dog 1 puppy 2 dog
1 puppy Puppy ...
```

dog puppy  
dog puppy "Dog"

[illegible]

**puppydaddy** -  
Aug 22, 2024 · puppydaddy "puppy"daddy """"  
©2022

Puppy Linux | Linux  
 Puppy Linux Linux Puppy Linux

**"puppy love"** ...  
Puppy love

“DDLG”是什么意思? - 问题  
 问题者: 匿名  
 回答者: 匿名  
 回答者: 匿名 ...

**puppy** - puppy  
puppy, puppy 19  
puppy love ...

[Puppy Linux](#) | [Puppy Linux](#) ...  
Oct 3, 2008 · [Puppy Linux](#) [Windows](#) [pup2usb](#) [puppy](#) [U](#) [\(frugal\)](#) [pup2usb](#) ...

## Dive into our in-depth 'Puppy' George Saunders analysis

[Back to Home](#)