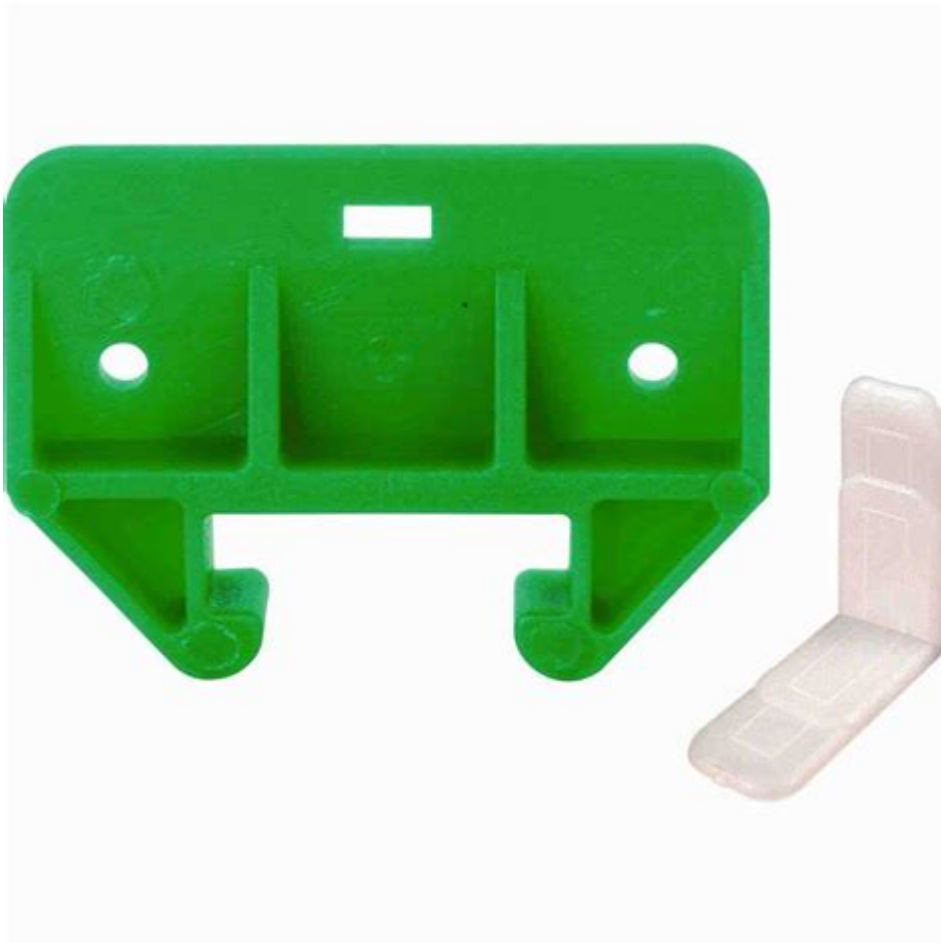


# Prime Line Drawer Track Guide



**Prime line drawer track guide** is an essential component in the world of furniture and cabinetry. It ensures the smooth operation of drawers, providing a seamless experience when opening and closing. This article delves into what a prime line drawer track guide is, its importance, types, installation processes, and maintenance tips to ensure longevity and functionality.

## Understanding the Prime Line Drawer Track Guide

A prime line drawer track guide is a mechanism designed to assist in the smooth movement of drawers within cabinets or furniture. It is typically made from durable materials such as metal or plastic and plays a critical role in maintaining the stability and alignment of drawers. Without a proper track guide, drawers can become misaligned, making them difficult to operate.

## Why Are Drawer Track Guides Important?

The significance of a drawer track guide can be summarized in several key points:

1. **Smooth Operation:** The primary function of a track guide is to ensure that drawers glide in and out smoothly. This is especially important in high-traffic areas where drawers are frequently used.
2. **Stability:** A well-installed guide helps keep the drawer in place, preventing it from wobbling or tipping when opened, which could lead to spills or accidents.
3. **Durability:** Quality track guides are built to withstand repetitive use, ensuring the longevity of both the drawer and the furniture itself.
4. **Noise Reduction:** Properly functioning drawer guides minimize noise when drawers are opened or closed, contributing to a quieter environment.
5. **Aesthetic Appeal:** Well-aligned drawers contribute to the overall appearance of furniture, making it look more organized and appealing.

## **Types of Prime Line Drawer Track Guides**

There are several types of drawer track guides, each designed for specific applications and preferences. Understanding these can help you choose the right one for your needs.

### **1. Side-Mount Guides**

Side-mount guides are the most common type of drawer track guides. They are installed on the sides of the drawer and the cabinet. Benefits include:

- Easy installation
- Wide variety of styles and sizes
- Suitable for most drawer types

### **2. Bottom-Mount Guides**

Bottom-mount guides are installed beneath the drawer. They are ideal for drawers that need to be hidden from view when closed. Features include:

- Enhanced aesthetics
- Increased drawer space since they do not take up side space
- Smooth operation

### **3. Center-Mount Guides**

These guides are positioned in the center of the drawer, typically using a single track. They offer:

- Simplified installation
- A clean look with fewer visible components
- Good support for lightweight drawers

### **4. Ball-Bearing Slides**

Ball-bearing slides use small balls to reduce friction, allowing for a smoother glide. These are popular for heavier drawers and provide:

- Superior durability
- Low noise operation
- High weight capacity

## **Installation Process for Prime Line Drawer Track Guides**

Installing a prime line drawer track guide can be a straightforward process if you follow the correct steps. Here's a step-by-step guide:

### **Materials Needed**

- Drawer track guide kit
- Screwdriver (Phillips or flathead as needed)
- Measuring tape
- Level
- Pencil for marking
- Drill (if pre-drilling is necessary)

### **Step-by-Step Installation**

1. Remove the Drawer: Start by pulling the drawer out of the cabinet. If it's stuck, check for any screws or clips that may be holding it in place.
2. Remove Existing Track Guides: If replacing old guides, unscrew or unclip them from the drawer and the cabinet.
3. Measure and Mark: Use a measuring tape to determine the correct height for

the new track guides. Mark the spots for the screws with a pencil.

4. Install the Track Guides:

- For side-mount guides, position them against the sides of the drawer and cabinet.
- For bottom-mount guides, attach them to the bottom of the drawer.
- If using ball-bearing slides, ensure they are aligned properly for optimal performance.

5. Secure the Guides: Use screws to secure the guides in place. Ensure they are tight but be cautious not to overtighten, as this can damage the track.

6. Reinsert the Drawer: Slide the drawer back into the cabinet, ensuring that it aligns properly with the new guides.

7. Test the Drawer: Open and close the drawer several times to ensure it operates smoothly and quietly.

## Maintenance Tips for Drawer Track Guides

To prolong the life of your prime line drawer track guides and ensure optimal performance, consider the following maintenance tips:

- **Regular Cleaning:** Dust and debris can accumulate in the tracks, hindering smooth operation. Regularly clean the tracks with a damp cloth.
- **Lubrication:** Apply a silicone-based lubricant to the tracks to reduce friction and prevent squeaking.
- **Check for Damage:** Regularly inspect the guides for any signs of wear or damage. Replace any broken parts promptly.
- **Weight Limit Awareness:** Be mindful of the weight each drawer is intended to hold. Overloading can lead to malfunction.
- **Alignment Checks:** Occasionally check that the drawers remain aligned and adjust the guides if necessary.

## Conclusion

In summary, the prime line drawer track guide is a crucial element in ensuring that drawers function smoothly and efficiently. By understanding the different types available, the installation process, and maintenance

requirements, you can enhance the functionality and longevity of your furniture. Whether you are a DIY enthusiast or a professional, mastering the art of drawer track installation and maintenance will ensure that your drawers continue to serve you well for years to come.

## **Frequently Asked Questions**

### **What is a prime line drawer track guide?**

A prime line drawer track guide is a component used in the sliding mechanism of drawers, helping to align and stabilize the drawer as it opens and closes.

### **How do I install a prime line drawer track guide?**

To install a prime line drawer track guide, remove the drawer, attach the guide to the side of the drawer or the cabinet using screws, and ensure it aligns with the track for smooth operation.

### **What materials are prime line drawer track guides made from?**

Prime line drawer track guides are typically made from durable materials such as plastic or metal, ensuring longevity and resistance to wear and tear.

### **Can I replace my old drawer track guide with a prime line model?**

Yes, you can replace your old drawer track guide with a prime line model, provided the dimensions and installation method are compatible with your existing drawer system.

### **What are the signs that my drawer track guide needs replacing?**

Signs that your drawer track guide needs replacing include difficulty in opening or closing the drawer, visible damage or wear on the guide, and unusual noises during operation.

### **Where can I buy prime line drawer track guides?**

Prime line drawer track guides can be purchased at home improvement stores, hardware stores, or online through retailers like Amazon and specialized hardware websites.

### **Are prime line drawer track guides adjustable?**

Many prime line drawer track guides are adjustable, allowing for fine-tuning of the drawer alignment to ensure smooth operation and prevent binding.

<https://soc.up.edu.ph/35-bold/files?ID=ASP70-5985&title=kaiser-permanente-hormone-replacement-therapy.pdf>

**Prime Prime -**

