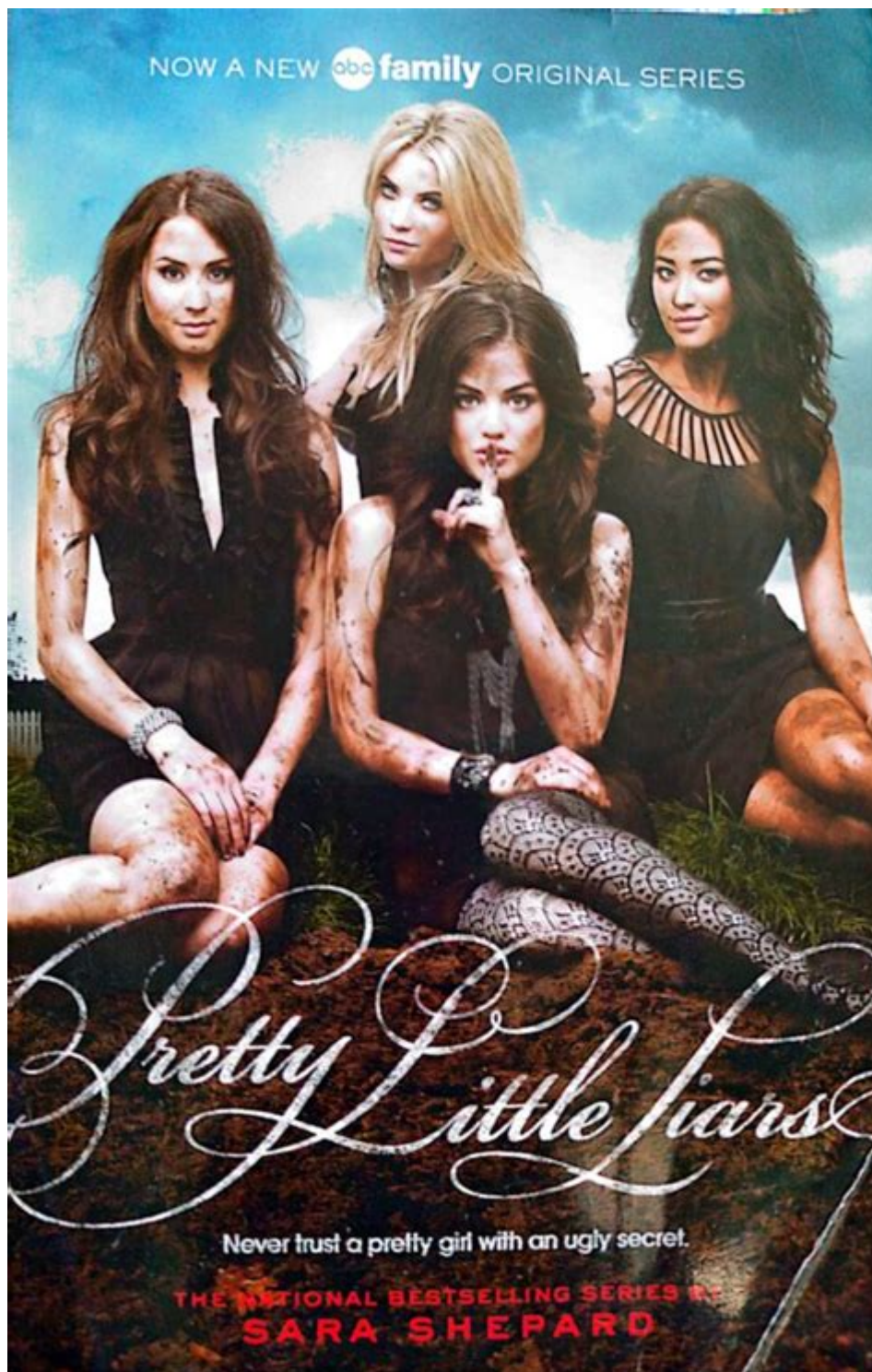


Pretty Little Liars By Sara Shepard



Pretty Little Liars is a captivating young adult series written by Sara Shepard that has garnered a massive following since its debut in 2006. The series, which consists of 16 books, intertwines mystery, drama, and the complexities of teenage life, all while keeping readers on the edge of their seats. With its intricate plotlines, complex characters, and thrilling twists, Pretty Little Liars has not only become a staple in contemporary literature but has also inspired a successful television adaptation, ensuring its place in popular culture. This article delves into the key elements that make Pretty Little Liars a standout series, exploring its themes, characters, and cultural impact.

Overview of the Series

Pretty Little Liars follows the lives of four high school girls—Aria Montgomery, Emily Fields, Hanna Marin, and Spencer Hastings—who find themselves intertwined in a web of secrets and lies after the mysterious disappearance of their friend Alison DiLaurentis. The series is set in the fictional town of Rosewood, Pennsylvania, and begins with the return of Alison, who seemingly holds the key to unraveling the mysteries surrounding her disappearance.

Plot Structure

The plot of Pretty Little Liars is characterized by its suspenseful storytelling and the gradual revelation of secrets. Each book introduces new twists and turns, creating a sense of urgency and intrigue. The central mystery revolves around the girls receiving anonymous messages from a figure known only as "A," who threatens to expose their deepest secrets.

- Key Elements of the Plot:

1. The Mystery of Alison's Disappearance: The story begins with Alison's sudden disappearance, setting the stage for the subsequent events.
2. The Role of "A": The anonymous antagonist serves as a catalyst for the girls' struggles, pushing them to confront their pasts.
3. Character Development: Each book explores the growth of the protagonists as they navigate the challenges presented by "A" and their own personal dilemmas.
4. Climactic Revelations: The series is filled with cliffhangers and shocking revelations, keeping readers engaged throughout its run.

Character Analysis

The strength of Pretty Little Liars lies in its well-developed characters, each representing different aspects of teenage life. The protagonists face various challenges, from personal insecurities to complex relationships, resonating with readers on multiple levels.

The Four Liars

1. Aria Montgomery: Aria is the artistic and free-spirited member of the group. She struggles with her identity and relationships, particularly her complex romance with her teacher, Ezra Fitz. Her character often represents themes of individuality and self-discovery.
2. Emily Fields: Emily is the athletic and loyal friend who grapples with her sexuality throughout the series. Her journey of acceptance and love reflects the challenges faced by LGBTQ+ youth, making her a relatable figure for many readers.
3. Hanna Marin: Initially portrayed as the popular girl, Hanna's character evolves as she confronts issues of self-worth and body image. Her transformation from a superficial character to a deeper, more complex individual is a significant theme in the series.

4. Spencer Hastings: The overachiever of the group, Spencer is driven and ambitious, but often faces pressure from her family. Her storyline often delves into themes of mental health and the impact of familial expectations.

Supporting Characters

- Alison DiLaurentis: The enigmatic queen bee whose disappearance sparks the central mystery of the series. Her character is pivotal, as her influence continues to affect the lives of the other girls even after her absence.

- Toby Cavanaugh: A misunderstood outcast who becomes a crucial ally for Spencer. His character adds depth to the narrative, showcasing themes of acceptance and the complexities of teenage relationships.

- Mona Vanderwaal: Initially a supporting character, Mona's role expands significantly throughout the series. Her transformation from a geeky outsider to a key player in the mystery adds layers to the story.

Thematic Exploration

Pretty Little Liars explores several significant themes that resonate deeply with its young adult audience. These themes not only enhance the narrative but also offer valuable insights into the challenges faced by teenagers.

Friendship and Betrayal

At its core, Pretty Little Liars is a story about friendship. The bond between the four girls is tested repeatedly as they face external threats and internal conflicts. Betrayals, both real and perceived, force the characters to confront their loyalty and trust in one another.

- Key Aspects:
- The impact of secrets on friendships.
- The struggle to maintain relationships under pressure.
- The importance of forgiveness and understanding.

Identity and Self-Discovery

The series delves into the journey of self-discovery for its characters. Each girl grapples with her identity, whether it be through romantic relationships, social status, or personal struggles.

- Key Elements:
- Aria's exploration of her artistic side.
- Emily's journey to accept her sexuality.

- Hanna's battle with body image and self-worth.
- Spencer's quest for academic success and familial approval.

The Consequences of Secrets

One of the most prominent themes in *Pretty Little Liars* is the consequences of keeping secrets. The characters' lives are deeply affected by the secrets they hide, leading to a cycle of deceit and mistrust.

- Key Points:
- How secrets can create isolation.
- The impact of lies on relationships.
- The eventual necessity of confronting the truth.

Cultural Impact and Legacy

Since its inception, *Pretty Little Liars* has made a significant impact on both literature and television. The series has cultivated a dedicated fanbase and has influenced a generation of readers and viewers.

Television Adaptation

The success of the book series led to the creation of a television adaptation that premiered on ABC Family (now Freeform) in 2010. The show expanded the universe of *Pretty Little Liars*, introducing new characters and storylines while remaining true to the original narrative.

- Key Highlights:
- The show ran for seven seasons, becoming a cultural phenomenon.
- It provided a platform for discussions about teen issues, including mental health, identity, and relationships.
- The series has spawned spin-offs, such as *Pretty Little Liars: The Perfectionists* and *Pretty Little Liars: Original Sin*, further extending its legacy.

Influence on Young Adult Literature

Pretty Little Liars has set a precedent in the young adult genre, paving the way for other series that blend mystery, drama, and romance. Its success has encouraged authors to explore similar themes, leading to the emergence of a subgenre focused on suspenseful teenage dramas.

- Key Contributions:
- The series encourages readers to engage with complex characters and moral dilemmas.
- It has sparked discussions about relevant social issues among its audience.
- The blend of mystery and relatable teenage experiences continues to inspire new works.

Conclusion

In conclusion, *Pretty Little Liars* by Sara Shepard stands as a remarkable testament to the power of storytelling in young adult literature. Through its compelling characters, intricate plotlines, and exploration of significant themes, the series has captivated readers and viewers alike. The legacy of *Pretty Little Liars* endures, inspiring discussions about friendship, identity, and the consequences of secrets, making it a relevant and relatable series for generations to come. Whether through the original books or their adaptation in television, the essence of *Pretty Little Liars* continues to resonate, reminding us of the complexities of adolescence and the importance of trust in our relationships.

Frequently Asked Questions

What is the central mystery in 'Pretty Little Liars'?

The central mystery revolves around the disappearance of Alison DiLaurentis and the subsequent torment of her friends by an anonymous figure known as 'A'.

How do the characters in 'Pretty Little Liars' evolve throughout the series?

The characters undergo significant development as they confront their past secrets, navigate complex relationships, and deal with the psychological impact of being stalked by 'A'.

What themes are prevalent in 'Pretty Little Liars'?

Key themes include friendship, betrayal, the impact of secrets, and the struggle for identity in the face of societal pressures.

How does 'Pretty Little Liars' address the concept of social media?

The series explores the influence of social media on relationships and personal privacy, highlighting how it can both connect and isolate individuals.

What role does deception play in 'Pretty Little Liars'?

Deception is a fundamental element, with characters often hiding their true selves and manipulating situations, leading to a web of lies that complicates their lives.

How does the book series differ from the television adaptation?

While both the book series and TV adaptation share core characters and plotlines, the TV show expands on character backstories, introduces new story arcs, and alters significant plot points, particularly in later seasons.

Find other PDF article:

<https://soc.up.edu.ph/08-print/Book?trackid=PRD37-3803&title=bank-reconciliation-practice-problems-and-solutions.pdf>

Pretty Little Liars By Sara Shepard

PRETTY Definition & Meaning - Merriam-Webster

Pretty is used to tone down a statement and is in wide use across the whole spectrum of English. It is common in informal speech and writing but is neither rare nor wrong in serious discourse

PRETTY | English meaning - Cambridge Dictionary

We can use pretty as an adverb, before an adjective or another adverb, meaning 'quite, but not extremely'. It is informal: ...

PRETTY Definition & Meaning | Dictionary.com

Something or someone that is pretty is pleasing to the eye. But calling someone pretty isn't quite the same as calling them beautiful, handsome, or lovely.

Pretty - definition of pretty by The Free Dictionary

1. To a fair degree; moderately: a pretty good student. 2. In a pretty manner; prettily or pleasingly.

448 Synonyms & Antonyms for PRETTY | Thesaurus.com

Find 448 different ways to say PRETTY, along with antonyms, related words, and example sentences at Thesaurus.com.

PRETTY definition and meaning | Collins English Dictionary

If you describe someone as pretty, you mean that they are attractive. She's a very charming and very pretty girl.

pretty - Wiktionary, the free dictionary

Jul 21, 2025 · When particularly stressed, the adverb pretty serves almost to diminish the adjective or adverb that it modifies, by emphasizing that there are greater levels of intensity.

pretty - WordReference.com Dictionary of English

pleasing or attractive, esp. in a delicate or graceful way: a pretty face. pleasing or charming but not grand or overwhelming: a pretty little cabin in the woods.

What does pretty mean? - Definitions.net

Pretty is an adjective that describes something or someone as visually pleasing, attractive, or aesthetically appealing. It is often used to convey a sense of beauty, charm, elegance, or loveliness.

pretty adjective - Definition, pictures, pronunciation and usage ...

Definition of pretty adjective in Oxford Advanced Learner's Dictionary. Meaning, pronunciation, picture, example sentences, grammar, usage notes, synonyms and more.

PRETTY Definition & Meaning - Merriam-...

Pretty is used to tone down a statement and is in wide use across the whole spectrum ...

PRETTY | English meaning - Cambridg...

We can use pretty as an adverb, before an adjective or another adverb, meaning ...

PRETTY Definition & Meaning | Dictionary....

Something or someone that is pretty is pleasing to the eye. But calling someone pretty ...

Pretty - definition of pretty by The Free Di...

1. To a fair degree; moderately: a pretty good student. 2. In a pretty manner; prettily or ...

448 Synonyms & Antonyms for PRETT...

Find 448 different ways to say PRETTY, along with antonyms, related words, and example ...

Dive into the thrilling world of "Pretty Little Liars" by Sara Shepard. Uncover secrets

[Back to Home](#)