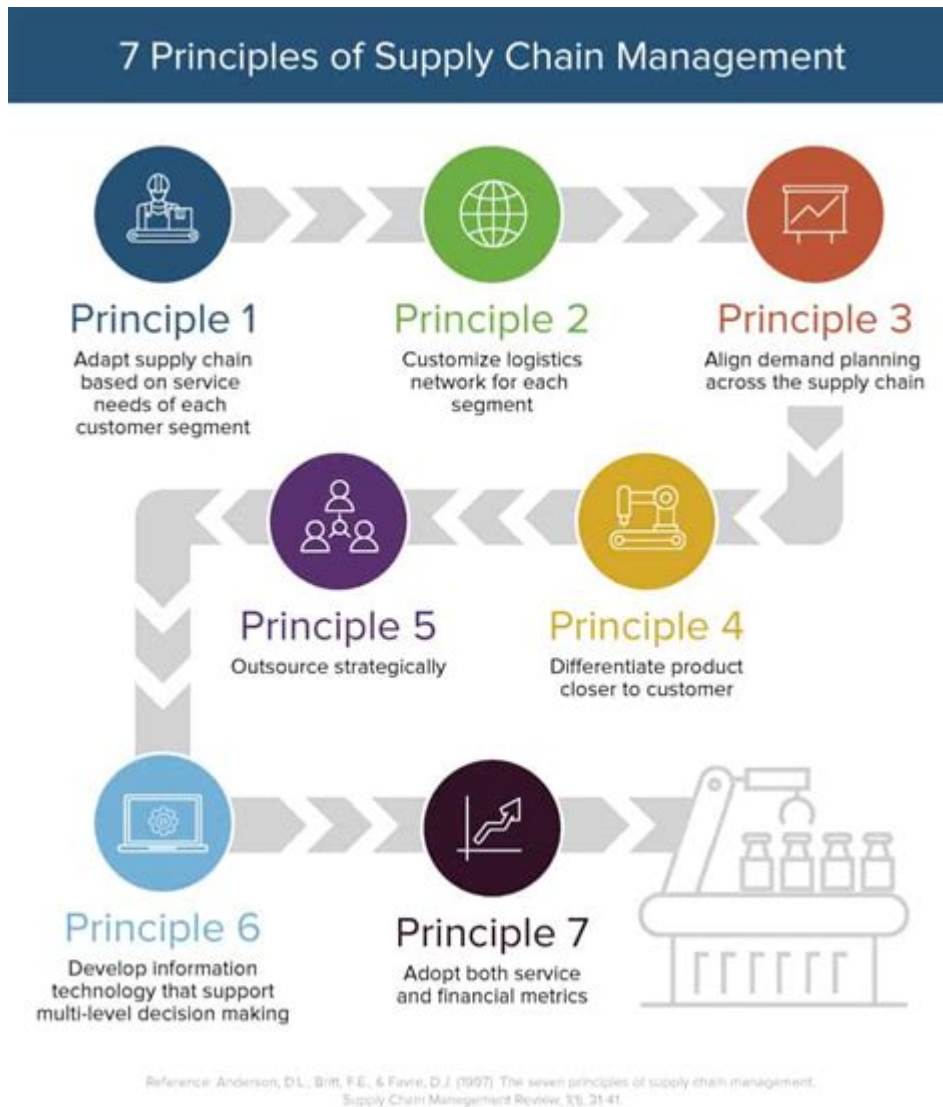


Principles Of Supply Chain Management



Principles of supply chain management are essential for businesses seeking to optimize their operations and enhance customer satisfaction. Supply chain management (SCM) is a complex system that encompasses the flow of goods, information, and finances from the initial supplier to the end consumer. Understanding these principles allows organizations to streamline processes, reduce costs, and improve overall efficiency. In this article, we'll delve into the key principles of supply chain management, the importance of effective SCM, and best practices that organizations can adopt to succeed in today's competitive landscape.

Understanding Supply Chain Management

Supply chain management involves the coordination and management of all activities involved in sourcing, procurement, conversion, and logistics management. The goal is to ensure that products are delivered to consumers in a timely manner while minimizing costs. SCM is not just about logistics; it involves a strategic approach to managing relationships between suppliers, manufacturers, distributors, and customers.

Key Components of Supply Chain Management

To grasp the principles of supply chain management, it's important to understand its key components:

1. **Planning:** This involves forecasting demand, planning inventory levels, and scheduling production.
2. **Sourcing:** Selecting the right suppliers and establishing contracts to procure raw materials.
3. **Manufacturing:** Converting raw materials into finished products through efficient production processes.
4. **Logistics:** The transportation and storage of goods from suppliers to manufacturers and from manufacturers to customers.
5. **Return Management:** Handling the return of products, which includes processing returns and managing defective goods.

Key Principles of Supply Chain Management

The principles of supply chain management can be categorized into several fundamental areas that guide organizations in their SCM efforts.

1. Customer Focus

At the heart of effective supply chain management lies a commitment to customer satisfaction. Organizations should focus on understanding customer needs and preferences to tailor their supply chain processes accordingly.

- **Tailored Solutions:** Businesses must develop products and services that meet specific customer demands.
- **Feedback Mechanism:** Establish channels for customer feedback to continuously improve offerings.

2. Integration and Collaboration

Effective supply chain management relies on the integration of processes across different functions and organizations. Collaboration among stakeholders, including suppliers, manufacturers, and distributors, fosters better communication and efficiency.

- **Cross-Functional Teams:** Form teams that include members from different departments to ensure alignment in objectives.
- **Shared Information:** Utilize technology to share data and insights among partners for informed decision-making.

3. Agility and Flexibility

In today's rapidly changing market, supply chains must be agile and flexible to respond to fluctuations in demand and supply. Organizations should develop strategies to quickly adapt to changing circumstances.

- Responsive Systems: Implement systems that allow for rapid adjustments in production and distribution.
- Scenario Planning: Prepare for various market scenarios to ensure readiness for unexpected changes.

4. Lean Management

The principle of lean management focuses on minimizing waste within the supply chain while maximizing value. This approach encourages organizations to improve efficiency by eliminating non-value-adding activities.

- Value Stream Mapping: Analyze current processes to identify areas for improvement.
- Continuous Improvement: Foster a culture of ongoing enhancement and innovation.

5. Technology Utilization

Technology plays a pivotal role in modern supply chain management. Leveraging advanced technologies can significantly enhance visibility, efficiency, and decision-making.

- Automation: Implement automated systems for inventory management, order processing, and logistics.
- Data Analytics: Use data analytics tools for better forecasting and performance measurement.

6. Risk Management

Supply chains are susceptible to various risks, including natural disasters, economic shifts, and supplier failures. Developing a robust risk management strategy is essential to mitigate potential disruptions.

- Risk Assessment: Regularly assess risks associated with supply chain operations.
- Contingency Planning: Create contingency plans to address possible supply chain disruptions.

The Importance of Supply Chain Management Principles

Implementing the principles of supply chain management can yield numerous benefits for organizations:

- **Cost Reduction:** Streamlining processes can lead to significant cost savings in production, inventory holding, and transportation.
- **Enhanced Customer Satisfaction:** By aligning supply chain activities with customer needs, businesses can improve service levels and build loyalty.
- **Increased Efficiency:** Optimizing supply chain processes reduces lead times and enhances overall operational efficiency.
- **Sustainable Practices:** Effective SCM can lead to more sustainable business practices, reducing waste and promoting environmentally friendly initiatives.

Best Practices for Implementing Supply Chain Management Principles

To effectively implement the principles of supply chain management, organizations should consider the following best practices:

1. **Develop a Clear SCM Strategy:** Establish a comprehensive strategy that aligns with overall business objectives and addresses specific challenges.
2. **Invest in Training and Development:** Educate employees about SCM principles and best practices to foster a culture of continuous improvement.
3. **Utilize Technology to Enhance Visibility:** Invest in supply chain management software that provides real-time visibility into inventory levels, order status, and supplier performance.
4. **Monitor Key Performance Indicators (KPIs):** Measure the performance of supply chain operations using KPIs to identify areas for improvement.
5. **Build Strong Supplier Relationships:** Foster collaborative relationships with suppliers to enhance communication and ensure a reliable supply of materials.

Conclusion

The principles of supply chain management are crucial for organizations aiming to achieve operational excellence and customer satisfaction. By focusing on customer needs, fostering collaboration, embracing technology, and managing risks effectively, businesses can create a resilient and efficient supply chain. As the global marketplace continues to evolve, organizations that adhere to these principles will be better positioned to adapt, thrive, and maintain a competitive edge. Embracing these core principles not only enhances efficiency but also sets the foundation for sustainable growth in an ever-changing business environment.

Frequently Asked Questions

What are the fundamental principles of supply chain management?

The fundamental principles include demand management, inventory management, supplier relationship management, logistics management, and continuous improvement.

How does demand forecasting impact supply chain management?

Demand forecasting helps in predicting customer demand, which allows companies to plan their inventory levels, production schedules, and resource allocation effectively.

What role does technology play in modern supply chain management?

Technology enhances visibility, improves accuracy in inventory management, facilitates real-time tracking, and enables data analytics for better decision-making.

Why is supplier relationship management critical in supply chains?

Effective supplier relationship management fosters collaboration, enhances communication, reduces risks, and can lead to cost savings and improved quality.

How can businesses achieve sustainability in supply chain management?

Businesses can achieve sustainability by optimizing resource use, reducing waste, sourcing ethically, and considering environmental impacts in their supply chain processes.

What is the importance of inventory management in supply chain management?

Inventory management is crucial for balancing supply and demand, minimizing costs, preventing stockouts, and ensuring timely delivery to customers.

How do global supply chains introduce complexity into supply chain management?

Global supply chains involve multiple jurisdictions, cultural differences, varying regulations, and longer lead times, which can complicate logistics and coordination efforts.

What is the bullwhip effect in supply chain management?

The bullwhip effect refers to the phenomenon where small changes in consumer demand lead to larger fluctuations in supply chain orders, resulting in inefficiencies.

How can companies leverage data analytics in supply chain management?

Companies can use data analytics to identify trends, optimize inventory levels, enhance demand forecasting, and improve overall supply chain efficiency and responsiveness.

Find other PDF article:

Principles Of Supply Chain Management

"Too Many Failed attempts" in yahoo email : r/yahoo - Reddit

Jun 30, 2023 · Yahoo is an absolute shitshow Apparently my account is blocked because of too many attempts (repeatedly over the past month), which unless a bot/hacker somewhere is ...

PSA: email log in loop fix for yahoo/att problems : r/yahoo - Reddit

Apr 30, 2022 · I appear to have gotten this. I have an At&t email address and a Yahoo email address. Antytime i try to log into Yahoo mail, it automatically redirects me to AT&T mail.

how much is yahoo premium support before I call? : r/yahoo

Jan 12, 2023 · Hi. Our phone support agents will provide you information about the support subscription. In case they can assist you and you decide to get this subscription, you can ...

Cox moving all email to Yahoo! : r/CoxCommunications - Reddit

The transition to Yahoo Mail will not impact any of your other services with Cox. If you are using your cox.net email address and password for your Cox My Account information, that ...

Display font (NOT default composing font) suddenly changed. : ...

Jul 4, 2023 · A couple weeks ago or so, the default DISPLAY font changed to this, it looks like Impact, or some other condensed bold font. Windows and Firefox...

How do you send high priority emails in yahoo? - Answers

Dec 27, 2024 · In Yahoo Mail, you can send high priority emails by marking them as "High Importance." When composing a new email, click on the three dots in the toolbar at the bottom ...

How can you find out the correct URL of Yahoo Mail? - Answers

Feb 3, 2025 · Can you access Yahoo without using a yahoo.com URL? You could forward your Yahoo mail to another webmail account that you can access (AOL, Gmail, Hotmail and many ...

Your Cox.net email is moving soon to Yahoo Mail - Reddit

Feb 24, 2024 · We wanted to share that your Cox email will soon transition to Yahoo Mail. With this transition, Cox's email service and your cox.net account will move to Yahoo Mail, but you'll ...

How to stop Yahoo login from redirecting to AT&T login on Edge ...

Jun 6, 2024 · My business email is an @ yahoo email. I can access it through login.yahoo.com. For the most part this all works fine, Chrome (both mobile and...

yahoo mail app and one drive for business - Microsoft Community

Created on May 6, 2020 yahoo mail app and one drive for business Good day I am using Yahoo mail app to compose an email and have been trying to attach a file from onedrive (on my ...

QUERY function - Google Docs Editors Help

QUERY function Runs a Google Visualization API Query Language query across data. Sample Usage QUERY(A2:E6,"select avg(A) pivot B") QUERY(A2:E6,F2,FALSE) Syntax ...

Función QUERY - Ayuda de Editores de Documentos de Google

Función QUERY Ejecuta una consulta sobre los datos con el lenguaje de consultas de la API de visualización de Google. Ejemplo de uso QUERY(A2:E6,"select avg(A) pivot B") ...

QUERY - Справка - Редакторы Google Документов

Выполняет запросы на базе языка запросов API визуализации Google. Пример использования QUERY (A2:E6; "select avg (A) pivot B") QUERY (A2:E6; F2; ЛОЖЬ) ...

[video] [GOOGLE SHEETS] FUNCIÓN QUERY: FUNCIONES DE ...

Ver en [GOOGLE SHEETS] FUNCIÓN QUERY: FUNCIONES DE AGREGACIÓN: SUM, AVG, COUNT, MIN y MAX 652 visualizaciones 4 votos a favor

[GOOGLE SHEETS] FUNCIÓN QUERY: USO DE LA CLÁUSULA SELECT

[GOOGLE SHEETS] FUNCIÓN QUERY: USO DE LA CLÁUSULA SELECT Compartir Si la reproducción no empieza en breve, prueba a reiniciar el dispositivo. Los vídeos que veas ...

QUERY - Guida di Editor di documenti Google

QUERY(dati; query; [intestazioni]) dati - L'intervallo di celle su cui eseguire la query. Ogni colonna di dati può contenere solo valori booleani, numerici (inclusi i tipi data/ora) o valori stringa. In ...

Refine searches in Gmail - Computer - Gmail Help - Google Help

Use a search operator On your computer, go to Gmail. At the top, click the search box. Enter a search operator. Tips: After you search, you can use the results to set up a filter for these ...

BigQuery - Google Cloud Platform Console Help

Use a variety of third-party tools to access data on BigQuery, such as tools that load or visualize your data. Use datasets to organize and control access to tables, and construct jobs for ...

Hàm QUERY - Trình chỉnh sửa Google Tài liệu Trợ giúp

Hàm QUERY Chạy truy vấn bằng Ngôn ngữ truy vấn của API Google Visualization trên nhiều dữ liệu. Ví dụ mẫu QUERY(A2:E6;"select avg(A) pivot B") QUERY(A2:E6;F2;FALSE) Cú pháp ...

Set default search engine and site search shortcuts

Enter the web address for the search engine's results page, and use %s where the query would go. To find and edit the web address of the results page: Copy and paste the web address of ...

Discover the essential principles of supply chain management to optimize your business operations. Learn more about key strategies for efficiency and success!

[Back to Home](#)