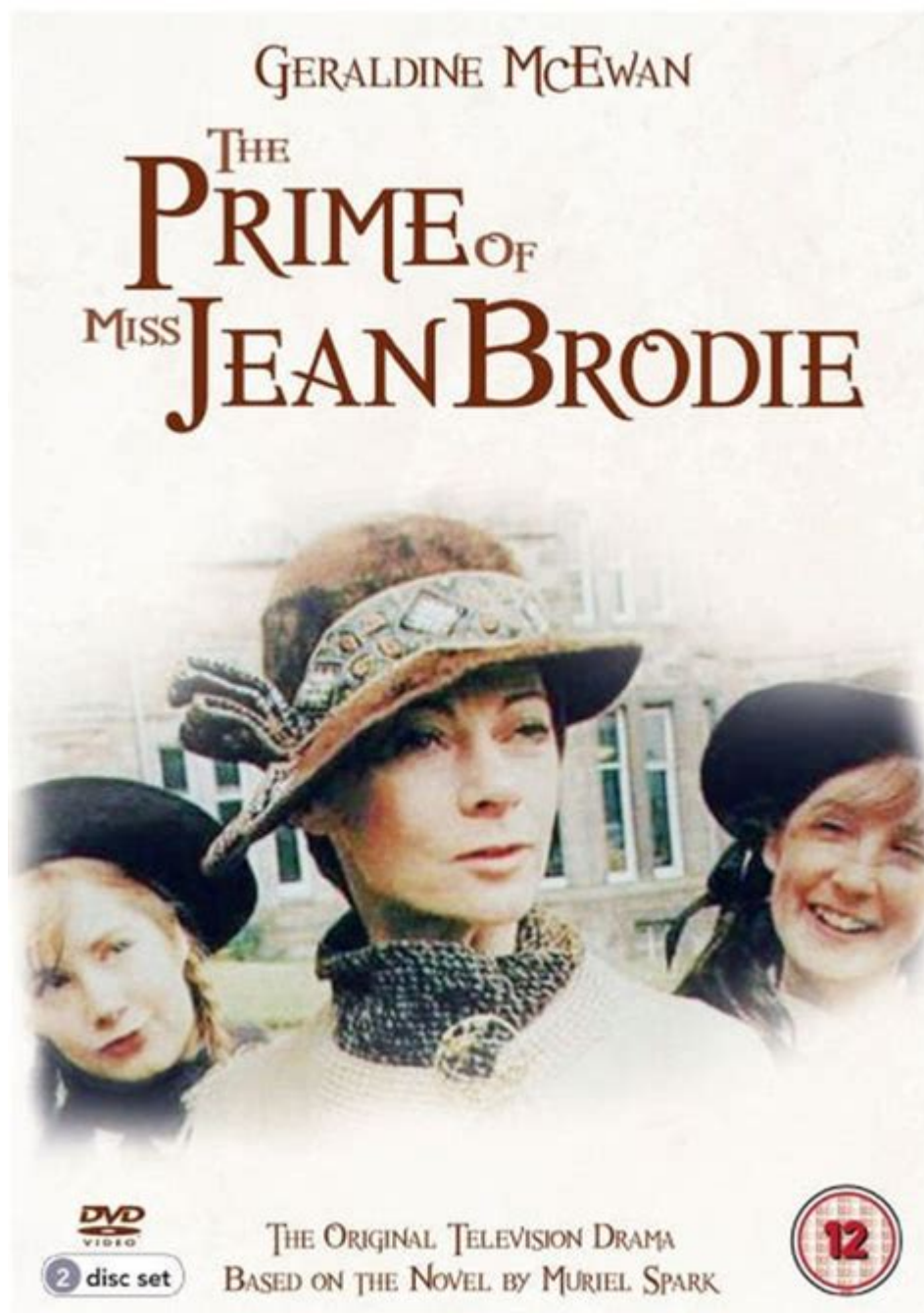


# Prime Of Miss Jean Brodie



**Prime of Miss Jean Brodie** is a novel written by Muriel Spark, first published in 1961. The narrative revolves around an unorthodox teacher, Miss Jean Brodie, and her influence on a group of girls at an all-girls school in Edinburgh during the 1930s. The story intricately explores themes of power, loyalty, and the complexities of education, making it a profound literary piece that has captivated readers for decades. This article will delve into the key elements of the book, its characters, themes, and the impact it has had on literature and society.

# Overview of the Novel

The Prime of Miss Jean Brodie is set in Edinburgh, primarily at the fictional Marcia Blaine School for Girls. The story is narrated from multiple perspectives, primarily focusing on Miss Brodie and her "Brodie set," a group of girls she handpicks to be her special protégés. The narrative structure employs a non-linear timeline, weaving between the past and future, which allows readers to see the consequences of Miss Brodie's actions on her students.

## Plot Summary

Miss Jean Brodie is a charismatic, passionate teacher who believes in a unique approach to education. She prioritizes art, culture, and personal development over traditional academic subjects. Her teaching methods, however, are controversial, leading to tension with the school administration. The plot unfolds through the experiences of the girls in her set:

1. The Brodie Set: The main characters include:
  - Sandy: Intelligent, introspective, and ultimately the most significantly impacted by Miss Brodie's influence.
  - Jenny: Beautiful and flirtatious, she represents the allure of external validation.
  - Monica: Often seen as the less prominent member, her character serves as a foil to the other girls.
  - Rose: The embodiment of physical beauty, often sought after by boys and men.
2. Rivalries and Betrayals: As the girls grow older, their loyalty to Miss Brodie and each other begins to wane. Sandy, in particular, becomes increasingly disillusioned with Miss Brodie's manipulative nature and her attempts to control the girls' lives.
3. Consequences: The tensions culminate in a betrayal that leads to Miss Brodie's downfall, illustrating the dangers of idealism when it is wielded without responsibility.

## Key Themes

The Prime of Miss Jean Brodie is rich in themes that invite readers to reflect on various societal and personal issues. The following are some of the most prominent themes within the novel:

### 1. Power and Manipulation

Miss Brodie exerts a powerful influence over her students, believing herself to be shaping their futures. However, her manipulative tendencies raise questions about the ethical implications of wielding power, especially in an educational context. Through her character, Spark critiques the idea of a teacher as an authoritarian figure, highlighting the potential dangers of emotional and psychological manipulation.

## **2. Individualism vs. Conformity**

Miss Brodie's insistence on cultivating individualism among her students clashes with the school's rigid expectations. She encourages her girls to think for themselves and pursue their passions, but this approach also leads to conflicts and divisions within the group. The tension between individual desires and societal norms is a recurring theme that resonates throughout the narrative.

## **3. Loyalty and Betrayal**

The relationships within the Brodie set exemplify the complexities of loyalty. While the girls initially idolize Miss Brodie, their paths eventually diverge, leading to betrayals that reveal the fragility of their bonds. This theme underscores the idea that loyalty can be conditional, influenced by personal growth and the changing dynamics of relationships.

## **4. The Nature of Education**

Spark's portrayal of education raises critical questions about the role of teachers and the purpose of schooling. Miss Brodie's unorthodox methods challenge traditional educational values, prompting readers to consider what constitutes effective teaching. The novel suggests that education should be about more than rote learning; it should also foster critical thinking and personal development.

## **Character Analysis**

The characters in *The Prime of Miss Jean Brodie* are intricately developed, each representing different aspects of the themes presented in the novel.

### **Miss Jean Brodie**

Miss Brodie is a multifaceted character who embodies both the strengths and weaknesses of passionate teaching. Her charisma initially draws the girls to her, but as the story progresses, her flaws become evident. She is depicted as both a visionary and a tyrant, demonstrating how idealism can lead to destruction. Her inability to recognize the limitations of her influence ultimately results in her isolation and downfall.

### **Sandy Stranger**

Sandy is perhaps the most complex character in the novel. Initially captivated by Miss Brodie's ideology, she eventually becomes disillusioned and recognizes the darker sides of Miss Brodie's influence. Her transformation from a loyal follower to a betrayer illustrates the theme of individual growth and the struggle for autonomy.

## **Jenny and Rose**

Jenny and Rose represent the allure of societal expectations and external validation. Their characters highlight the tension between personal desires and the desire to conform to societal norms, particularly regarding beauty and relationships. Their eventual departure from Miss Brodie's influence signifies a shift towards independence.

## **Literary Impact and Adaptations**

The Prime of Miss Jean Brodie has had a lasting impact on literature and popular culture. It has been studied extensively in academic settings, praised for its innovative narrative style and its exploration of complex themes.

## **Film and Stage Adaptations**

The novel was adapted into a successful film in 1969, starring Maggie Smith as Miss Brodie, a role that earned her an Academy Award for Best Actress. The film captures the essence of the novel while presenting it in a visually compelling manner. Additionally, the story has been adapted for stage productions, further cementing its status as a classic.

## **Influence on Education and Feminism**

The novel's exploration of education, power dynamics, and female relationships has resonated with feminist scholars and educators alike. It raises important questions about the role of women in society, the nature of mentorship, and the complexities of female friendships. As such, it continues to be relevant in discussions surrounding education and gender dynamics.

## **Conclusion**

The Prime of Miss Jean Brodie remains a significant work in modern literature, offering profound insights into the nature of power, individuality, and the complexities of human relationships. Muriel Spark's masterful storytelling and character development invite readers to reflect on the ethical implications of influence and the fragility of loyalty. Through Miss Brodie and her students, Spark challenges conventional notions of education and personal growth, making this novel a timeless exploration of the human experience. Whether studied in academic settings or enjoyed as a work of fiction, The Prime of Miss Jean Brodie continues to captivate and provoke thought, solidifying its place in literary canon.

## **Frequently Asked Questions**

## **What is the central theme of 'The Prime of Miss Jean Brodie'?**

The central theme of 'The Prime of Miss Jean Brodie' revolves around the conflict between individualism and conformity, as Miss Brodie seeks to inspire her students to embrace their own identities while also grappling with the consequences of her influence.

## **Who is the protagonist in 'The Prime of Miss Jean Brodie'?**

The protagonist in 'The Prime of Miss Jean Brodie' is Miss Jean Brodie herself, a charismatic and unconventional teacher who significantly impacts the lives of her students.

## **How does Miss Jean Brodie's teaching style differ from traditional methods?**

Miss Jean Brodie's teaching style is unorthodox and highly personal; she emphasizes experiential learning, encourages independent thought, and often shares her own views and ideals rather than adhering strictly to the curriculum.

## **What role does the setting play in 'The Prime of Miss Jean Brodie'?**

The setting, primarily a girls' school in Edinburgh during the 1930s, plays a crucial role by highlighting the societal expectations of women at the time and providing a backdrop for the clash between Miss Brodie's progressive ideas and the conservative educational environment.

## **What is the significance of the character 'The Brodie Set'?**

The Brodie Set refers to a group of Miss Brodie's most devoted students who are influenced by her teachings and ideals. Their dynamics and eventual betrayal of Miss Brodie illustrate the complexities of loyalty, power, and the impact of mentorship.

## **How does 'The Prime of Miss Jean Brodie' explore the concept of betrayal?**

The novel explores betrayal through the evolving relationships between Miss Brodie and her students, particularly as they grow older and begin to question her influence, leading to pivotal moments that ultimately challenge her authority and ideals.

## **What impact has 'The Prime of Miss Jean Brodie' had on popular culture?**

Since its publication, 'The Prime of Miss Jean Brodie' has had a significant impact on popular culture, inspiring adaptations in film and theater, and influencing discussions about education, feminism, and the complexities of teacher-student relationships.

Find other PDF article:

<https://soc.up.edu.ph/25-style/pdf?ID=gAH38-2533&title=grade-5-assessment-guide-science-florida-answers.pdf>

## Prime Of Miss Jean Brodie

📄 **Prime** 📄📄📄**Prime** 📄📄📄📄 - 📄

📄📄prime📄📄📄📄📄📄📄📄📄📄📄📄📄📄📄📄📄📄📄📄📄📄📄📄“88VIP”📄 📄📄📄prime📄📄📄📄📄📄📄📄 1📄 📄📄📄📄 📄📄📄📄📄📄📄📄 ...

Amazon prime📄📄📄📄📄📄📄📄 - 📄

Amazon prime📄📄📄📄📄📄📄📄📄📄amazon prime📄📄📄📄📄📄📄📄 1.📄📄📄📄📄📄📄📄📄📄📄📄📄📄📄📄📄📄📄📄📄📄📄📄2📄📄📄📄📄📄 ...

📄📄H610M-A📄📄📄H610📄📄📄📄📄📄📄📄

📄📄 H610-A 📄📄📄📄📄📄📄📄📄12📄CPU📄📄📄📄📄📄📄📄📄📄📄📄📄📄📄📄📄📄📄📄📄📄📄📄 H610-A 📄📄📄📄📄📄📄📄📄📄📄📄📄📄📄📄📄📄📄📄 ...

📄📄📄📄📄📄📄📄📄📄📄📄

📄📄📄📄📄📄📄📄M📄MATX📄📄📄📄i📄ITX📄📄📄D4📄DDR4📄📄📄📄📄D5📄DDR5📄📄📄📄R2.0📄📄📄📄📄📄📄📄📄 II📄📄📄📄📄WIFI📄📄 ...

📄📄**B760**📄📄📄|**B760M**📄📄📄📄**B760M-K** ...

📄📄📄 TUF B760M-E 📄📄10+1📄 Dr.Mos📄📄📄4📄📄PRIME  
📄B760M-A📄📄📄 TUF📄 TUF📄📄📄 ...

📄📄**CINITY**📄📄**PRIME**📄📄**IMAX**📄📄📄📄📄 - 📄

Dec 5, 2019 · 📄📄CINITY📄📄PRIME📄📄IMAX📄📄  
📄📄📄 38

**primary,prime,primitive,principle**📄📄📄📄📄? - 📄

📄📄📄 "principal" 📄 "prime" 📄📄  
📄📄📄"📄",prime📄📄📄📄 ...

📄📄**Prime** 📄📄📄📄**prime**📄📄📄📄📄 - 📄

Prime Big Deal Days 📄📄📄📄📄 10📄8📄-9📄📄📄 2📄📄📄📄“📄📄 Prime Day”📄📄📄📄📄📄📄📄📄📄📄📄📄📄📄📄📄  
📄📄📄📄📄📄:Lightning Deals, ...

x' 📄📄📄📄x prime 📄prime📄📄📄📄 - 📄

📄📄📄📄📄📄📄📄 “prime”📄📄📄📄📄20📄📄📄📄x’ 📄📄 x prime ”📄📄📄📄 x 📄📄📄📄“prime 📄📄”📄📄📄📄x’x” (“x  
second”) 📄x” (“x third”) 📄📄📄📄📄prime ...

📄📄**PRIME B660M-K**📄📄📄📄 - 📄

Jul 20, 2024 · 📄📄PRIME B660M-K📄📄  
📄📄📄📄📄

📄📄 **Prime** 📄📄📄📄**Prime** 📄📄📄📄 - 📄

