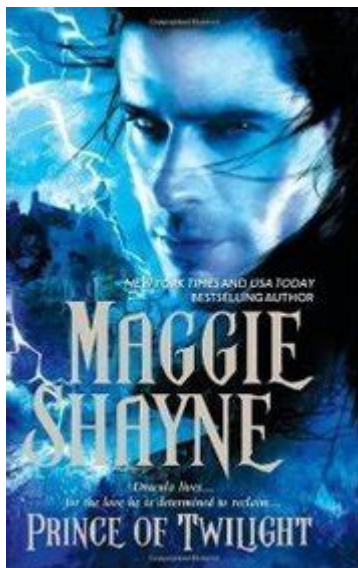


Prince Of Twilight Maggie Shayne



Prince of Twilight by **Maggie Shayne** is a captivating novel that weaves together elements of romance, fantasy, and supernatural intrigue. As a significant entry in the genre of paranormal romance, this book showcases Shayne's ability to create compelling characters and an engrossing plot that keeps readers on the edge of their seats. This article will explore the themes, characters, and settings of "Prince of Twilight," along with its impact on the genre and its popularity among readers.

Overview of the Story

In "Prince of Twilight," Maggie Shayne invites readers into a world where the boundaries between reality and fantasy blur. The story revolves around the life of a vampire prince and the mortal woman who captures his heart. Set against a backdrop of ancient curses, forbidden love, and dark secrets, the novel explores the complexities of love that transcends time and species.

Plot Synopsis

The narrative begins with the introduction of the protagonist, a vampire prince named Damon, who is bound by an ancient curse that prevents him from finding true love. As the story unfolds, Damon discovers Lila, a spirited mortal woman who unknowingly holds the key to breaking his curse. Their relationship blossoms amidst the challenges posed by supernatural forces, rival vampire clans, and Lila's own struggles with her identity.

The plot thickens as Damon and Lila navigate their feelings for each other while facing various adversaries. Each character brings depth to the story, contributing to the overall tension that keeps readers engaged.

Their journey includes moments of passion, betrayal, and self-discovery that are essential to the thematic development of the novel.

Thematic Elements

"Prince of Twilight" is rich in themes that resonate with its audience. Below are some of the most prominent themes explored in the novel:

- **Love and Sacrifice:** The central theme of the novel revolves around love, particularly the sacrifices that individuals make for those they care about. Damon and Lila's love challenges societal norms and personal limitations.
- **Identity and Transformation:** As the characters evolve throughout the story, they grapple with their identities. Lila's transformation from an ordinary woman to a pivotal figure in the vampire realm highlights the theme of self-discovery.
- **Good vs. Evil:** The classic struggle between good and evil plays a vital role in the narrative, with Damon representing the complexity of morality in a world filled with dark forces.
- **Fate and Free Will:** The novel delves into the tension between destiny and personal choice, questioning whether characters can truly forge their paths or are bound by fate.

Character Analysis

Maggie Shayne's characters are multi-dimensional, each contributing to the richness of the story. Here are some of the key characters:

Damon

Damon is the quintessential vampire prince, burdened by the weight of his curse. His character development throughout the novel is profound, as he transitions from a tormented figure into someone capable of love and vulnerability. His struggles with his vampiric nature and longing for human connection make him a relatable and compelling protagonist.

Lila

Lila is a strong female lead who embodies resilience and curiosity. Initially unaware of the supernatural world, her journey of discovery leads her to confront her fears and embrace her destiny. Her character represents the theme of empowerment, as she defies expectations and fights for her love against all odds.

Supporting Characters

The supporting cast enhances the narrative, each adding layers to the plot. Key characters include:

- The Villain: A rival vampire who seeks to undermine Damon and Lila's love, representing the darker aspects of the vampire world.
- The Mentor: A wise figure who provides guidance to Damon, helping him navigate his curse and understand the nature of love.
- Friends and Allies: Characters who support the main duo, showcasing loyalty and friendship in the face of adversity.

Setting and World-Building

Maggie Shayne excels at creating immersive settings that transport readers to another world. The novel's settings include:

- The Enchanted Forest: A mystical place where the boundaries between the human and supernatural realms blur, serving as a backdrop for key events in the story.
- Damon's Castle: A hauntingly beautiful castle that reflects Damon's inner turmoil, symbolizing both his power and his isolation.
- Modern-Day Town: Lila's world, where the mundane meets the extraordinary, highlighting the contrast between her life and the vampire realm.

The world-building in "Prince of Twilight" is intricate, with Shayne weaving folklore, mythology, and original ideas to create a unique vampire universe. This level of detail enriches the reading experience, allowing readers to fully immerse themselves in the storyline.

Impact on the Paranormal Romance Genre

"Prince of Twilight" plays a significant role in the evolution of the paranormal romance genre. Shayne's ability to blend romance with elements of fantasy and horror offers readers a fresh perspective on

traditional vampire lore. The novel's success has contributed to the popularity of vampire romances, influencing other authors and shaping trends within the genre.

Some key impacts include:

1. **Character Development:** Shayne's focus on character depth and emotional growth has set a standard for future romance writers in the paranormal genre.
2. **Complex Antagonists:** The portrayal of villains as multi-dimensional characters adds depth to the conflict, encouraging authors to explore motivations beyond mere evil.
3. **Realism in Fantasy:** By grounding her characters' struggles in relatable emotions and experiences, Shayne bridges the gap between fantasy and reality, appealing to a broader audience.

Conclusion

In conclusion, "Prince of Twilight" by Maggie Shayne is a masterful blend of romance, fantasy, and supernatural elements, creating a captivating narrative that resonates with readers. Through its rich themes, well-developed characters, and immersive settings, the novel stands as a significant contribution to the paranormal romance genre. Shayne's storytelling not only entertains but also challenges readers to reflect on the complexities of love, identity, and destiny. For fans of romance and fantasy alike, "Prince of Twilight" remains a must-read that continues to inspire and enchant.

Frequently Asked Questions

What is the main premise of 'Prince of Twilight' by Maggie Shayne?

'Prince of Twilight' revolves around a vampire prince who is torn between his duty to his kind and his growing feelings for a mortal woman, exploring themes of love, sacrifice, and the eternal struggle between light and darkness.

Who are the main characters in 'Prince of Twilight'?

The main characters include the vampire prince, who must navigate his royal responsibilities and his emotions, and the mortal woman who captivates him, challenging his beliefs about love and connection.

What genre does 'Prince of Twilight' belong to?

'Prince of Twilight' is primarily a paranormal romance, infused with elements of fantasy and suspense, typical of Maggie Shayne's writing style.

Is 'Prince of Twilight' part of a series?

Yes, 'Prince of Twilight' is part of the 'Twilight' series by Maggie Shayne, which delves into the lives and loves of various supernatural beings.

What themes are explored in 'Prince of Twilight'?

Themes of forbidden love, the clash between duty and desire, the nature of immortality, and the battle between good and evil are central to 'Prince of Twilight.'

How does Maggie Shayne's writing style enhance 'Prince of Twilight'?

Maggie Shayne's writing is characterized by rich descriptions, emotional depth, and strong character development, which enhance the romantic and suspenseful elements of 'Prince of Twilight.'

What is the target audience for 'Prince of Twilight'?

'Prince of Twilight' primarily targets adult readers who enjoy paranormal romance, particularly fans of vampire lore and stories with strong romantic plots.

Has 'Prince of Twilight' received any notable reviews or recognition?

'Prince of Twilight' has received positive reviews for its engaging storyline and well-developed characters, solidifying Maggie Shayne's reputation in the paranormal romance genre.

Find other PDF article:

<https://soc.up.edu.ph/30-read/files?trackid=F0h82-7305&title=how-to-make-an-ebook-in-indesign.pdf>

Prince Of Twilight Maggie Shayne

Prince 2016 4 21 ...

Apr 21, 2016 · Prince
Prince - A Purple Reign ()
Prince
...

Prince 100000 - 100

prince 1958 Funk Machine 1975 94 East Willie Just Another Sucker 1985 Minneapolis Genius 1995 Symbolic Beginning If You See Me 1976 ...

Prince -

[illegible]

Prince Prince ...

Prince Prince? -

Aug 25, 2021 · Prince Prince Prince 80top Prince Prince P- ...

Blue Prince

Blue Prince Daniel Mullins
MetaCritic 93 Steam 150

Prince ...

Mar 16, 2025 · Robyn eternal sunshine

prince -

prince precision 200-300 PL prince "power level" 640 ...

"prince" -

Otto Fürst von Bismarck—Prince of Bismarck “ князь prince prince Fürst ...

IGN Blue Prince 9 ... -

Blue Prince Metacritic M 92 93 2025 PC ...

Prince -

prince; MJ prince soul funk MJ usher ...

Prince 2016 4 21

Apr 21, 2016 · Prince Prince Prince - A Purple Reign ()_ Prince ...

Prince -

prince 1958 1965 Funk Machine 1975 94 East Willie Just ...

Prince -

Prince ...

Prince Prince? -

Aug 25, 2021 · Prince Prince Prince 80top Prince Prince ...

Blue Prince

Blue Prince Daniel Mullins
MetaCritic 93 ...

Discover the enchanting world of 'Prince of Twilight' by Maggie Shayne. Dive into a tale of romance and mystery. Learn more about the captivating story today!

[Back to Home](#)