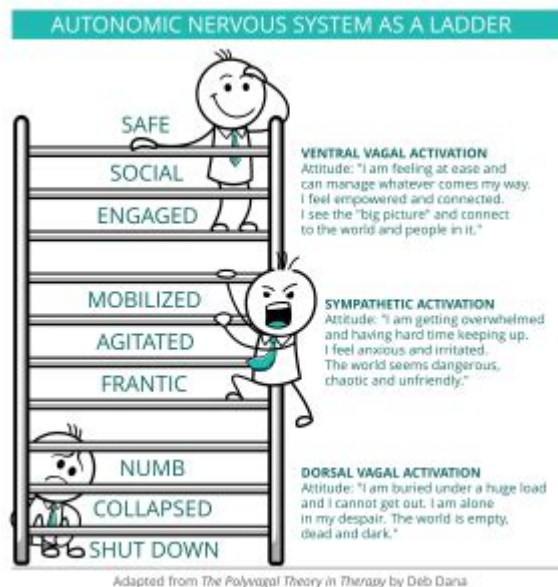


# Polyvagal Theory In Therapy Deb Dana



Polyvagal theory in therapy Deb Dana offers a groundbreaking framework for understanding how our nervous system influences our emotional and psychological well-being. Developed by Dr. Stephen Porges, polyvagal theory emphasizes the role of the vagus nerve in the regulation of our emotional states, social behaviors, and physiological responses. Deb Dana, a prominent clinician and author, has effectively translated this complex theory into practical therapeutic applications, making it accessible for both therapists and clients. In this article, we will explore the foundational concepts of polyvagal theory, how Deb Dana incorporates these ideas into therapy, and the profound impact this approach can have on mental health treatment.

## Understanding Polyvagal Theory

Polyvagal theory posits that our autonomic nervous system (ANS) is intricately connected to our emotional and social experiences. Unlike traditional views that categorize the ANS into sympathetic and parasympathetic divisions, polyvagal theory introduces a more nuanced understanding with three distinct pathways:

# The Three Branches of the Autonomic Nervous System

1. Ventral Vagal Complex (VVC): This branch is associated with feelings of safety, social connection, and calmness. It enables us to engage socially and promotes feelings of trust and safety.
2. Sympathetic Nervous System (SNS): This pathway is responsible for our fight-or-flight responses. It activates during perceived threats, leading to increased heart rate, heightened alertness, and stress responses.
3. Dorsal Vagal Complex (DVC): This branch governs immobilization responses, such as freezing or dissociation. It can lead to feelings of helplessness and shutdown in response to overwhelming stress.

Understanding these three branches allows therapists to help clients identify their emotional and physiological states, paving the way for effective interventions.

## Deb Dana's Contribution to Polyvagal Theory in Therapy

Deb Dana has been instrumental in bringing polyvagal theory into the therapeutic world. She has developed practical strategies that therapists can use to help clients regulate their nervous systems and foster emotional resilience. Her work emphasizes the importance of creating a safe therapeutic environment, which is essential for effective healing.

## Key Concepts in Deb Dana's Approach

1. The Importance of Safety: Dana highlights that the first step in any therapeutic process is to establish a sense of safety. Without safety, clients may remain in survival mode, making it difficult for them to engage in the therapeutic process.

2. **Neuroception:** This term refers to the subconscious process by which our nervous system evaluates safety and danger in our environment. Therapists trained in polyvagal theory can help clients increase their awareness of their neuroceptive responses, enabling them to better understand their reactions to stressors.

3. **The Role of Connection:** Dana emphasizes that social connections are vital for emotional regulation. Therapists can facilitate this by creating a supportive and empathetic therapeutic alliance, which allows clients to feel seen and heard.

4. **Somatic Interventions:** Dana integrates bodily awareness and somatic practices into therapy. Techniques such as breathwork, mindfulness, and gentle movement can help clients reconnect with their bodies and regulate their nervous systems.

## **Practical Applications of Polyvagal Theory in Therapy**

Deb Dana's approach to polyvagal theory translates into various therapeutic techniques that can be used to support clients. Here are some of the most effective methods:

### **1. Creating a Safe Therapeutic Environment**

- **Warm Greetings:** Start sessions with a warm and welcoming demeanor to establish a sense of safety.
- **Comfortable Space:** Ensure the therapy room is inviting and comfortable, free from distractions or discomfort.
- **Clear Boundaries:** Clearly communicate the structure and expectations of the therapy process to enhance feelings of safety.

## **2. Enhancing Clients' Awareness of Their Nervous System States**

- Nervous System Check-ins: Encourage clients to identify their current nervous system state (e.g., calm, stressed, shut down) at the beginning of each session.
- Journaling: Suggest that clients keep a journal to note their emotional and physiological responses throughout the week.

## **3. Incorporating Somatic Practices**

- Breathwork: Teach clients various breathing techniques to help them regulate their physiological responses.
- Mindfulness Practices: Introduce mindfulness exercises that help clients stay present and connected to their bodies.
- Movement: Encourage gentle movement or stretching to help clients reconnect with their physical sensations.

## **4. Building Resilience Through Connection**

- Social Engagement: Foster discussions about clients' social connections and relationships, emphasizing the importance of supportive networks.
- Therapeutic Alliance: Use your therapeutic relationship as a model for healthy connections, demonstrating empathy and understanding.

# **The Impact of Polyvagal Theory in Therapy**

The integration of polyvagal theory into therapeutic practices has profound implications for mental health treatment. Here are some of the key benefits:

## **1. Improved Emotional Regulation**

By helping clients understand and regulate their nervous system states, therapists can empower them to manage their emotional responses more effectively. This leads to reduced anxiety, depression, and feelings of overwhelm.

## **2. Enhanced Sense of Safety**

Establishing a safe therapeutic environment allows clients to explore their emotions without fear of judgment. This sense of safety can extend beyond therapy sessions, fostering healthier relationships in clients' personal lives.

## **3. Greater Awareness of Body-Mind Connection**

The emphasis on somatic practices helps clients cultivate a deeper awareness of their body-mind connection. This awareness is crucial for healing trauma and fostering resilience.

## **4. Stronger Therapeutic Alliance**

As therapists embody the principles of polyvagal theory, they can create stronger therapeutic alliances

with their clients. This connection is essential for meaningful and lasting change.

## **Conclusion**

**Polyvagal theory in therapy Deb Dana** represents a significant shift in how we understand and approach mental health treatment. By focusing on the nervous system's role in emotional regulation and social connection, therapists can create a more holistic and effective therapeutic experience. Deb Dana's work has made polyvagal theory accessible, providing practical tools and strategies that empower both therapists and clients. As awareness of this approach grows, it has the potential to transform the landscape of therapy, making it a beacon of hope for those seeking emotional healing and resilience.

## **Frequently Asked Questions**

### **What is Polyvagal Theory and how does Deb Dana incorporate it into therapy?**

Polyvagal Theory, developed by Stephen Porges, explains how our autonomic nervous system influences our emotional regulation, social connection, and fear responses. Deb Dana applies this theory in therapy by helping clients understand their physiological states and develop strategies to regulate their nervous systems, enhancing their ability to connect with others and manage stress.

### **How can Polyvagal Theory enhance therapeutic practices according to Deb Dana?**

Deb Dana emphasizes that integrating Polyvagal Theory into therapy can enhance practices by providing a framework for understanding clients' behaviors through their nervous system states. It allows therapists to create a safe environment, foster connection, and support clients in navigating their emotional experiences more effectively.

## **What techniques does Deb Dana suggest for clients to regulate their nervous system based on Polyvagal Theory?**

Deb Dana suggests several techniques for nervous system regulation, including mindfulness practices, breathing exercises, grounding techniques, and creating safe social connections. These strategies help clients move towards a state of safety and connection, which is essential for healing and emotional well-being.

## **What role does safety play in the application of Polyvagal Theory in therapy as described by Deb Dana?**

Safety is a cornerstone of Deb Dana's application of Polyvagal Theory in therapy. She asserts that creating a sense of safety in the therapeutic environment allows clients to access their higher brain functions, engage in meaningful connections, and explore their emotions without the threat response interfering with the process.

## **How does Deb Dana's work with Polyvagal Theory contribute to trauma-informed care?**

Deb Dana's work with Polyvagal Theory significantly contributes to trauma-informed care by providing insights into how trauma affects the nervous system. By understanding the physiological responses to trauma, therapists can tailor their approaches to be more sensitive and responsive to clients' needs, fostering healing and resilience.

Find other PDF article:

<https://soc.up.edu.ph/45-file/pdf?trackid=YLP93-2432&title=oriental-rug-identification-guide.pdf>

## **Polyvagal Theory In Therapy Deb Dana**

[Metal Slug: Awakening](#) | [Metal Slug Wiki](#) | [Fandom](#)

Metal Slug: Awakening (formerly known provisionally as Metal Slug Code: J) is a run-and-gun title for iOS and Android published by Tencent Games and developed by its subsidiary TiMi ...

## **Metal Slug: Awakening Character Tier List for July 2024**

Jul 17, 2024 · This Character Tier List for Metal Slug: Awakening helps players identify the top characters to use and upgrade, enhancing their gaming experience. True to its origins, Metal ...

## **Best Characters in Metal Slug: Awakening - Meta Tier List**

Jul 25, 2024 · The very core of your teams in Metal Slug Awakening are the characters, right? Well, they do build teams and use weapons and accessories, which can make things very ...

## Metal Slug Awakening tier list and a reroll guide - Pocket Gamer

Jul 17, 2025 · Our Metal Slug Awakening tier list sorts characters by power, so you can play almost like it's on easy mode!

## Metal Slug Awakening Tier List: Best Heroes ( [monthyear])

Jul 18, 2024 · Characters are the souls of online games, facilitating them to attract traffic for immense fame. Besides, look and read below religiously for the updated metal slug awakening ...

## **Metal Slug: Awakening/Characters - NamuWiki**

Jul 17, 2025 · This is the character who appears in the ending of Metal Slug 1. In the setting of Awakening, her boyfriend Miller was forcibly conscripted into the Modern Army 3 years ago ...

## **Metal Slug Awakening - SNK Wiki**

Metal Slug Awakening marks the second time characters from Honor of Kings collabs with an SNK IP after Gongsun Li 's appearance in Samurai Shodown (2019). This is the second run ...

## Metal Slug Awakening All Characters - contesting.com

Oct 9, 2023 · Metal Slug Awakening All Characters ruby campbell (mtammy779) on October 9, 2023  
Add a comment about this article! Metal Slug Awakening is a popular mobile game with a ...

## **Tier List of Metal Slug Awakening Characters and Weapon**

Aug 25, 2023 · The worldwide release of Metal Slug Awakening has brought about a series of alterations encompassing its gameplay mechanics, visual elements, and artistic approach. ...

## Metal Slug: Awakening Tier List (July 2024) - Twinfinite

Jul 29, 2024 · Metal Slug: Awakening Characters Tier List Image Source: SNK & TierMaker via Twinfinite Further below are notes on each character's ranking.

## **Motel | Motel le Noroît | Gaspé**

Le motel le Noroît est un motel pittoresque situé au bord de la mer à l'Anse-au-Griffon. C'est l'endroit idéal pour tomber en amour avec la faune et la flore de la Gaspésie.

## Chambres | Motel le Noroît

Le motel le noroît est un hébergement sur le bord de la mer dans le chaleureux village de l'Anse-au-Griffon.

## Motel le Noroît - Reviews & Photos - Tripadvisor

The motel is situated right along the edge of the water and there are chairs to sit in and watch the seals and birds along the coast. A great view while you enjoy breakfast!

## *Motel le Noroît in Griffin Cove, Canada - Lets Book Hotel*

Featuring a view of the Gulf of Saint-Lawrence, this motel in the village of l'Anse-au-Griffon is located at the tip of the Gaspé coast. Free in-room Wi-Fi is included.



## **Tourisme Gaspésie -- Motel le Noroît**

Included in this listing, description and type of services of Motel le Noroît, contact information, location on Google Maps, his phone numbers, email address, website and presence on social ...

### **Motel le Noroît - Guest Reservations**

How much does it cost per night to stay at Motel le Noroît? Prices vary based on dates and availability. Select the dates of your stay above to find the best price on all available rooms.

#### *Découvrir | Motel le Noroît*

Le Noroît est un motel pittoresque situé au bord de la mer à l'Anse-au-Griffon. C'est l'endroit idéal pour tomber en amour avec la faune et la flore de la Gaspésie.

### **Notre équipe | Motel le Noroît**

Expert de l'immobilier et de tout ce qui touche le commercial, il est directeur de comptes pour une institution financière. Excellent pour réparer tout ce qui brise, il est très polyvalent.

#### CONTACT - Motel le Noroît

Le motel le noroît est un hébergement sur le bord de la mer dans le chaleureux village de l'Anse-au-Griffon.

### **Hébergement - Motel Le Noroît [ Hôtel - Motel : Gaspésie Îles-de-la ...**

Le Motel Le Noroît est situé à la pointe de la Gaspésie au coeur du magnifique village de L'Anse-au-griffon. Il vous offre une vue grandiose sur la mer et les falaises mais aussi sur les ...

Explore how Polyvagal Theory in therapy by Deb Dana can transform your practice. Discover how to enhance client connections and emotional well-being. Learn more!

[Back to Home](#)